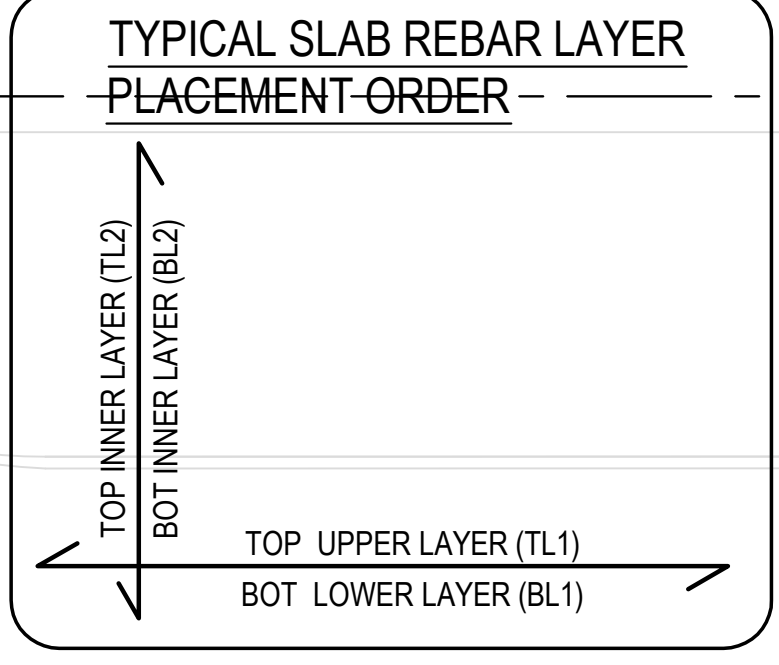


- PLAN NOTES AND LEGEND:**
- FOR GENERAL NOTES SEE SHEETS S-001 TO S-004.
  - FOR TYPICAL DETAILS SEE SHEETS S-011 TO S-042.
  - VERIFY ALL DIMENSIONS PRIOR TO START OF WORK. SEE ARCHITECTURAL DRAWINGS FOR REMAINDER OF DIMENSIONS NOT SHOWN ON THIS PLAN, INCLUDING COLUMNS ON SERPENTINE WALLS, TYP.
  - SEE ARCHITECTURAL DRAWINGS FOR CONCRETE SLAB ELEVATIONS, DEPRESSIONS, SLOPES, OPENINGS, CURBS, DRAINS, TRENCHES, SLAB EDGE LOCATIONS, ETC., AND FOR WALL OVERALL DIMENSIONS, LOCATIONS OF OPENINGS, ETC., NOT INDICATED ON STRUCTURAL DRAWINGS.
  - CONCRETE SLAB SHALL BE 13" THK, TYP. UNO. PROVIDE #5@12 T&B, EA WAY OVER ENTIRE SLAB.
  - BAR SHOWN ARE IN ADDITION TO #5@12" MESH.
  - SLAB REINFORCEMENT PLACEMENT ORDER:



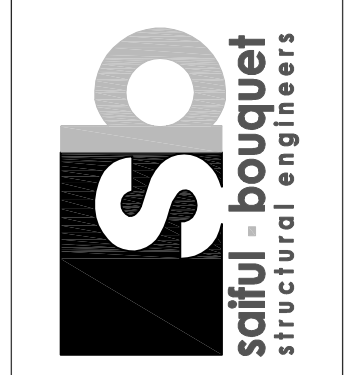
- (SRT10.A) INDICATES STUDDRAIL SHEAR REINFORCING FOR LAYOUT AND TYPE, SEE S-017.
- FOR BALANCE OF NOTES AND FRAMING INFORMATION, SEE SHEET S-207.

REVISIONS:  
 05/07/2015 Addendum 02  
 09/04/2015 Addendum 03  
 10/20/2015 Addendum 04  
 05/27/2016 Addendum 05

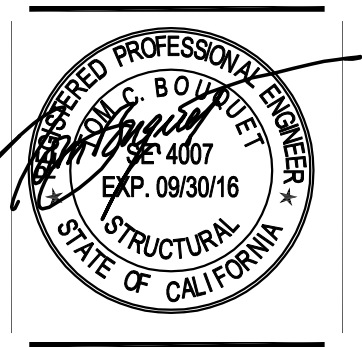


**howard laks architects**  
 voice + 310-353-4465  
 fax + 310-353-7200  
 1545 Wilshire Street  
 Santa Monica, CA 90401

**CONSULTANTS**  
 158 N. Lake Avenue  
 Suite 100, California 91101  
 Telephone: 909.396.3116  
 Cellphone: 909.396.3114  
 Fax: 909.396.3115  
 SA Job No: 12042



**710 WILSHIRE BOULEVARD**  
 MIXED-USE HOTEL PROJECT  
 SANTA MONICA - CALIFORNIA 90401  
 GROUND FLOOR REINFORCING PLAN



DRAWN: -  
 CHECKED: -  
 APPROVED: -  
 SCALE: 1/8" = 1'-0"  
 SHEET: **S-207R**  
 DATE: June 25, 2013  
 PROJECT NUMBER: HLA 0000000-00000