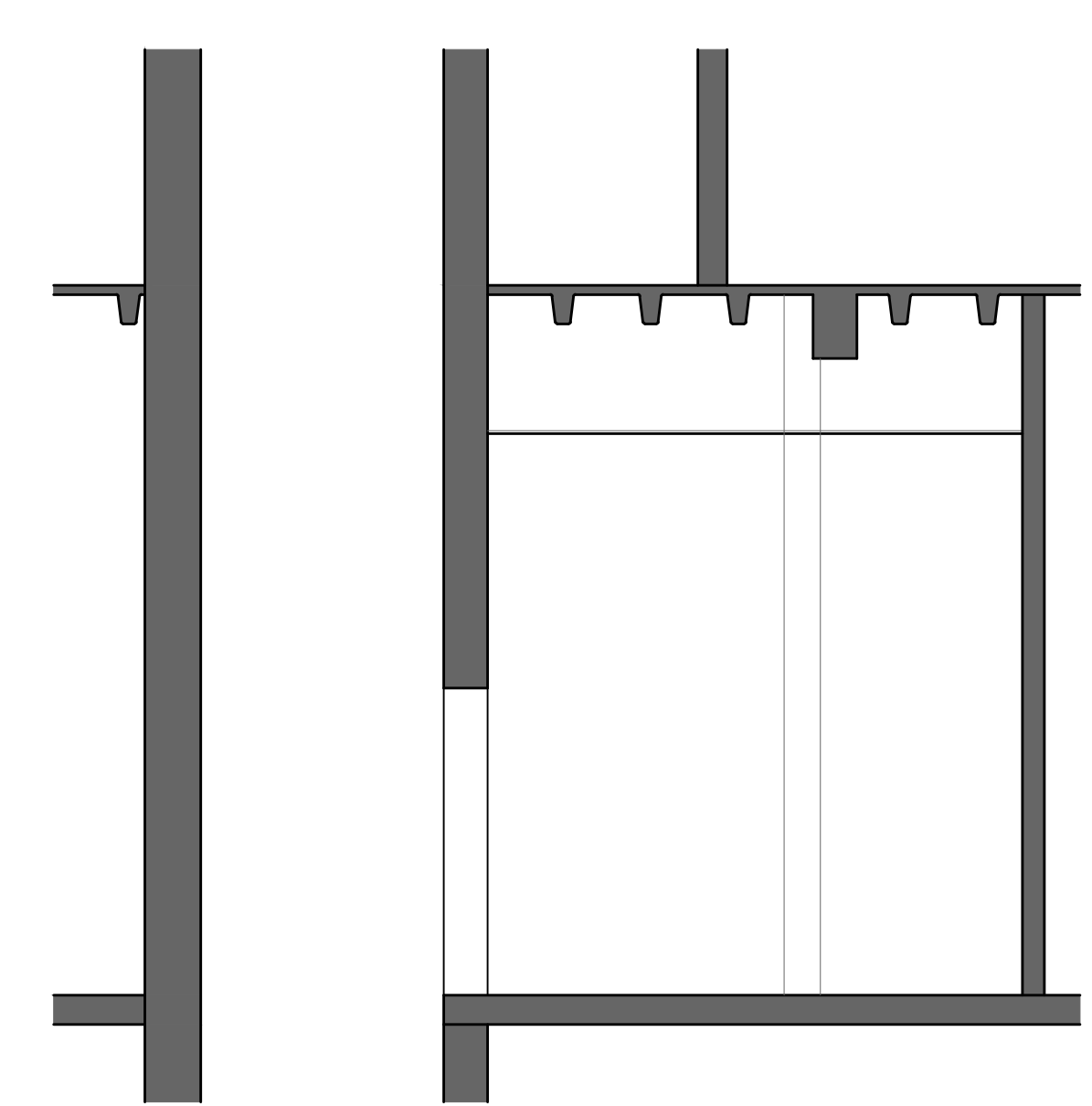
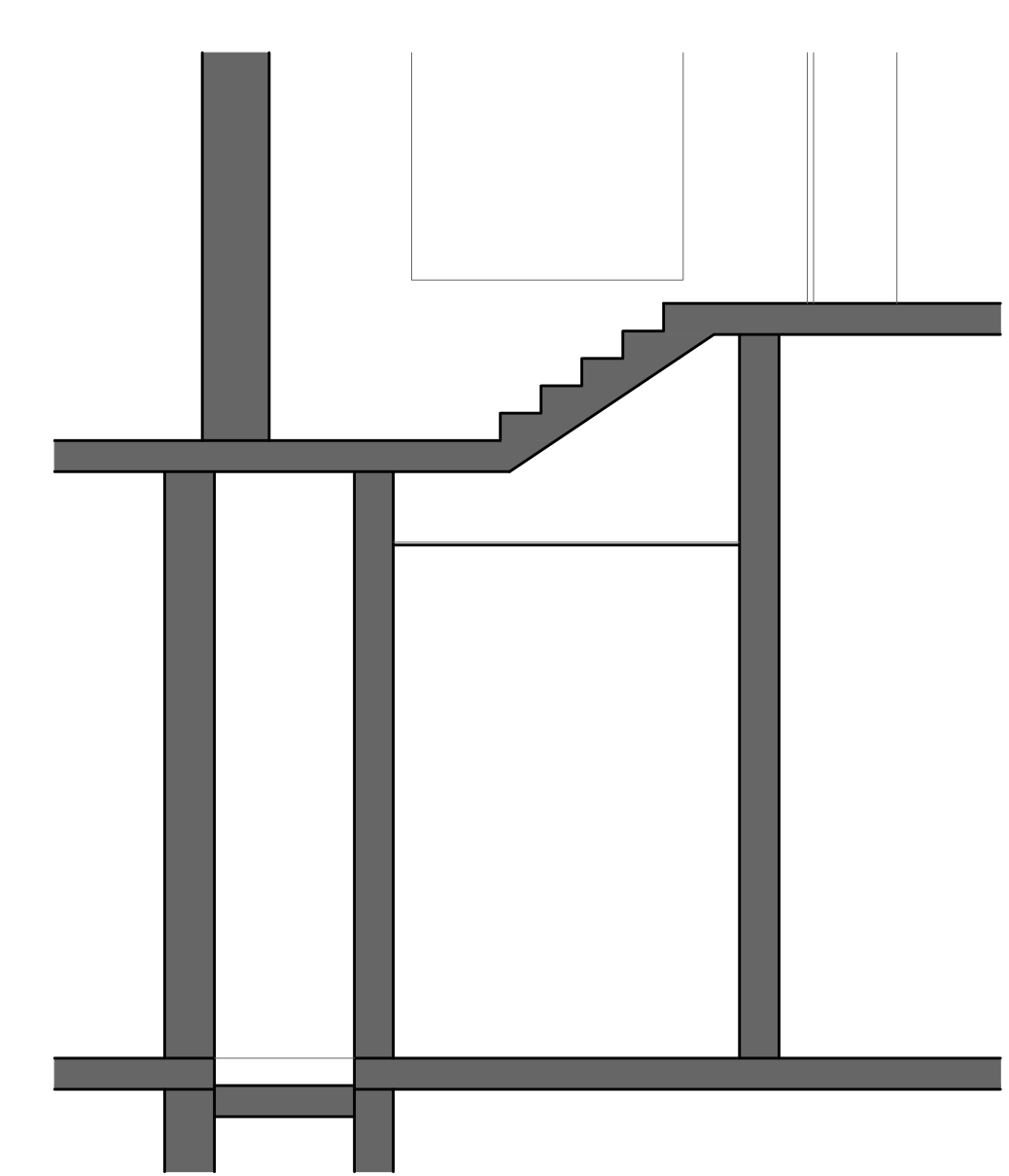


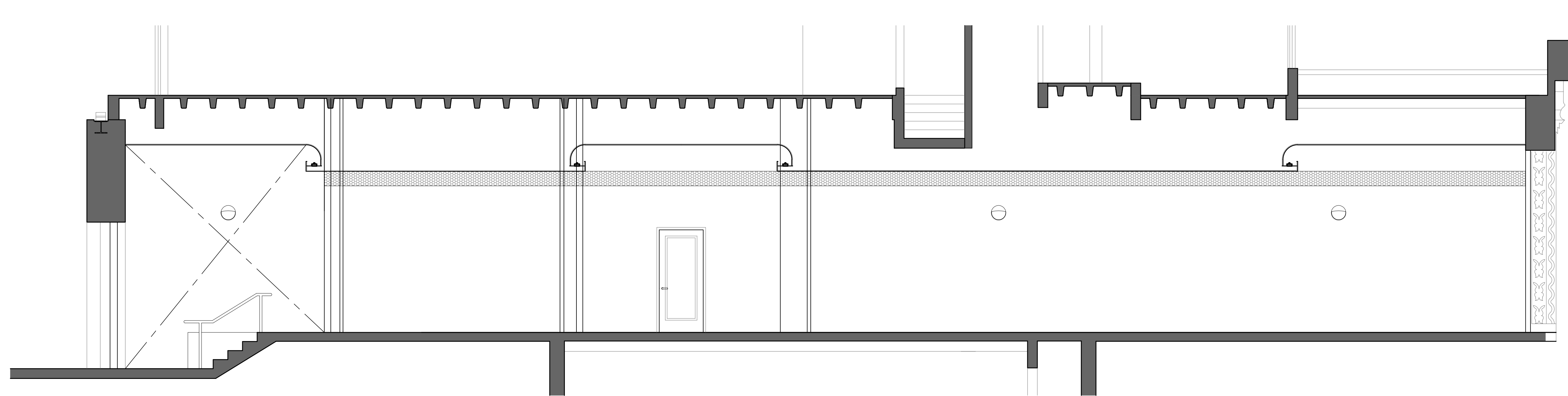
INTERIOR ELEVATION - LANDMARK ELEVATOR LOBBIES FLOORS 2-6
1/4" = 1'-0" 3



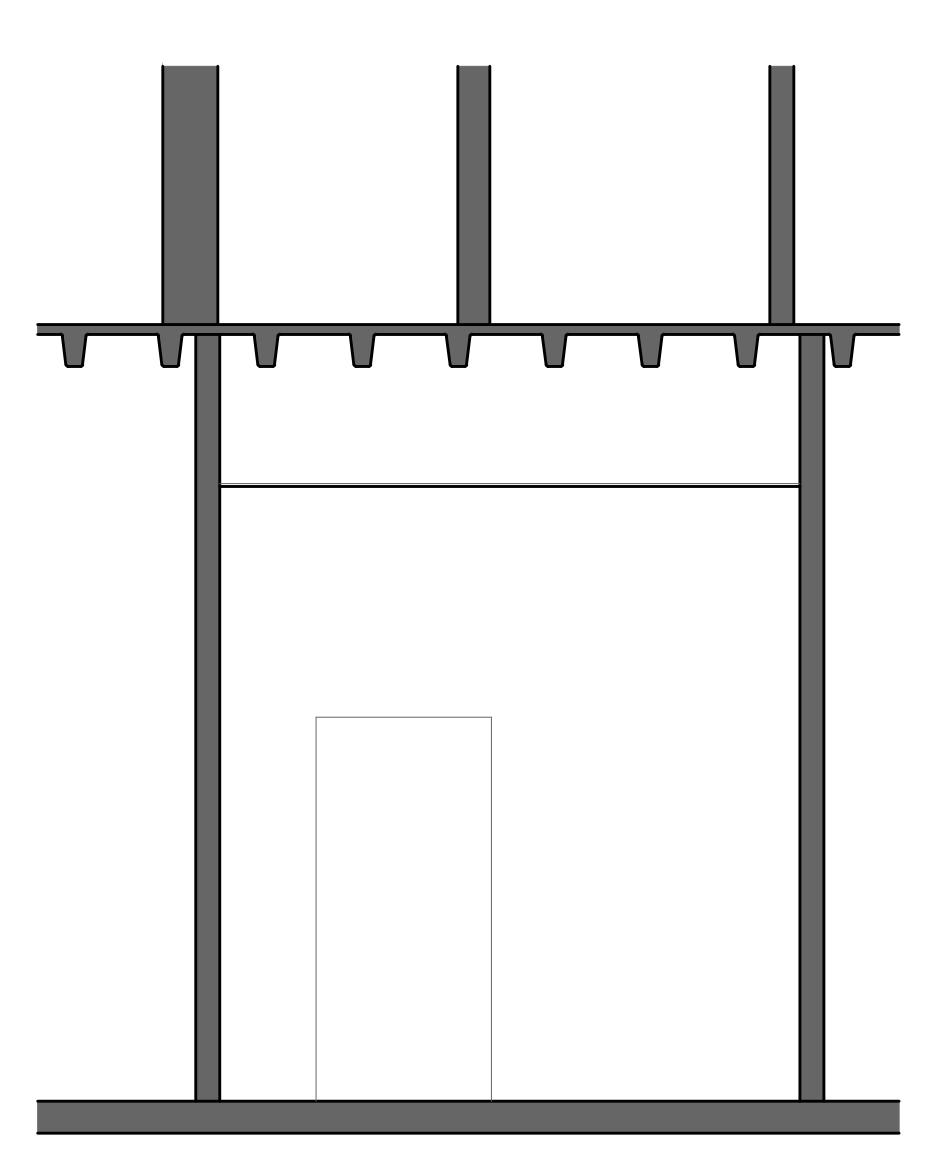
INTERIOR SECTION - LANDMARK LOBBY
1/4" = 1'-0" 9



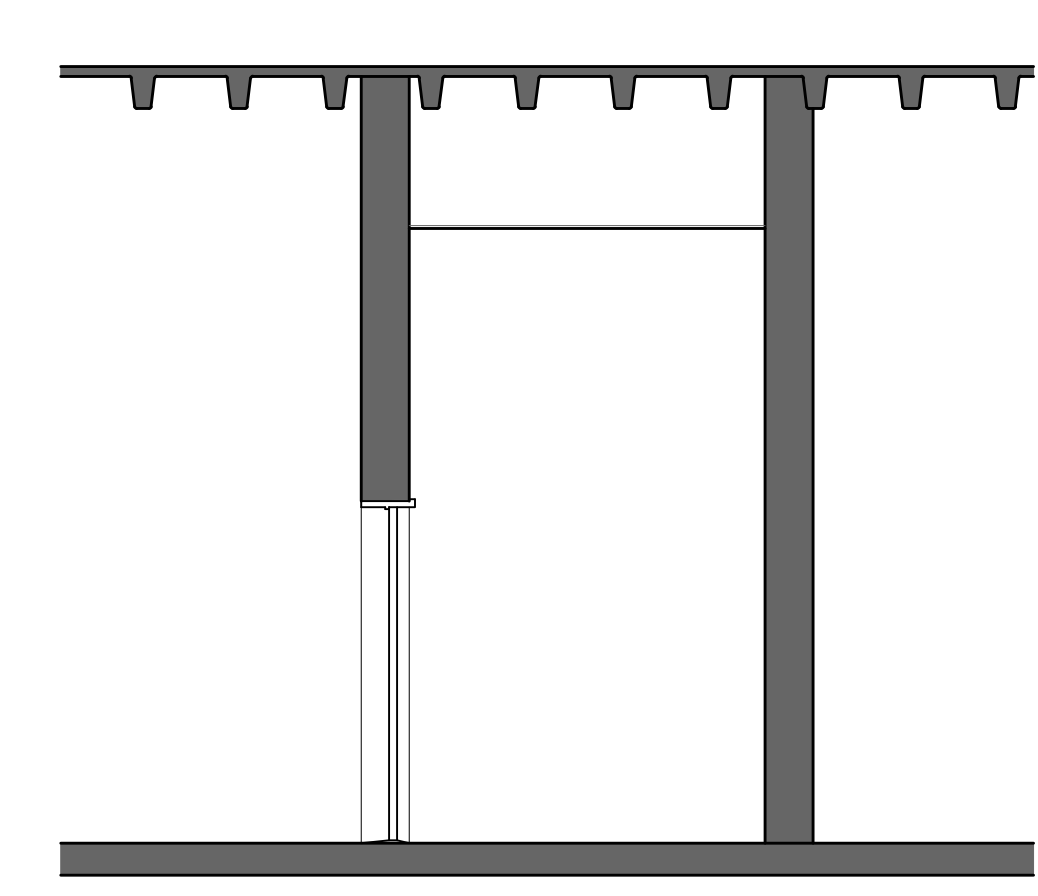
INTERIOR SECTION - LANDMARK LOBBY
1/4" = 1'-0" 6



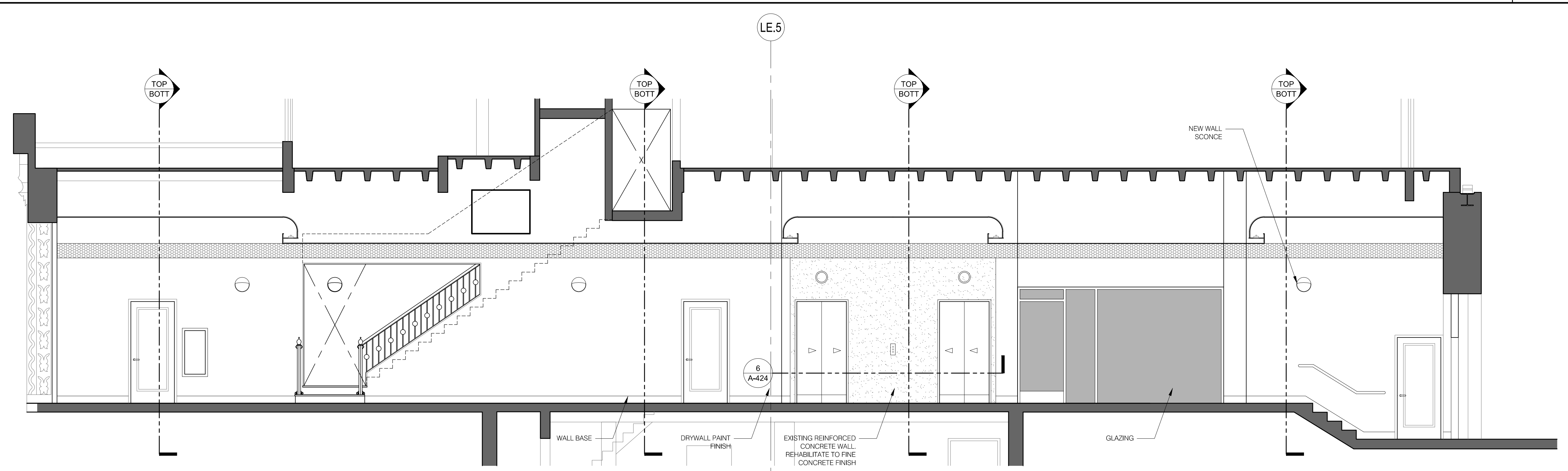
INTERIOR ELEVATION - LANDMARK LOBBY
1/4" = 1'-0" 2



INTERIOR SECTION - LANDMARK LOBBY
1/4" = 1'-0" 8



INTERIOR SECTION - LANDMARK LOBBY
1/4" = 1'-0" 5



INTERIOR ELEVATION - LANDMARK LOBBY
1/4" = 1'-0" 1

REVISIONS NO. DATE BY 05/07/2013 06/04/2013 10/29/2013 05/27/2014	DESCRIPTION Addendum 02 Addendum 03 Addendum 04 Addendum 05
howard laks architects 1545 Lowell Street Santa Monica, CA 90401 voice : 310-393-4465 fax : 310-393-2230	
CONSULTANTS	
710 WILSHIRE BOULEVARD MIXED-USE HOTEL PROJECT SANTA MONICA - CALIFORNIA 90401 INTERIOR DETAILS - LANDMARK LOBBY	
DRAWN: SC CHECKED: HLA APPROVED: - SCALE: AS NOTED SHEET:	A-460 DATE: June 25, 2013 PROJECT NUMBER: HLA 000000-0000