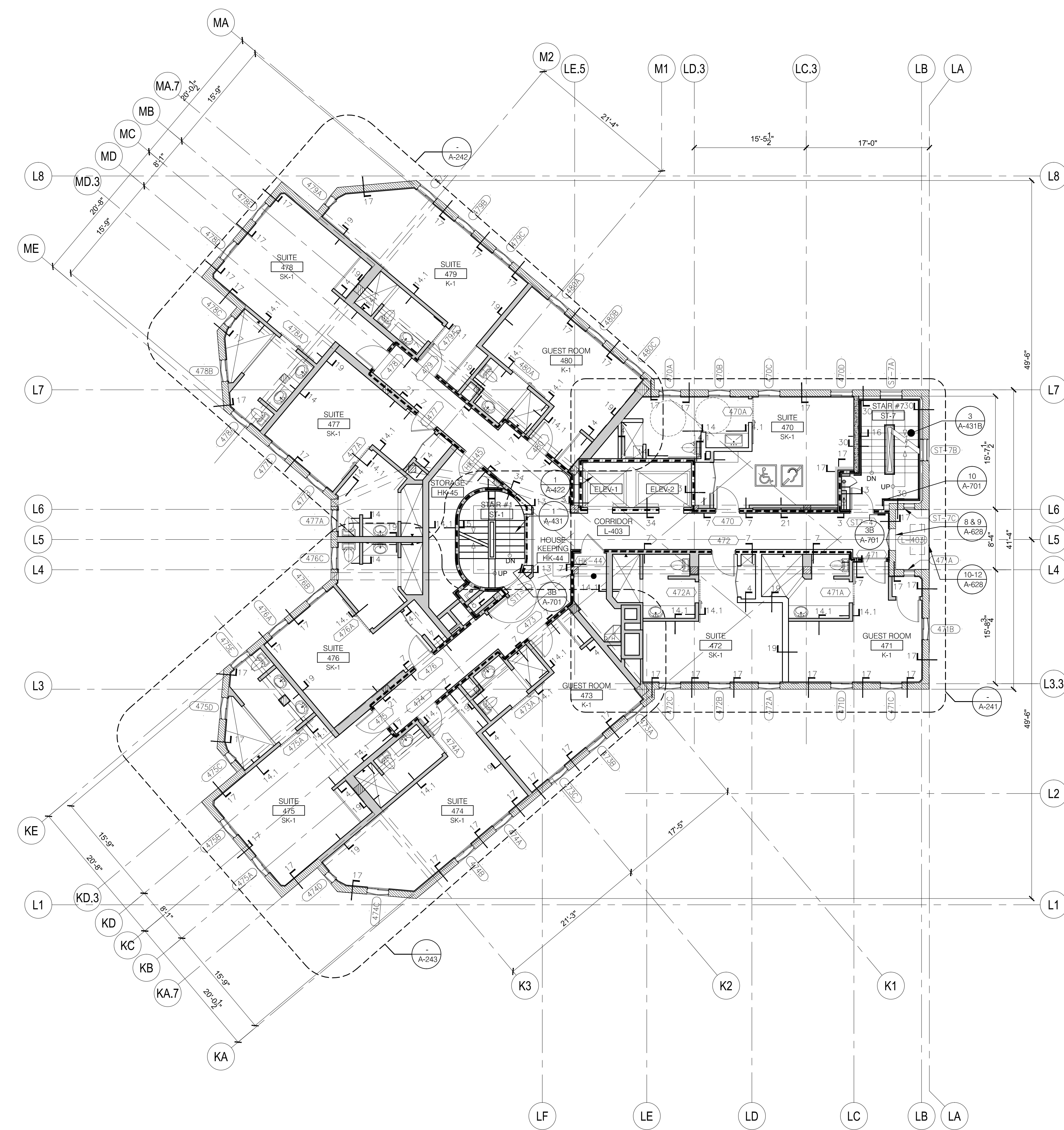


FIFTH FLOOR HISTORIC LANDMARK BUILDING

1/8" = 1'-0" 2



FOURTH FLOOR HISTORIC LANDMARK BUILDING

1/8" = 1'-0" 1

NOTE:  
ALL DIMENSIONS FOR THE EXISTING BUILDING  
MUST BE VERIFIED IN THE FIELD BEFORE  
CONSTRUCTION.  
WALL TYPE DESIGNATION:  
SEE SHEET A-601 TYP.

REVISIONS  
DATE  
BY  
DESCRIPTION



howard laks architects  
1545 Inglethorpe Street  
Santa Monica, CA 90401  
voice : 310-393-4455  
fax : 310-393-2230

CONSULTANTS

710 WILSHIRE BOULEVARD  
MIXED-USE HOTEL PROJECT  
SANTA MONICA - CALIFORNIA, 90401  
LANDMARK 4TH & 5TH FLOOR PLANS

DRAWN: AH/SC  
CHECKED: HLA  
APPROVED: -  
SCALE: 1/8" = 1'-0"  
SHEET: A-217  
DATE: June 25, 2013  
PROJECT NUMBER: HLA 000000-0000