

**INTERIOR ELEVATIONS: KEYNOTE LEGEND**

- 10R1 TOILET PARTITION - SEE SPECIFICATIONS
- 10R2 URINAL PARTITION - SEE SPECIFICATIONS
- 10R3 TOILET PAPER DISPENSER - SEE SPECIFICATIONS
- 10R4 TOILET TOWEL DISPENSER - SEE SPECIFICATIONS
- 10R8 WALL MOUNTED MIRROR - SEE SPECIFICATIONS
- 10R9 MIRROR MOUNTED ACCESS SPECIFICATIONS
- 10R10 HAND SOAP DISPENSER - SEE SPECIFICATIONS
- 10R13 HAND TOWEL DISPENSER / WASTE BIN: RECESS MOUNT - SEE SPECIFICATIONS
- 10R15 ACCESS GRAB BARS - SEE SPECIFICATIONS
- 11J9 VANITY CABINETS - SEE SPECIFICATIONS
- 11K2 PLASTIC LAMINATE COUNTERTOP - SEE SPECIFICATIONS
- 11K3 MONOLITHIC MOLDED PLASTIC COUNTERTOP - SEE SPECIFICATIONS
- 15F1 LAVATORY: COUNTER MOUNTED - SEE SPECIFICATIONS
- 15F5 WATER CLOSET - SEE SPECIFICATIONS

**NOTES**

- 1. SEE FLOOR PLANS, SHEETS A2.1 AND A6.3 FOR ADDITIONAL INFORMATION.
- 2. SEE MECHANICAL, ELECTRICAL & PLUMBING PLANS FOR ADDITIONAL INFORMATION.
- 3. SEE SPECIFICATIONS FOR BATHROOM ACCESSORY INFORMATION.
- 4. PROVIDE BACKING, AS REQ'D. FOR ALL DISABLED ACCESS GRAB BARS

**INTERIOR ELEVATIONS**

PROJECT: 9885  
 DRAWN: [ ] CHECKED: [ ]

ISSUE DATE DESCRIPTION  
 09.06.00 DESIGN DEVELOPMENT  
 10.17.00 PROGRESS SET  
 11.00.00 BUILDING DEPT. SUBMITTAL  
 01.02.01 PROGRESS SET  
 04.16.01 REVIEW SET  
 06.25.01 REVIEW SET  
 07.20.01 BID SET  
 10.03.01 MAX SET

**INTERIOR ELEVATIONS**

PROJECT: 9885  
 DRAWN: [ ] CHECKED: [ ]

ISSUE DATE DESCRIPTION  
 09.06.00 DESIGN DEVELOPMENT  
 10.17.00 PROGRESS SET  
 11.00.00 BUILDING DEPT. SUBMITTAL  
 01.02.01 PROGRESS SET  
 04.16.01 REVIEW SET  
 06.25.01 REVIEW SET  
 07.20.01 BID SET  
 10.03.01 MAX SET

**INTERIOR ELEVATIONS**

PROJECT: 9885  
 DRAWN: [ ] CHECKED: [ ]

ISSUE DATE DESCRIPTION  
 09.06.00 DESIGN DEVELOPMENT  
 10.17.00 PROGRESS SET  
 11.00.00 BUILDING DEPT. SUBMITTAL  
 01.02.01 PROGRESS SET  
 04.16.01 REVIEW SET  
 06.25.01 REVIEW SET  
 07.20.01 BID SET  
 10.03.01 MAX SET

**INTERIOR ELEVATIONS**

PROJECT: 9885  
 DRAWN: [ ] CHECKED: [ ]

ISSUE DATE DESCRIPTION  
 09.06.00 DESIGN DEVELOPMENT  
 10.17.00 PROGRESS SET  
 11.00.00 BUILDING DEPT. SUBMITTAL  
 01.02.01 PROGRESS SET  
 04.16.01 REVIEW SET  
 06.25.01 REVIEW SET  
 07.20.01 BID SET  
 10.03.01 MAX SET

**INTERIOR ELEVATIONS**

PROJECT: 9885  
 DRAWN: [ ] CHECKED: [ ]

ISSUE DATE DESCRIPTION  
 09.06.00 DESIGN DEVELOPMENT  
 10.17.00 PROGRESS SET  
 11.00.00 BUILDING DEPT. SUBMITTAL  
 01.02.01 PROGRESS SET  
 04.16.01 REVIEW SET  
 06.25.01 REVIEW SET  
 07.20.01 BID SET  
 10.03.01 MAX SET

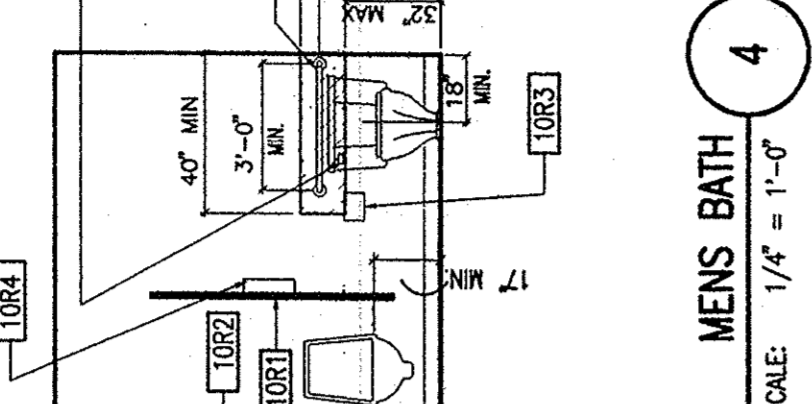
**INTERIOR ELEVATIONS**

PROJECT: 9885  
 DRAWN: [ ] CHECKED: [ ]

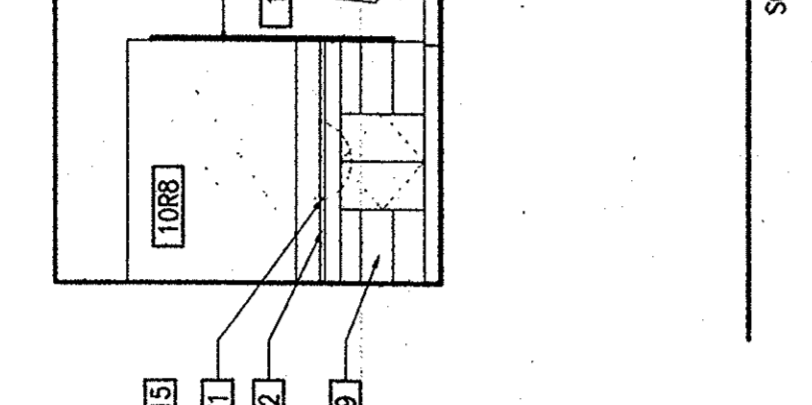
ISSUE DATE DESCRIPTION  
 09.06.00 DESIGN DEVELOPMENT  
 10.17.00 PROGRESS SET  
 11.00.00 BUILDING DEPT. SUBMITTAL  
 01.02.01 PROGRESS SET  
 04.16.01 REVIEW SET  
 06.25.01 REVIEW SET  
 07.20.01 BID SET  
 10.03.01 MAX SET

**INTERIOR ELEVATIONS**

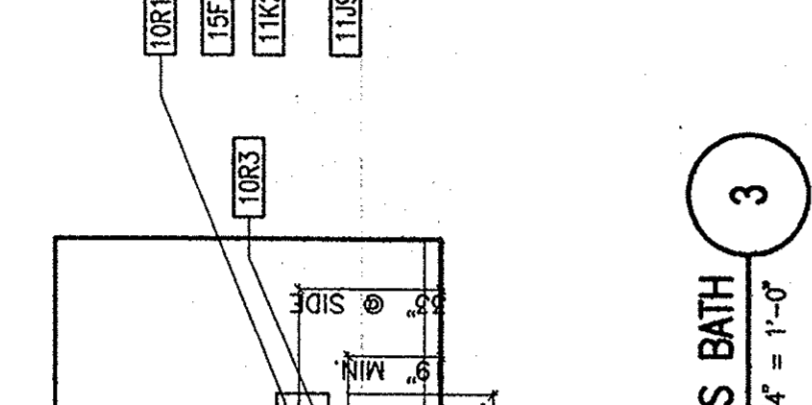
PROJECT: 9885  
 DRAWN: [ ] CHECKED: [ ]



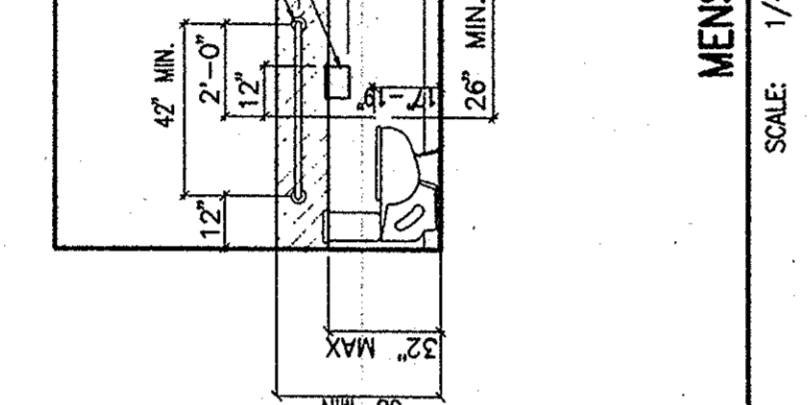
**MENS BATH 1**  
 SCALE: 1/4" = 1'-0"



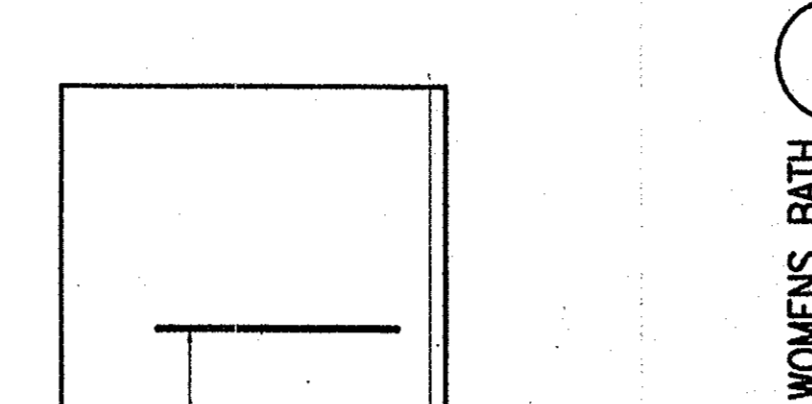
**MENS BATH 2**  
 SCALE: 1/4" = 1'-0"



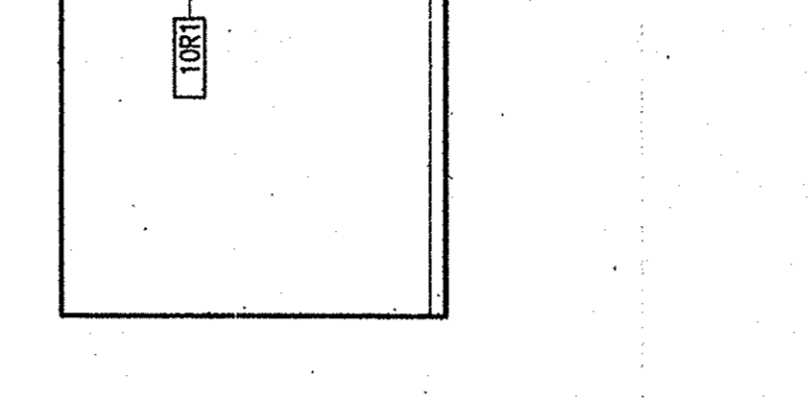
**MENS BATH 3**  
 SCALE: 1/4" = 1'-0"



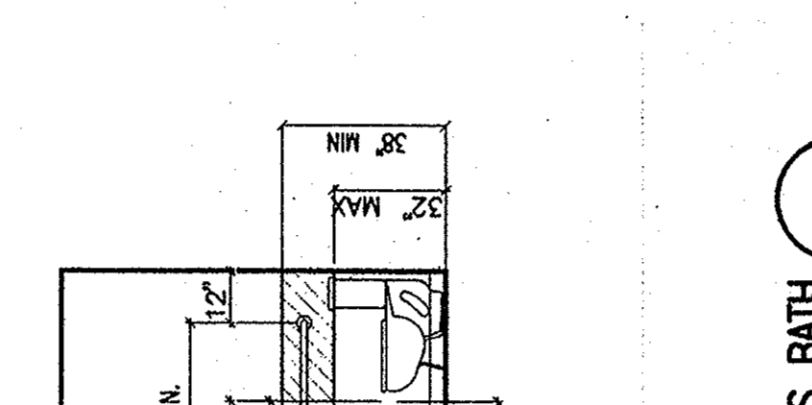
**MENS BATH 4**  
 SCALE: 1/4" = 1'-0"



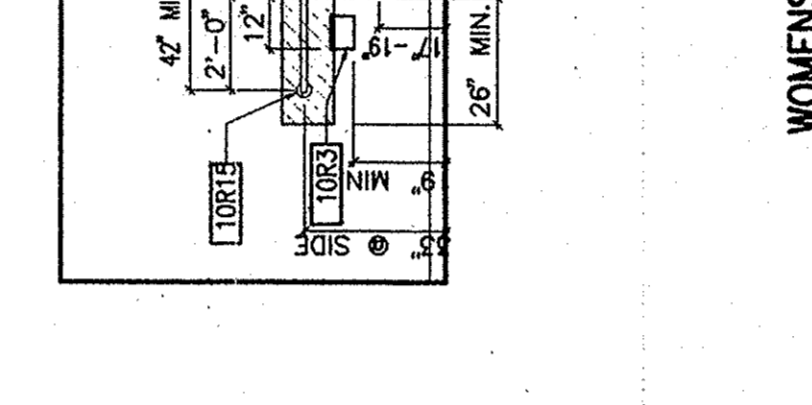
**WOMENS BATH 5**  
 SCALE: 1/4" = 1'-0"



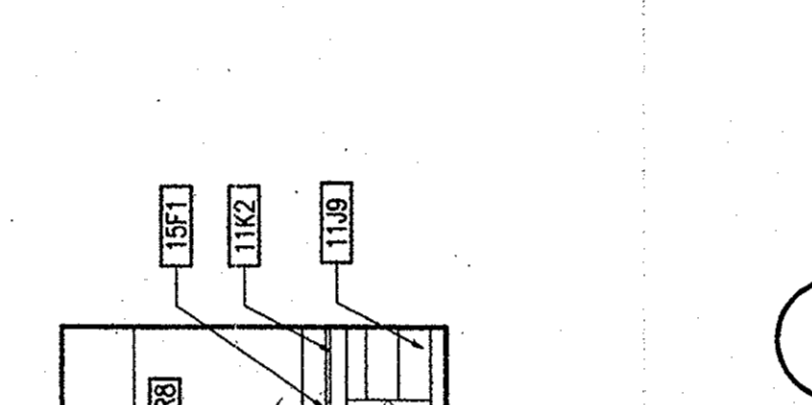
**WOMENS BATH 6**  
 SCALE: 1/4" = 1'-0"



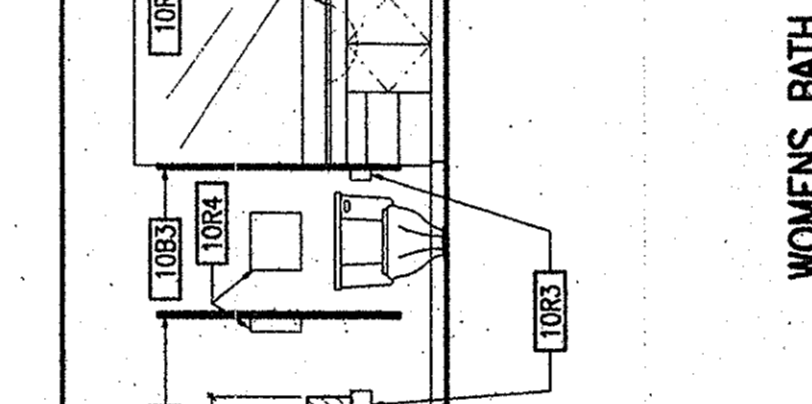
**WOMENS BATH 7**  
 SCALE: 1/4" = 1'-0"



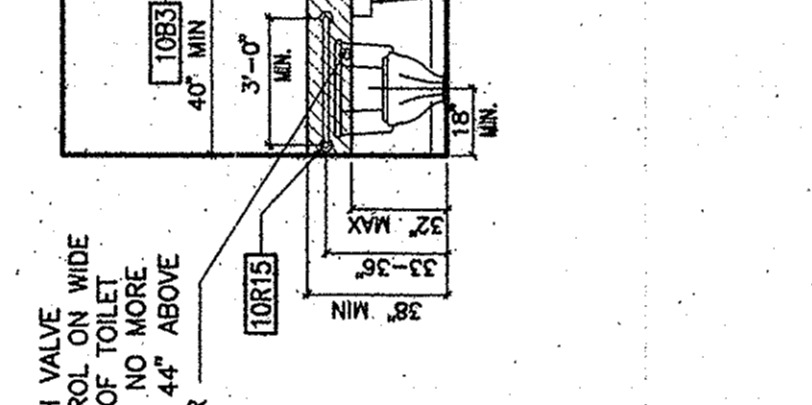
**WOMENS BATH 8**  
 SCALE: 1/4" = 1'-0"



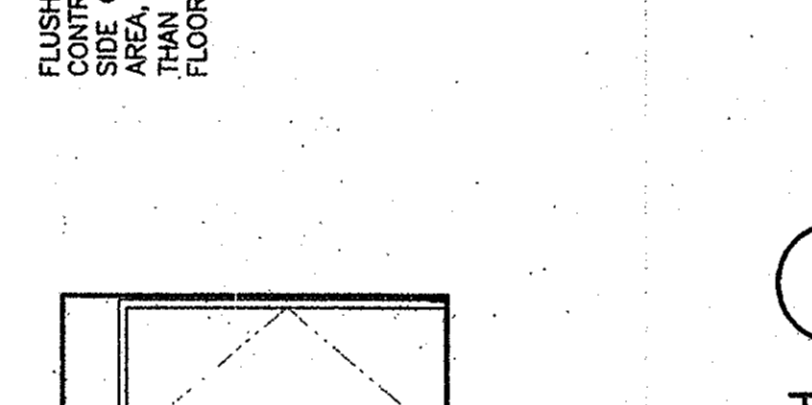
**WOMENS BATH 9**  
 SCALE: 1/4" = 1'-0"



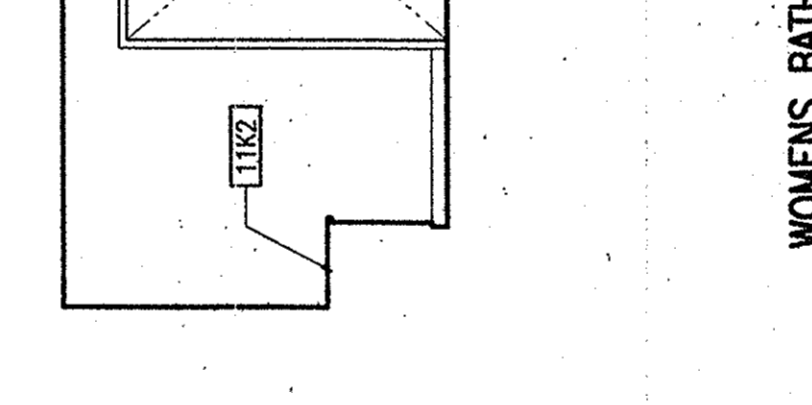
**WOMENS BATH 10**  
 SCALE: 1/4" = 1'-0"



**WOMENS BATH 11**  
 SCALE: 1/4" = 1'-0"



**WOMENS BATH 12**  
 SCALE: 1/4" = 1'-0"



**WOMENS BATH 13**  
 SCALE: 1/4" = 1'-0"



**WOMENS BATH 14**  
 SCALE: 1/4" = 1'-0"



**WOMENS BATH 15**  
 SCALE: 1/4" = 1'-0"



**WOMENS BATH 16**  
 SCALE: 1/4" = 1'-0"



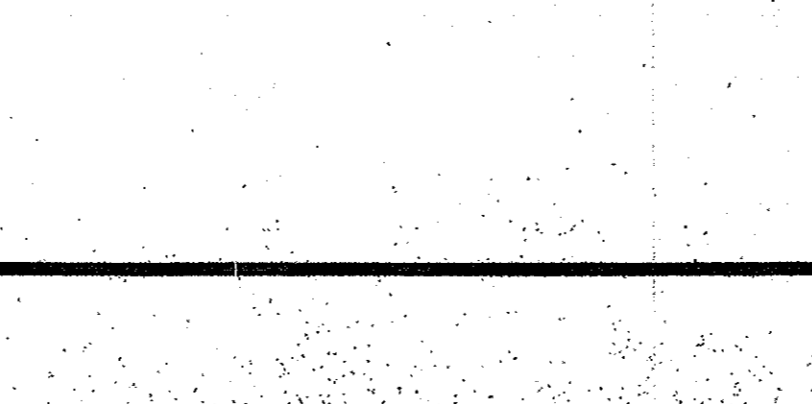
**WOMENS BATH 17**  
 SCALE: 1/4" = 1'-0"



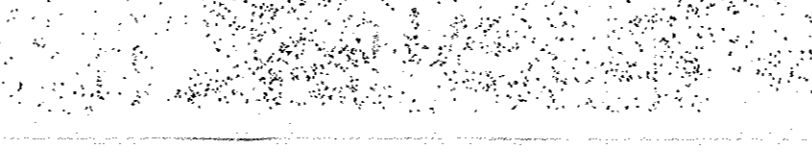
**WOMENS BATH 18**  
 SCALE: 1/4" = 1'-0"



**WOMENS BATH 19**  
 SCALE: 1/4" = 1'-0"



**WOMENS BATH 20**  
 SCALE: 1/4" = 1'-0"



**WOMENS BATH 21**  
 SCALE: 1/4" = 1'-0"