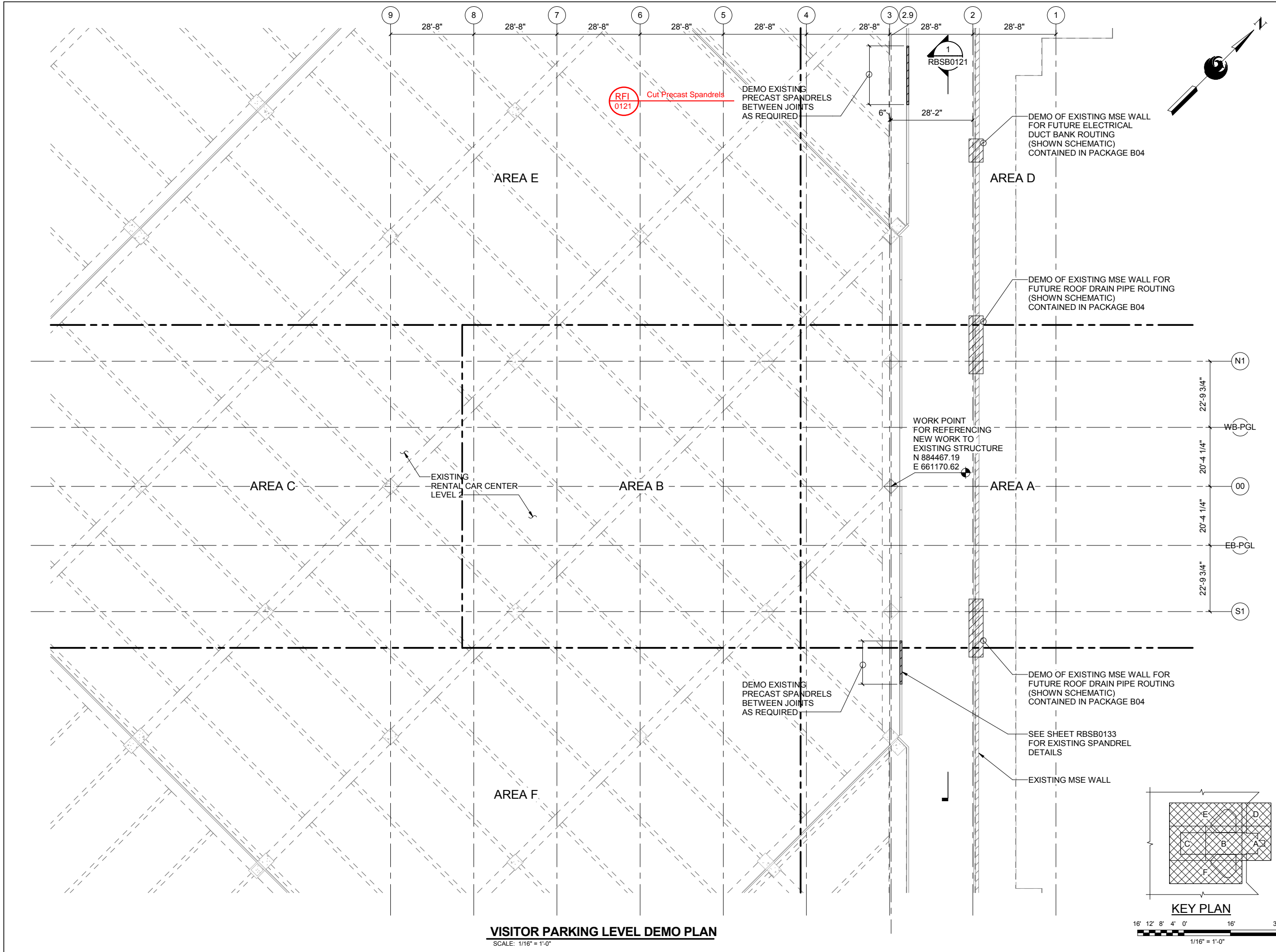




# INDEX





Design Sub-Consultant

Design Consultant



**Gannett Fleming**

PER CITY OF PHOENIX ORDINANCE G-4396, THESE PLANS ARE FOR OFFICIAL USE ONLY AND MAY NOT BE SHARED WITH OTHERS EXCEPT AS REQUIRED TO FULFILL THE OBLIGATION OF YOUR CONTRACT WITH THE CITY OF PHOENIX.

NO.	REVISIONS / SUBMISSIONS	DATE
	ISSUED FOR CONSTRUCTION	04/13/18
	SUBMITTED FOR REVIEW	02/02/18



CITY OF PHOENIX AVIATION DEPARTMENT

## PHX SKY TRAIN

### STAGE 2 DESIGN

### 500 S 24TH STREET

### PHOENIX, AZ 85034

Designed by: ACK	Checked by: SES	Date: 04/13/2018
Drawn by: MWK	Dwg scale: 1/16" = 1'-0"	CIP No.: AV10000011
KIVA No.: 07-5204		

STAGE 2 - B03 DESIGN SUBMISSION

**RCC STATION**

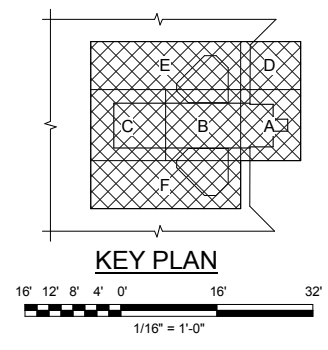
**STRUCTURAL**

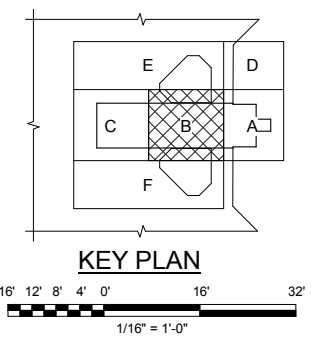
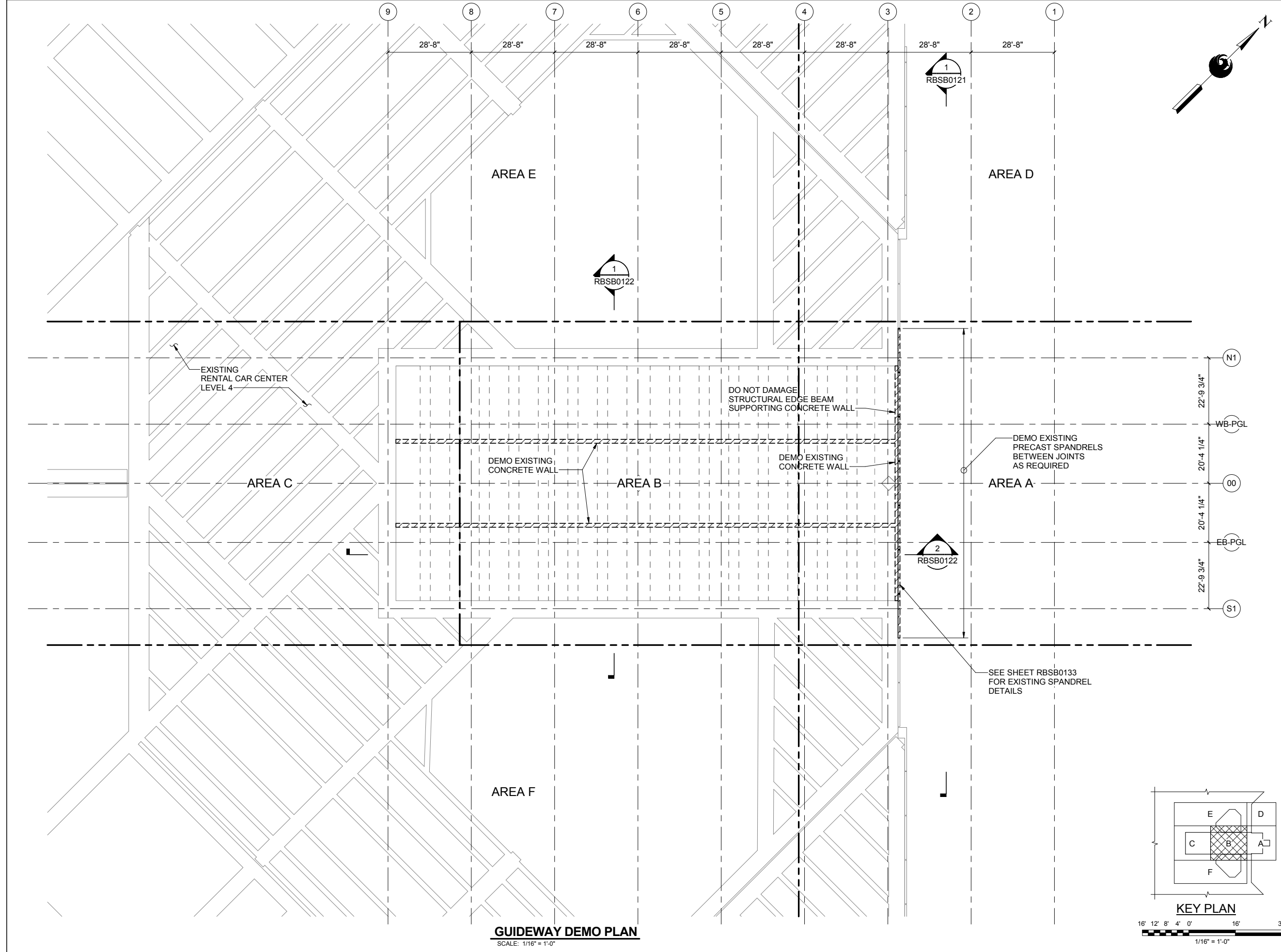
**VISITOR PARKING LEVEL DEMO PLAN**

Package: **B03 - RBSB0101** Sheet Reference No: V1 - 228 of 339

Project Number: 02421  
 4/11/2018 9:22:15 PM  
 Local File: AV10000011-S2-RCSBXX01\_LR17\_A380\_detached.rvt  
 Central File: BIM 360/62421 - Phoenix Sky Train Project - Stage 2/02/2421\_FR01\_S\_central\_LR17\_A380.rvt

**VISITOR PARKING LEVEL DEMO PLAN**  
SCALE: 1/16" = 1'-0"





Professional Engineer Seal: **PHOENIX** STATE OF ARIZONA  
 Design Sub-Consultant  
**Gannett Fleming**  
 Design Consultant

PER CITY OF PHOENIX ORDINANCE G-4396, THESE PLANS ARE FOR OFFICIAL USE ONLY AND MAY NOT BE SHARED WITH OTHERS EXCEPT AS REQUIRED TO FULFILL THE OBLIGATION OF YOUR CONTRACT WITH THE CITY OF PHOENIX

NO.	REVISIONS / SUBMISSIONS	DATE
ISSUED FOR CONSTRUCTION	04/13/18	DATE
SUBMITTED FOR REVIEW	02/02/18	

**PHX AVT BYR**  
 CITY OF PHOENIX AVIATION DEPARTMENT  
**PHX SKY TRAIN**  
**STAGE 2 DESIGN**  
**500 S 24TH STREET**  
**PHOENIX, AZ 85034**

Designed by:	ACK
Drawn by:	MWK
Checked by:	SES
Date:	04/13/2018
Dwg scale:	1/16" = 1'-0"
CIP No.:	AV10000011
KIVA No.:	07-5204

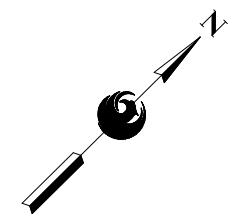
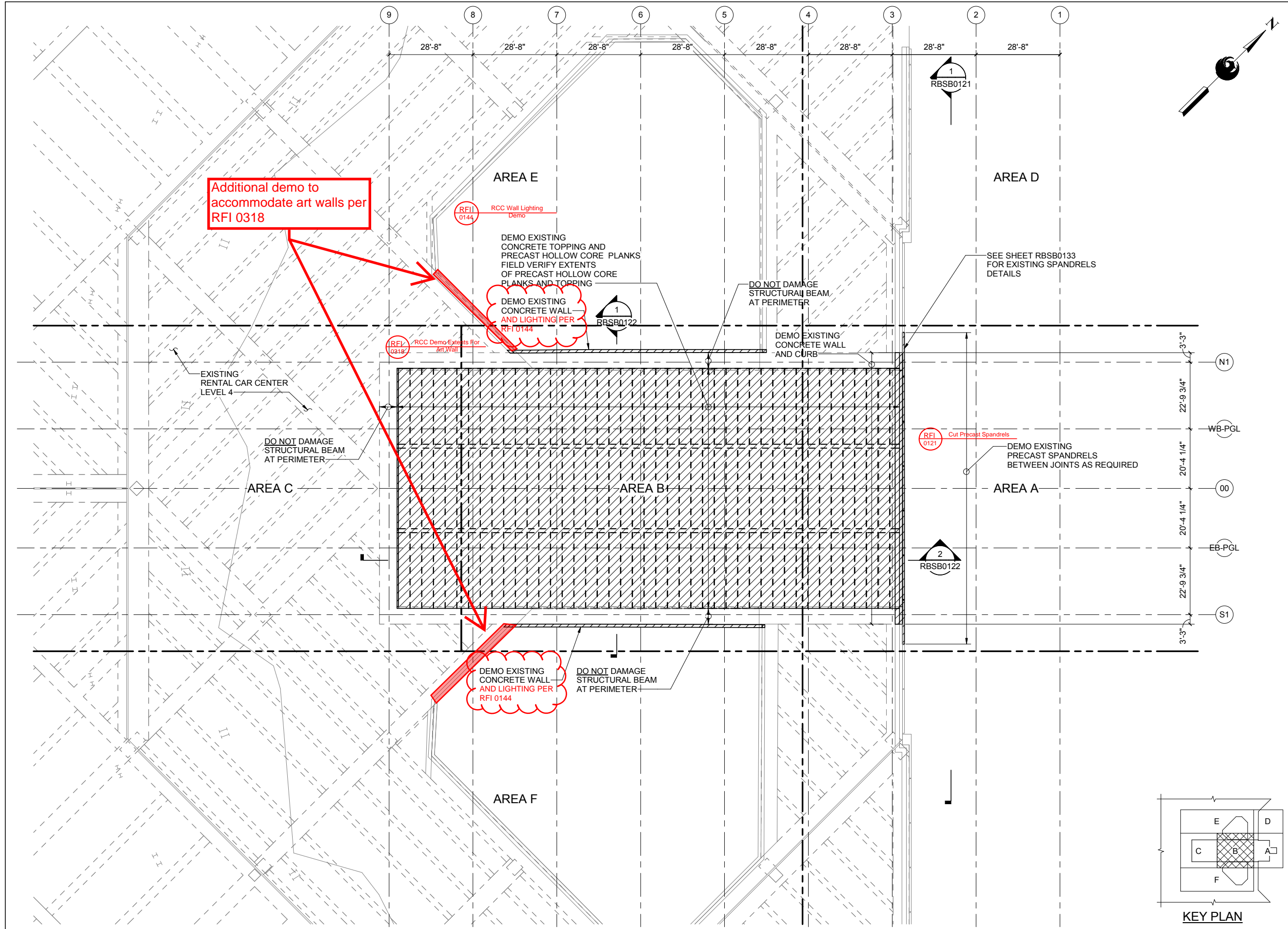
STAGE 2 - B03 DESIGN SUBMISSION

**RCC STATION  
 STRUCTURAL  
 GUIDEWAY DEMO PLAN**

Package: **B03 - RBSB0102** Sheet Reference No:  
 V1 - 229 of 339

Project Number: 62421  
 4/11/2018 9:22:19 PM  
 Local File: AV10000011-S2-RCSBXX01\_LR17\_A380\_detached.rvt  
 Central File: BIM 360/62421 - Phoenix Sky Train Project - Stage 2/02/2421\_FR01\_S\_central\_LR17\_A380.rvt

**GUIDEWAY DEMO PLAN**  
 SCALE: 1/16" = 1'-0"



Professional Engineer Seal: **PHOENIX** STATE OF ARIZONA, No. 17270, Exp. 12/31/2021

Design Consultant: **Gannett Fleming**

PER CITY OF PHOENIX ORDINANCE G-4396, THESE PLANS ARE FOR OFFICIAL USE ONLY AND MAY NOT BE SHARED WITH OTHERS EXCEPT AS REQUIRED TO FULFILL THE OBLIGATION OF YOUR CONTRACT WITH THE CITY OF PHOENIX

NO.	REVISIONS / SUBMISSIONS	DATE
ISSUED FOR CONSTRUCTION	04/13/18	DATE
SUBMITTED FOR REVIEW	02/02/18	DATE

**PHX AVIATION DEPARTMENT**

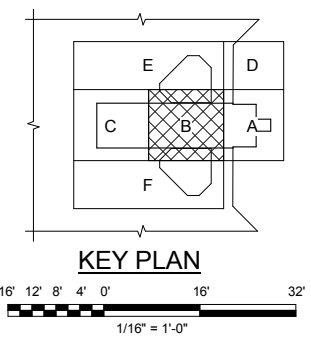
**PHX SKY TRAIN**

**STAGE 2 DESIGN**

**500 S 24TH STREET**

**PHOENIX, AZ 85034**

Designed by:	ACK
Drawn by:	MWK
Checked by:	SES
Date:	04/13/2018
Dwg scale:	1/16" = 1'-0"
CIP No.:	AV10000011
KIVA No.:	07-5204



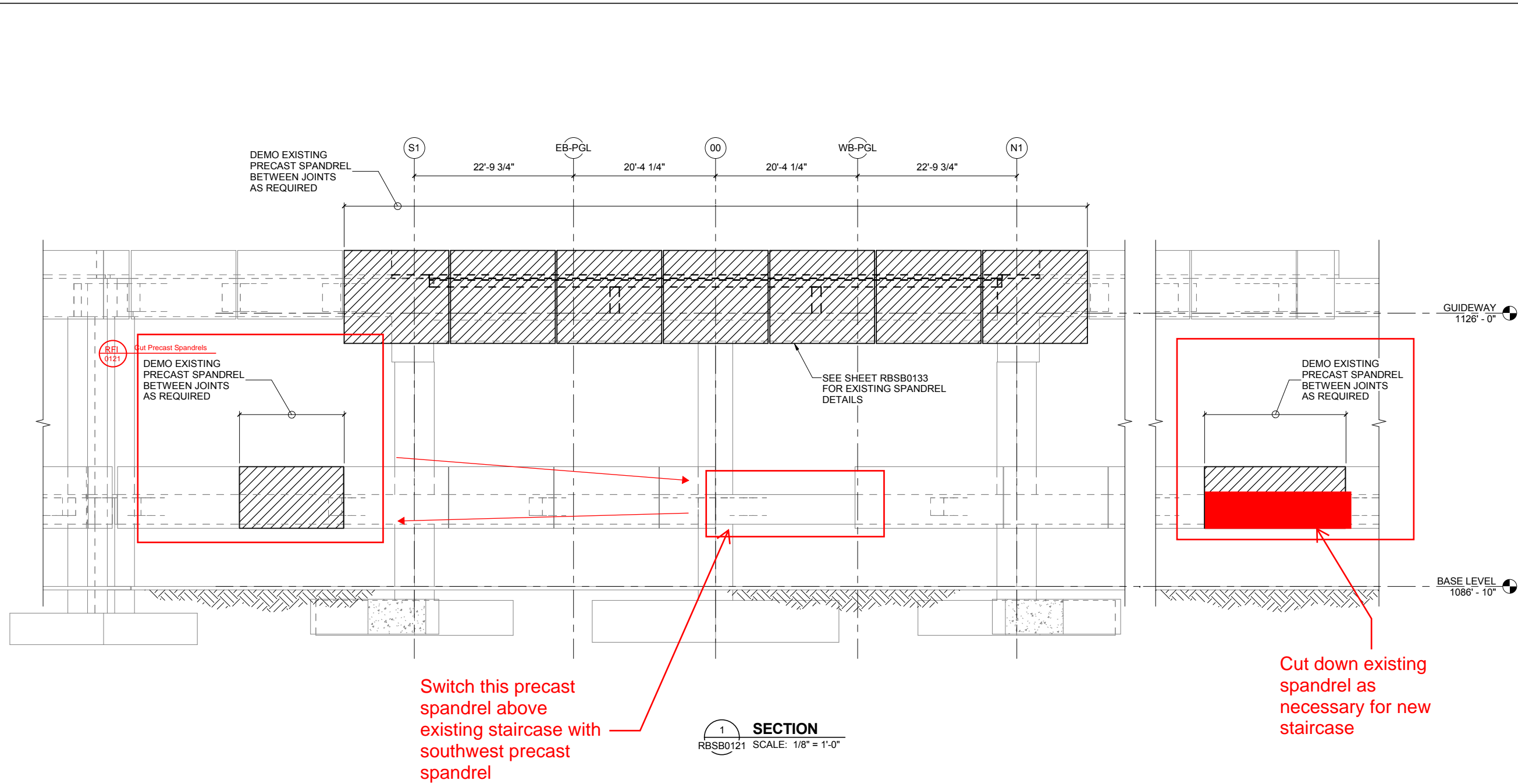
**EXISTING PLATFORM DEMO PLAN**  
SCALE: 1/16" = 1'-0"

STAGE 2 - B03 DESIGN SUBMISSION

**RCC STATION STRUCTURAL PLATFORM DEMO PLAN**

Package: **B03 - RBSB0103** Sheet Reference No: **V1 - 230 of 339**

Project Number: 02421  
4/11/2018 9:22:21 PM  
Local File: AV10000011-S2-RCSBXX01\_LR17\_A380\_detached.rvt  
Central File: BIM 360/02421 - Phoenix Sky Train Project - Stage 2/02/2018\_FR01\_S\_central\_LR17\_A380.rvt



1 SECTION  
RBSB0121 SCALE: 1/8" = 1'-0"

Project Number: 62421  
4/11/2018 9:22:23 PM  
Local File: AV10000011-S2-RCSBXX01\_LR17\_A380\_detailed.rvt  
Central File: BIM 360/62421 - Phoenix Sky Train Project - Stage 2/062421\_FR01\_S\_central\_LR17\_A380.rvt

Professional Engineer Seal: **PHOENIX** STATE OF ARIZONA  
SPANDEE SWEETEN  
04/13/2018  
Design Consultant  
**Gannett Fleming**  
Design Consultant

PER CITY OF PHOENIX ORDINANCE G-4396, THESE PLANS ARE FOR OFFICIAL USE ONLY AND MAY NOT BE SHARED WITH OTHERS EXCEPT AS REQUIRED TO FULFILL THE OBLIGATION OF YOUR CONTRACT WITH THE CITY OF PHOENIX.

NO.	REVISIONS / SUBMISSIONS	DATE
ISSUED FOR CONSTRUCTION	04/13/18	DATE
SUBMITTED FOR REVIEW	02/02/18	

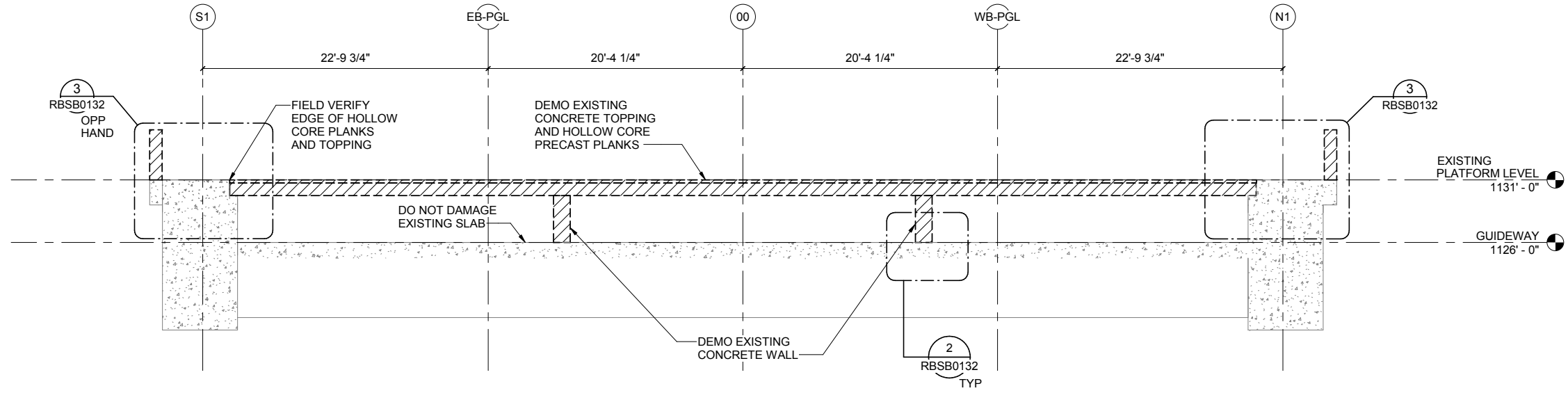
**PHX AVT BYR**  
CITY OF PHOENIX AVIATION DEPARTMENT

**PHX SKY TRAIN  
STAGE 2 DESIGN  
500 S 24TH STREET  
PHOENIX, AZ 85034**

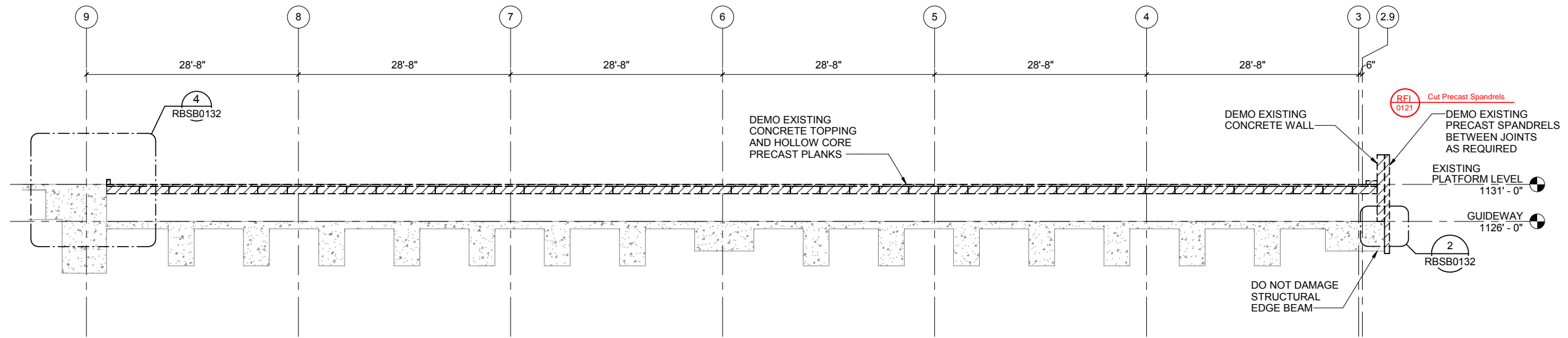
Designed by:	ACK
Drawn by:	MWK
Checked by:	SES
Date:	04/13/2018
Dwg scale:	1/8" = 1'-0"
CIP No.:	AV10000011
KIVA No.:	07-5204

STAGE 2 - B03 DESIGN SUBMISSION

**RCC STATION  
STRUCTURAL  
FULL SECTIONS**



**1 SECTION**  
RBSB0122 SCALE: 3/16" = 1'-0"



**2 SECTION**  
RBSB0122 SCALE: 1/8" = 1'-0"



Design Sub-Consultant  
Gannett Fleming  
Design Consultant

PER CITY OF PHOENIX ORDINANCE G-4396, THESE PLANS ARE FOR OFFICIAL USE ONLY AND MAY NOT BE SHARED WITH OTHERS EXCEPT AS REQUIRED TO FULFILL THE OBLIGATION OF YOUR CONTRACT WITH THE CITY OF PHOENIX

NO.	REVISIONS / SUBMISSIONS	DATE
ISSUED FOR CONSTRUCTION	04/13/18	DATE
SUBMITTED FOR REVIEW	02/02/18	

**PHX Sky Train**  
CITY OF PHOENIX AVIATION DEPARTMENT  
**PHX SKY TRAIN**  
**STAGE 2 DESIGN**  
**500 S 24TH STREET**  
**PHOENIX, AZ 85034**

Designed by:	ACK
Drawn by:	MWK
Checked by:	SES
Date:	04/13/2018
Dwg scale:	As indicated
CIP No.:	AV10000011
KIVA No.:	07-5204

STAGE 2 - B03 DESIGN SUBMISSION

**RCC STATION**  
**STRUCTURAL**  
**FULL SECTIONS**

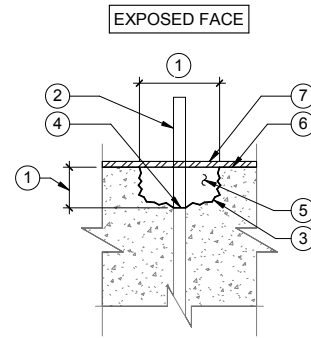
**EXPOSED REINFORCEMENT REPAIR PROCEDURES USE THIS DETAIL WITH LONG TERM EXPOSURE TO WATER/MOISTURE FOR ALL OTHER AREAS SEE DETAIL 2 THIS SHEET**

1. REMOVE EXISTING CONCRETE (DIMPLE) AROUND REINFORCEMENT TO A DIAMETER OF 2.5 TIMES THE REBAR DIAMETER (1-1/2 -INCH DIAMETER MINIMUM) AND A MINIMUM DEPTH OF 1-INCH. DIMPLE SIDES SHALL BE NEAR PERPENDICULAR TO EXPOSED SURFACE FACE.
2. REMOVE/ TORCH CUT THE EXPOSED REINFORCING END TO THE BOTTOM OF DIMPLE.
3. ROUGHEN AND CLEAN DIMPLE SURFACE TO A MINIMUM SURFACE PROFILE OF +/- 1/16 INCH.
4. COAT END OF EXPOSED REINFORCEMENT WITH SIKA ARMATEC 110 EPOCEM. SIKA ARMATEC REQUIRES TWO COATS WITH A DRYING PERIOD IN-BETWEEN COATS. SEE PRODUCT LITERATURE FOR ADDITIONAL INFORMATION.
5. AFTER SECOND COAT OF SIKA ARMATEC HAS DRIED, FILL DIMPLE USING A REPAIR MORTAR SUCH AS SIKATOP 122 PLUS.

**SURFACE PROTECTION PROCEDURES:**

6. SEE OVERALL SECTION FOR EXTENT OF COATING. CONCRETE SURFACES SHALL BE CLEAN AND FREE FROM ANY DUST, LAITANCE, GREASE, AND ALL BOND-INHIBITING MATERIALS.
7. APPLY TWO COATS OF SIKAGARD 62 TO THE SURFACE OF THE CONCRETE. SEE PRODUCT LITERATURE FOR ADDITIONAL INFORMATION.

**NOTE:**  
REFERENCE PRODUCT LITERATURE FOR SURFACE PREPARATIONS, MIXING PROCEDURE, POT LIFE, APPLICATION PROCEDURES, AND ANY ADDITIONAL INFORMATION. ANY PRODUCT SUBSTITUTIONS SHALL BE SUBMITTED TO THE ENGINEER FOR APPROVAL. PRODUCTS SHALL BE APPROVED FOR CONTACT WITH POTABLE WATER.

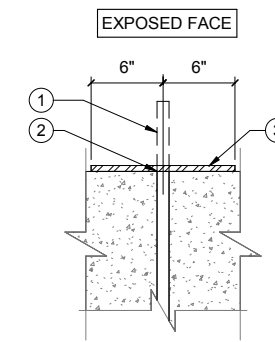


**DIMPLE SECTION**  
SEE EXPOSED REINFORCEMENT REPAIR PROCEDURES FOR KEYNOTES

**EXPOSED REINFORCEMENT REPAIR PROCEDURES**

1. CUT REINFORCING TO FACE OF CONCRETE.
2. GRIND SMOOTH CONCRETE FACE - REMOVE ALL REINFORCING SLAG.
3. APPLY TWO COATS OF SIKAGARD 62 WITH DRY TIME BETWEEN COATS. EXTEND SIKAGARD 62 6" BEYOND REINFORCING.

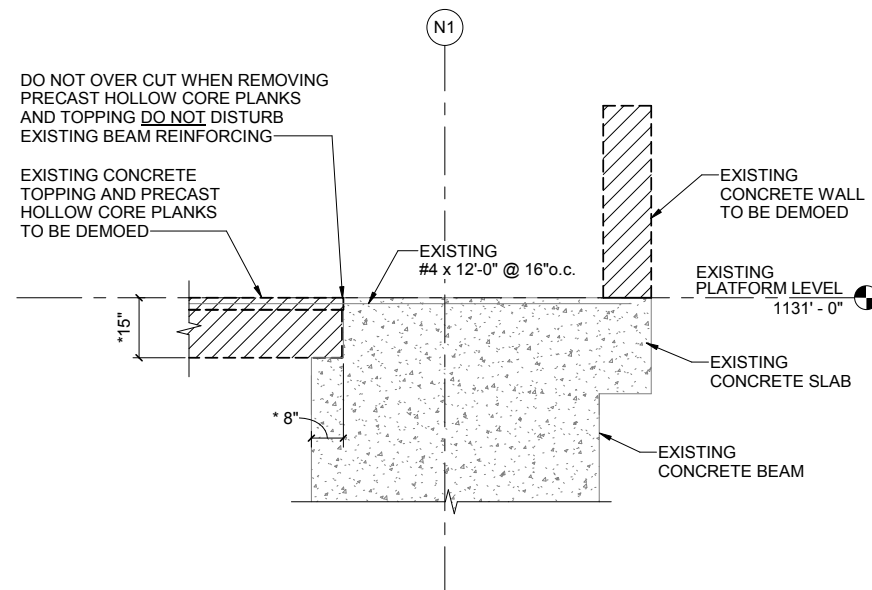
**NOTE:**  
REFERENCE PRODUCT LITERATURE FOR SURFACE PREPARATIONS, MIXING PROCEDURE, POT LIFE, APPLICATION PROCEDURES, AND ANY ADDITIONAL INFORMATION. ANY PRODUCT SUBSTITUTIONS SHALL BE SUBMITTED TO THE ENGINEER FOR APPROVAL. PRODUCTS SHALL BE APPROVED FOR CONTACT WITH POTABLE WATER.



SEE EXPOSED REINFORCEMENT REPAIR PROCEDURES FOR KEYNOTES

**EXPOSED REINF REPAIR PROCEDURE DETAIL FOR REINF EXPOSED TO SOIL/WATER**

1 RBSB0132 SCALE: N.T.S.



**NOTE:**  
CONTRACTOR TO VERIFY EXISTING DIMENSIONS

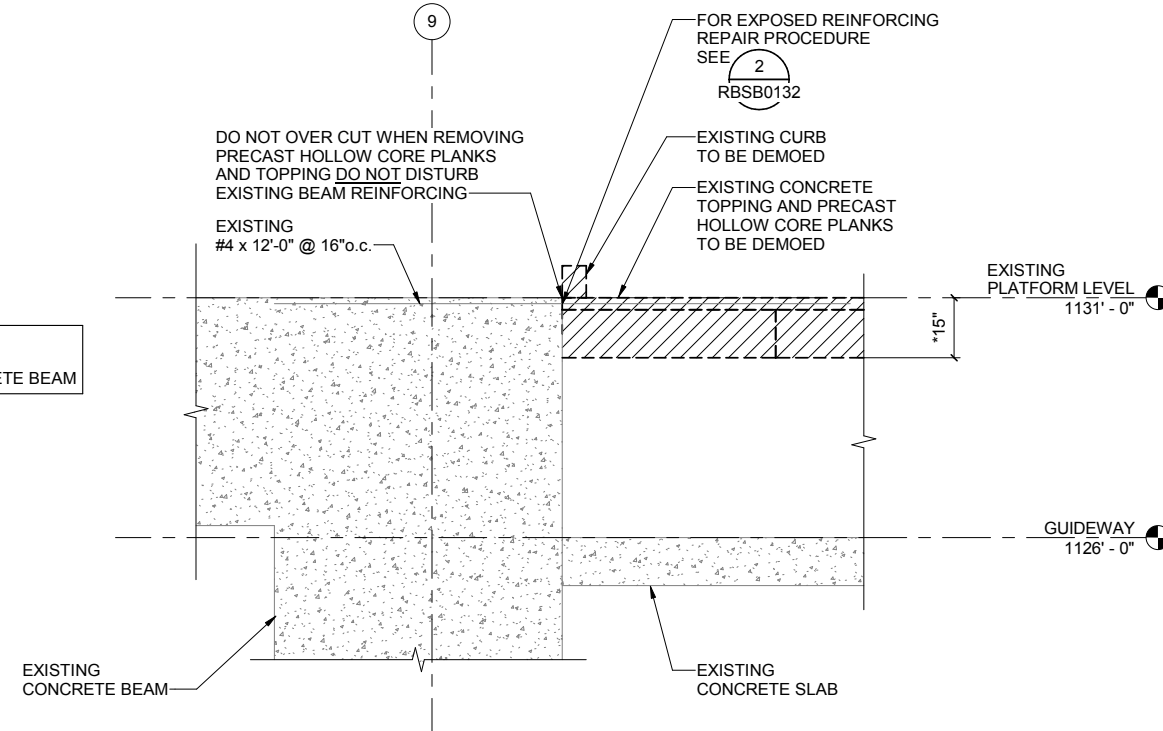
ALL CONNECTIONS TO BE FIELD VERIFIED

**3 EXISTING PRECAST HOLLOW CORE PLANKS END CONNECTION**

RBSB0132 SCALE: 1/2" = 1'-0"

**EXPOSED REINF REPAIR PROCEDURE DETAIL**

2 RBSB0132 SCALE: N.T.S.



**NOTE:**  
CONTRACTOR TO VERIFY EXISTING DIMENSIONS

ALL CONNECTIONS TO BE FIELD VERIFIED

**4 EXISTING PRECAST HOLLOW CORE PLANKS END CONNECTION**

RBSB0132 SCALE: 1/2" = 1'-0"



Design Sub-Consultant

Design Consultant

**Gannett Fleming**

PER CITY OF PHOENIX ORDINANCE G-4396, THESE PLANS ARE FOR OFFICIAL USE ONLY AND MAY NOT BE SHARED WITH OTHERS EXCEPT AS REQUIRED TO FULFILL THE OBLIGATION OF YOUR CONTRACT WITH THE CITY OF PHOENIX

ISSUED FOR CONSTRUCTION	04/13/18	DATE
SUBMITTED FOR REVIEW	02/02/18	
NO. REVISIONS / SUBMISSIONS		

**PHX Sky Train**  
CITY OF PHOENIX AVIATION DEPARTMENT

**PHX SKY TRAIN  
STAGE 2 DESIGN  
500 S 24TH STREET  
PHOENIX, AZ 85034**

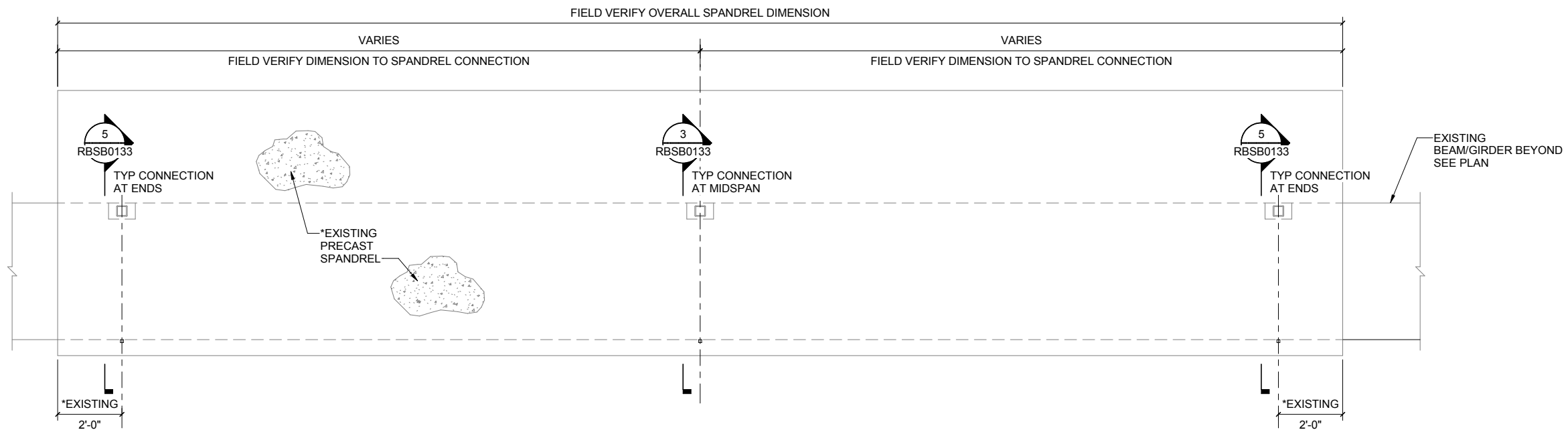
Designed by:	AKK	SES	Date:	04/13/2018
Drawn by:	MWK		Dwg scale:	As indicated
Checked by:			CIP No.:	AV10000011
			KIVA No.:	07-5204

STAGE 2 - B03 DESIGN SUBMISSION

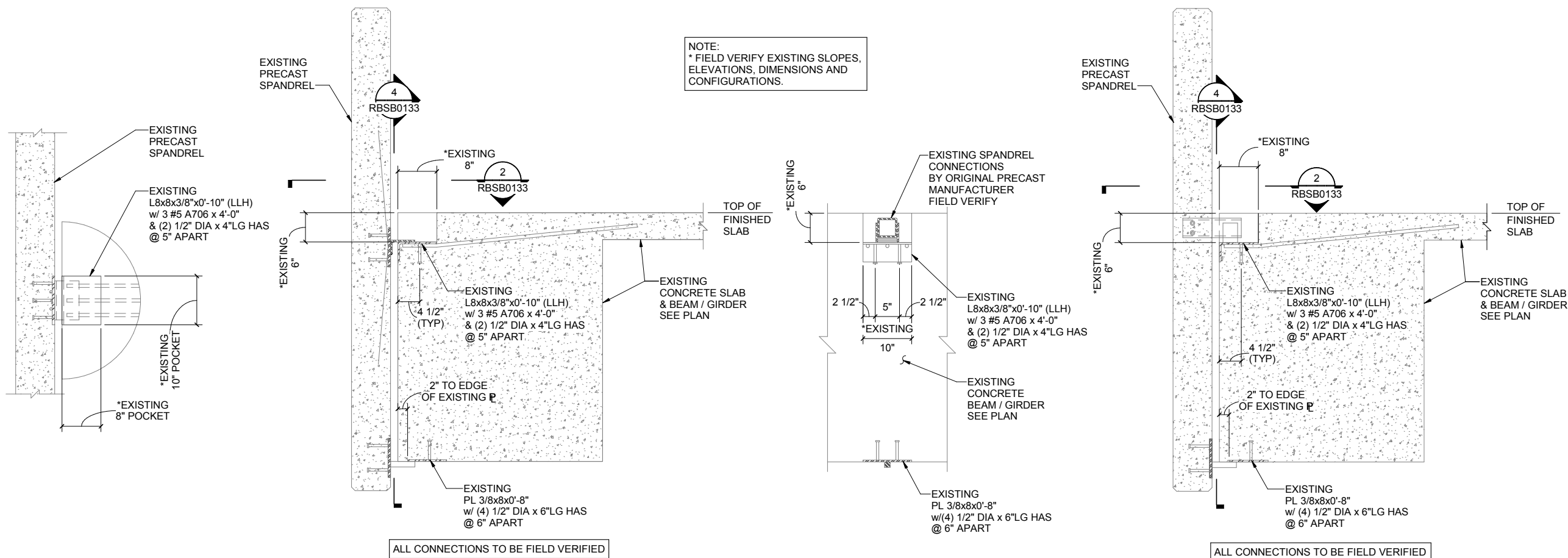
**RCC STATION  
STRUCTURAL  
DEMOS SECTIONS AND DETAILS**

Package: Sheet Reference No:

**B03 - RBSB0132**  
V1 - 233 of 339



1 **TYPICAL EXISTING SPANDREL ELEVATION**  
RBSB0133 SCALE: 1/2" = 1'-0"



2 **PLAN VIEW DETAIL**  
RBSB0133 SCALE: 1" = 1'-0"

3 **EXISTING PRECAST SPANDREL MIDSPAN CONNECTION**  
RBSB0133 SCALE: 1" = 1'-0"

4 **ELEVATION**  
RBSB0133 SCALE: 1" = 1'-0"

5 **EXISTING PRECAST SPANDREL END CONNECTION**  
RBSB0133 SCALE: 1" = 1'-0"

NOTE:  
\* FIELD VERIFY EXISTING SLOPES,  
ELEVATIONS, DIMENSIONS AND  
CONFIGURATIONS.

Local File: AV10000011-S2-RCSBXX01\_LR17\_A380\_detach.rvt  
Central File: BIM 360/62421 - Phoenix Sky Train Project - Stage 2/062421\_FR01\_S\_central\_LR17\_A380.rvt  
Project Number: 62421  
4/11/2018 9:22:34 PM

PHX Sky Train  
STAGE 2 DESIGN  
500 S 24TH STREET  
PHOENIX, AZ 85034

City of Phoenix Aviation Department

Design Consultant  
**Gannett Fleming**

PER CITY OF PHOENIX ORDINANCE G-4396, THESE PLANS ARE FOR OFFICIAL USE ONLY AND MAY NOT BE SHARED WITH OTHERS EXCEPT AS REQUIRED TO FULFILL THE OBLIGATION OF YOUR CONTRACT WITH THE CITY OF PHOENIX

NO.	REVISIONS / SUBMISSIONS	DATE
ISSUED FOR CONSTRUCTION	04/13/18	DATE
SUBMITTED FOR REVIEW	02/02/18	DATE

Designed by:	AKK
Drawn by:	MWK
Checked by:	SES
Date:	04/13/2018
Dwg scale:	As indicated
CIP No.:	AV10000011
KIVA No.:	07-5204

STAGE 2 - B03 DESIGN SUBMISSION

**RCC STATION  
STRUCTURAL  
DEMO SECTIONS AND DETAILS**

Package: **B03 - RBSB0133**  
Sheet Reference No: **V1 - 234 of 339**