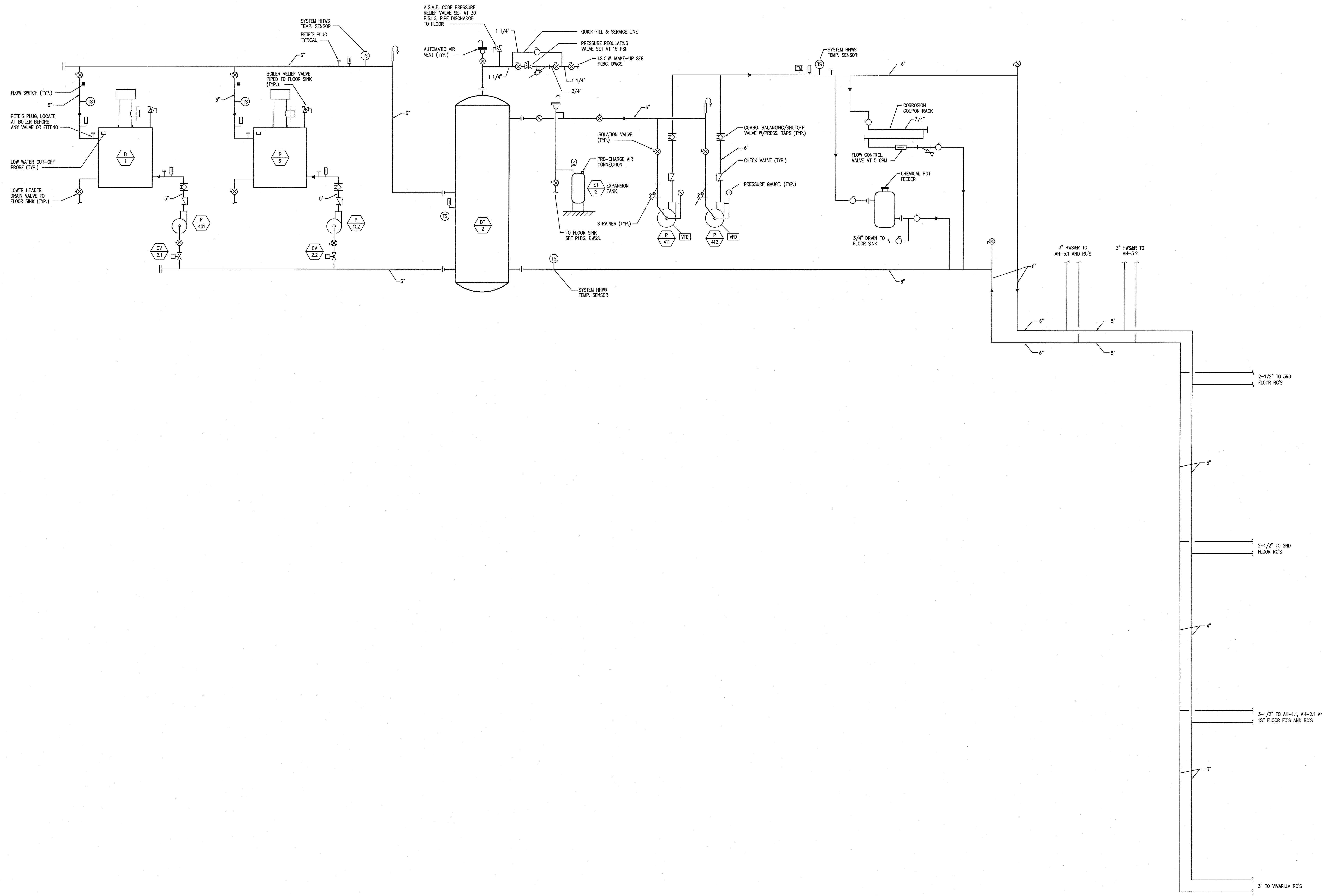


ISSUED FOR	DATE
Final Schematic Design	07/14/2008
Schematic Design	07/28/2008
BID PK #1	10/06/2008
50% Progress	10/24/2008
BID PK #1 80 CD	12/01/2008
BID PK #1 100 CD	02/16/2009
BID PK #2 100 CD	03/26/2009
100% CD	06/09/2009
CD 4	01/07/2010
COB 1	02/26/2010
COB 2	02/28/2010
CD 4	04/15/2010



APPROVED  
PRE AND PAID ONLY  
APR 15 2010  
STATE OF CALIFORNIA  
MECHANICAL

CA	U.C.S.D.
12/10	PRELIMINARY DRAWINGS
	PROGRESS DRAWINGS
	REVIEW DRAWINGS
	CONSTRUCTION DRAWINGS

**SANFORD CONSORTIUM FOR REGENERATIVE MEDICINE**  
 2880 TORREY PINES SCENIC DRIVE  
 LA JOLLA, CALIFORNIA 92037

CONSULTANT  
 Xerith  
 10000 Wilshire Blvd, Suite 1000  
 Los Angeles, CA 90024  
 (310) 206-1000  
 www.xerith.com

Landmark/Phelps Consortium LLC  
 1000 Wilshire Blvd, Suite 1000  
 Los Angeles, CA 90024  
 (310) 206-1000

**FENTRESS ARCHITECTS**  
 4170 La Tijera Blvd, Suite 200  
 Inglewood, CA 90304  
 (310) 516-1000

**DAVIS DAVIS**  
 1001 Pico Blvd, Suite 200  
 Los Angeles, CA 90015  
 (213) 481-1000

STATE OF CALIFORNIA  
 MECHANICAL  
 APR 15 2010

SHEET NAME  
 MECHANICAL HEATING HOT  
 WATER PIPING SCHEMATIC

DRAWN BY: Author  
 PROJECT #: 200725.000  
 SHEET NUMBER  
**M4002**

MECHANICAL HEATING HOT WATER PIPING SCHEMATIC

SCALE NONE 1

12/22/2008 4:52:10 PM  
 File Path  
 C:\Users\Author\Documents\200725\MECH\M4002.dwg

Warning: It is a violation of the law for any person, unless acting under the direction of a licensed architect, to alter an item in any way. If an item in this document is altered, the altering architect, if other than the architect of record, shall affix to the item his seal and the notation "altered by" followed by his signature and the date of such alteration, and the specific description of the alteration.