

- GENERAL NOTES:**
1. PROVIDE (2) CAT-6 DATA DROPS FOR EACH DATA PORT LOCATION U.O.N.
 2. ALL DEVICES AND SLEEVES IN FIRE RATED WALLS SHALL BE UL RATED FOR APPLICATION AND SHALL BE FIRESTOPPED WITH APPROPRIATE UL RATED SYSTEM.
 3. PROVIDE 1" C.O. STUB WITH PULL STRING, TO ACCESSIBLE CEILING SPACE FOR ALL WALL MOUNTED DEVICES, U.O.N.
 4. REFER TO ARCHITECTURAL AND ELECTRICAL SHEETS FOR ADDITIONAL MOUNTING INFORMATION, COORDINATE DEVICE MOUNTING HEIGHTS WITH ARCHITECTURAL ENLARGED PLANS AND OTHER TRADES IN THE FIELD.
 5. ALL ACCESS CONTROL DOORS SHALL INTERFACE WITH FIRE ALARM CONTROL PANEL.
 6. PROVIDE CONTROL RELAY(S) AS NEEDED, TO INTERFACE FIRE DOOR HOLDERS.
 7. ALL LOW VOLTAGE CABLING SHALL BE PULLED TO IDF (ROOM 4812), U.O.N.
 8. WIRELESS ACCESS POINTS: PROVIDE 4" x 4" JUNCTION BOX WITH SINGLE GANG TRIM RING, MOUNTED IN THE ACCESSIBLE CEILING SPACE 6" TO 18" ABOVE FINISHED CEILING, WITH (2) CAT-6 DROPS AND 20' SERVICE LOOP PER LOCATION U.O.N.
- KEY NOTES:**
- 1. SMOKE DETECTOR FOR ELEVATOR RECALL SERVICE.
 - 2. HEAT DETECTOR FOR ELEVATOR SHUNT TRIP SERVICE. INSTALL DETECTOR WITHIN 2FT OF SPRINKLER HEAD.
 - 3. RELAY MODULE FOR ELEVATOR RECALL. INSTALL MODULE WITHIN 5FT OF CONTROLLED CIRCUIT. TYPICAL OF (2).
 - 4. RELAY MODULE FOR ALTERNATE ELEVATOR RECALL. INSTALL MODULE WITHIN 5FT OF CONTROLLED CIRCUIT. TYPICAL OF (2).
 - 5. 4" x 4" JUNCTION BOX FOR ELEVATOR CAB TELEPHONES. PROVIDE (1) 1" C. TO ACCESSIBLE CEILING SPACE. PROVIDE (2) CAT 6 CABLES TO IDF (ROOM 1908). LEAVE EACH CABLE UNTERMINATED WITH APPROX. 12' OF SLACK AT THE ELEVATOR CONTROL PANEL. ELEVATOR CONTRACTOR TO PROVIDE CAB PHONE TERMINATIONS.

COPYRIGHT © FENTRESS ARCHITECTS

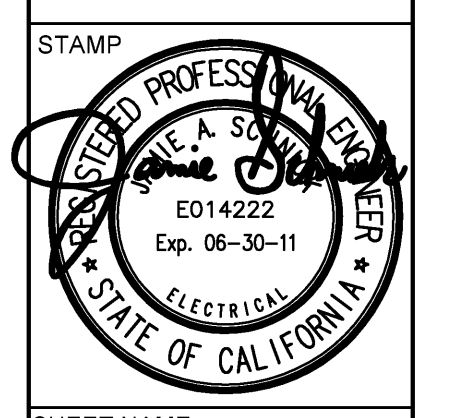
ISSUED FOR	DATE
Pre-Schematic Design	07/14/2008
Schematic Design	07/28/2008
BID PK #1	10/06/2008
50% Progress	10/24/2008
BID PK #1 80 CD	12/01/2008
BID PK #1 100 CD	02/16/2009
BID PK #2 100 CD	03/26/2009
100% CD	05/08/2009
CD 4	01/07/2010
COB 1	02/26/2010
COB 2	02/26/2010
CD 4	04/15/2010
RVP PERMIT	05/05/2010
AS#008 RE	07/01/2010
AS#005	07/06/2010
AS#015	07/09/2010
AS#004	07/12/2010
AS#008S	07/19/2010
AS#010	08/13/2010

SANFORD CONSORTIUM FOR REGENERATIVE MEDICINE
 2880 TORREY PINES SCENIC DRIVE
 LA JOLLA, CALIFORNIA 92037



FENTRESS ARCHITECTS
 415 Business Center, CO 80521
 303.737.8888

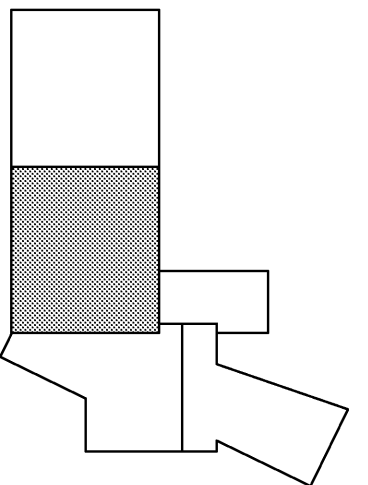
DAVIS ARCHITECTS
 1001 Park Avenue, San Anselmo, CA 94960



SHEET NAME:
 SIGNAL PARTIAL ROOF PLAN - ZONE 2

DRAWN BY: Author
 PROJECT # 200725.000
 SHEET NUMBER

E4252



SCALE
 1/4" = 1'-0" 1

SIGNAL PARTIAL ROOF PLAN - ZONE 2

10/22/2008 4:52:10 PM
 Eric S. Davis

Warning: It is a violation of the law for any person, unless acting under the direction of a licensed architect, to alter an item in any way. If an item in this document is altered, the altering architect, if other than the architect of record, shall affix to the item his seal and the notation "altered" followed by his signature and the date of such alteration, and the specific description of the alteration.