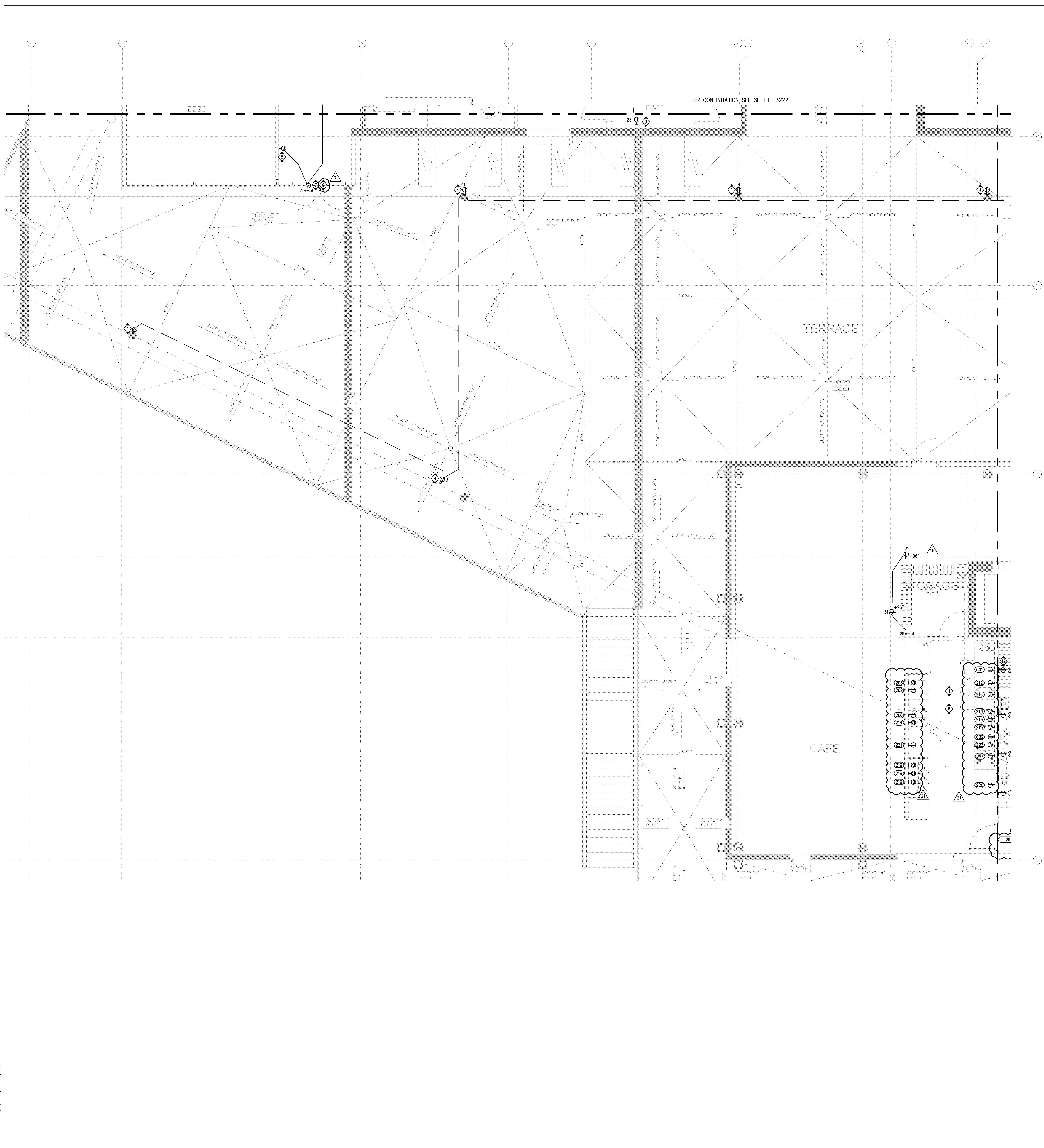


ISSUED FOR	DATE
Final Schematic Design	07/14/2008
Schematic Design	07/28/2008
BID PK #1	10/06/2008
50% Progress	10/24/2008
BID PK #1 80 CD	12/01/2008
BID PK #1 100 CD	02/16/2009
BID PK #2 100 CD	03/26/2009
100% CD	05/08/2009
CD 4	01/07/2010
COB 1	02/26/2010
COB 2	02/26/2010
CD 4	04/15/2010
RVP PERMIT	05/05/2010
AS1#008 R2	07/01/2010
AS1#009	07/06/2010
AS1#015	07/09/2010
AS1#004	07/12/2010
AS1#005 R3	07/19/2010
AS1#010	08/13/2010
AS1#011	08/27/2010
AS1#010	09/20/2010
AS1#021	11/05/2010
AS1#018	11/17/2010

- KEY NOTES**
- 1. REFERENCE FOOD SERVICE DRAWINGS FOR MOUNTING HEIGHTS AND EXACT LOCATION OF DEVICES.
 - 2. NOT USED.
 - 3. NOT USED.
 - 4. PROVIDE "WEATHER PROOF WALE IN USE" DUPLEX RECEPTACLE IN LIGHT POLE BASE.
 - 5. PROVIDE J-BOX FOR VIDEO DISPLAY. FIELD COORDINATE MOUNTING HEIGHT.
 - 6. PROVIDE ALL 15A AND 20A 125V RECEPTACLES IN KITCHEN WITH GFCI PROTECTION.
 - 7. PROVIDE JUNCTION BOX AND CONNECT TO ADA DOOR OPERATOR.
 - 8. ROUTE 3/4" CONDUIT FOR ADA DOOR ACTUATOR WALL PLUGS. COORDINATE LOCATION WITH ARCHITECTURAL PLANS.
 - 9. CONNECT TO SECURITY POWER SUPPLY.



FOR CONTINUATION SEE SHEET E3224

KITCHEN EQUIPMENT SCHEDULE						
EQ #	EQUIPMENT NAME	VOLTAGE	AMPS	CONNECTION	CIRCUIT	FEEDER
020	CONV. RECEPT.	120	-	RECEPTACLE	2KA-27	2#12, 1#12 G.
021	CONV. RECEPT.	120	-	RECEPTACLE	2KA-29	2#12, 1#12 G.
022	CONV. RECEPT.	120	-	RECEPTACLE	2KA-10	2#12, 1#12 G.
023	CONV. RECEPT.	120	-	RECEPTACLE	2KA-12	2#12, 1#12 G.
024	CONV. RECEPT.	120	-	RECEPTACLE	2KA-14	2#12, 1#12 G.
025	CONV. RECEPT.	120	-	RECEPTACLE	2KA-16	2#12, 1#12 G.
026	CONV. RECEPT.	120	-	RECEPTACLE	2KA-36	2#12, 1#12 G.
027	POS	120	5	RECEPTACLE	2KA-3	2#12, 1#12 G.
028	REFRIGERATOR	208	11.7	14-20R	2KA-5,7	2#12, 1#12 G.
029	REFRIGERATOR	120	8.8	RECEPTACLE	2KA-9	2#12, 1#12 G.
030	BLENDER	120	5.8	L5-20R	2KB-1	3#12, #12 G.
031	BLENDER	120	5.8	L5-20R	2KB-3	3#12, #12 G.
032	COFFEE/ESPRESSO MAKER	208	3.0	NEMA3-30R	2KA-11,13	2#8, 1#10 G. VERIFY RECEPTACLE WITH EQUIPMENT.
033	ICE MAKER	120	3.4	RECEPTACLE	2KA-28	2#12, 1#12 G.
034	COFFEE MAKER	120/208	28.9	HARD WIRED	2KA-17,19	3#8, 1#8 G. USE 60A/2P/4X DISCONNECT
035	GRIDDLE	120	15	RECEPTACLE	2KA-21	2#12, 1#12 G.
036	SOUP WELLS	208	3.5	NEMA3-20R	2KA-23,25	2#12, 1#12 G. VERIFY RECEPTACLE WITH EQUIPMENT.
037	SOUP WELLS	208	3.5	NEMA3-20R	2KA-32,34	2#12, 1#12 G. VERIFY RECEPTACLE WITH EQUIPMENT.
038	SOUP WELLS	208	3.5	NEMA3-20R	2KB-9,11	2#12, 1#12 G. VERIFY RECEPTACLE WITH EQUIPMENT.
039	REFRIGERATOR	120	12	RECEPTACLE	2KA-15	2#12, 1#12 G.
040	REFRIGERATOR	120	8.8	RECEPTACLE	2KA-35	2#12, 1#12 G.
041	TOASTER	208	15.9	NEMA3-20R	2KB-5,7	2#12, 1#12 G.
042	FOOD SLICER	120	5	RECEPTACLE	2KA-4	2#12, 1#12 G.
043	REFRIGERATOR	120	10	RECEPTACLE	2KA-6	2#12, 1#12 G.
044	REFRIGERATOR	120	12.4	RECEPTACLE	2KA-8	2#12, 1#12 G.

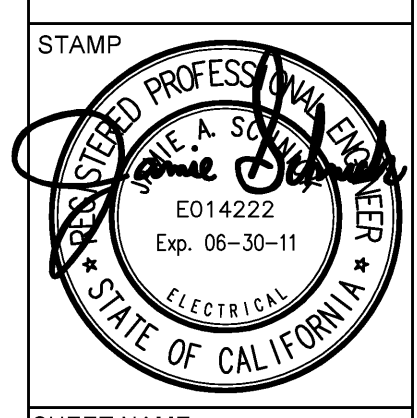
EQUIPMENT CALLOUTS CORRESPOND TO THE FOOD SERVICE PLANS.

SANFORD CONSORTIUM FOR REGENERATIVE MEDICINE
 2880 TORREY PINES SCENIC DRIVE
 LA JOLLA, CALIFORNIA 92037



LANFORD/PHILIPS CONSORTIUM LLC
 415 Broadway, Denver, CO 80202
 303.733.9888

FENTRESS ARCHITECTS
 415 Broadway, Denver, CO 80202
 303.733.9888



SHEET NAME: PARTIAL POWER SECOND FLOOR PLAN - ZONE 3
 DRAWN BY: Author
 PROJECT #: 200728.000
 SHEET NUMBER

E3223

10/22/2008 4:42:10 PM
 F:\Projects\200728\200728_Power\200728_Power.dwg

Warning: It is a violation of the law for any person, unless acting under the direction of a licensed architect, to alter an item in any way. If an item in this document is altered, the altering architect, if other than the architect of record, shall affix the item his seal and the notation "altered" by follows by his signature and the date of such alteration, and the specific description of the alteration.