

ISSUED FOR	DATE
Pre-Schematic Design	07/14/2008
Schematic Design	07/28/2008
BID PK #1	10/08/2008
90% Program	10/24/2008
BID PK #1 80 CD	12/12/2008
BID PK #1 100 CD	02/18/2009
BID PK #2 100 CD	03/26/2009
100% CD	06/26/2009
CD 4	01/07/2010
COB 1	02/28/2010
COB 2	02/28/2010
CD 4	04/15/2010
RW PERMIT	05/05/2010
ASH008 RT	07/01/2010
ASH009	07/06/2010
ASH015	07/09/2010
ASH004	07/12/2010
ASH008GZ	07/18/2010
ASH010	08/13/2010
ASH011	08/27/2010
ASH003	08/27/2010
ASH018	11/17/2010
ASH028	12/15/2010
ASH008GZ	01/14/2011
ASH009	01/21/2011

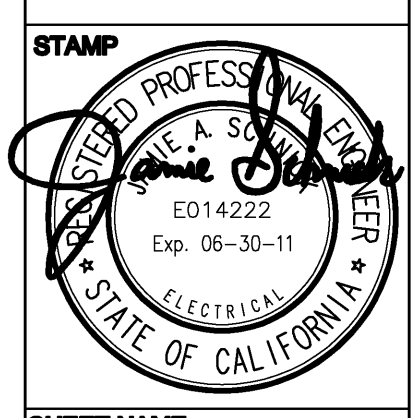
- GENERAL NOTES:
1. SEAL ALL CONDUIT AND BOXES ENTERING/EXITING ANIMAL HOLDING ROOMS WITH SILICON CAULK.
 2. MOUNT ALL ANIMAL CAGE RECEPTACLES AT +72" AFF. UON.
 3. VIVARIUM ELECTRICAL PANELS ARE LOCATED IN THE INTERSTITIAL SPACE.
 4. PROVIDE WEATHERPROOF ELECTRICAL DEVICES THROUGHOUT ANIMAL HOLDING AND PROCEDURE ROOMS, CORRIDORS, AND WASH DOWN AREAS.

- KEY NOTES:
- ◇ PROVIDE TWO RECEPTACLES ON SAME CIRCUIT. TYPICAL FOR BIO SAFETY CABINETS.
 - ◇ CONNECT TO DOOR SECURITY XMR.

SANFORD CONSORTIUM FOR REGENERATIVE MEDICINE
 2880 TORREY PINES SCENIC DRIVE
 LA JOLLA, CALIFORNIA 92037



FENTRESS ARCHITECTS
 400 Broadway, Suite 200
 San Francisco, CA 94111
 415.774.8888
DAVIS ENGINEERS
 2001 Park Avenue
 San Diego, CA 92103
 619.594.8888



SHEET NAME:
 PARTIAL POWER VIVARIUM
 PLAN - ZONE 1
 DRAWN BY: Author
 PROJECT #: 200726.000
 SHEET NUMBER

E32B21

