

ISSUED FOR	DATE
Pre-Schematic Design	07/14/2008
Schematic Design	07/28/2008
BID PK #1	10/06/2008
50% Progress	10/24/2008
BID PK #1 80 CD	12/01/2008
BID PK #1 100 CD	02/18/2009
BID PK #2 100 CD	03/26/2009
100% CD	05/08/2009
CD 4	01/07/2010
COB 1	02/26/2010
COB 2	03/28/2010
CD 4	04/15/2010

GENERAL NOTES:

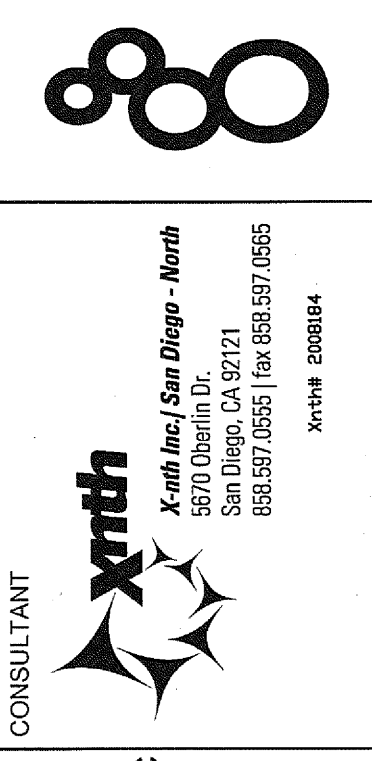
1. REFER TO ARCHITECTURAL PLANS AND ELEVATIONS FOR COORDINATION OF EXACT LOCATION AND MOUNTING HEIGHTS OF LUMINAIRES AND ELECTRICAL DEVICES.

KEY NOTES:

◇ PROVIDE CONNECTION TO EMERGENCY BATTERY PACK AREA OF LOCAL SWITCHING.

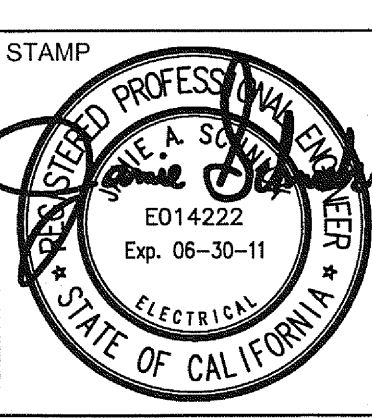
◇ PROVIDE FINELITE PERSONAL LIGHTING SYSTEM WITH ONE (1) 60 WATT POWER SUPPLY #PS-60W, TWO (2) 9W DESK LAMPS WITH MOUNTING PLATES #DL-9W-S-MP-S, TWO (2) 21" LONG 9W UNDERCABINET LIGHTS #UC-9W-S, ONE (1) OCCUPANCY SENSOR #OSF-110, ONE (1) POWER CABLE WITH ROCKER SWITCH #PC-12 AND ONE (1) PATCH CABLE #PC-6.

SANFORD CONSORTIUM FOR REGENERATIVE MEDICINE
 2880 TORREY PINES SCENIC DRIVE
 LA JOLLA, CALIFORNIA 92037



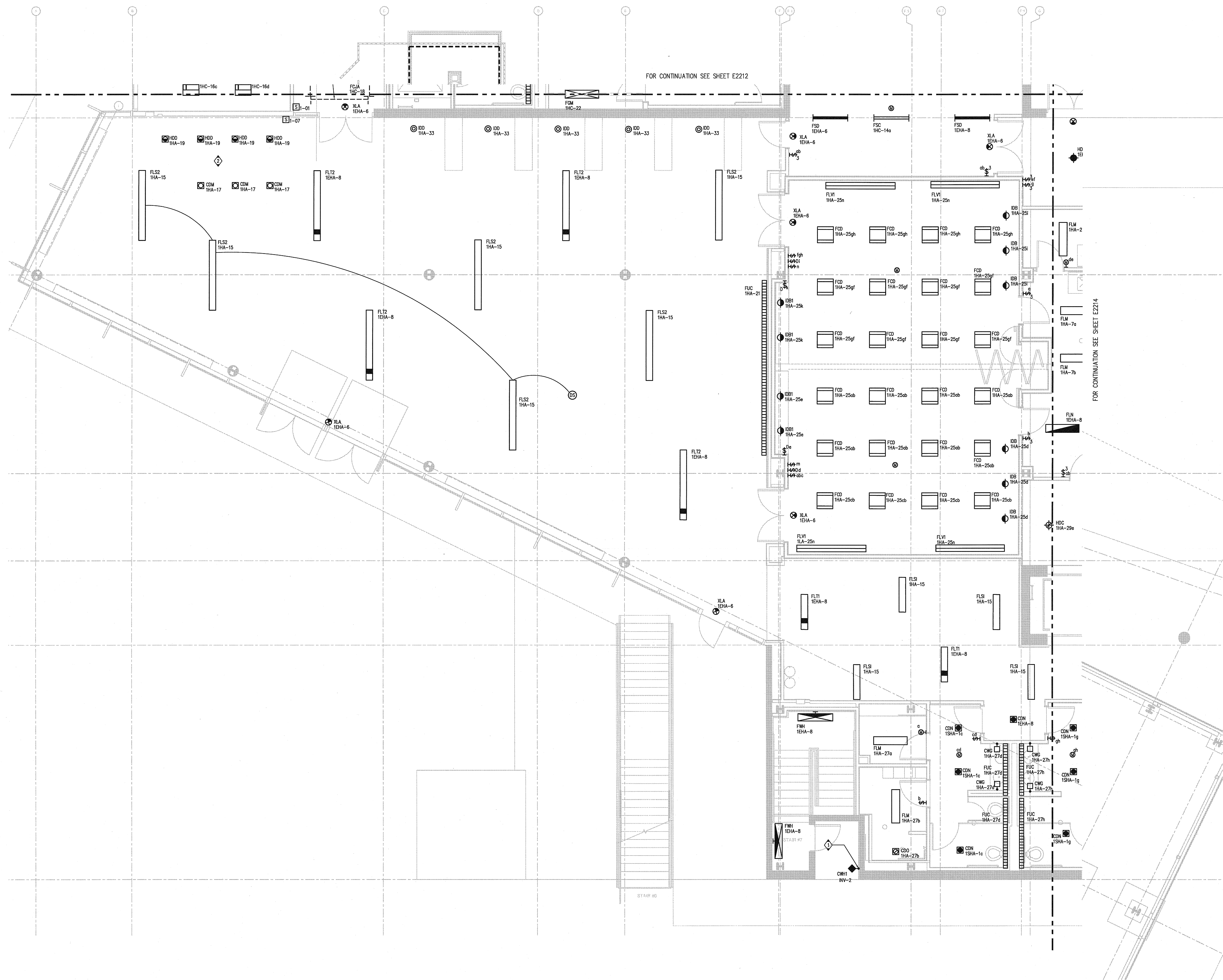
LandGroup/Philips Consortium LLC
 600 West Broadway, Suite 400, San Diego, CA 92101
 (619) 594-2200

FENTRESS ARCHITECTS
 475 Broadway, Suite 200, San Diego, CA 92101
DAVIS DAVIS ARCHITECTS
 300 West Broadway, Suite 200, San Diego, CA 92101



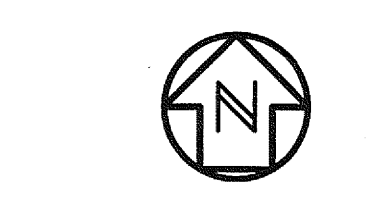
SHEET NAME: PARTIAL LIGHTING FIRST FLOOR PLAN - ZONE 3
 DRAWN BY: Author
 PROJECT #: 200725.000
 SHEET NUMBER:

E2213



APPROVED
 APR 15 2010
 DATE

U.C.S.D.
 PRELIMINARY DRAWINGS
 PROGRESS DRAWINGS
 REVIEW DRAWINGS
 CONSTRUCTION DRAWINGS



SCALE: 1/4" = 1'-0"

PARTIAL LIGHTING FIRST FLOOR PLAN - ZONE 3

1/23/2008 4:52:10 PM
 File Path:

Warning: It is a violation of the law for any person, unless acting under the direction of a licensed architect, to alter an item in any way. If an item in this document is altered, the altering architect, if other than the architect of record, shall affix the item his seal and the notation "altered by" followed by his signature and the date of such alteration, and the specific description of the alteration.