

ISSUED FOR DATE	
BD PK #1 80% CD	12.01.08
BD PK #1 100 CD	02.16.09
BD PK #2 100 CD	03.26.09
100% CD	05.08.09
AS CROSS	04.15.10
ASB 28	01.21.11

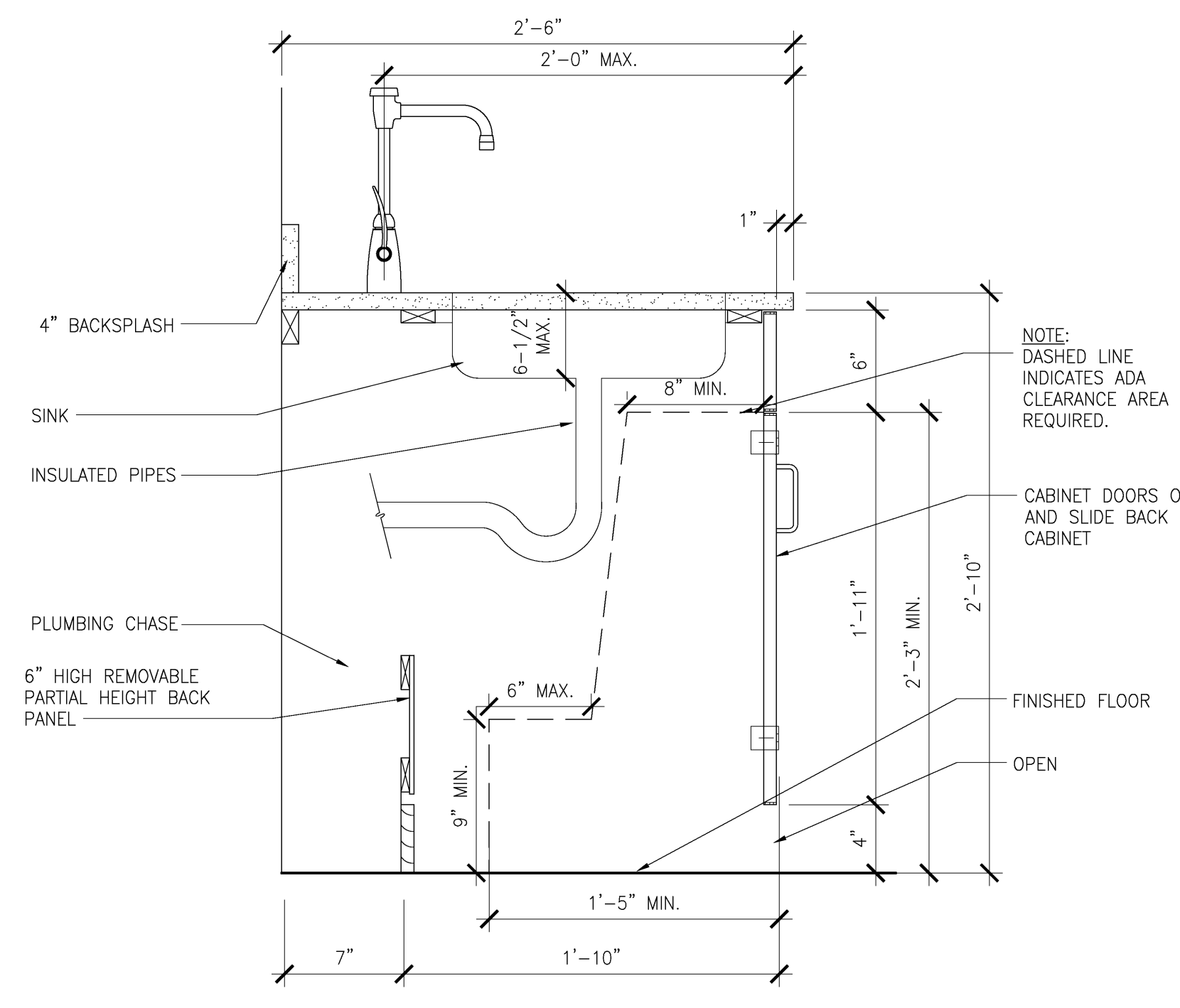
**SANFORD CONSORTIUM FOR REGENERATIVE MEDICINE**  
 2880 TORREY PINES SCENIC DRIVE  
 LA JOLLA, CALIFORNIA 92037

**JACOBS CONSULTANCY**  
 GENERAL CONSULTING PLANNING PRACTICE  
 10000 Wilshire Blvd., Suite 1000, Beverly Hills, CA 90210  
 310.274.2000 Fax: 310.274.2001

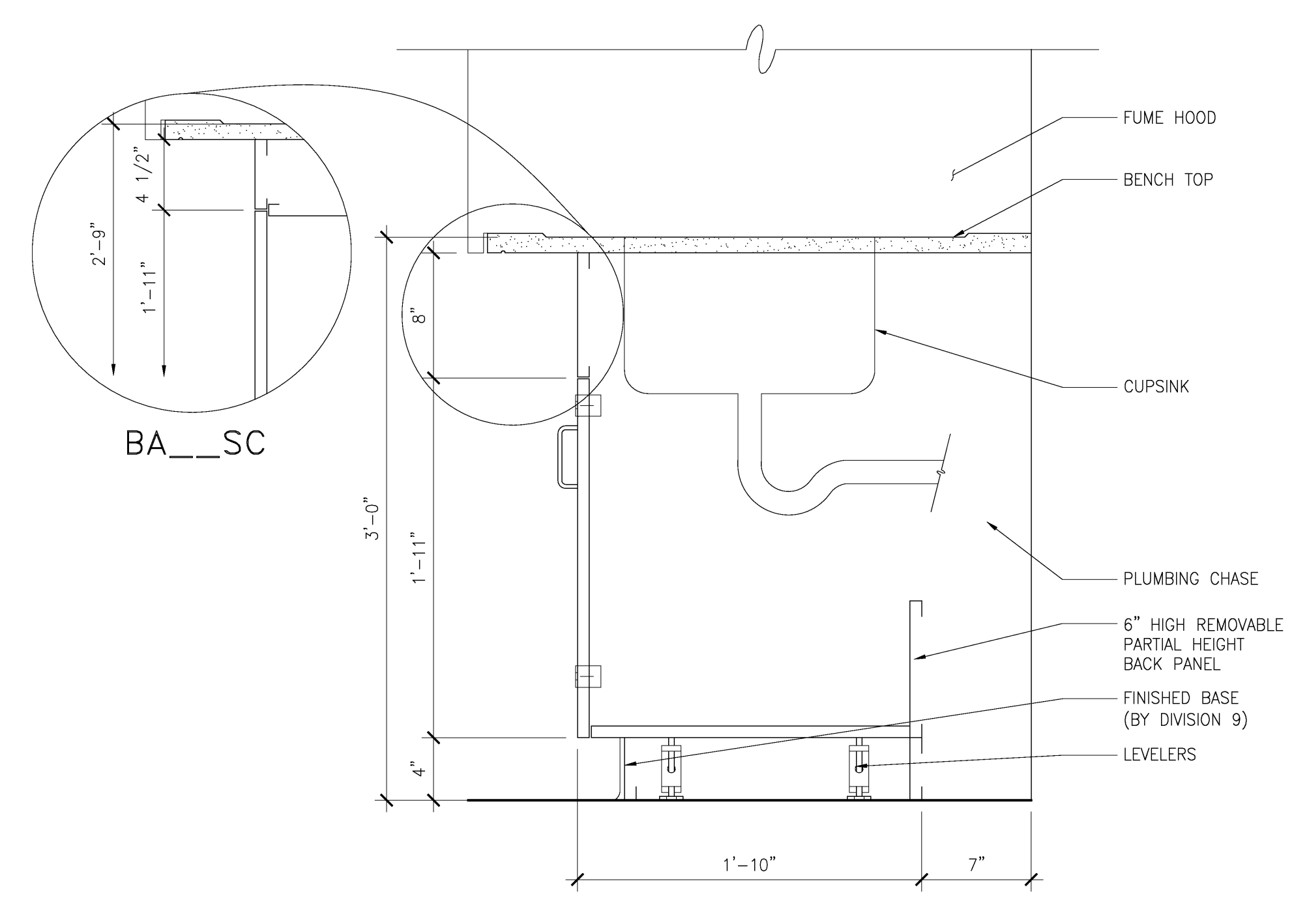
**Lankford/Phelps Consortium LLC**  
 655 West 20th Street  
 San Diego, CA 92101  
 619.594.2222

**FENTRESS ARCHITECTS**  
 415 Broadway, Denver, CO 80202  
 303.733.0000  
**DAVIS DAVIS ARCHITECTS**  
 1400 Fifth Avenue, San Diego, CA 92103

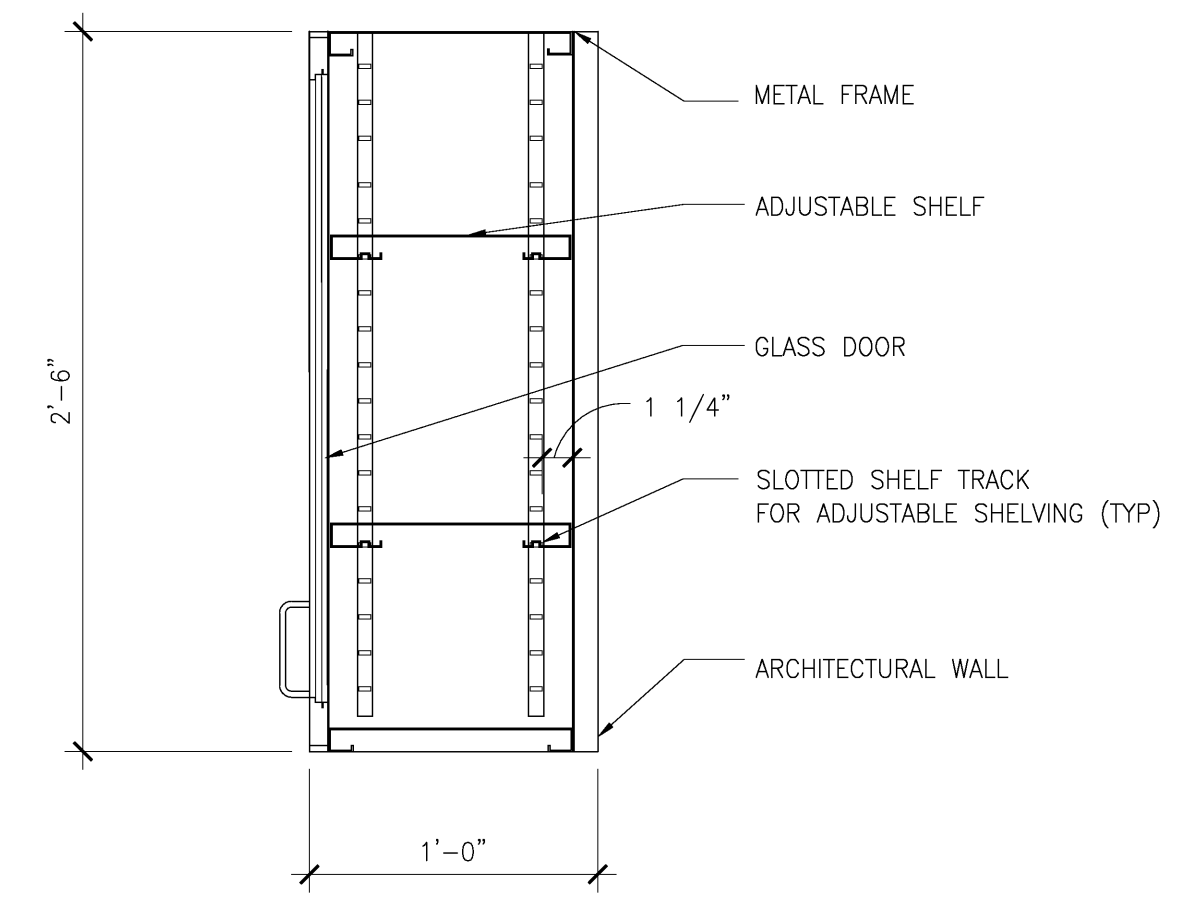
SHEET NAME  
 CASEWORK SECTIONS  
 LAB FURNISHINGS  
 DRAWN BY: JD  
 PROJECT #: 200725.000  
 SHEET NUMBER  
**A8402**



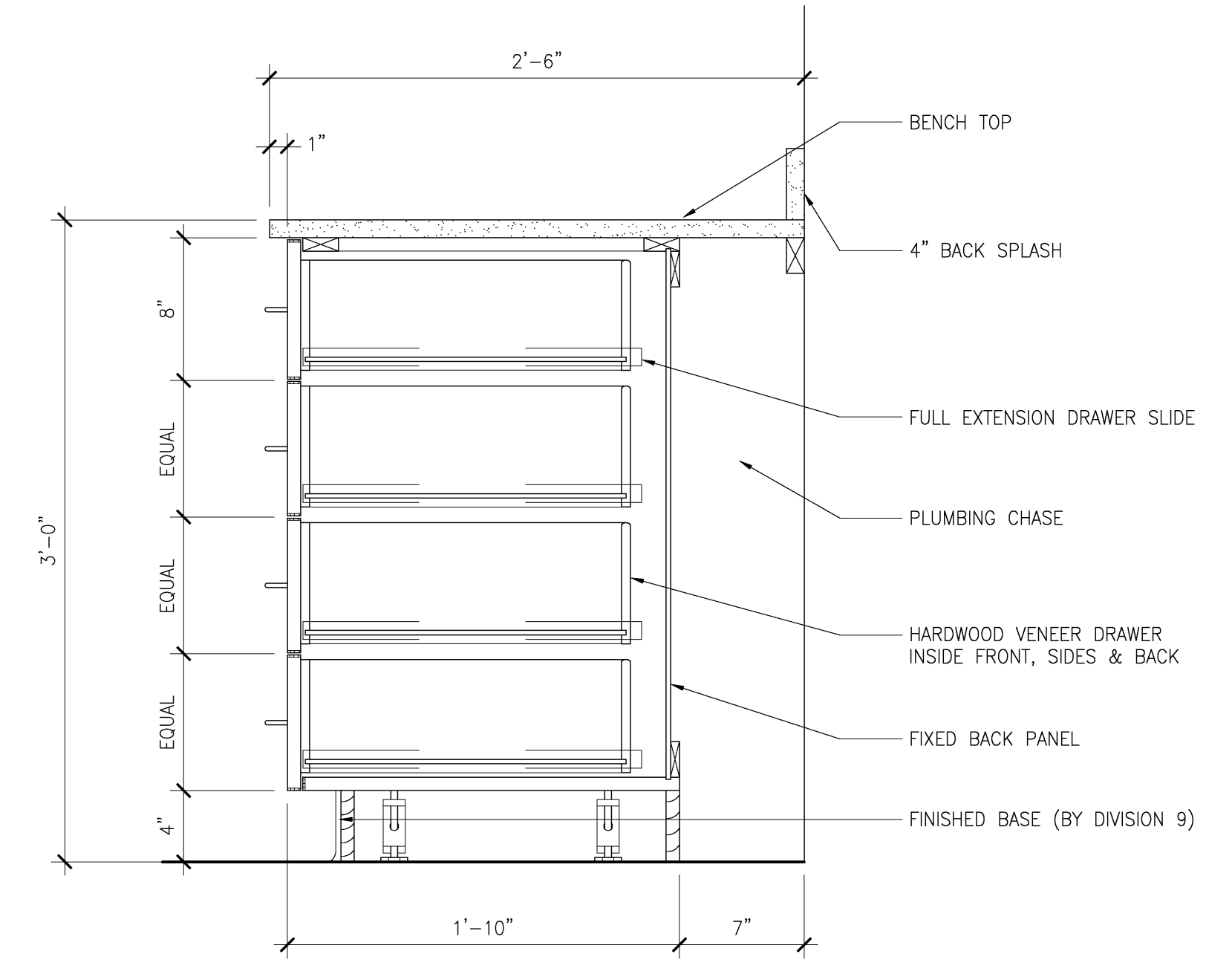
**8 WOOD SECTION - BA\_\_S**  
A8402 SCALE: 1-1/2"=1'-0"



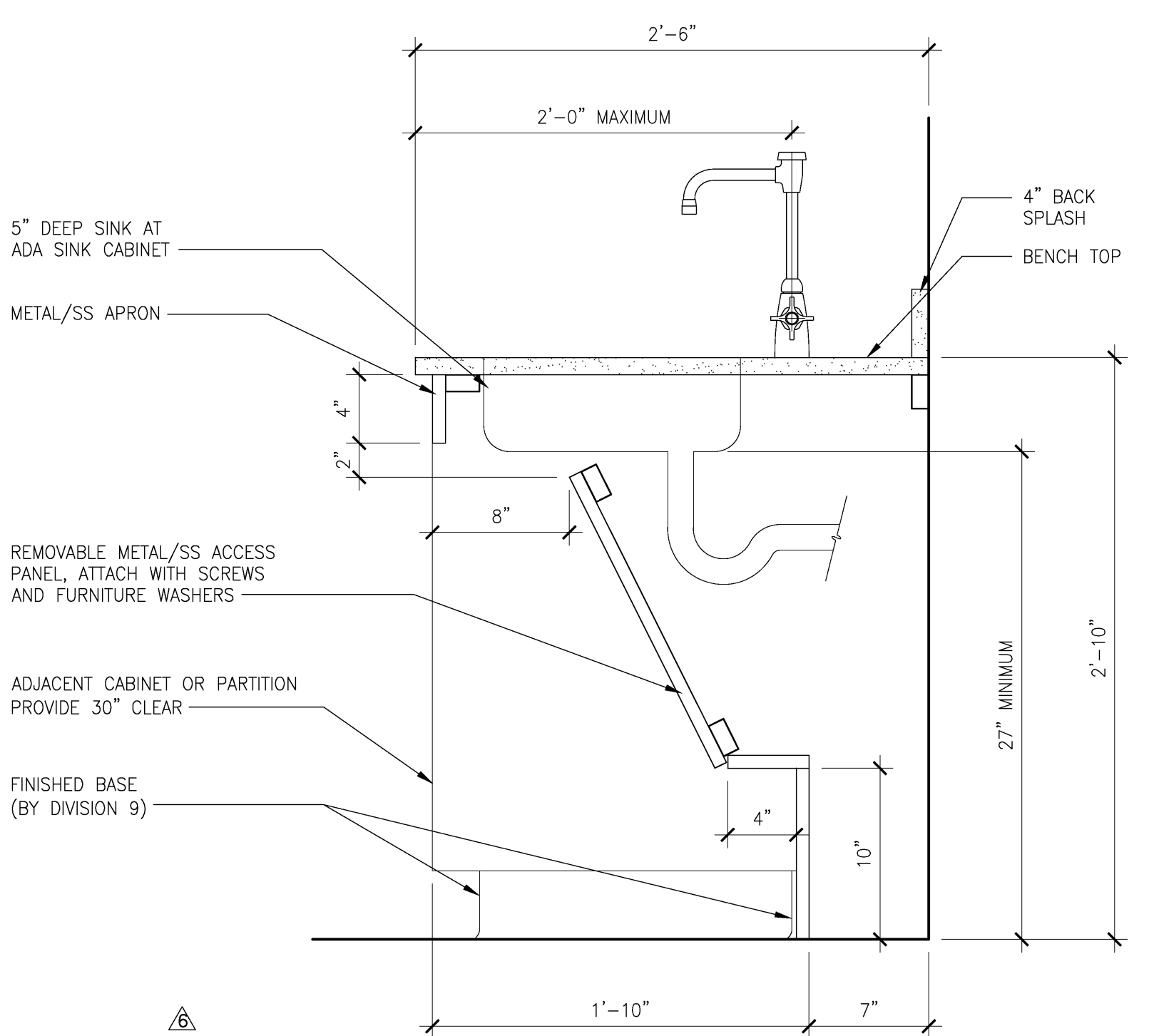
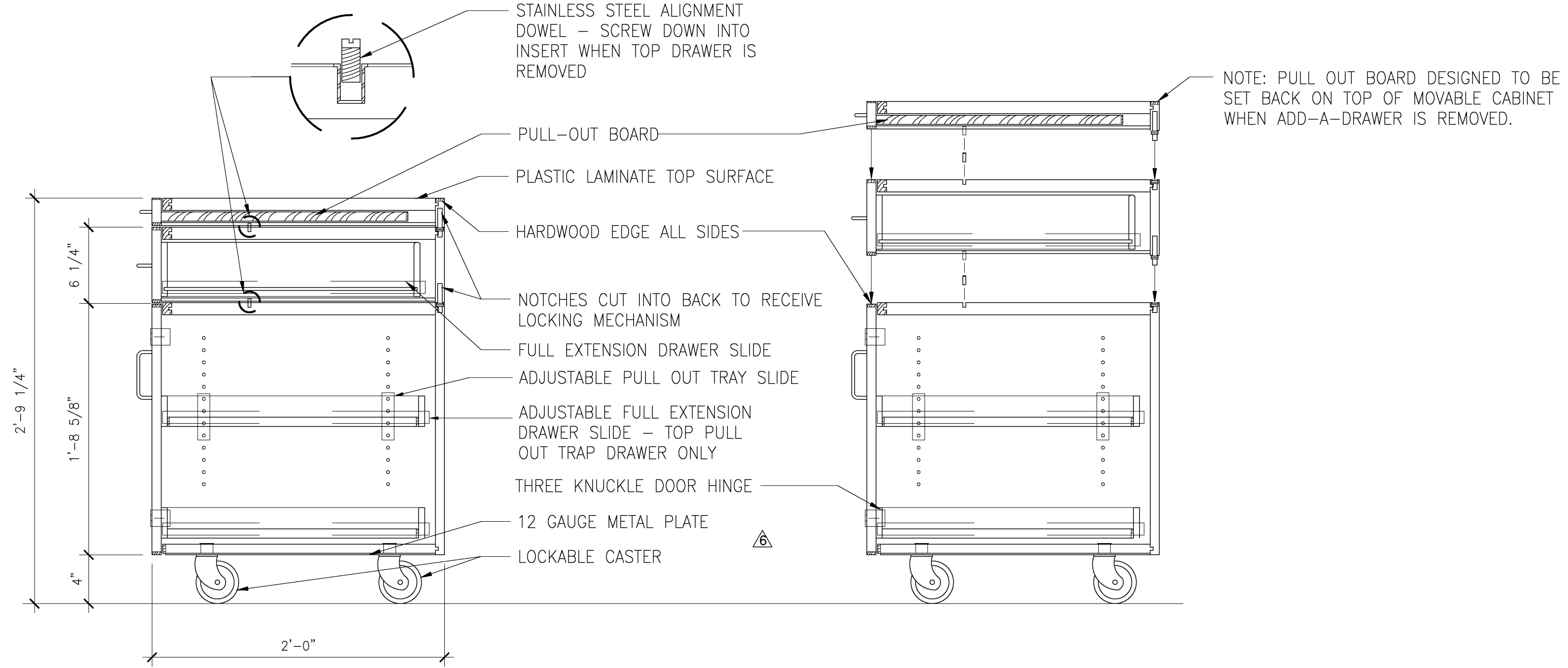
**7 METAL SECTION - B\_\_SC**  
A8402 SCALE: 1-1/2"=1'-0"



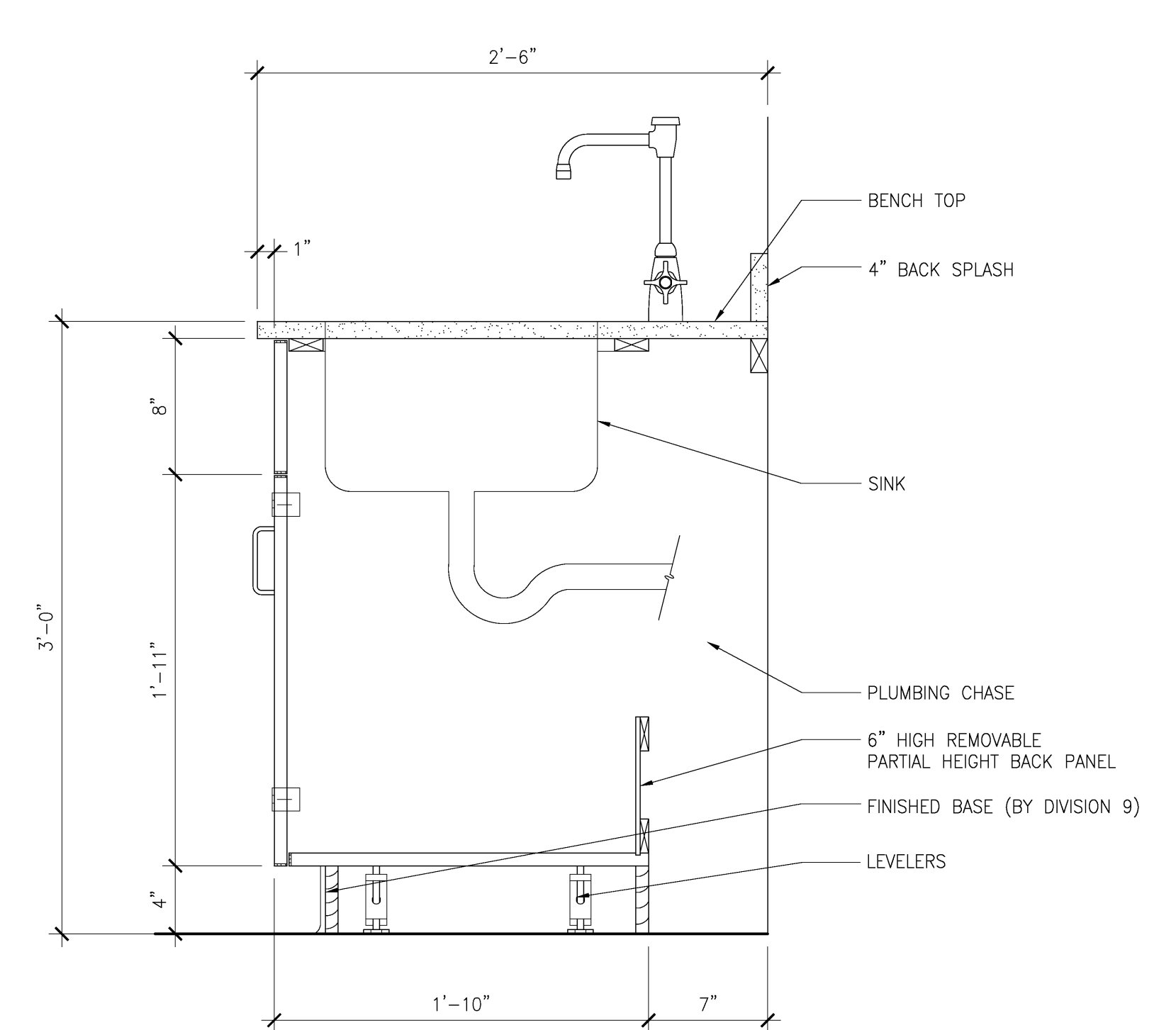
**4 METAL SECTION - W\_\_A**  
A8402 SCALE: 1-1/2"=1'-0"



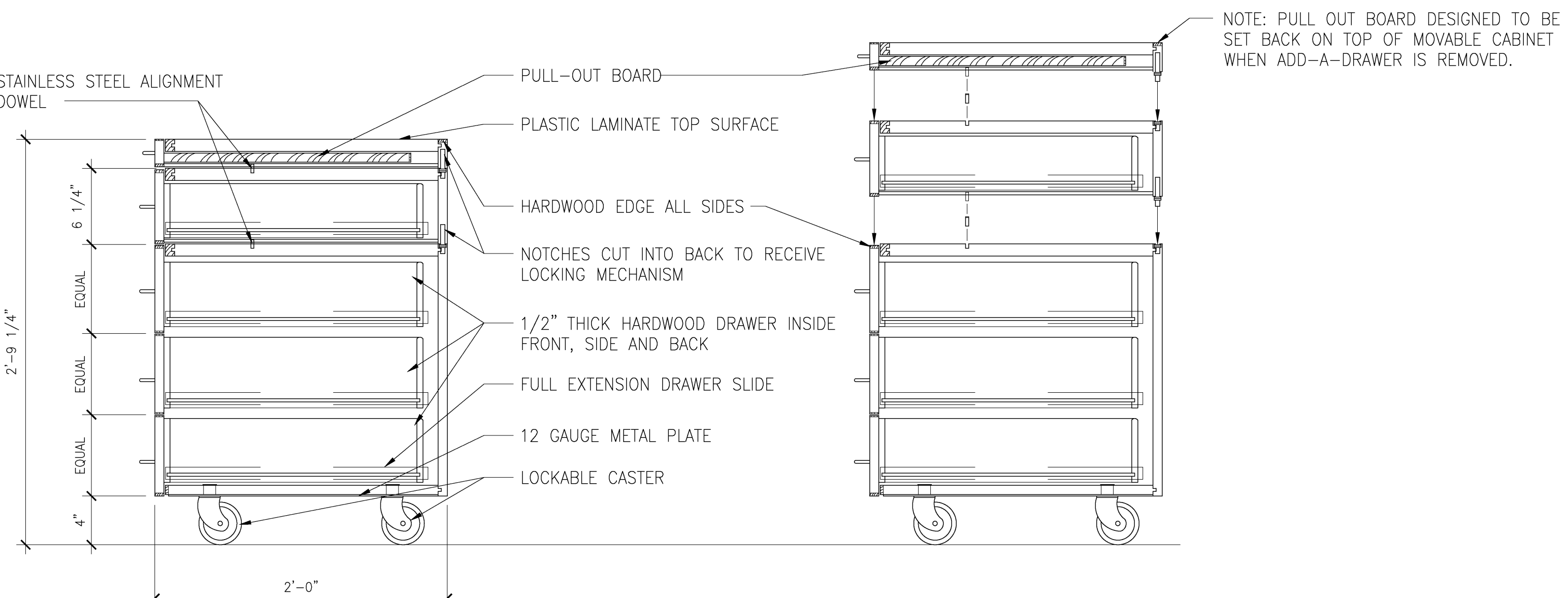
**1 WOOD SECTION - B\_\_B**  
A8402 SCALE: 1-1/2"=1'-0"



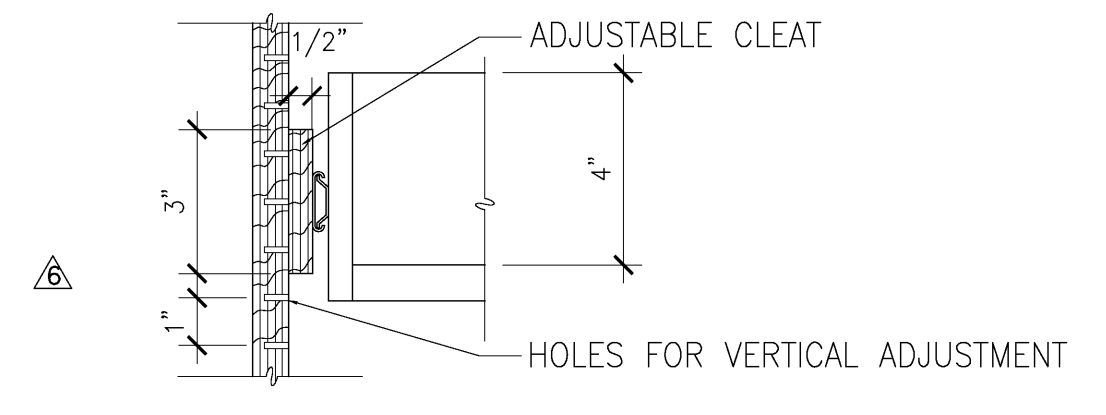
**5 METAL/SS SECTION - BA\_\_S**  
A8402 SCALE: 1-1/2"=1'-0"



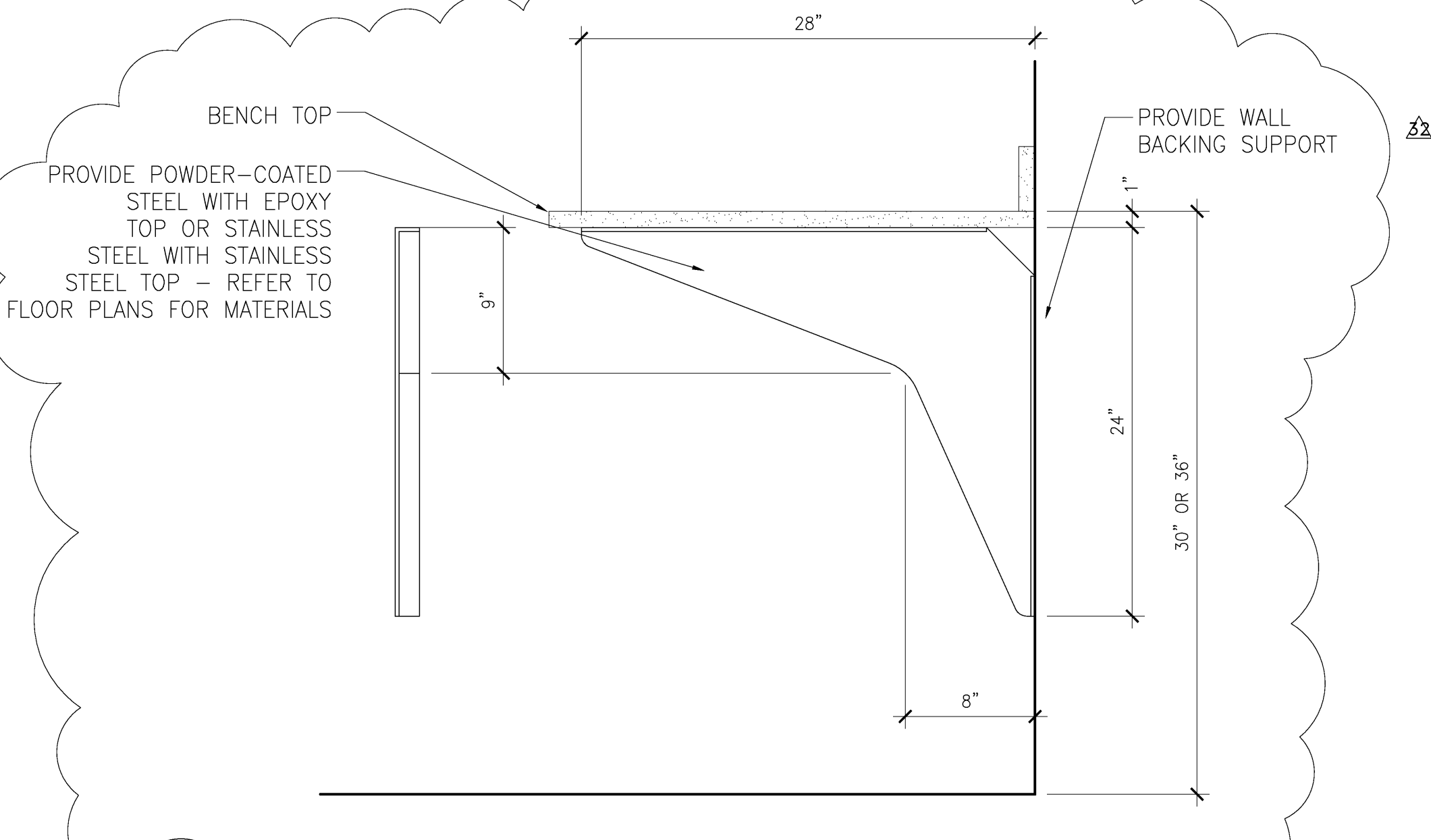
**2 WOOD SECTION - B\_\_S**  
A8402 SCALE: 1-1/2"=1'-0"



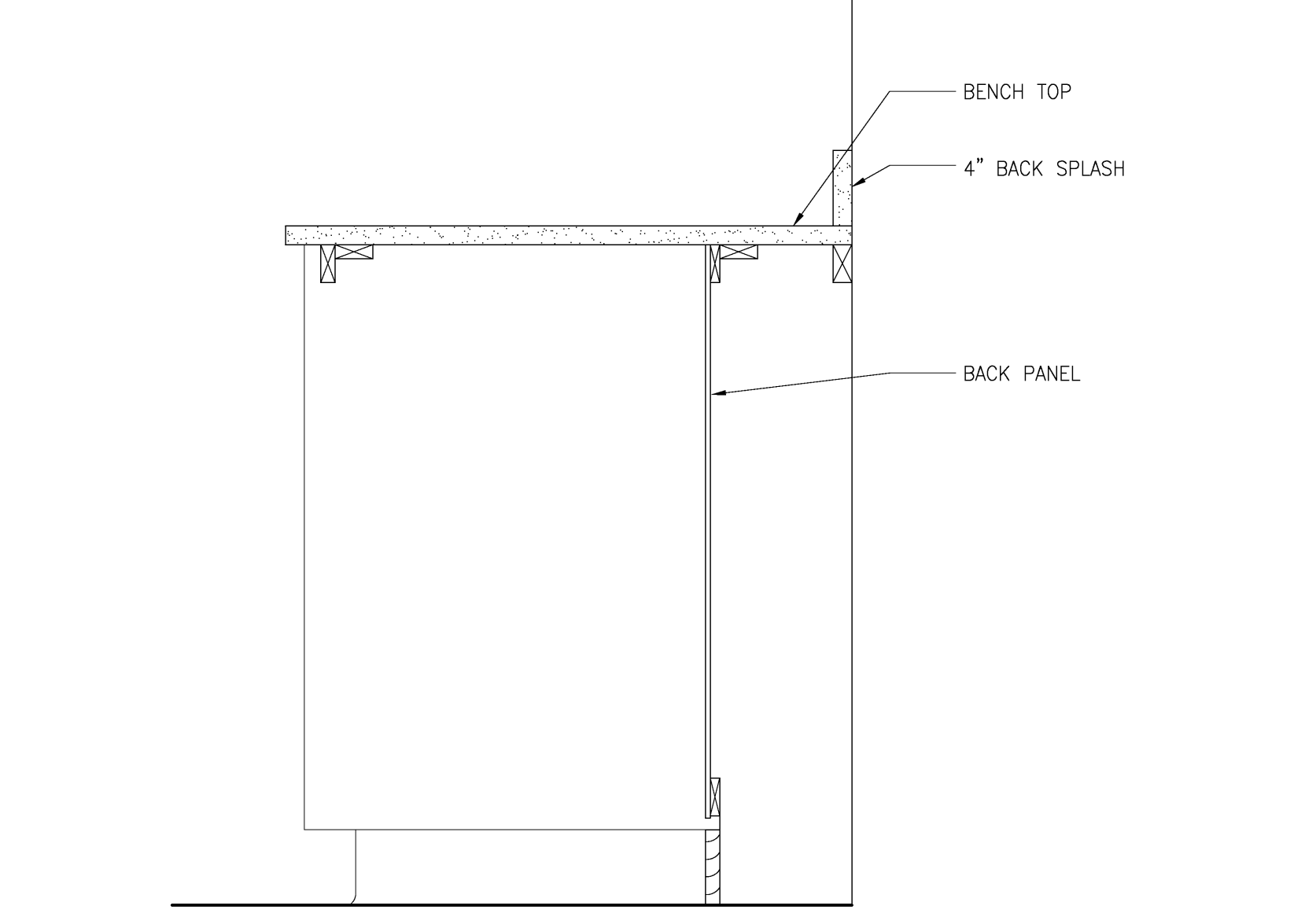
**9 WOOD SECTION - MB\_\_A**  
A8402 SCALE: 1-1/2"=1'-0"



**6 ADJUSTABLE DRAWER SLIDE**  
A8402 SCALE: 3"=1'-0"



**10 BENCH TOP SUPPORT BRACKET**  
A8402 SCALE: 1-1/2"=1'-0"



**3 WOOD SECTION - KS\_\_**  
A8402 SCALE: 1-1/2"=1'-0"

11/14/2008 1:38:52 PM

Warning: It is a violation of the law for any person, unless acting under the direction of a licensed architect, to alter an item in any way. If an item in this document is altered, the altering architect, if other than the architect of record, shall affix to the item his seal and the notation "altered by" followed by his signature and the date of such alteration, and the specific description of the alteration.