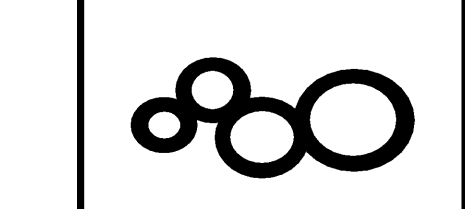


ISSUED FOR	DATE
BID PK #1 100 CD	02.18.09
BID PK #2 100 CD	03.28.09
100% CD	05.08.09
ADA REVIEW	06.26.09
CD-1	04.15.10
ASH-18	11.17.10
ASH-18-R1	02.16.11
ASH-18-R2	03.16.11

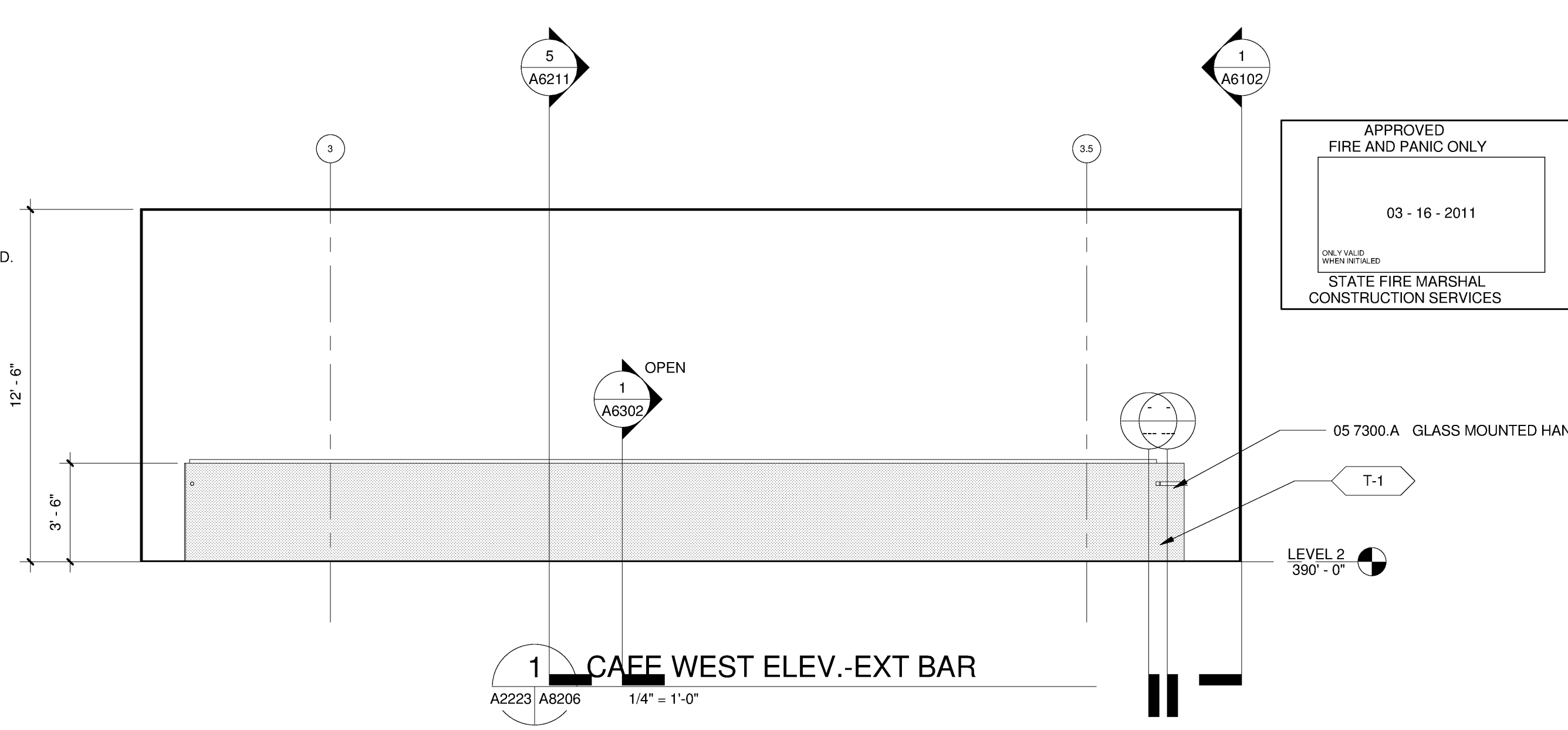
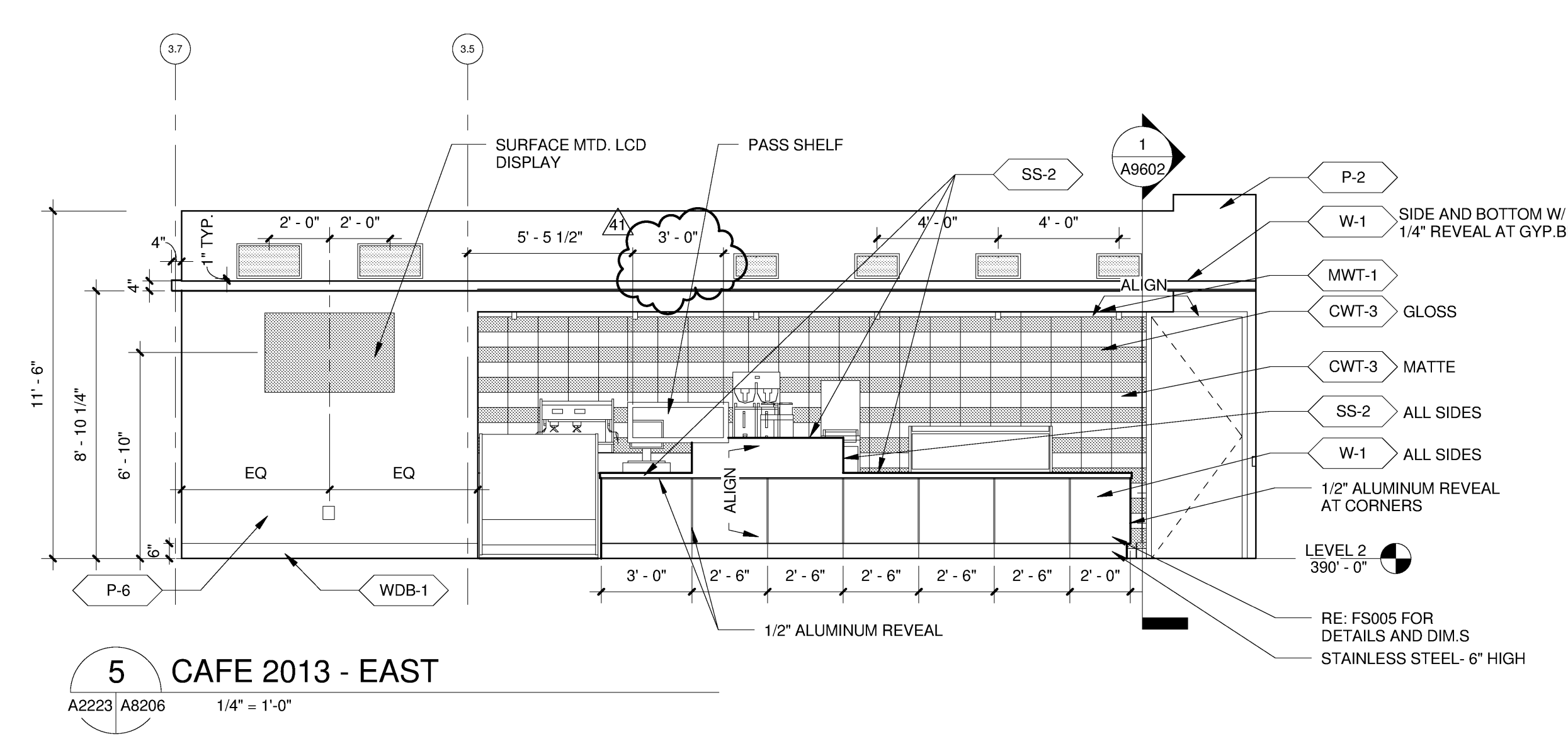
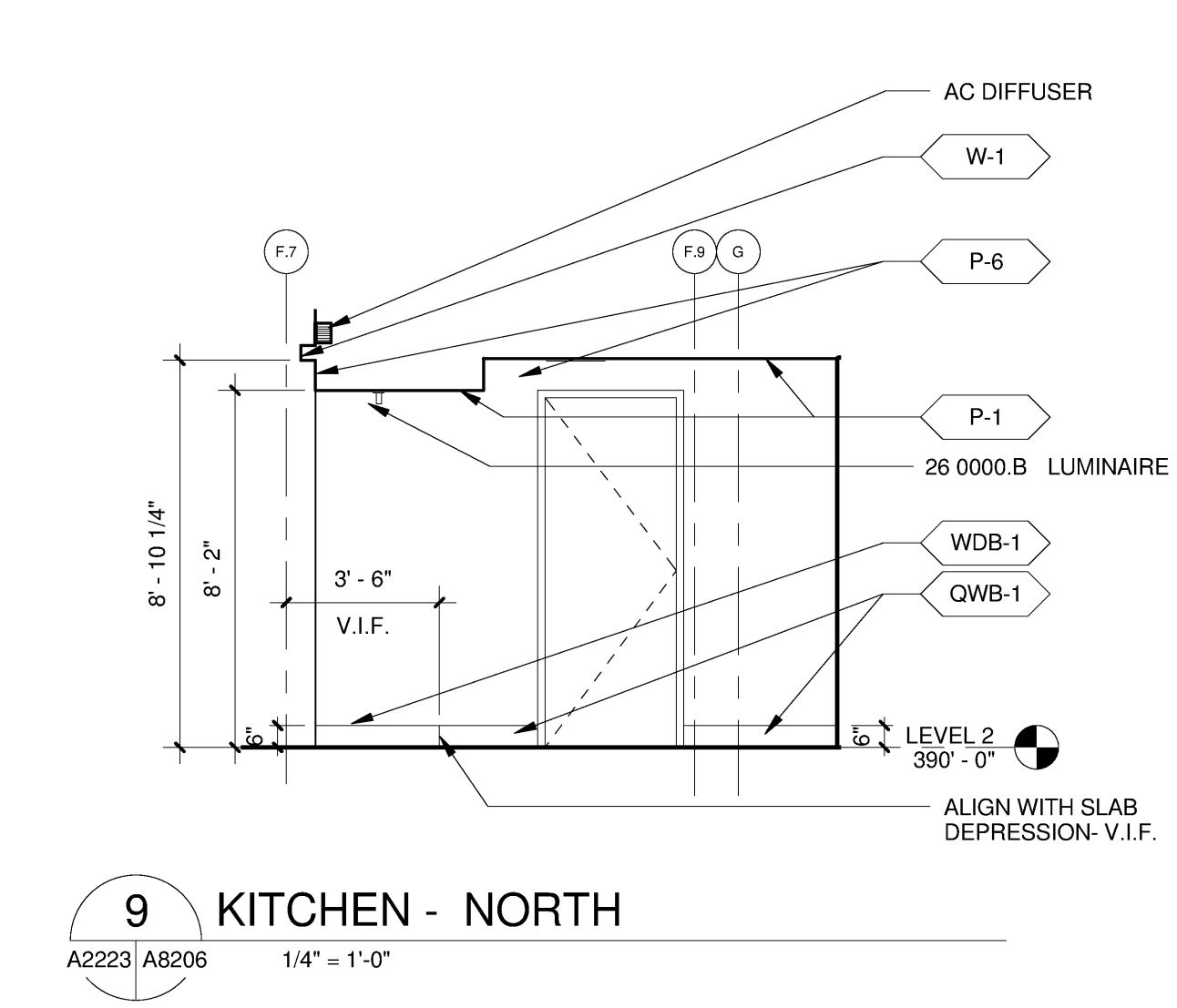
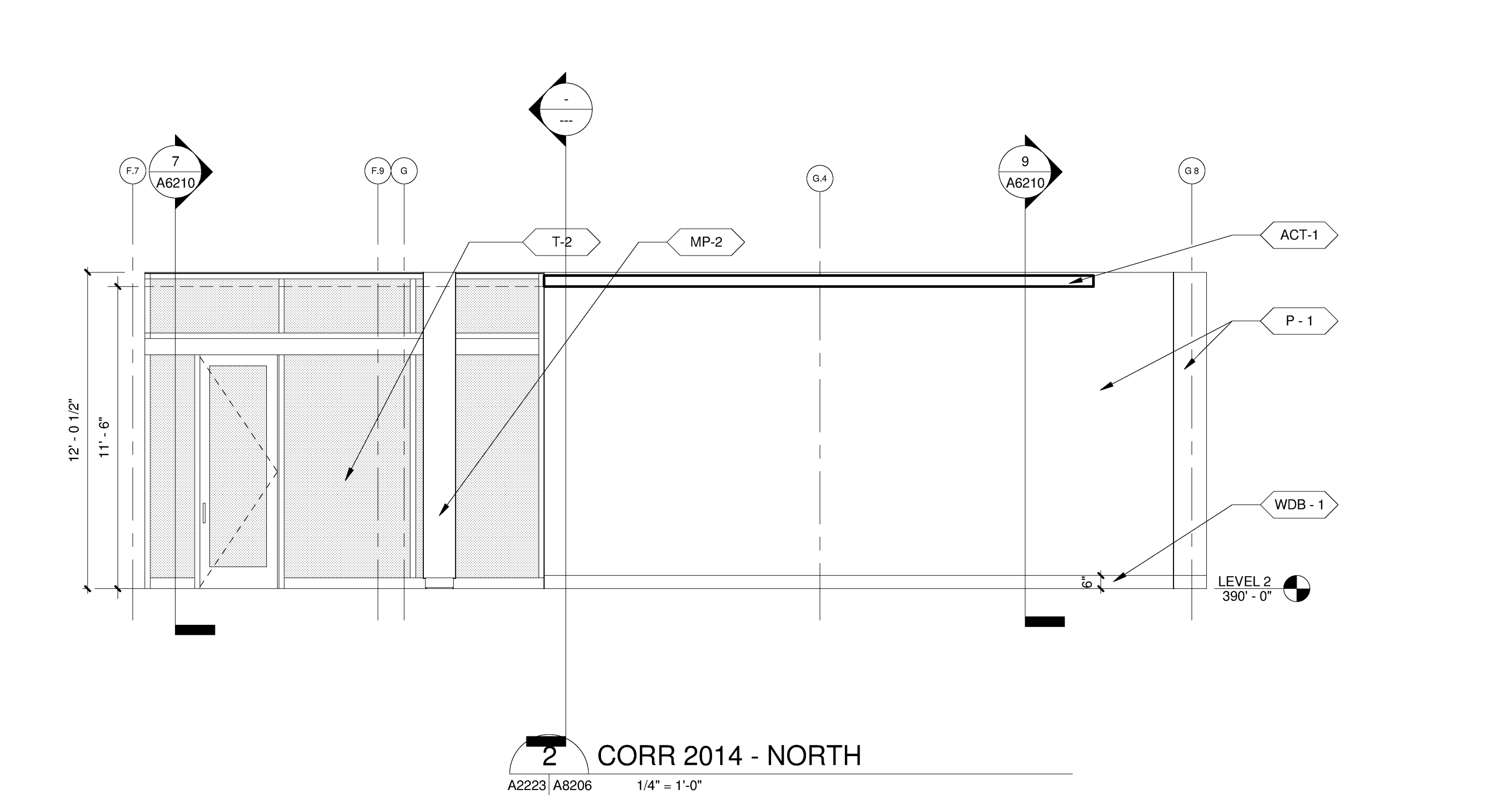
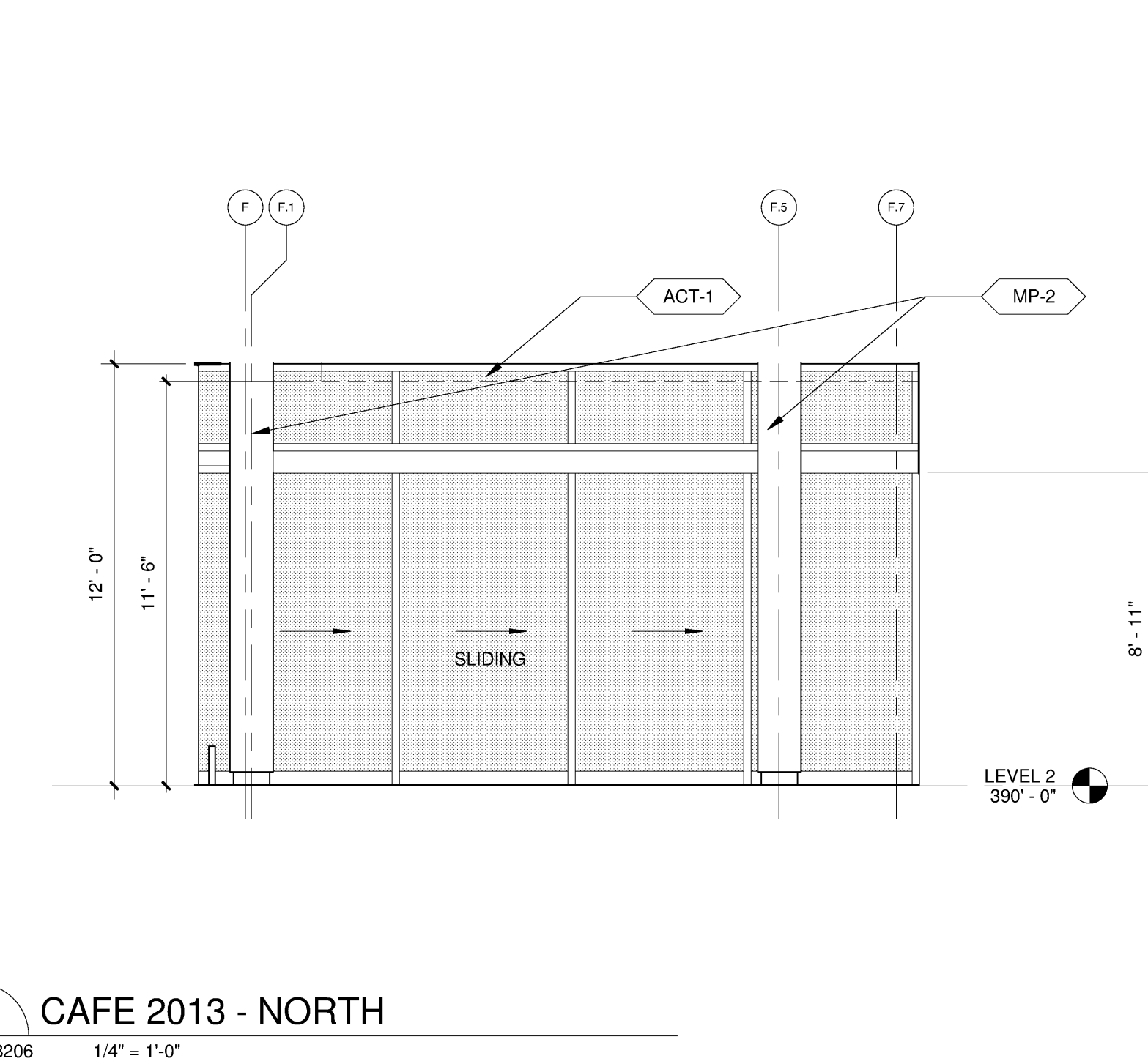
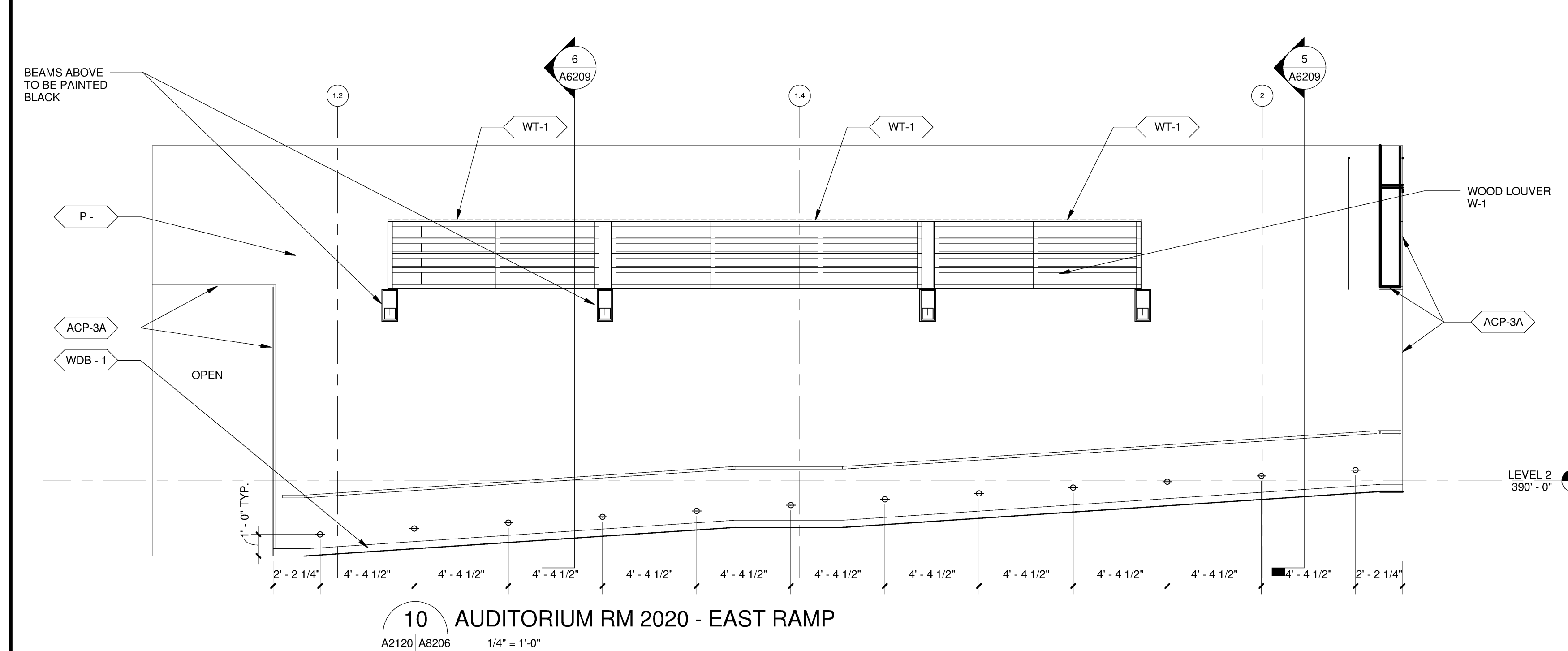
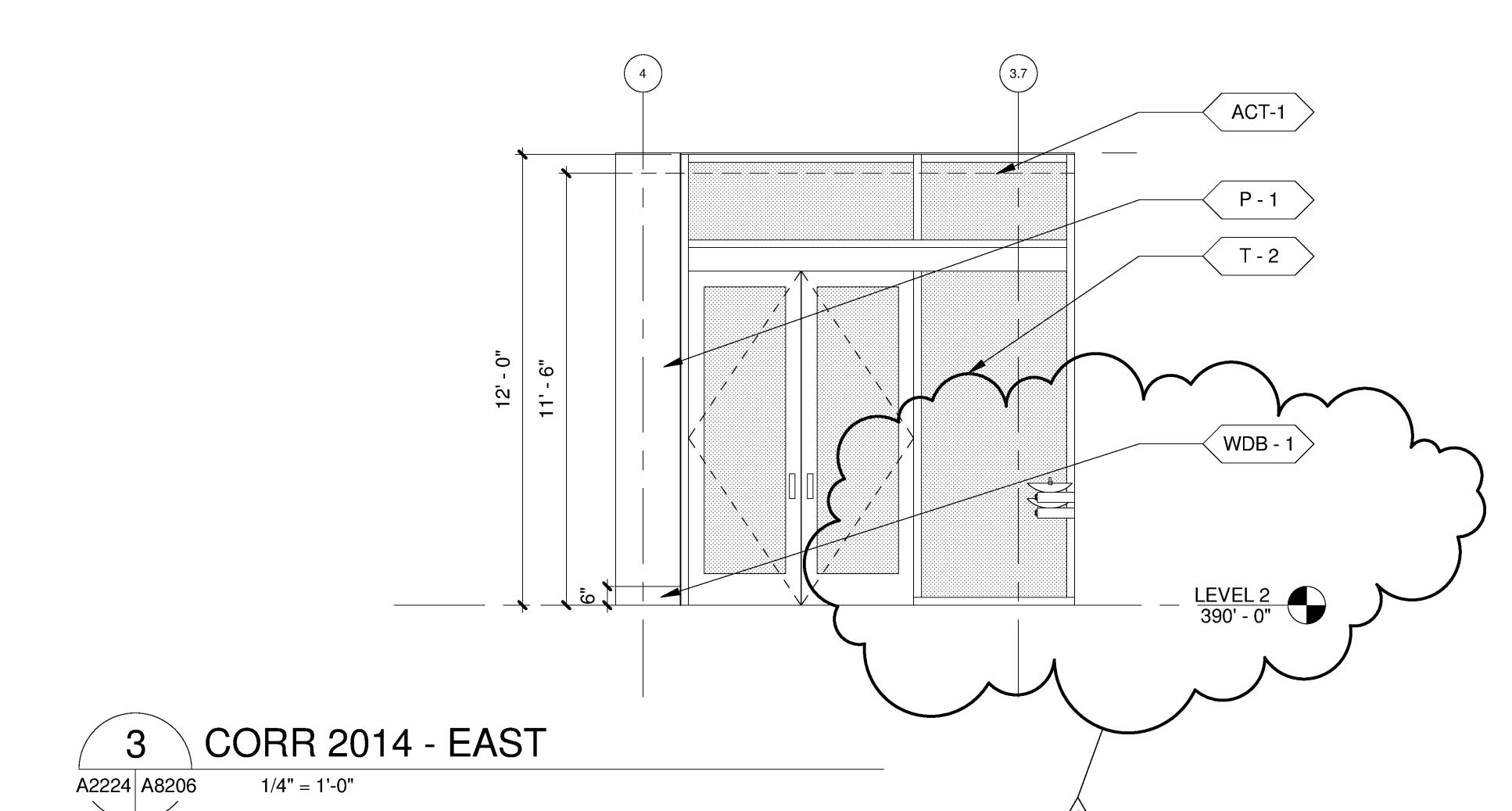
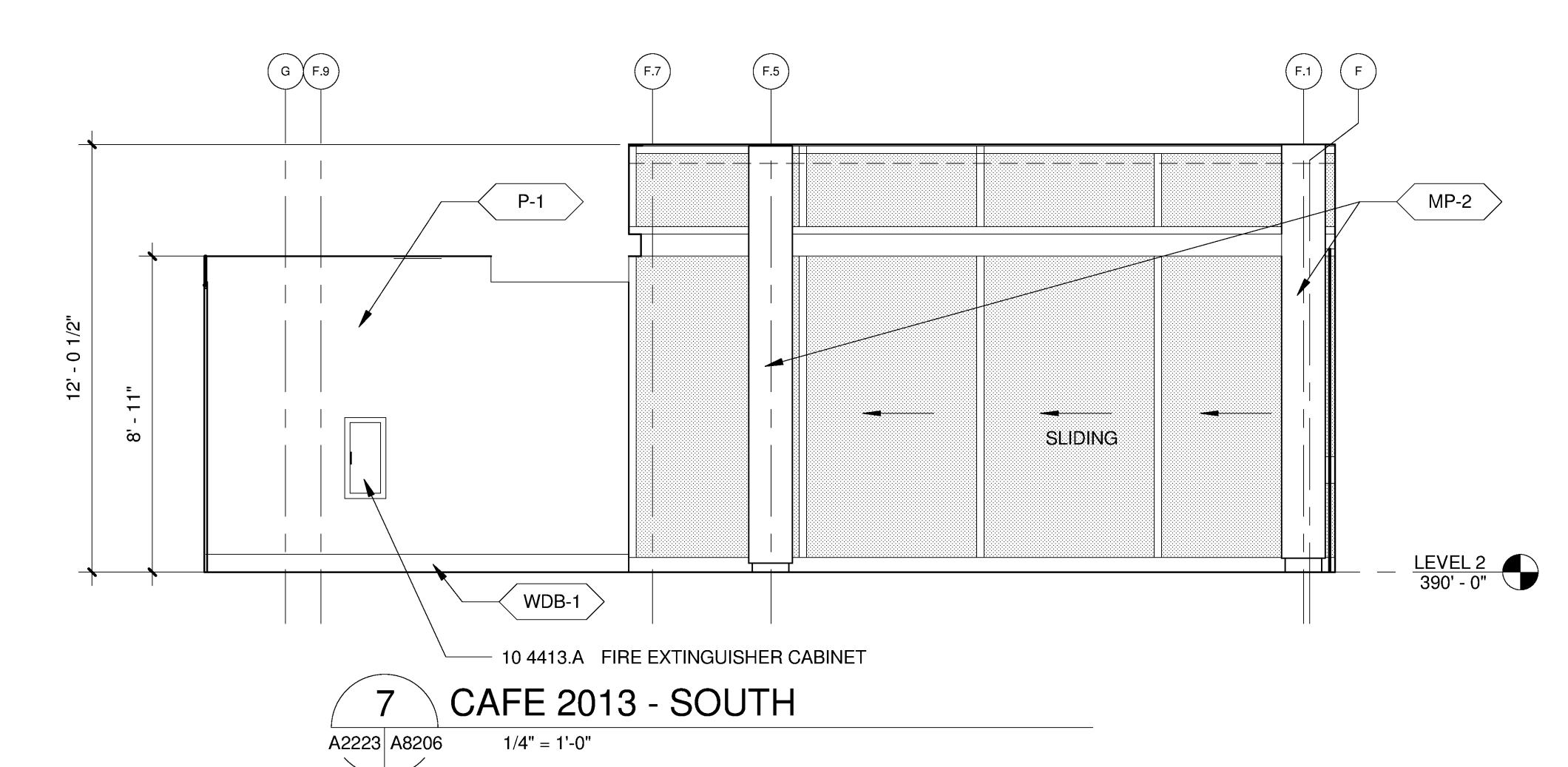
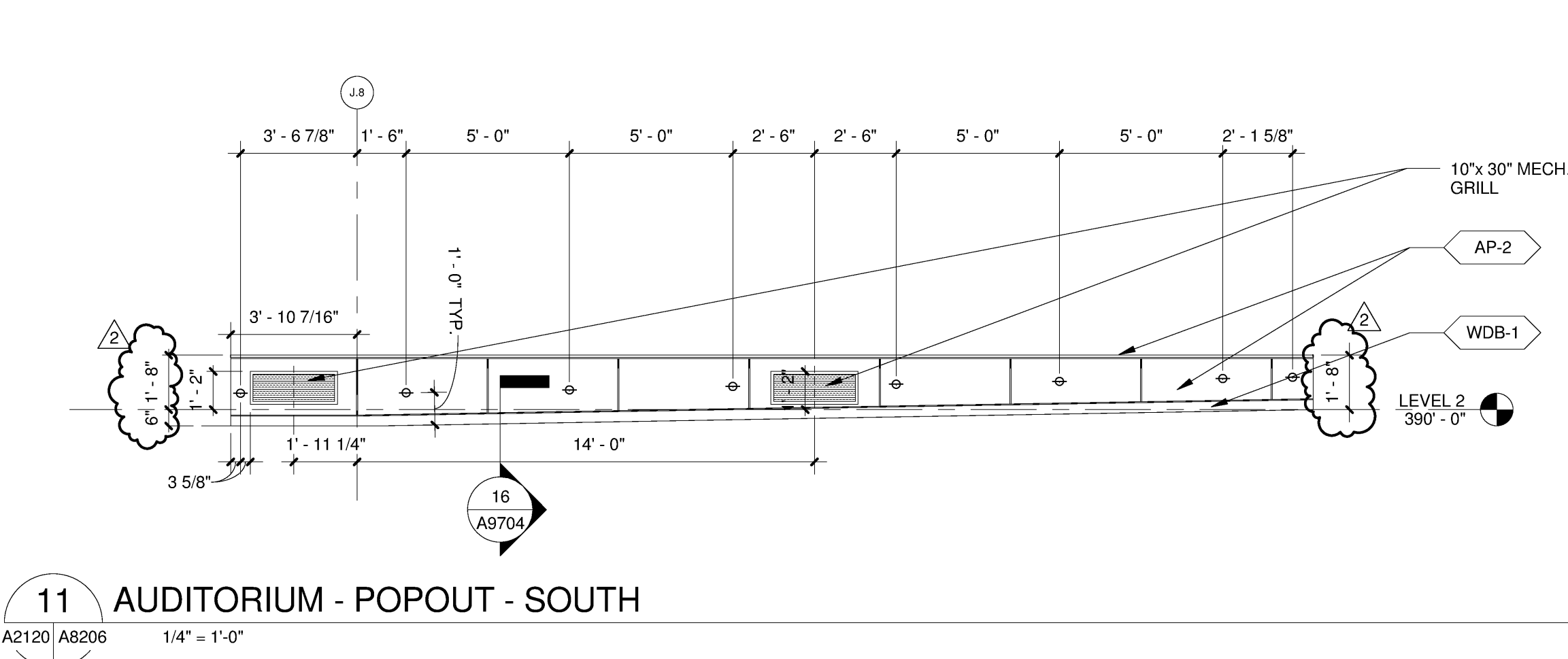
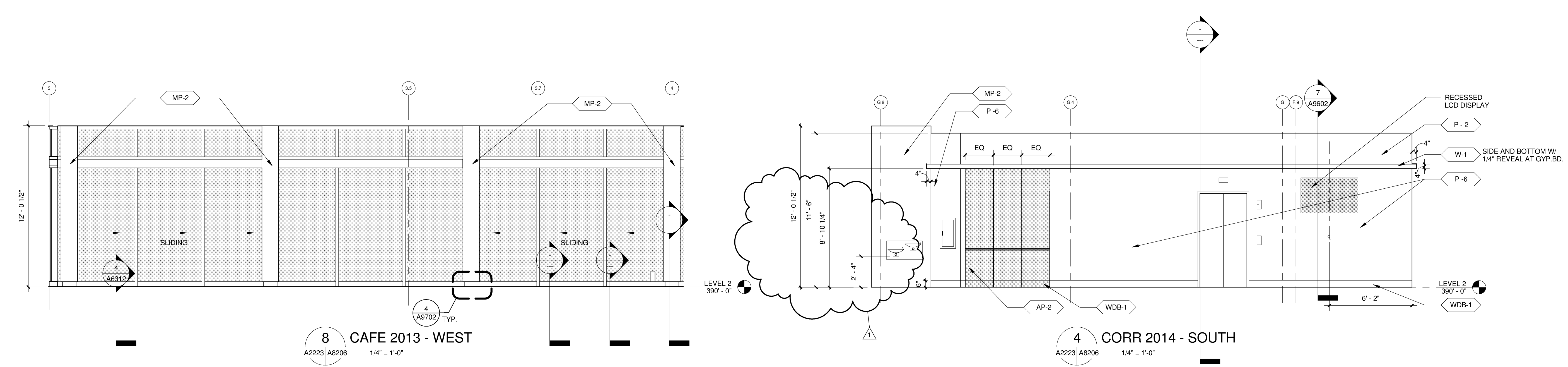
SANFORD CONSORTIUM FOR REGENERATIVE MEDICINE
 2880 TORREY PINES SCENIC DRIVE
 LA JOLLA, CALIFORNIA 92037



CONSULTANT
 Larkford Phelps Consortium LLC
 400 West Broadway, Suite 1000, San Diego, CA 92101
 619.594.8800

FENTRESS ARCHITECTS
 400 West Broadway, Suite 1000, San Diego, CA 92101
 619.594.8800

DAVIS
 2001 Park Avenue, San Diego, CA 92101
 619.594.8800



3/17/2011 3:18:20 PM
 C:\SRM\000225\SRM.DWG local.rvt

Warning: It is a violation of the law for any person, unless acting under the direction of a licensed architect, to alter an item in any way. If an item in this document is altered, the altering architect, if other than the architect of record, shall affix to the item his seal and the notation "altered by" followed by his signature and the date of such alteration, and the specific description of the alteration.

SHEET NAME: INTERIOR ELEVATIONS
 DRAWN BY: Author
 PROJECT #: 200725.000
 SHEET NUMBER: A8206