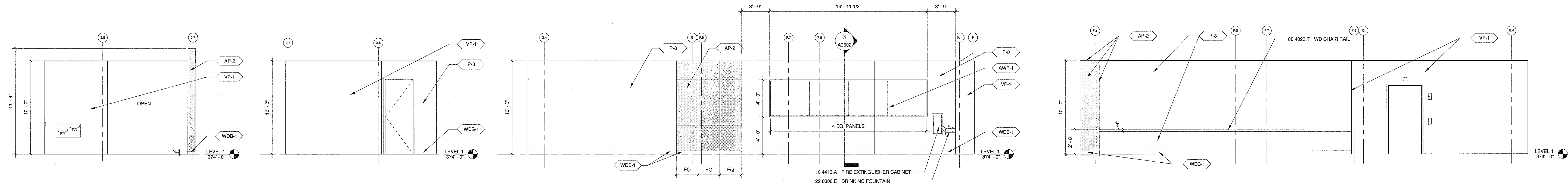
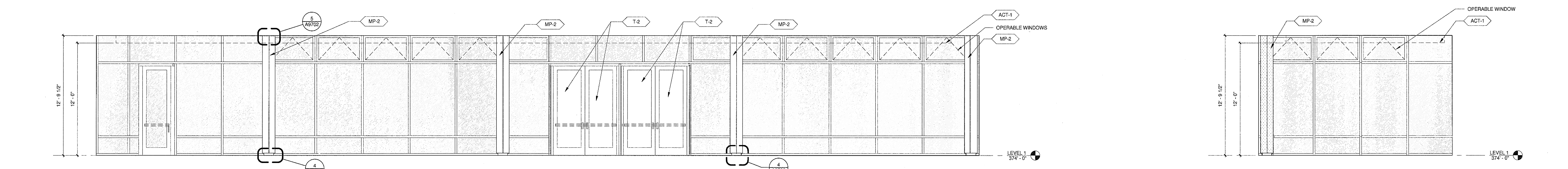


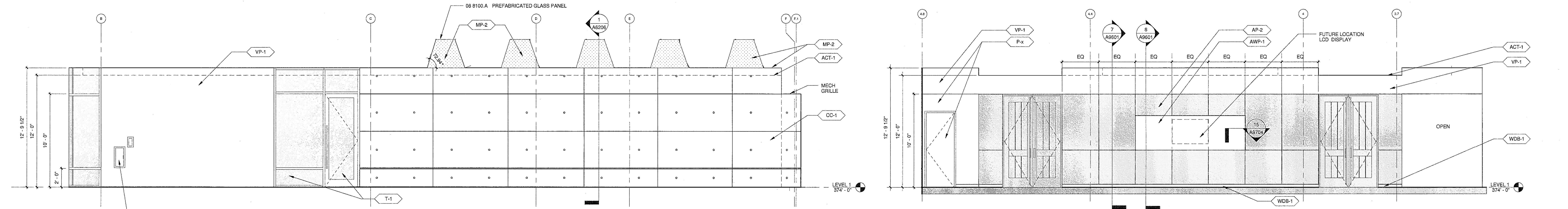
ISSUED FOR	DATE
BID PK #1 100 CD	02.18.09
BID PK #2 100 CD	03.26.09
100% CD	05.08.09
CD-4	01.07.10
CD-4	04.15.10



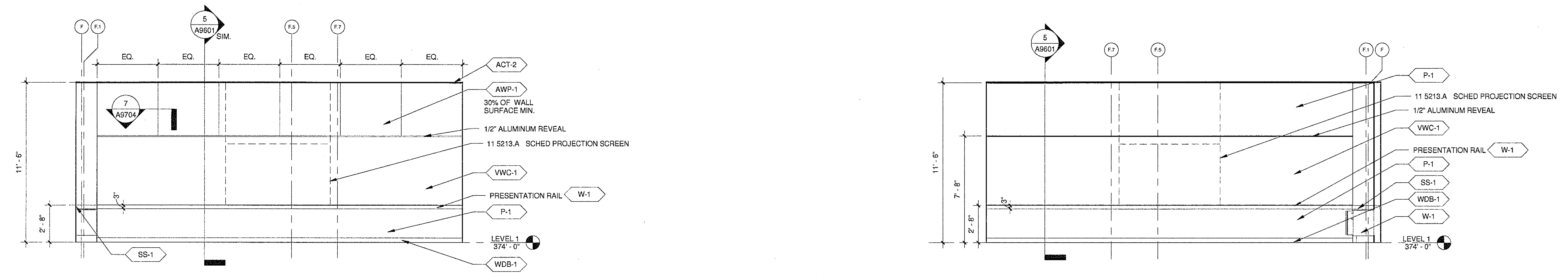
20 LEVEL 1 BREAK OUT - WEST
 15 LEVEL 1 BREAKOUT EAST
 10 LEVEL 1 BREAKOUT - SOUTH
 5 LEVEL 1 BREAKOUT - NORTH



9 LOBBY 1012 - SOUTH
 4 LOBBY 1012 - WEST

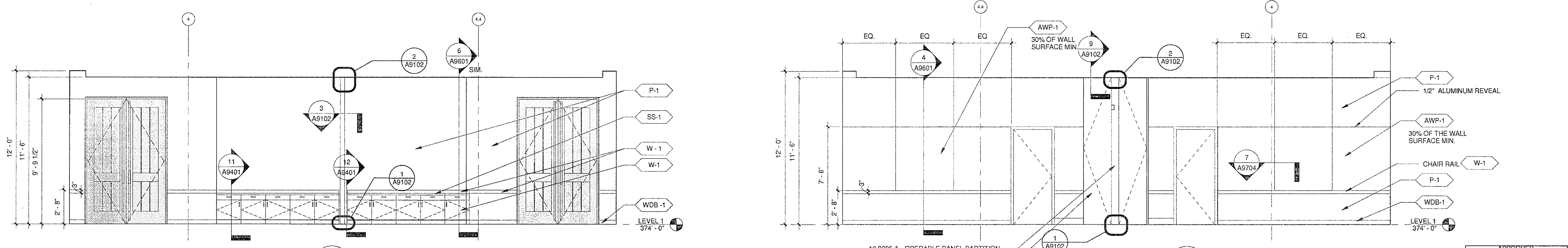


8 LOBBY 1012 - NORTH
 3 LOBBY 1012 - EAST



7 CONFERENCE 1013B - NORTH
 2 CONFERENCE 1013A - SOUTH

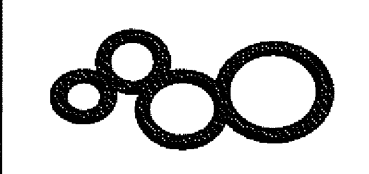
U.C.S.D.
 PRELIMINARY DRAWINGS
 PROGRESS DRAWINGS
 REVIEW DRAWINGS
 CONSTRUCTION DRAWINGS



6 CONFERENCE 1013A+B - WEST
 1 CONFERENCE 1013A+B - EAST

APPROVED
 FIRE AND SEISMIC ONLY
 04-15-2010
 STATE OF CALIFORNIA
 CONSTRUCTION SERVICES

SANFORD CONSORTIUM FOR REGENERATIVE MEDICINE
 2880 TORREY PINES SCENIC DRIVE
 LA JOLLA, CALIFORNIA 92037



CONSULTANT
 Landberg/Phillips Consortium LLC
 10000 Wilshire Blvd., Suite 1000
 Los Angeles, CA 90024

FENTRESS ARCHITECTS
 401 Broadway, Suite 200
 San Francisco, CA 94111
 DAVIS DAVIS ARCHITECTS
 2000 Broadway, Suite 200
 San Francisco, CA 94111

STAMP
 LICENSED ARCHITECT
 Jeffrey W. Olson
 No. C-37261
 Exp. 03/31/11
 STATE OF CALIFORNIA

SHEET NAME
 INTERIOR ELEVATIONS
 DRAWN BY: Author
 PROJECT #: 200725.000
 SHEET NUMBER
 A8204

4/15/2010 10:04:48 AM
 C:\A\Revit\Projects\200725_SCFM_Archi_Dr.rvt

Warning: It is a violation of the law for any person, unless acting under the direction of a licensed architect, to alter an item in any way. If an item in this document is altered, the altering architect, if other than the architect of record, shall affix the item his seal and the notation "altered by" followed by his signature and the date of such alteration, and the specific description of the alteration.