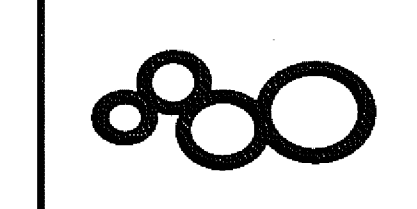


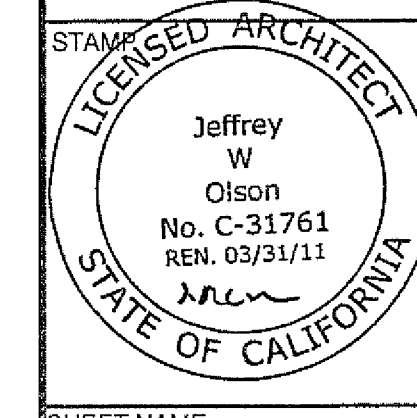
ISSUED FOR	DATE
50% PROGRESS	10.24.08
BID PK #1 100 CD	02.18.09
BID PK #2 100 CD	03.26.09
100% CD	05.08.09
ADA REVIEW	08.26.09
CD-4	01.07.10
CD-4	04.15.10

SANFORD CONSORTIUM FOR REGENERATIVE MEDICINE
 2880 TORREY PINES SCENIC DRIVE
 LA JOLLA, CALIFORNIA 92037

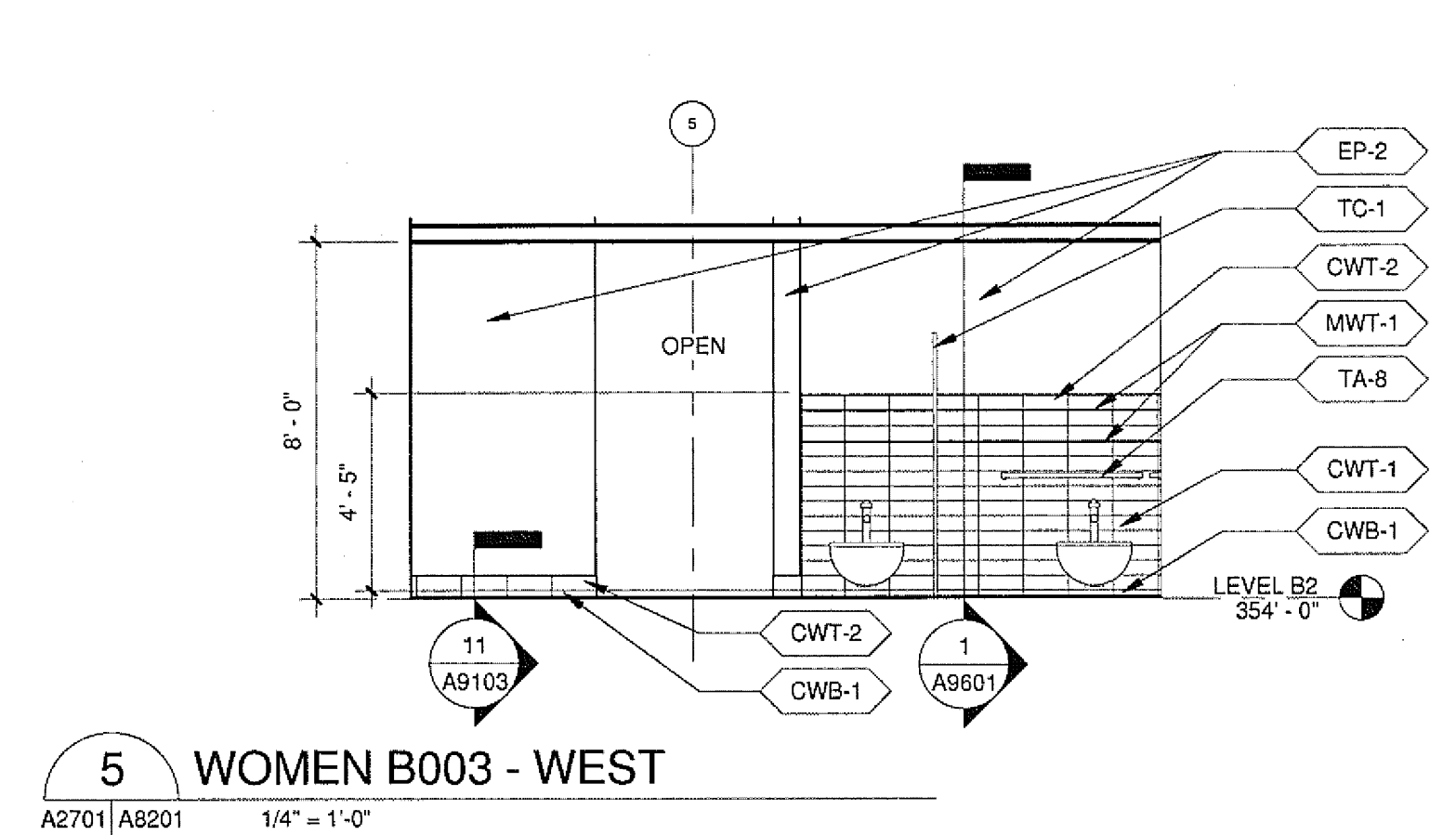


CONSULTANT
 LandfordPhibes Consortium LLC
 15500 Wilshire Blvd, Suite 1000
 Los Angeles, CA 90025

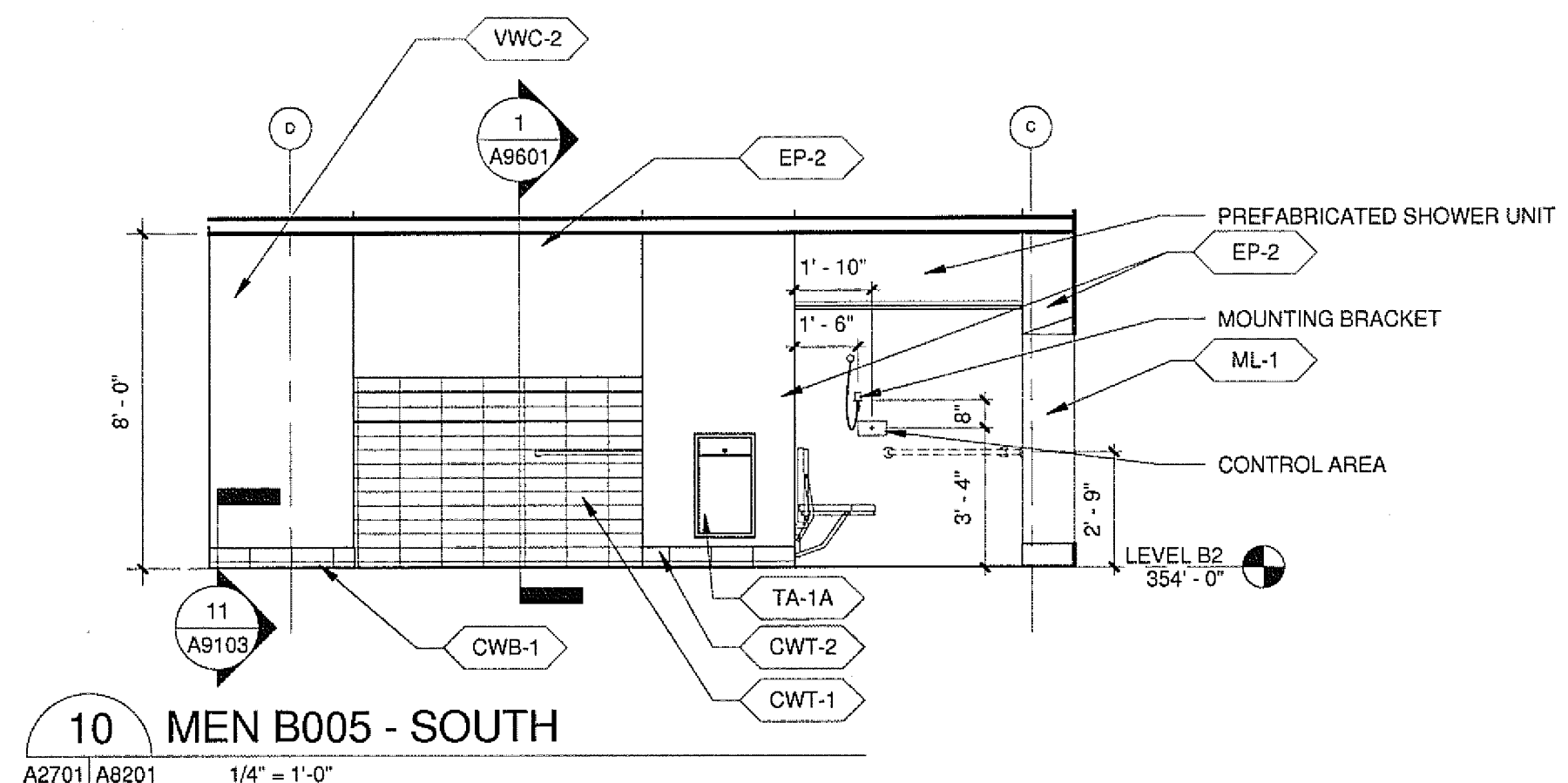
FENTRESS ARCHITECTS
 48 Wilshire Blvd, Suite 2000
 Los Angeles, CA 90024
 DAVIS DAVIS ARCHITECTS
 200 Wilshire Blvd, Suite 2000
 Los Angeles, CA 90024



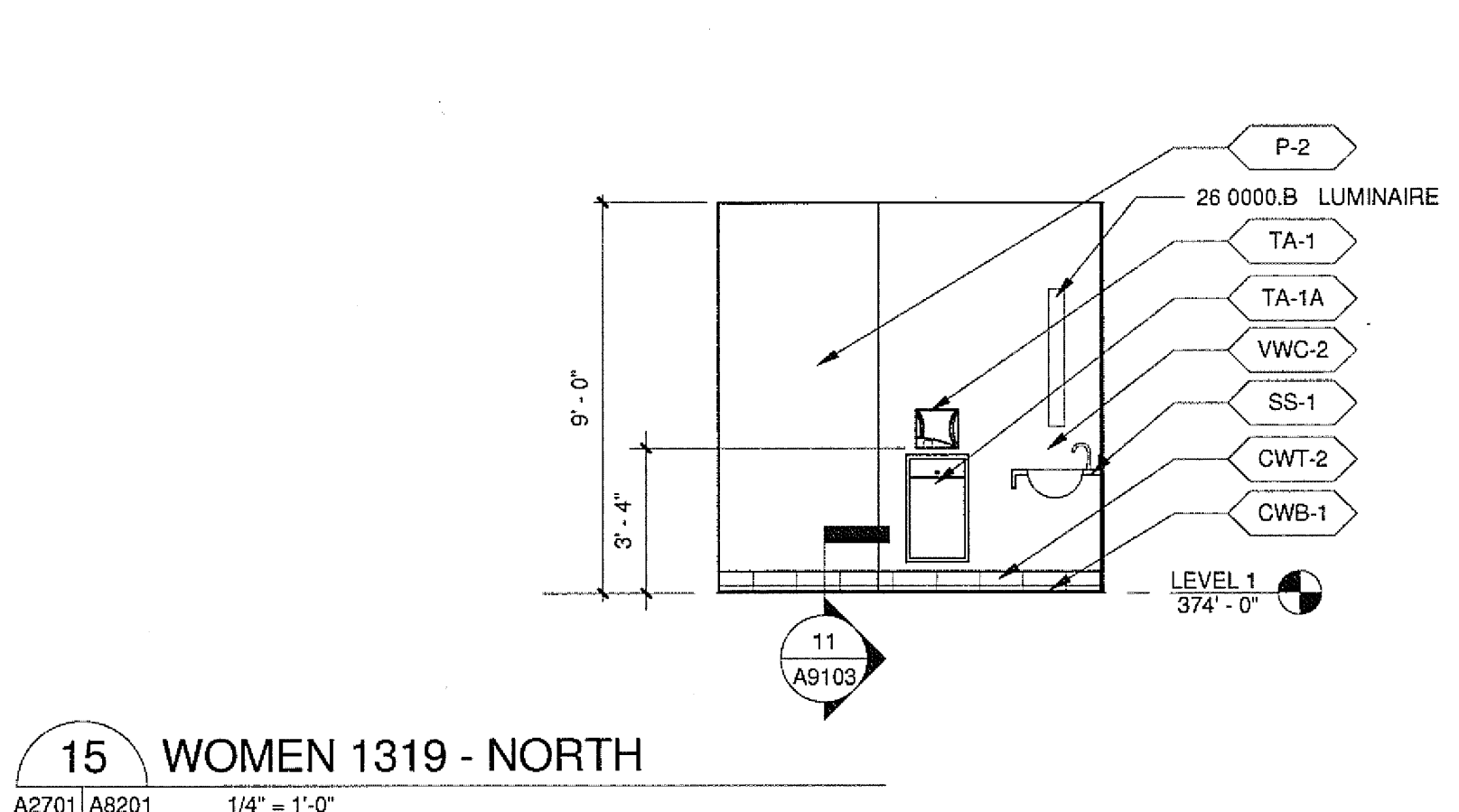
SHEET NAME
 INTERIOR ELEVATIONS
 SHEET NUMBER
A8201



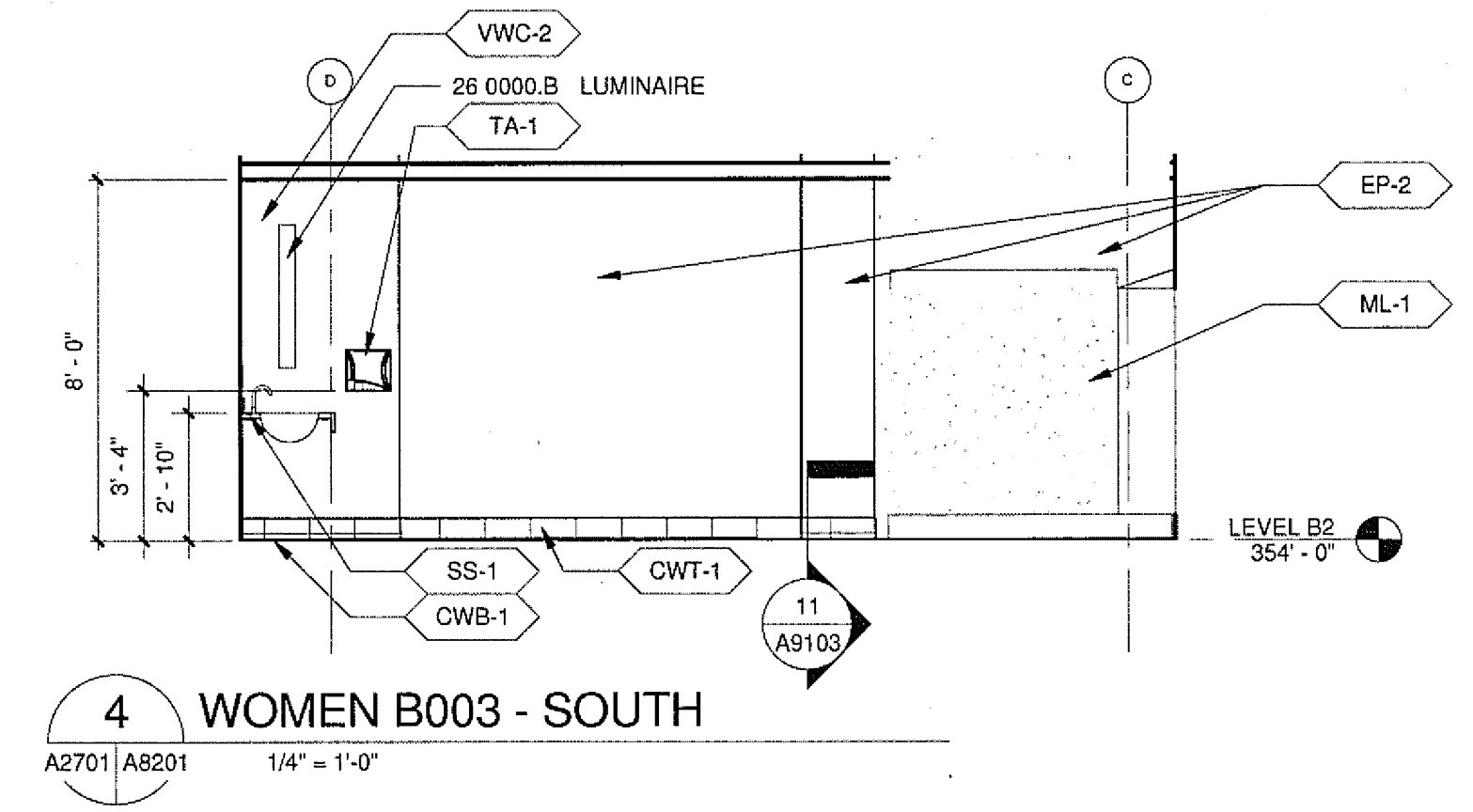
5 WOMEN B003 - WEST
A2701 | A8201 1/4" = 1'-0"



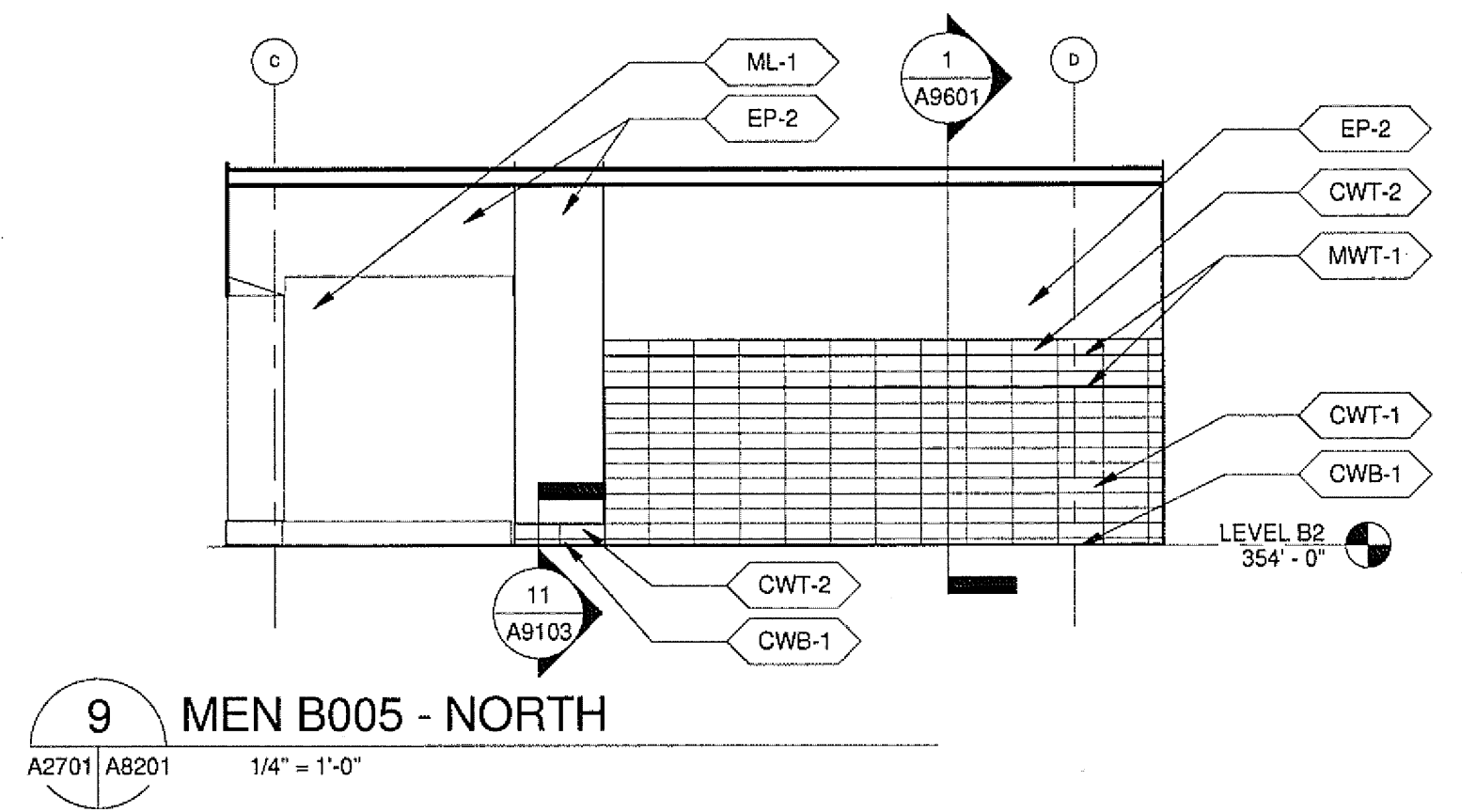
10 MEN B005 - SOUTH
A2701 | A8201 1/4" = 1'-0"



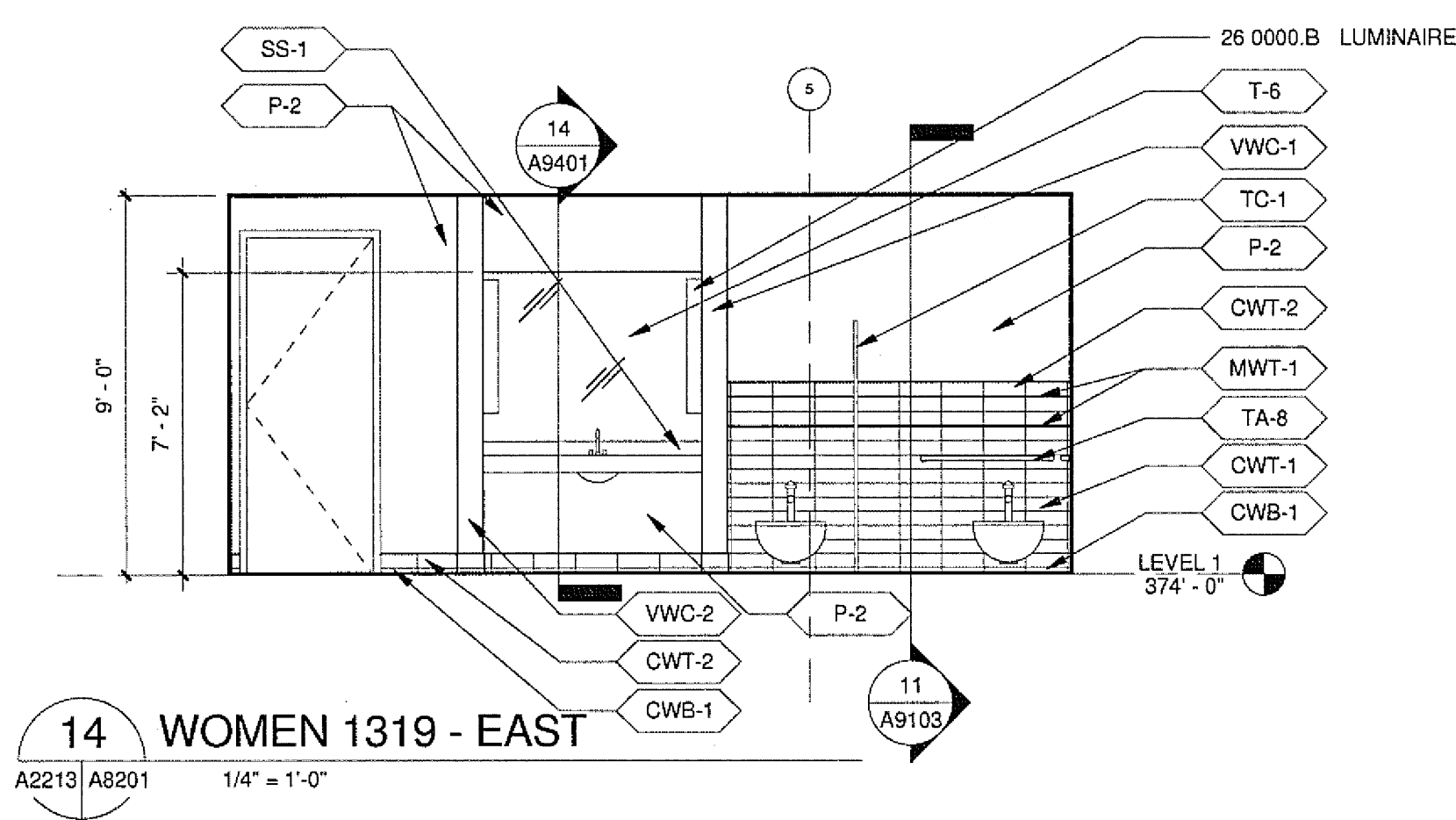
15 WOMEN 1319 - NORTH
A2701 | A8201 1/4" = 1'-0"



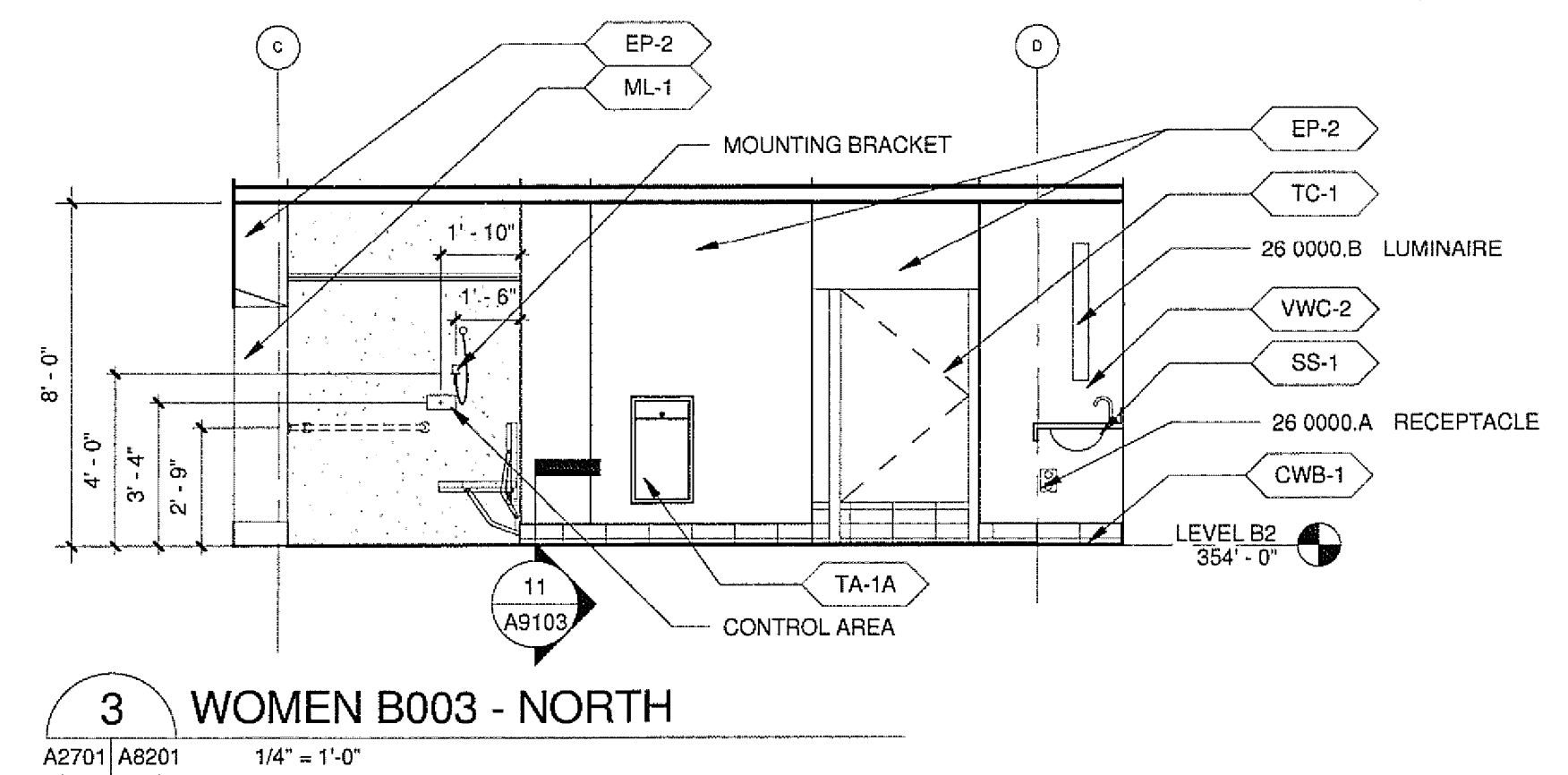
4 WOMEN B003 - SOUTH
A2701 | A8201 1/4" = 1'-0"



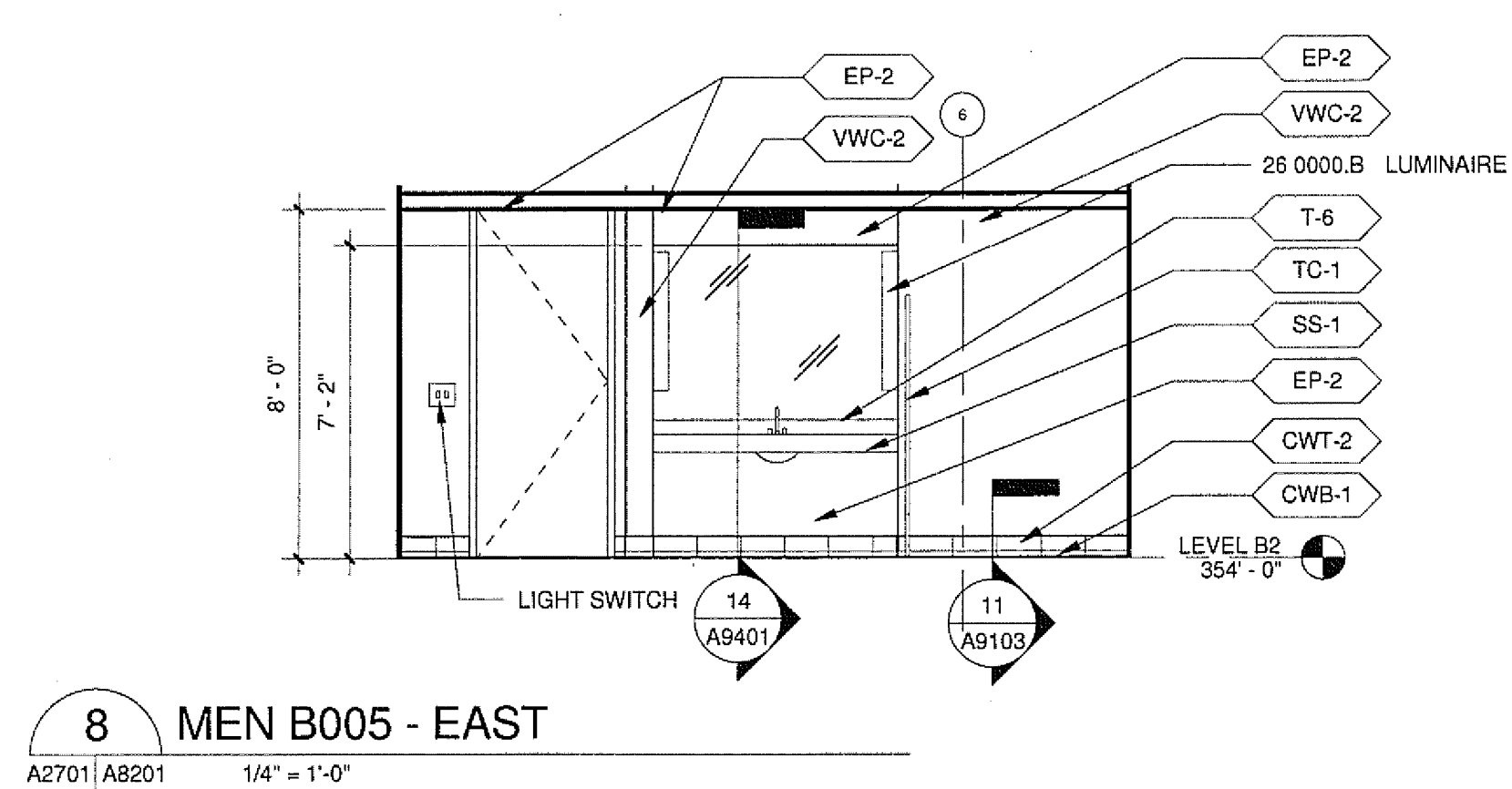
9 MEN B005 - NORTH
A2701 | A8201 1/4" = 1'-0"



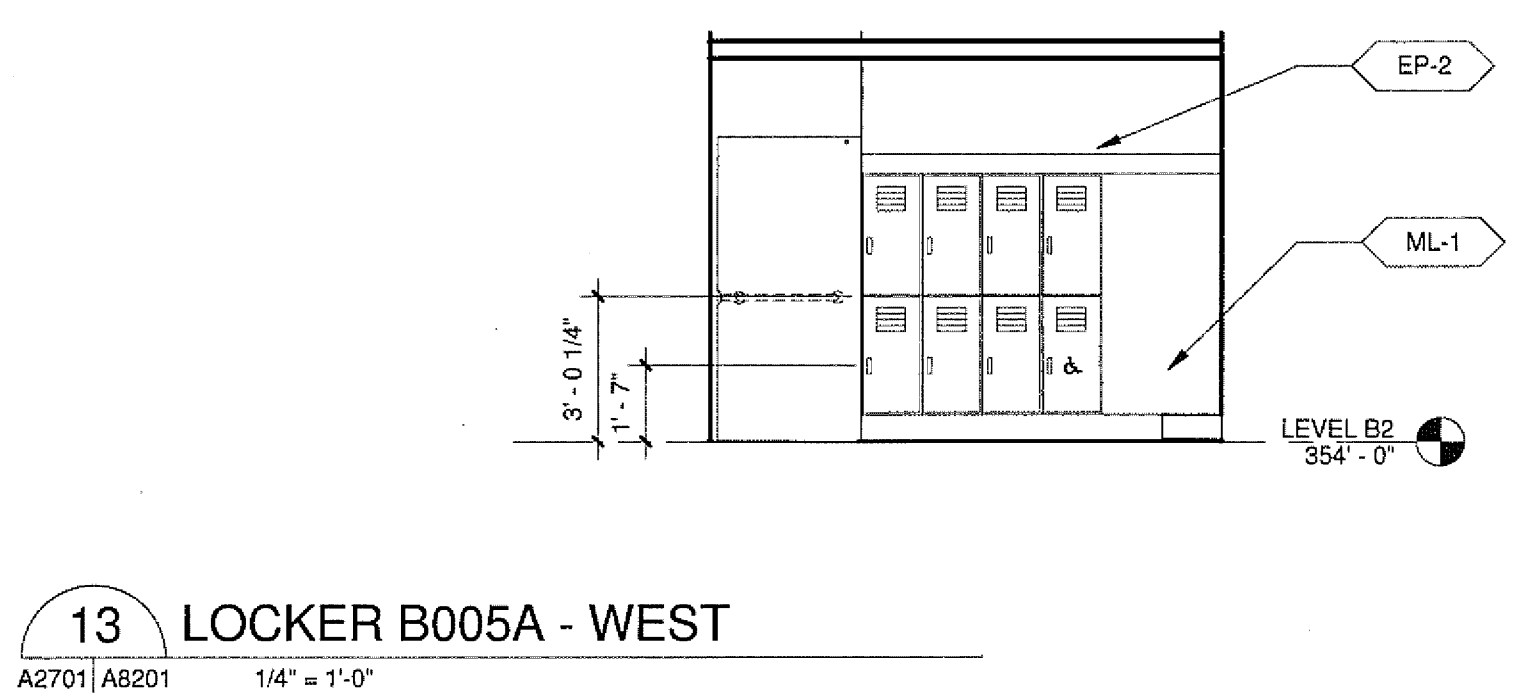
14 WOMEN 1319 - EAST
A2213 | A8201 1/4" = 1'-0"



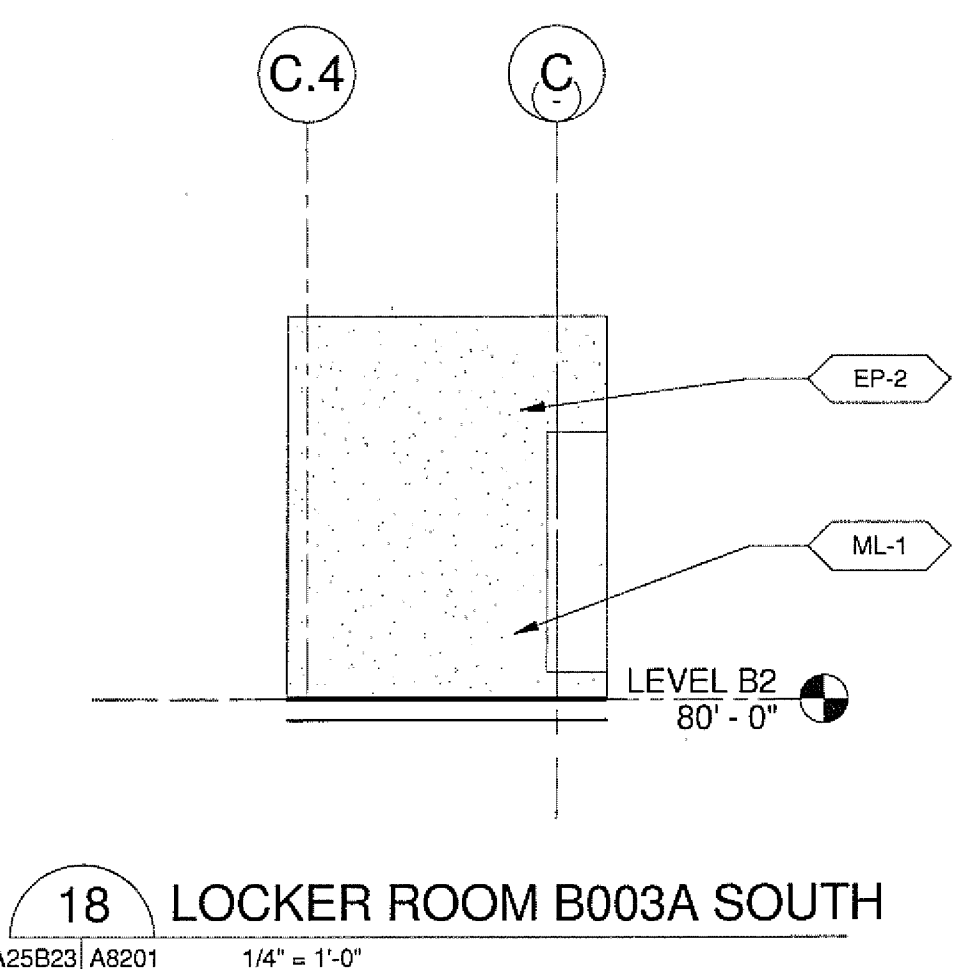
3 WOMEN B003 - NORTH
A2701 | A8201 1/4" = 1'-0"



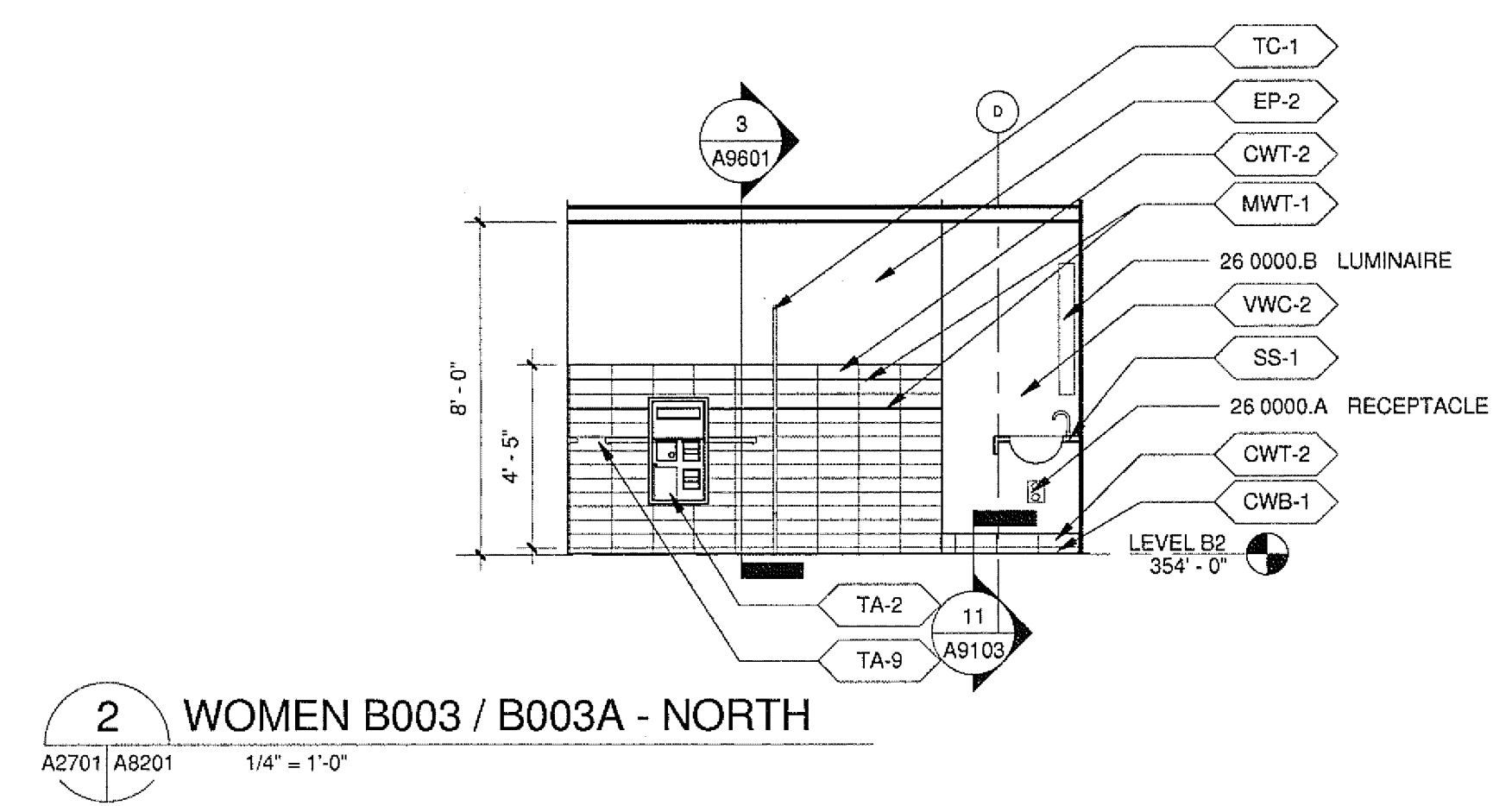
8 MEN B005 - EAST
A2701 | A8201 1/4" = 1'-0"



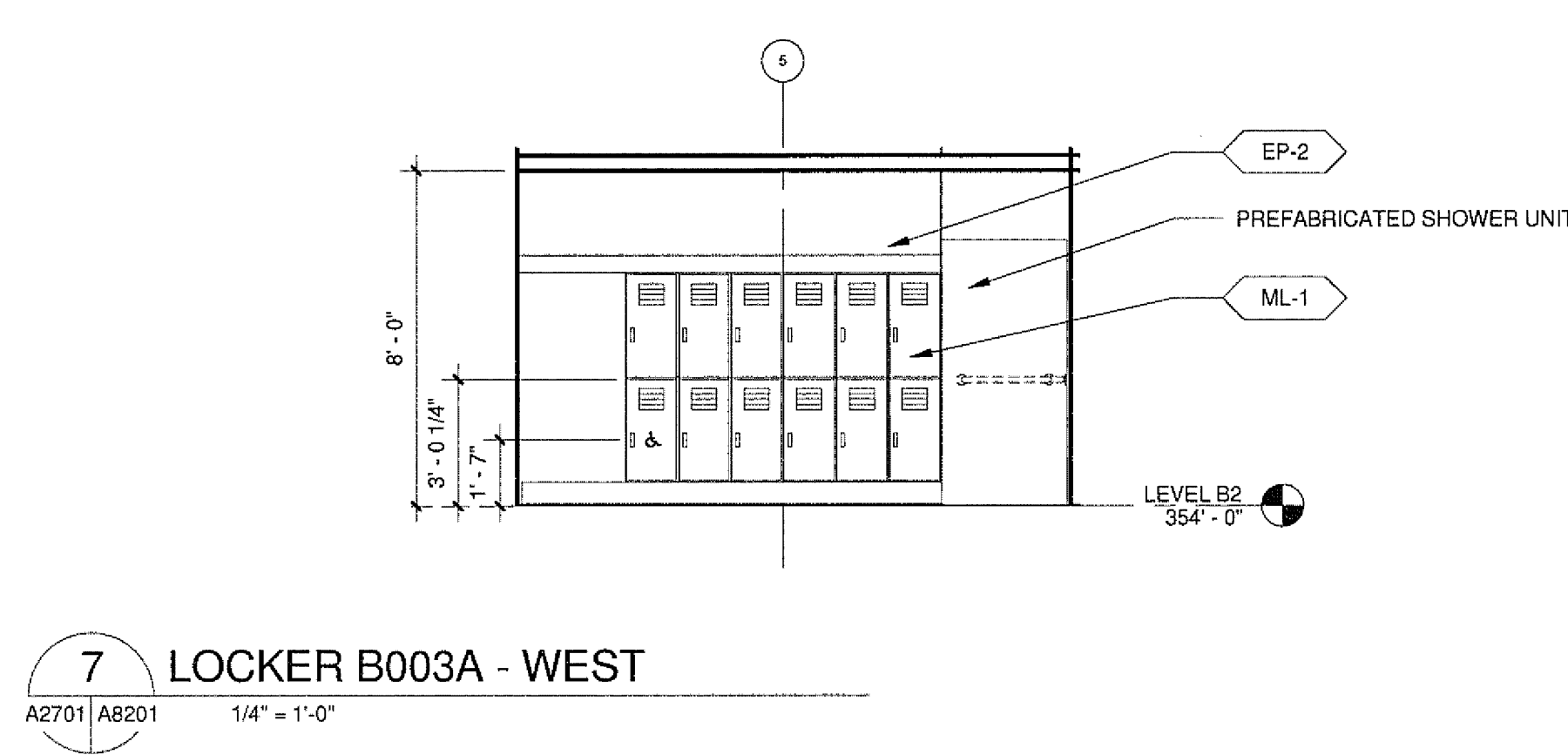
13 LOCKER B005A - WEST
A2701 | A8201 1/4" = 1'-0"



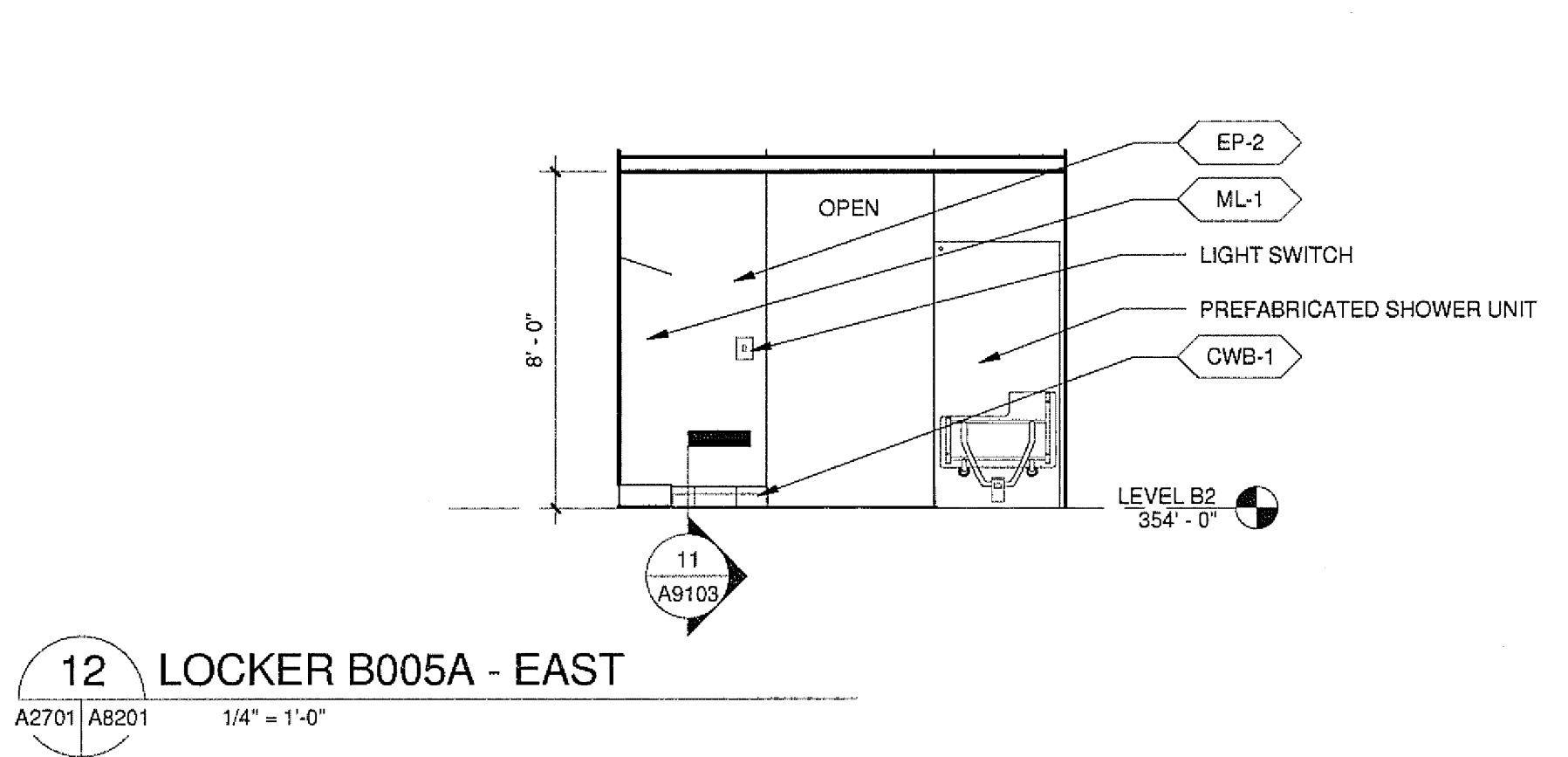
18 LOCKER ROOM B003A SOUTH
A25823 | A8201 1/4" = 1'-0"



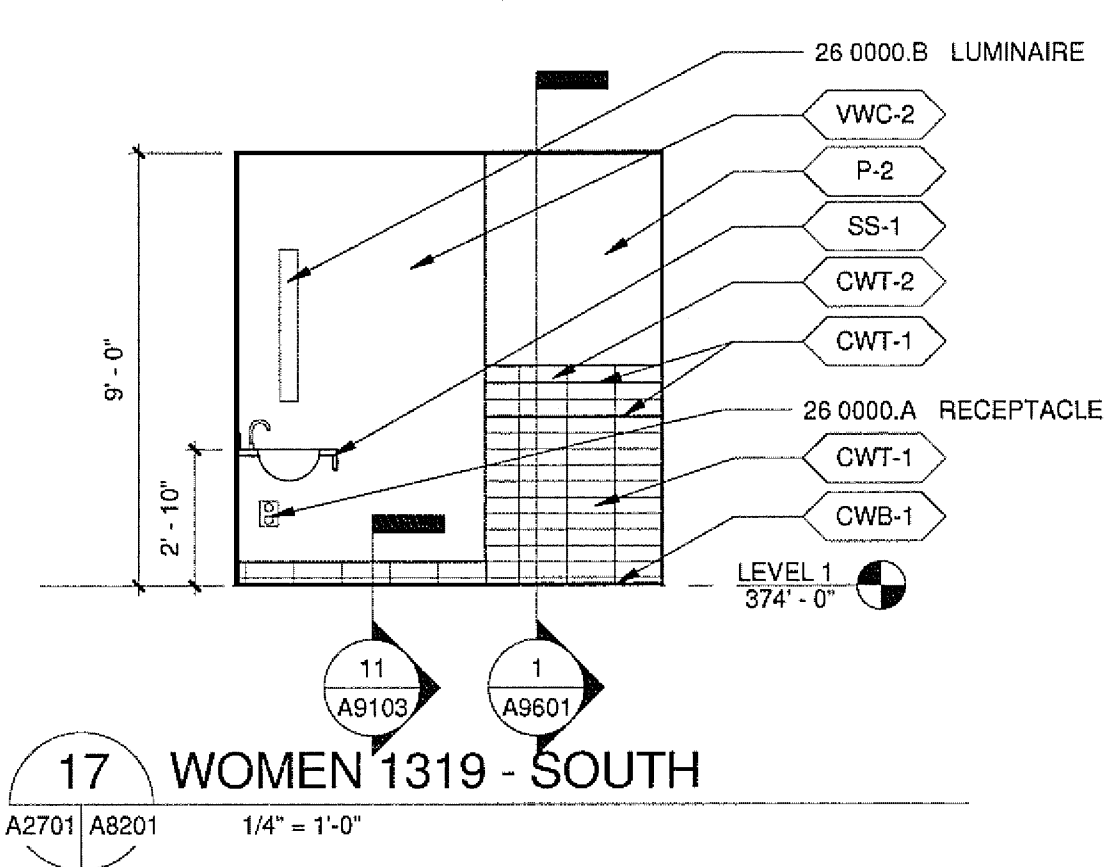
2 WOMEN B003 / B003A - NORTH
A2701 | A8201 1/4" = 1'-0"



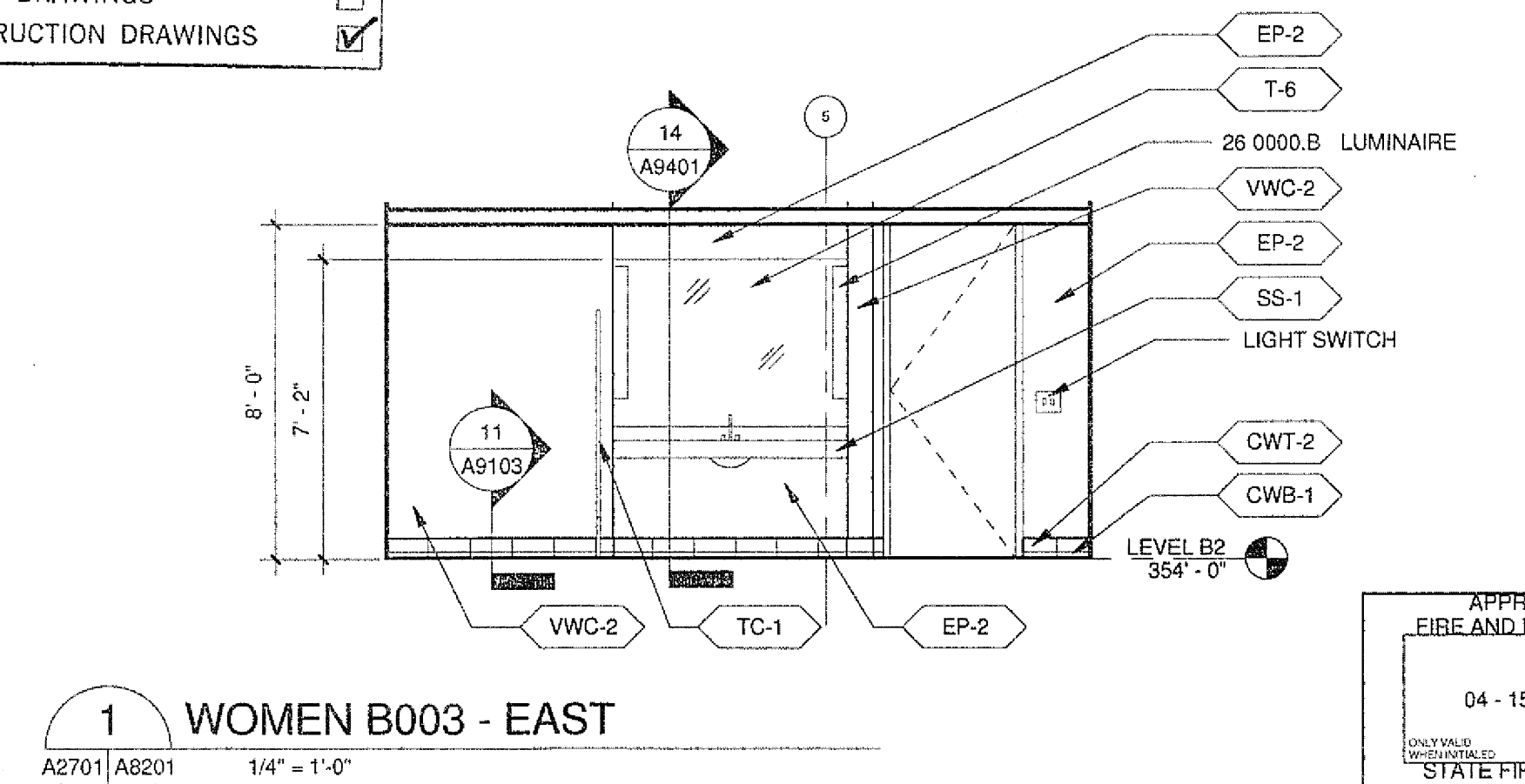
7 LOCKER B003A - WEST
A2701 | A8201 1/4" = 1'-0"



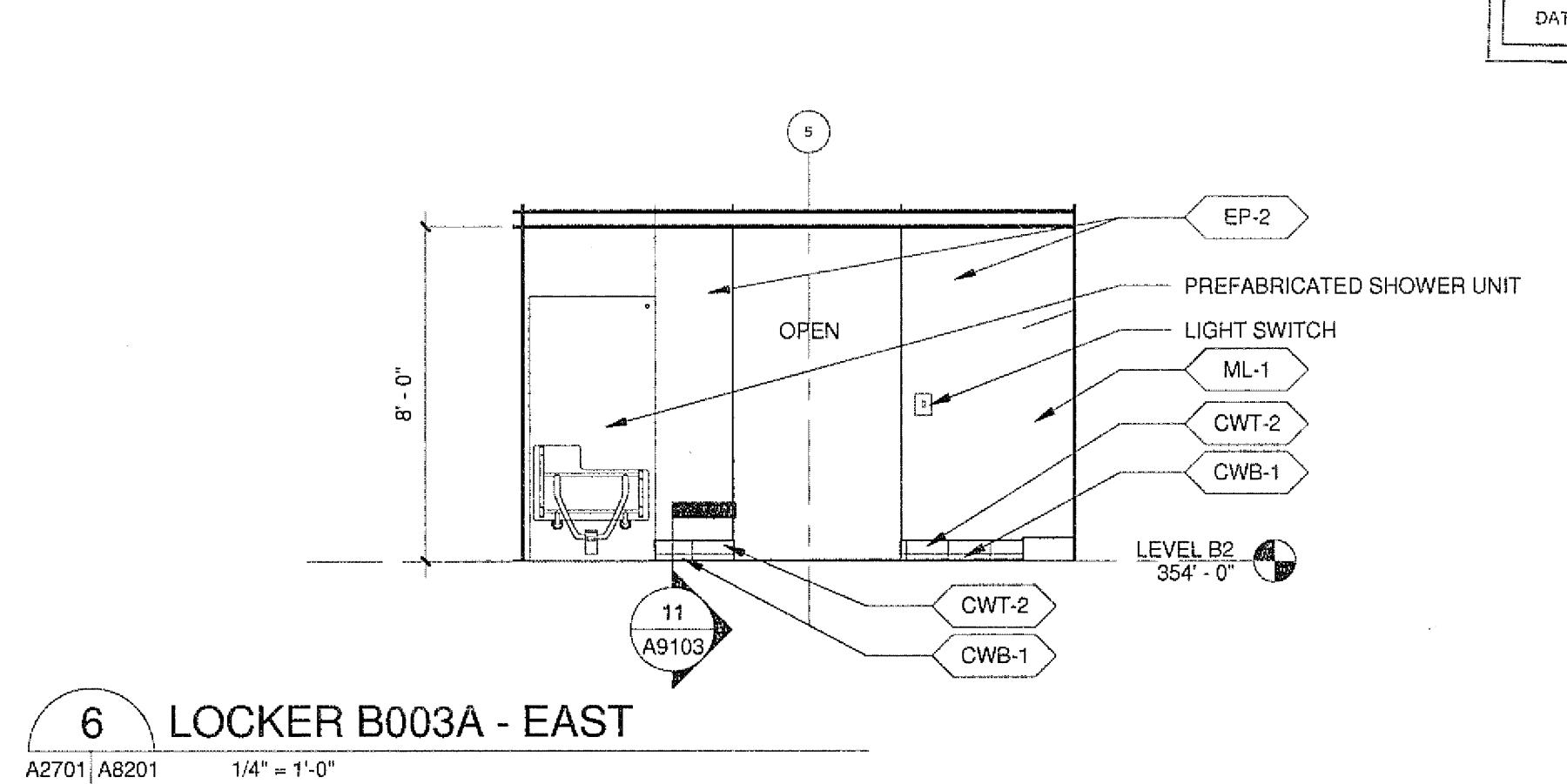
12 LOCKER B005A - EAST
A2701 | A8201 1/4" = 1'-0"



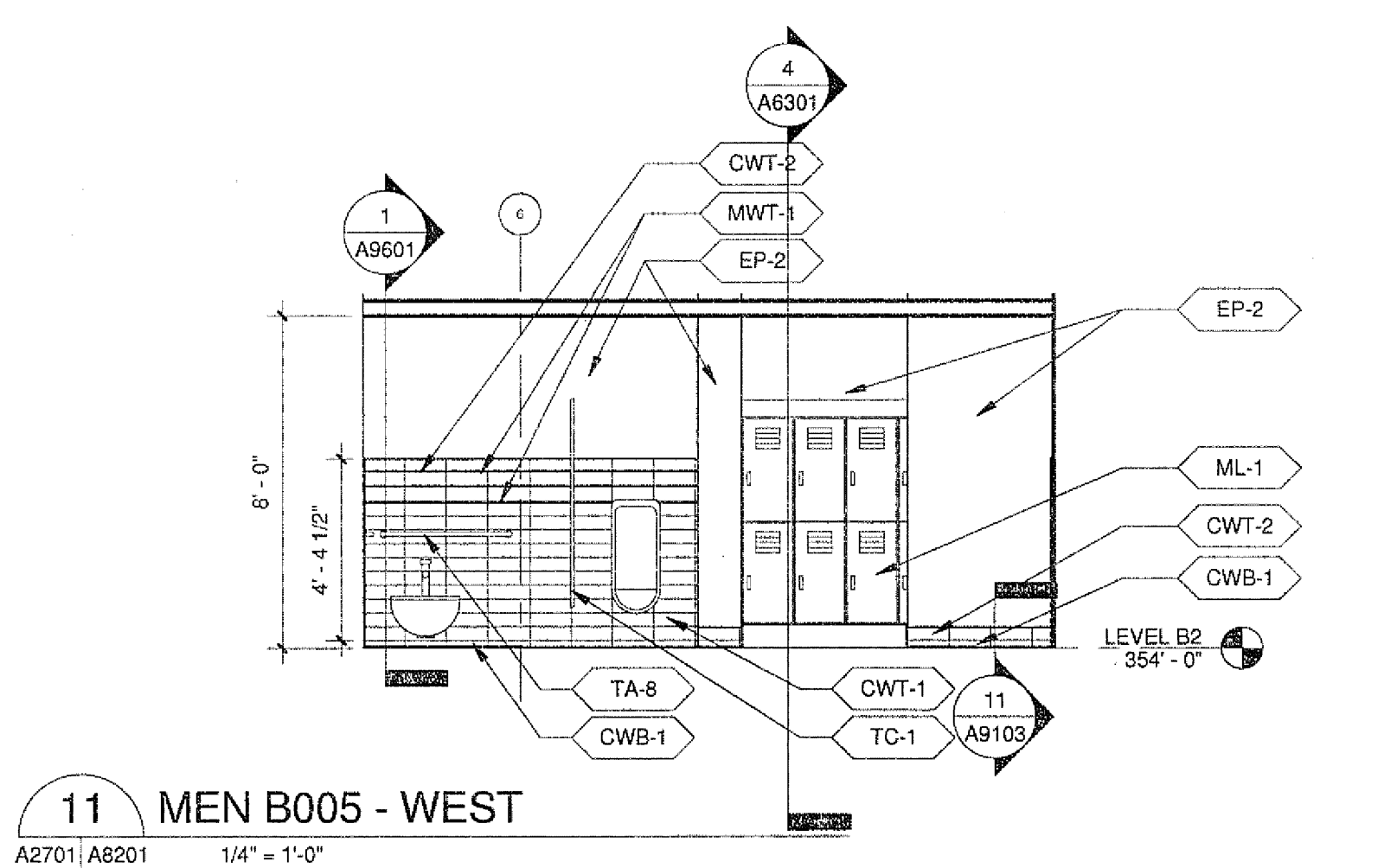
17 WOMEN 1319 - SOUTH
A2701 | A8201 1/4" = 1'-0"



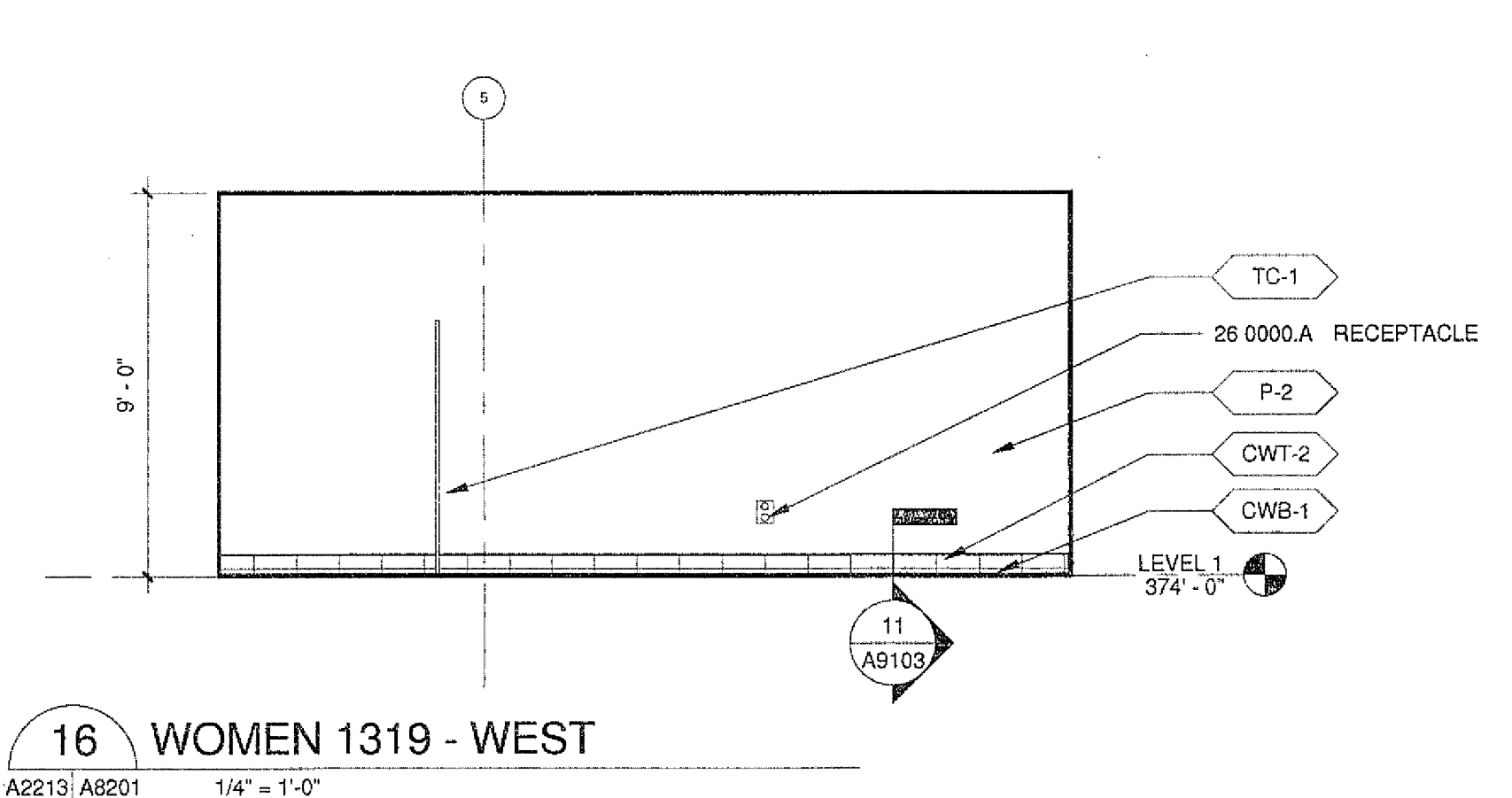
1 WOMEN B003 - EAST
A2701 | A8201 1/4" = 1'-0"



6 LOCKER B003A - EAST
A2701 | A8201 1/4" = 1'-0"



11 MEN B005 - WEST
A2701 | A8201 1/4" = 1'-0"



16 WOMEN 1319 - WEST
A2213 | A8201 1/4" = 1'-0"

U.C.S.D.	
PRELIMINARY DRAWINGS	<input type="checkbox"/>
PROGRESS DRAWINGS	<input type="checkbox"/>
REVIEW DRAWINGS	<input type="checkbox"/>
CONSTRUCTION DRAWINGS	<input checked="" type="checkbox"/>

4/15/2010 10:01:23 AM
 C:\FA\Revit\Projects\200725 SCHM.aseen.Dwg.rvt

Warning: It is a violation of the law for any person, unless acting under the direction of a licensed architect, to alter in any way, if an item in this document is altered, the altering architect, if other than the architect of record, shall affix to the item his seal and the notation "altered by" followed by his signature and the date of such alteration, and the specific description of the alteration.