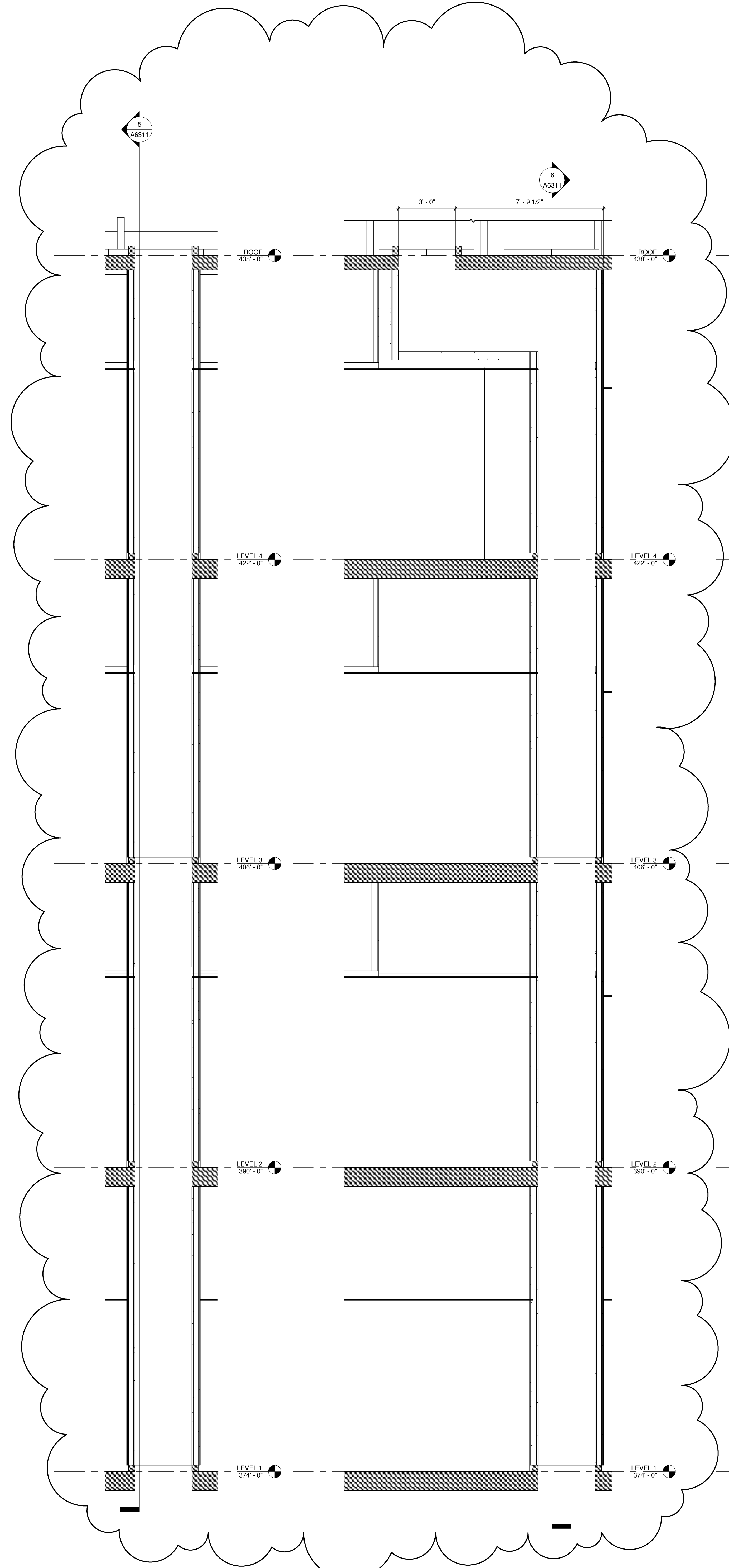


CONSULTANT
 Larkford Phelps Consortium LLC
 555 West Broadway, Suite 1000, San Diego, CA 92101
 (619) 594-1000

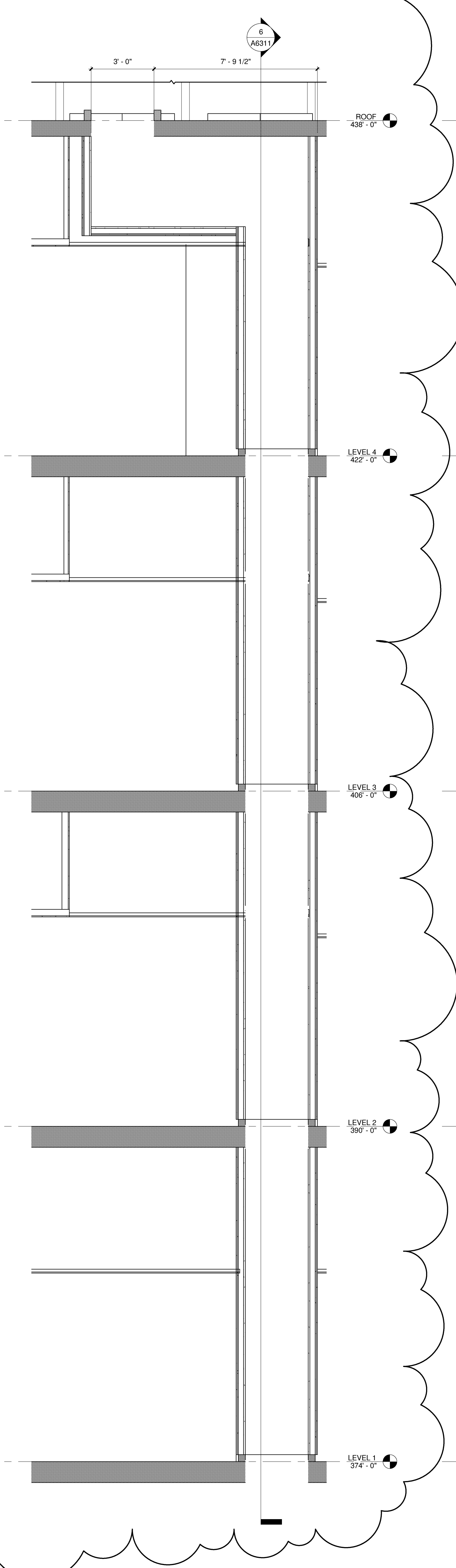
FENTRESS ARCHITECTS
 431 West Broadway, Suite 1000, San Diego, CA 92101
 (619) 594-1000
 DAVIS PARTNERS
 2001 Park Avenue, San Diego, CA 92103
 (619) 594-1000

STAMP
 APPROVED
 FIRE AND PANIC ONLY
 04-15-2010
 STATE FIRE MARSHAL
 CONSTRUCTION SERVICES

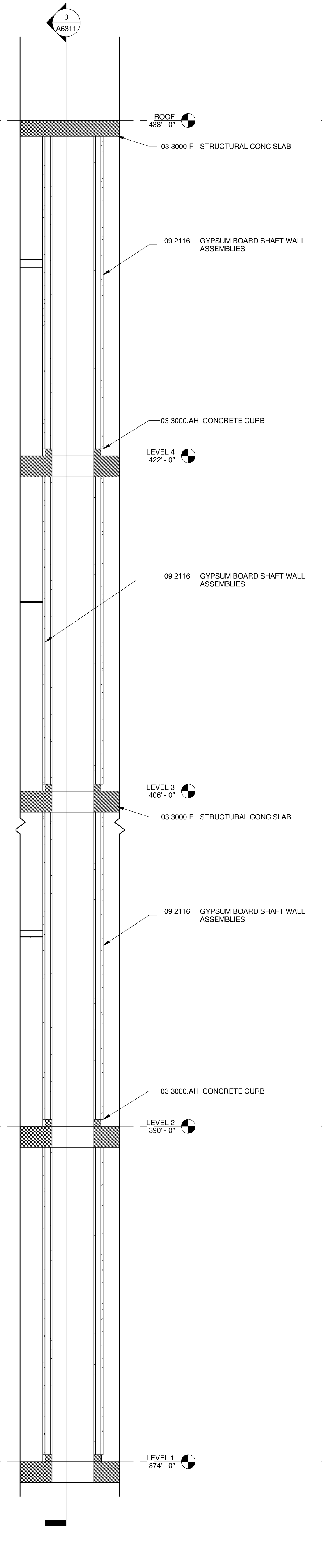
SHEET NAME
 SHAFT WALL SECTIONS
 DRAWN BY: Author
 PROJECT #: 200725.000
 SHEET NUMBER
A6311



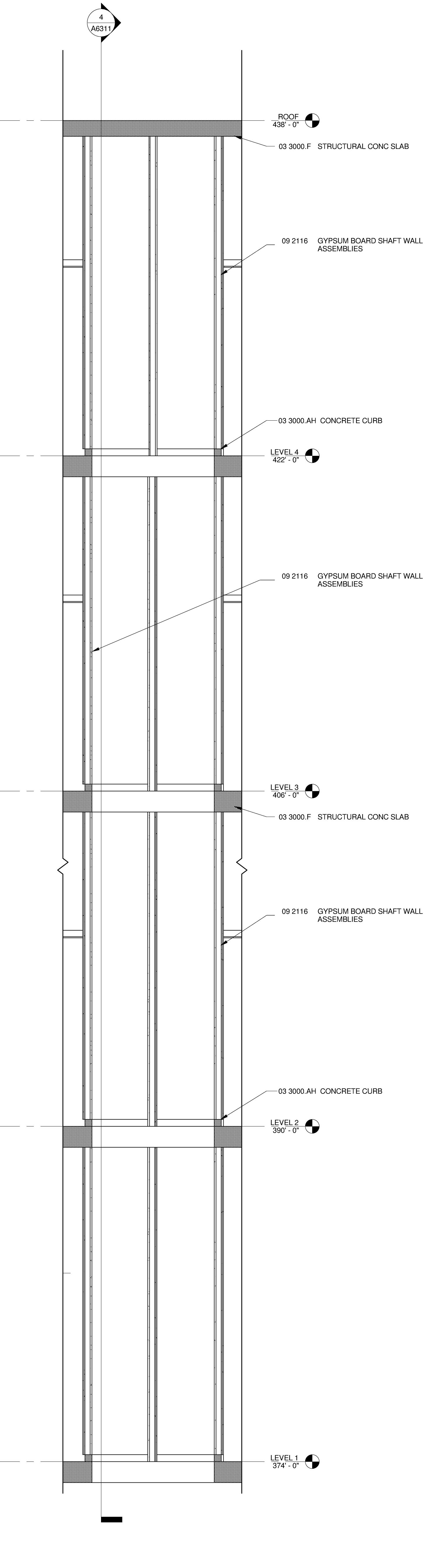
6 SHAFT WALL SECTION
 A2212/A6311 3/8" = 1'-0"



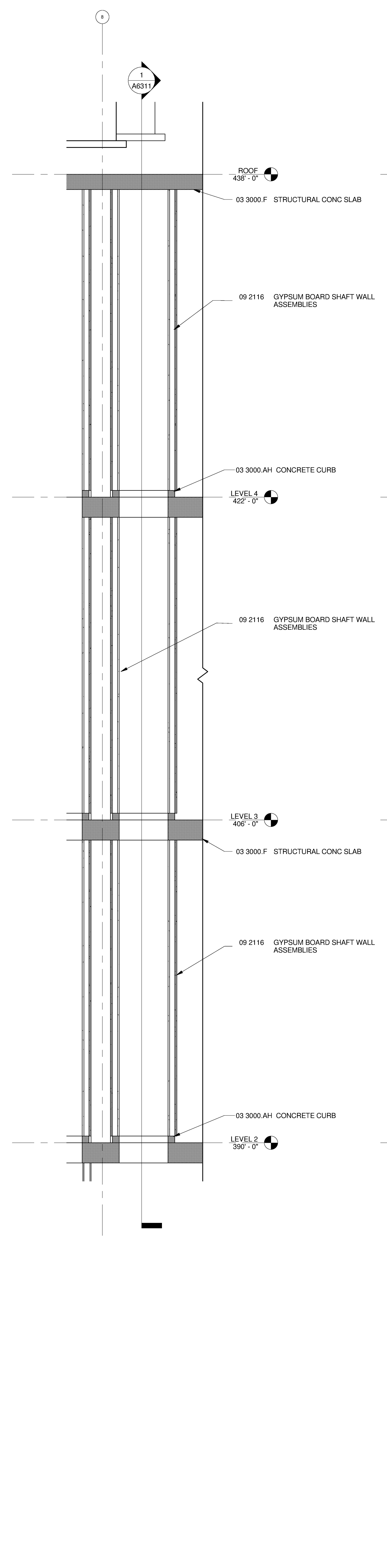
5 SHAFT WALL SECTION
 A2212/A6311 3/8" = 1'-0"



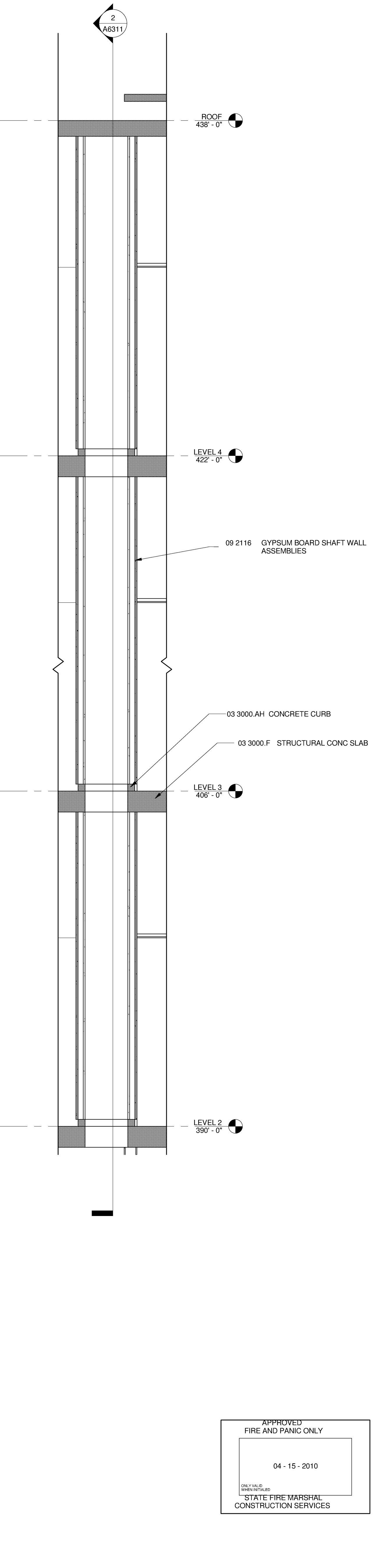
4 SHAFT WALL SECTION
 A2212/A6311 3/8" = 1'-0"



3 SHAFT WALL SECTION
 A2212/A6311 3/8" = 1'-0"



2 SHAFT WALL SECTION
 A2222/A6311 3/8" = 1'-0"



1 SHAFT WALL SECTION
 A2222/A6311 3/8" = 1'-0"

12/15/2009 3:53:52 PM
 C:\P\A\Rev\Proj\A6311\200725_SCRN_A6311.DWG

Warning: It is a violation of the law for any person, unless acting under the direction of a licensed architect, to alter an item in any way. If an item in this document is altered, the altering architect, if other than the architect of record, shall affix to the item his seal and the notation "altered by" followed by his signature and the date of such alteration, and the specific description of the alteration.