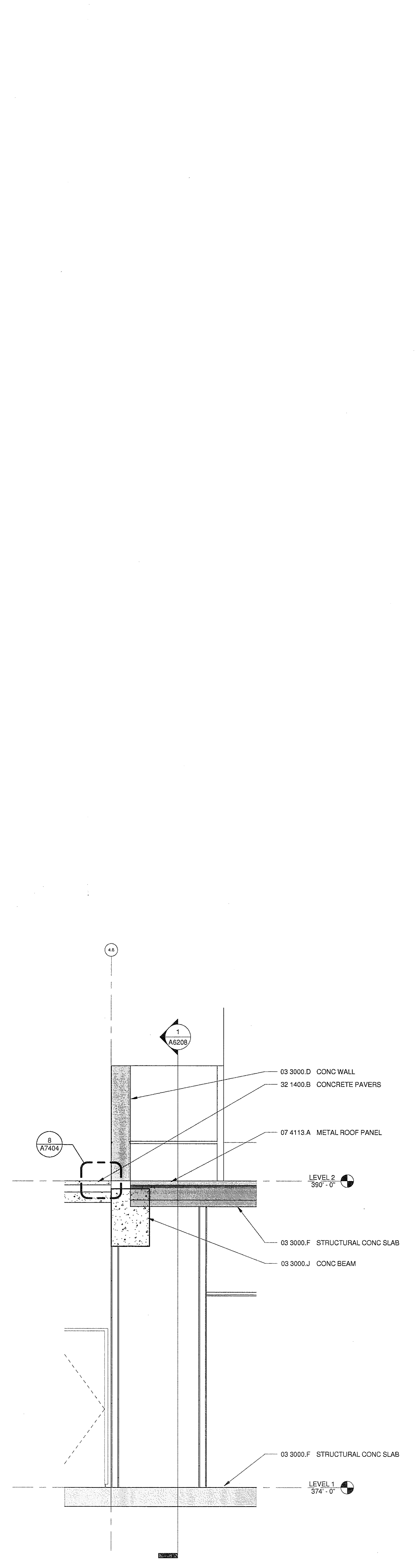
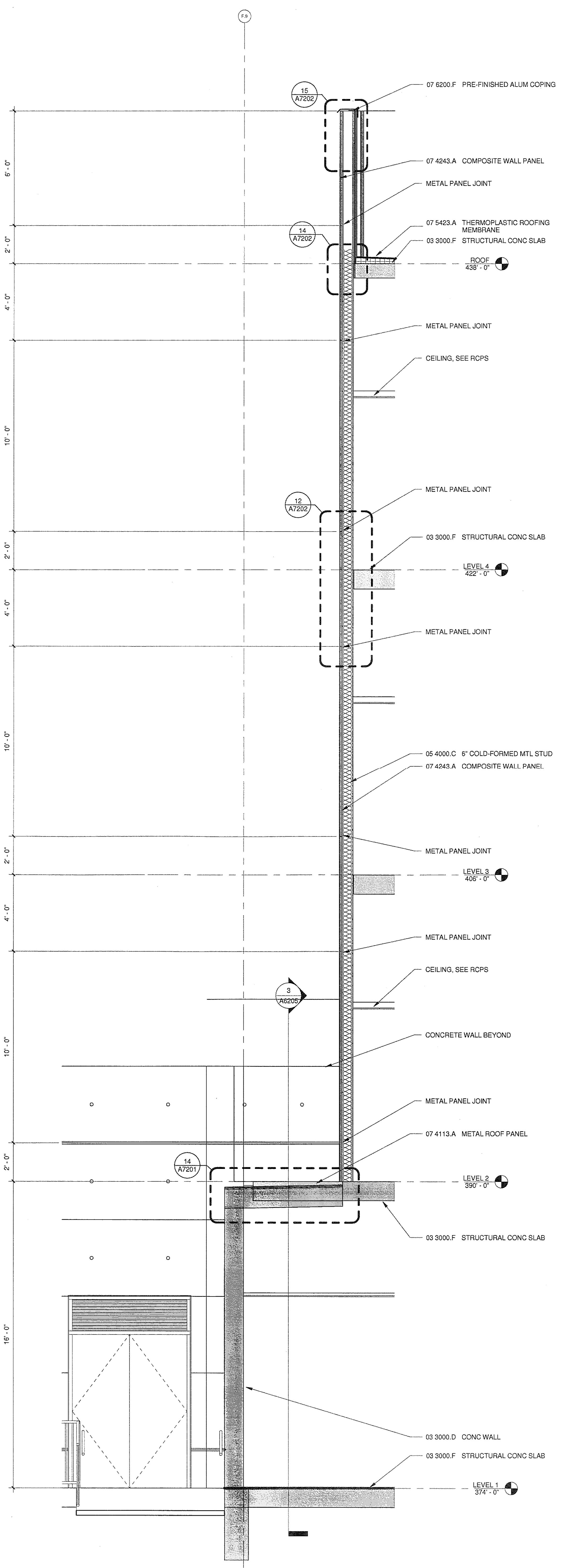


APPROVED FOR FIRE AND PANIC ONLY  
 07-28-10

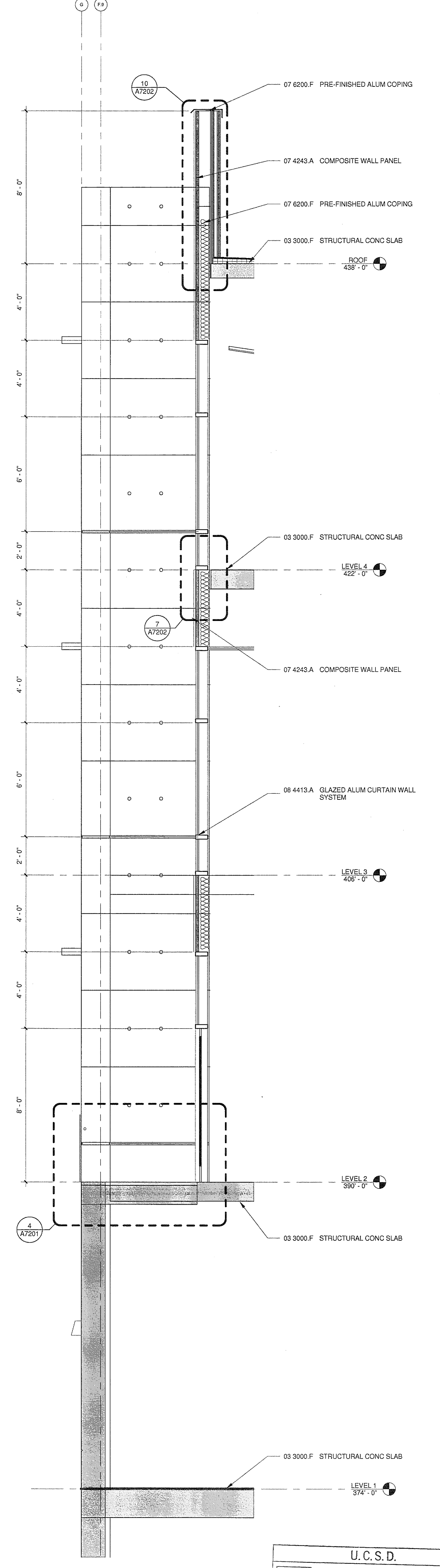
ISSUED FOR	DATE
BID PK #1 100 CD	10.06.08
50% PROGRESS	10.24.08
BID PK #1 80 CD	12.01.08
BID PK #1 100 CD	02.18.09
BID PK #2 100 CD	03.28.09
100% CD	05.08.09
CD-3	01.07.10



**3 WALL SECTION**  
 A2120/A6205 3/8" = 1'-0"



**2 WALL SECTION**  
 A2110/A6205 3/8" = 1'-0"



**1 WALL SECTION**  
 A2110/A6205 3/8" = 1'-0"

U.C.S.D.  
 PRELIMINARY DRAWINGS  
 PROGRESS DRAWINGS  
 REVIEW DRAWINGS  
 CONSTRUCTION DRAWINGS

SANFORD CONSORTIUM FOR REGENERATIVE MEDICINE  
 2880 TORREY PINES SCENIC DRIVE  
 LA JOLLA, CALIFORNIA 92037

CONSULTANT  
 Sanford/Pines Consortium LLC  
 10000 San Diego Avenue, Suite 100  
 San Diego, CA 92121

ARCHITECTS  
 FENTRESS ARCHITECTS  
 415 Broadway, Suite 200  
 San Diego, CA 92101  
 P: 619.594.1111  
 F: 619.594.1112  
 www.fentress.com

ARCHITECTS  
 DAVIS  
 2801 Fifth Avenue, San Diego, CA 92103

LICENSED ARCHITECT  
 Jeffrey W. Olson  
 No. C-31761  
 REG. 03/12/11  
 1955  
 STATE OF CALIFORNIA

SHEET NAME  
 WALL SECTIONS  
 DRAWN BY: Author  
 PROJECT # 200725.000  
 SHEET NUMBER  
**A6205**

U.C.S.D. 15.06.09 PM  
 CD-3 Item Progress 05/27/25 SDCRM\_Steve Dault

Warning: It is a violation of the law for any person, unless acting under the direction of a licensed architect, to alter an item in any way. If an item in this document is altered, the altering architect, if other than the architect of record, shall affix the item his seal and the notation "altered by" followed by his signature and the date of such alteration, and the specific description of the alteration.