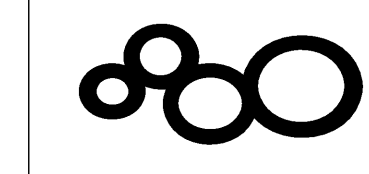


ISSUED FOR DATE	
BD PK #1	10.08.08
50% PROGRESS	10.24.08
BD PK #1 80% CD	12.01.08
BD PK #1 100 CD	02.16.09
BD PK #2 100 CD	03.26.09
100% CD	05.08.09
AS COR1	02.26.10
AS COR3	04.15.10
RFI #793	07.08.10
AS1 28	01.21.11
AS1 28 R2	02.16.11

KEYNOTES

- 1 NOT USED
- 2 NOT USED
- 3 DRYING RACK
- 4 ENVIRONMENTAL ROOM CONTROL PANEL
- 5 TASK LIGHT - ALL BOTTOM SHELF LOCATIONS
- 6 OVERHEAD SERVICE CARRIER
- 7 2-TIER ADJUSTABLE WALL SHELVING
- 8 MARKER BOARD
- 9 ETCHED PLATE - SEE SHEET A4101
- 10 BENCH TOP SUPPORT BRACKET-SEE DETAIL 10/AB402

SANFORD CONSORTIUM FOR REGENERATIVE MEDICINE
 2880 TORREY PINES SCENIC DRIVE
 LA JOLLA, CALIFORNIA 92037



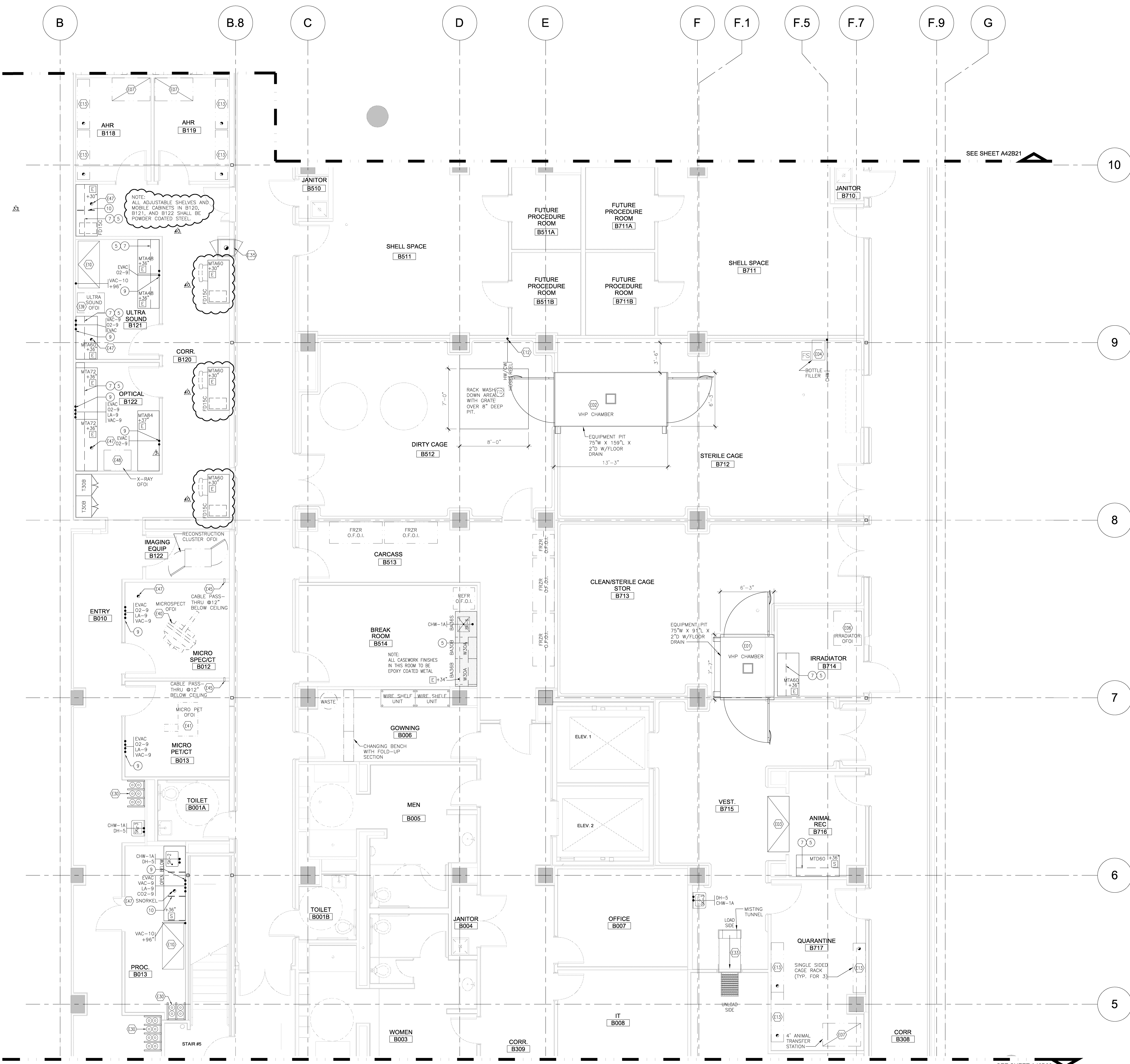
JACOBS CONSULTANCY
 CONSULTANT
 4000 Wilshire Blvd., Suite 1000
 Los Angeles, CA 90010
 310.760.0000

Lanford/Phelps Consortium LLC
 CONSULTANT
 1000 Wilshire Blvd., Suite 1000
 Los Angeles, CA 90010
 310.760.0000

FENTRESS ARCHITECTS
 ARCHITECTS
 415 Broadway, Suite 200
 San Francisco, CA 94111
 415.774.0000

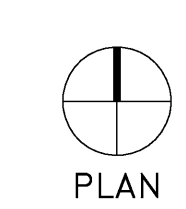
DAVIS DAVIS ARCHITECTS
 ARCHITECTS
 1401 Fifth Avenue, Suite 1000
 San Diego, CA 92101
 619.594.0000

SHEET NAME
VIVARIUM ZONE TWO
 LAB FURNISHINGS PLAN
 DRAWN BY: JD
 PROJECT #: 200725.000
 SHEET NUMBER
A42B22



SEE SHEET A42B21

SEE SHEET A42B23



1 VIVARIUM ZONE TWO
 A41B22 SCALE: 1/4"=1'-0"

11/14/2008 1:38:52 PM

Warning: It is a violation of the law for any person, unless acting under the direction of a licensed architect, to alter an item in any way. If an item in this document is altered, the altering architect, if other than the architect of record, shall affix to the item his seal and the notation "altered by" followed by his signature and the date of such alteration, and the specific description of the alteration.