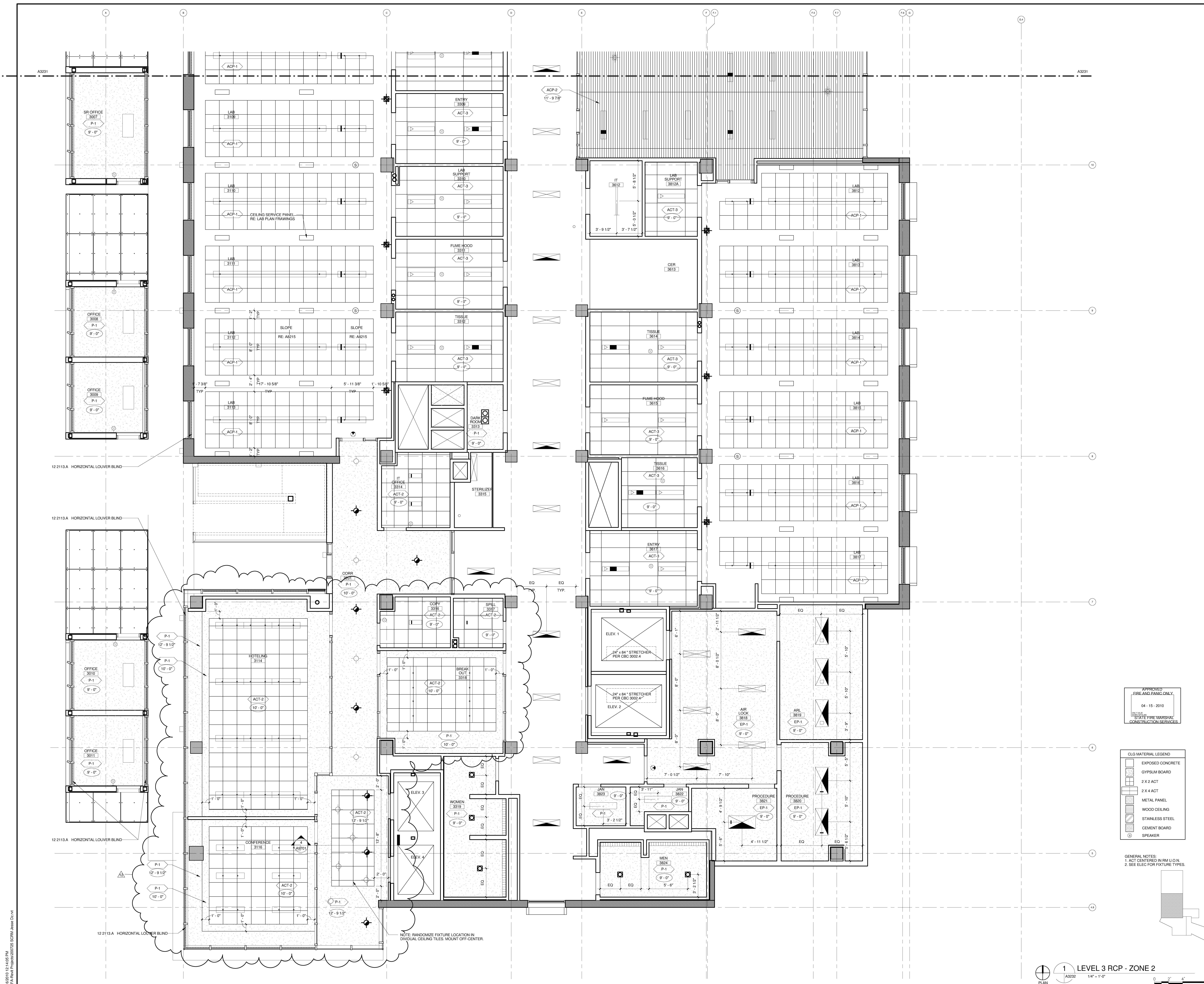


CONSULTANT
 04-15-2010
 APPROVED FIRE AND PANG ONLY
 STATE FIRE MARSHAL
 CONSTRUCTION SERVICES

FENTRESS ARCHITECTS
 415 Wilshire, Suite 200
 Los Angeles, CA 90010
 310.272.0888
 DAVIS BROWN
 2001 P Street, Suite 200
 San Diego, CA 92101

STAMP
 SHEET NAME
 LEVEL 3 RCP - ZONE 2
 DRAWN BY: Author
 PROJECT #: 200725.000
 SHEET NUMBER
A3232



APPROVED FIRE AND PANG ONLY
 04-15-2010
 STATE FIRE MARSHAL
 CONSTRUCTION SERVICES

- CLG MATERIAL LEGEND**
- EXPOSED CONCRETE
 - GYPSUM BOARD
 - 2 X 2 ACT
 - 2 X 4 ACT
 - METAL PANEL
 - WOOD CEILING
 - STAINLESS STEEL
 - CEMENT BOARD
 - SPEAKER

GENERAL NOTES:
 1. ACT CENTERED IN RM U.O.N.
 2. SEE ELEC FOR FIXTURE TYPES.

1 LEVEL 3 RCP - ZONE 2
 A3232 1/4" = 1'-0"
 PLAN

8/16/2010 12:40:05 PM
 C:\P\Arch\Proj\200725\SCRN_A3232.DWG

Warning: It is a violation of the law for any person, unless acting under the direction of a licensed architect, to alter an item in any way. If an item in this document is altered, the altering architect, if other than the architect of record, shall affix to the item his seal and the notation "altered by" followed by his signature and the date of such alteration, and the specific description of the alteration.