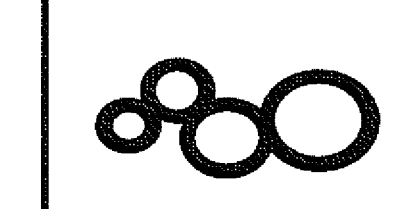


ISSUED FOR	DATE
BID PK #1 100 CD	10.06.08
50% PROGRESS	10.24.08
BID PK #1 80 CD	12.01.08
BID PK #1 100 CD	02.19.09
BID PK #2 100 CD	03.26.09
100% CD	05.09.09
CD-4	01.07.10
CD-4	04.15.10

**SANFORD CONSORTIUM FOR REGENERATIVE MEDICINE**  
 2880 TORREY PINES SCENIC DRIVE  
 LA JOLLA, CALIFORNIA 92037



CONSULTANT

U.C.S.D.  
 PRELIMINARY DRAWINGS  
 PROGRESS DRAWINGS  
 REVIEW DRAWINGS  
 CONSTRUCTION DRAWINGS

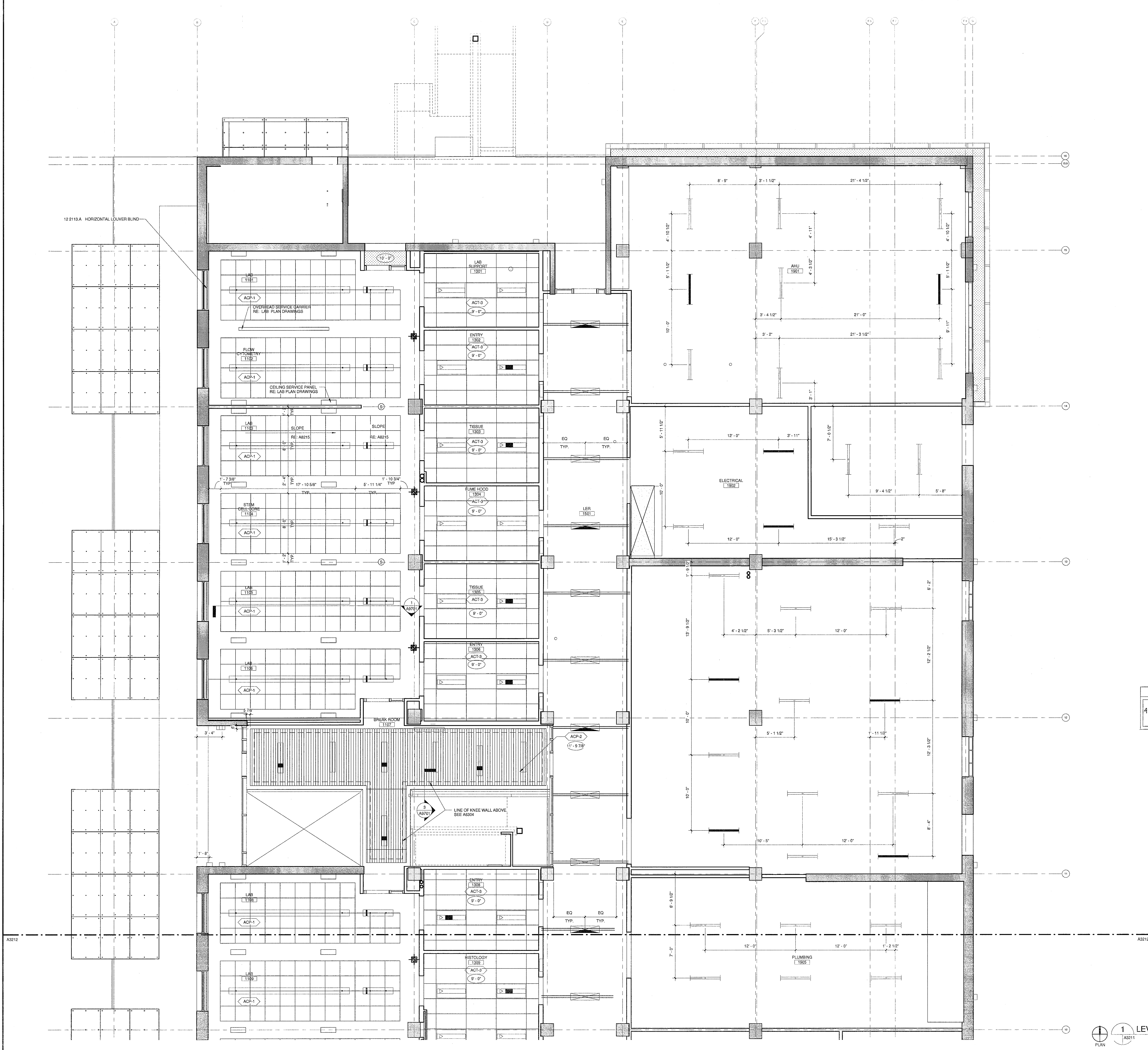
APPROVED  
 FIBER AND PANIC ONLY  
 04-15-2010  
 STATE FIRE MARSHAL  
 CONSTRUCTION SERVICES

CLG MATERIAL LEGEND  
 EXPOSED CONCRETE  
 GYPSUM BOARD  
 2 X 2 ACT  
 2 X 4 ACT  
 METAL PANEL  
 WOOD CEILING  
 STAINLESS STEEL  
 CEMENT BOARD

GENERAL NOTES  
 1. ACT CENTERED IN RM U.O.A.  
 2. SEE ELEC. FOR FIXTURE TYPES.

STAMP  
 LICENSED ARCHITECT  
 Jeffrey W. Olson  
 No. C-31761  
 REG. 03/21/11  
 STATE OF CALIFORNIA

SHEET NAME  
 LEVEL 1 RCP - ZONE 1  
 DRAWN BY: Author  
 PROJECT #: 200725-000  
 SHEET NUMBER  
**A3211**



U.C.S.D.  
 PRELIMINARY DRAWINGS  
 PROGRESS DRAWINGS  
 REVIEW DRAWINGS  
 CONSTRUCTION DRAWINGS

APPROVED  
 FIBER AND PANIC ONLY  
 04-15-2010  
 STATE FIRE MARSHAL  
 CONSTRUCTION SERVICES

CLG MATERIAL LEGEND  
 EXPOSED CONCRETE  
 GYPSUM BOARD  
 2 X 2 ACT  
 2 X 4 ACT  
 METAL PANEL  
 WOOD CEILING  
 STAINLESS STEEL  
 CEMENT BOARD

GENERAL NOTES  
 1. ACT CENTERED IN RM U.O.A.  
 2. SEE ELEC. FOR FIXTURE TYPES.

1 LEVEL 1 RCP - ZONE 1  
 1/4" = 1'-0"  
 PLAN

4/15/2010 9:46:44 AM  
 C:\P\Revit\Projects\000725\_SCFM\_110001.Dwg

Warning: It is a violation of the law for any person, unless acting under the direction of a licensed architect, to alter an item in any way. If an item in this document is altered, the altering architect, if other than the architect of record, shall affix the item his seal and the notation "altered by" followed by his signature and the date of such alteration, and the specific description of the alteration.