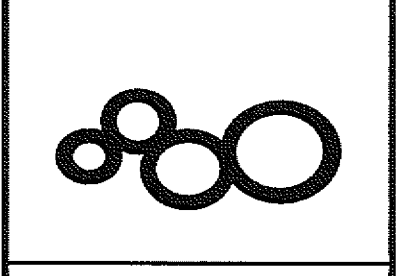


ISSUED FOR	DATE
100% CD	05.08.09
CD-3	01.07.10

SANFORD CONSORTIUM FOR REGENERATIVE MEDICINE
 2880 TORREY PINES SCENIC DRIVE
 LA JOLLA, CALIFORNIA 92037



CONSULTANT
 Lanford/Phelps Consortium LLC
 415 Broadway, Suite 200
 San Francisco, CA 94102
 415.774.2200

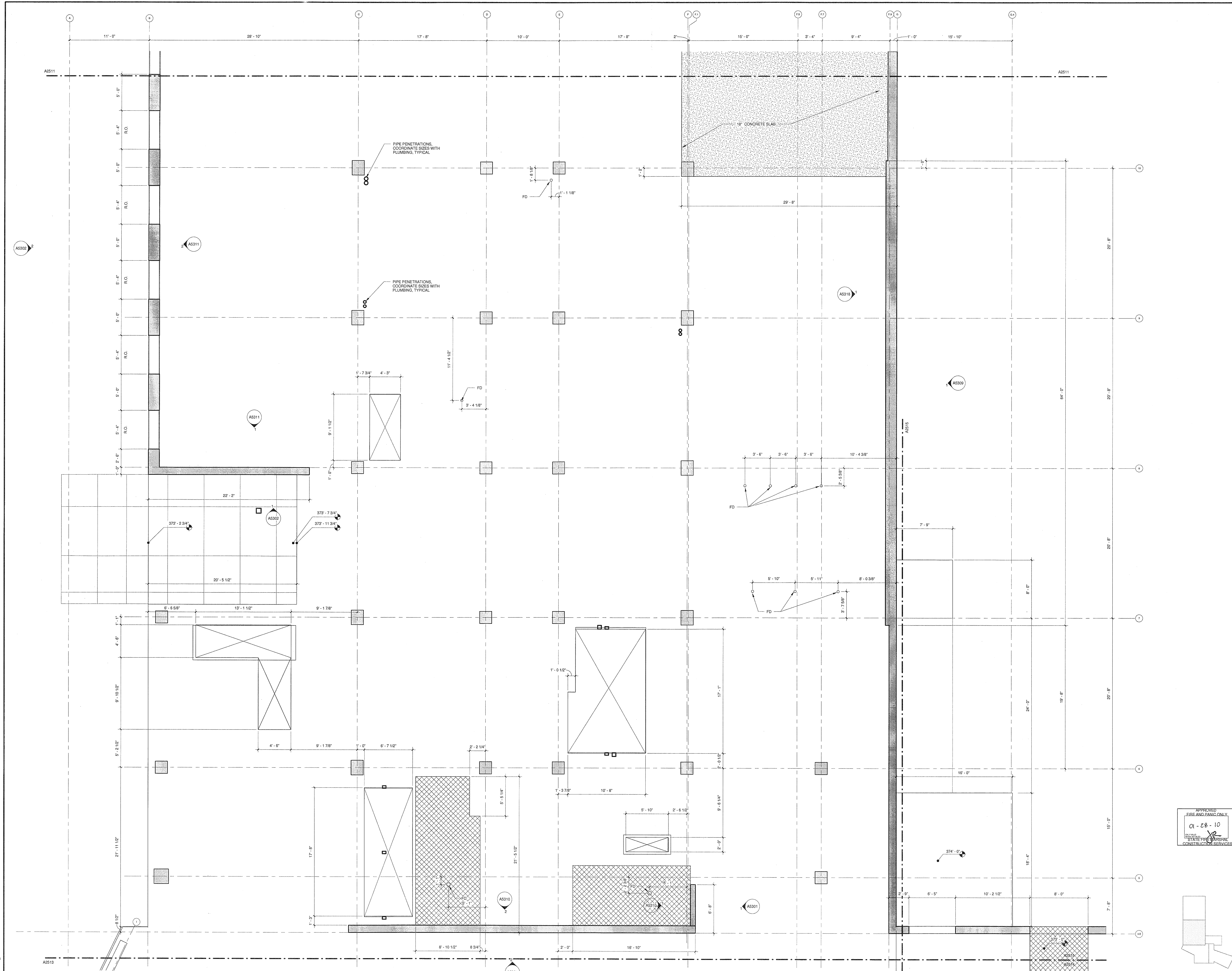
FENTRESS ARCHITECTS
 415 Broadway, Suite 200
 San Francisco, CA 94102
 415.774.2200

DAVID DAVIS ARCHITECTS
 3400 Park Avenue, San Diego, CA 92103

STAMP
 LICENSED ARCHITECT
 Jeffrey W. Olson
 No. C-337613
 REL. 03/31/11

SHEET TITLE
 PARTIAL SLAB PLAN - LEVEL 1
 SCENE 2

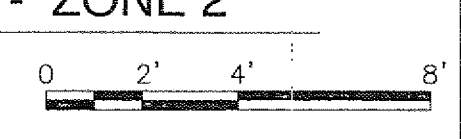
DRAWN BY: Author
 PROJECT #: 200725.000
 SHEET NUMBER
A2512



U.C.S.D.
 PRELIMINARY DRAWINGS
 PROGRESS DRAWINGS
 REVIEW DRAWINGS
 CONSTRUCTION DRAWINGS

1
 A25101 A2512
 1/4" = 1'-0"

LEVEL ONE DATUM: 374'



1:05:00 PM 11/14/09 AM
 C:\proj\Projects\200725_SDCRW_Jesse.Dworkin

Warning: It is a violation of the law for any person, unless acting under the direction of a licensed architect, to alter an item in any way. If an item in this document is altered, the altering architect, if other than the architect of record, shall affix to the item his seal and the notation "altered" followed by his signature and the date of such alteration, and the specific description of the alteration.