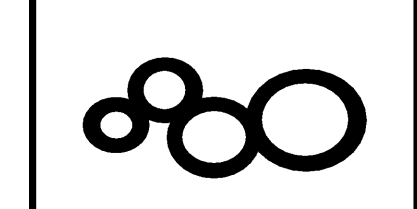


ISSUED FOR	DATE
BID PK #1 100 CD	10.08.08
50% PROGRESS	10.24.08
BID PK #1 80 CD	12.01.08
BID PK #1 100 CD	02.19.09
BID PK #2 100 CD	03.29.09
100% CD	05.08.09
CD-3	01.07.10
CD-4	04.15.10
ASI 023	10.20.10
ASI 028	12.15.10
ASI 028	01.21.11
ASI 030	05.10.11

**SANFORD CONSORTIUM FOR REGENERATIVE MEDICINE**  
 2880 TORREY PINES SCENIC DRIVE  
 LA JOLLA, CALIFORNIA 92037



CONSULTANT  
 Linkford/Phelps Consortium LLC  
 10000 Wilshire Blvd, Suite 1000, Los Angeles, CA 90024  
 (310) 204-1000

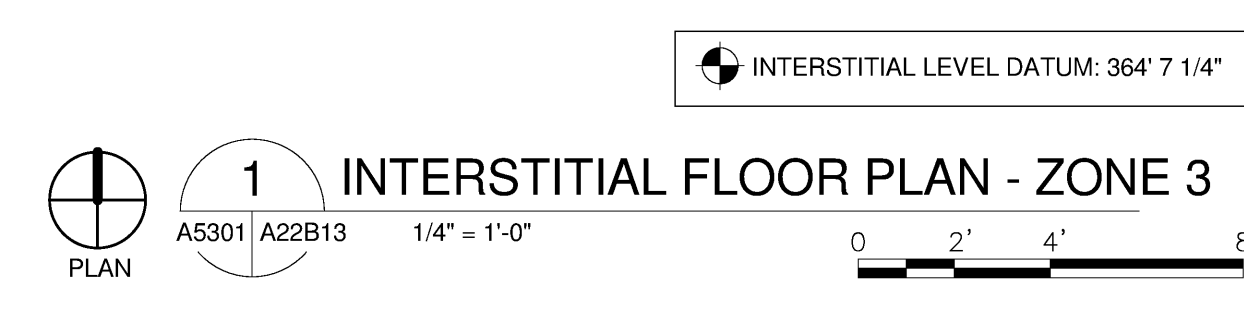
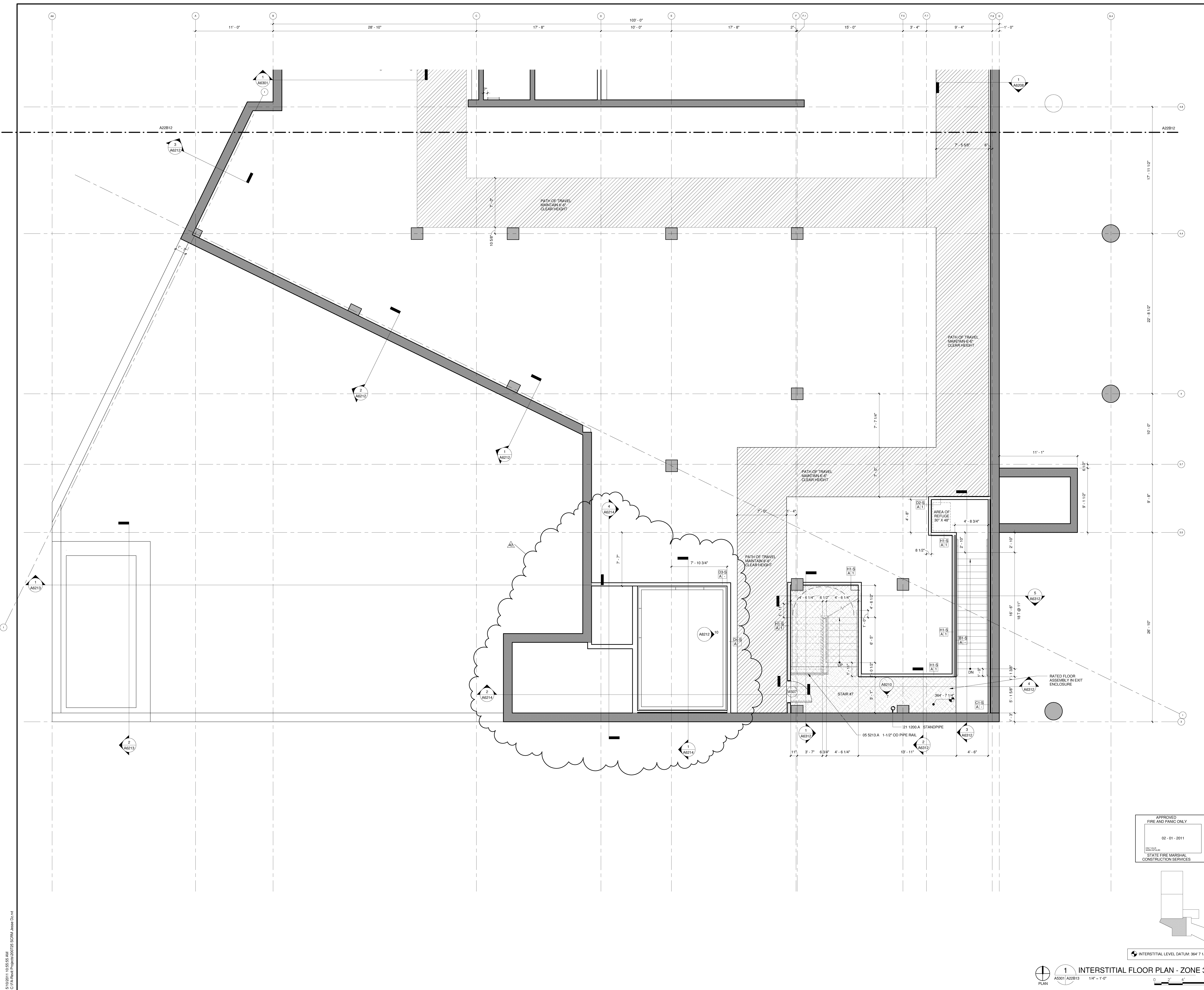
FENTRESS ARCHITECTS  
 425 Wilshire Blvd, Suite 1000, Los Angeles, CA 90024  
 (310) 204-1000

DAVIS PARTNERS  
 20011 Park Avenue, Suite 1000, Park Ridge, IL 60068  
 (708) 399-1000

STAMP  
 APPROVED  
 FIRE AND PANIC ONLY  
 02-01-2011  
 STATE FIRE MARSHAL  
 CONSTRUCTION SERVICES

SHEET NAME  
 PARTIAL FLOOR PLAN -  
 INTERSTITIAL ZONE 3

DRAWN BY: Author  
 PROJECT #: 200725.000  
 SHEET NUMBER  
**A22B13**



5/10/2011 10:55:55 AM  
 C:\P\A\Rev\Proj\200725\SCRM\A22B13.dwg

Warning: It is a violation of the law for any person, unless acting under the direction of a licensed architect, to alter an item in any way. If an item in this document is altered, the altering architect, if other than the architect of record, shall affix to the item his seal and the notation "altered by" followed by his signature and the date of such alteration, and the specific description of the alteration.