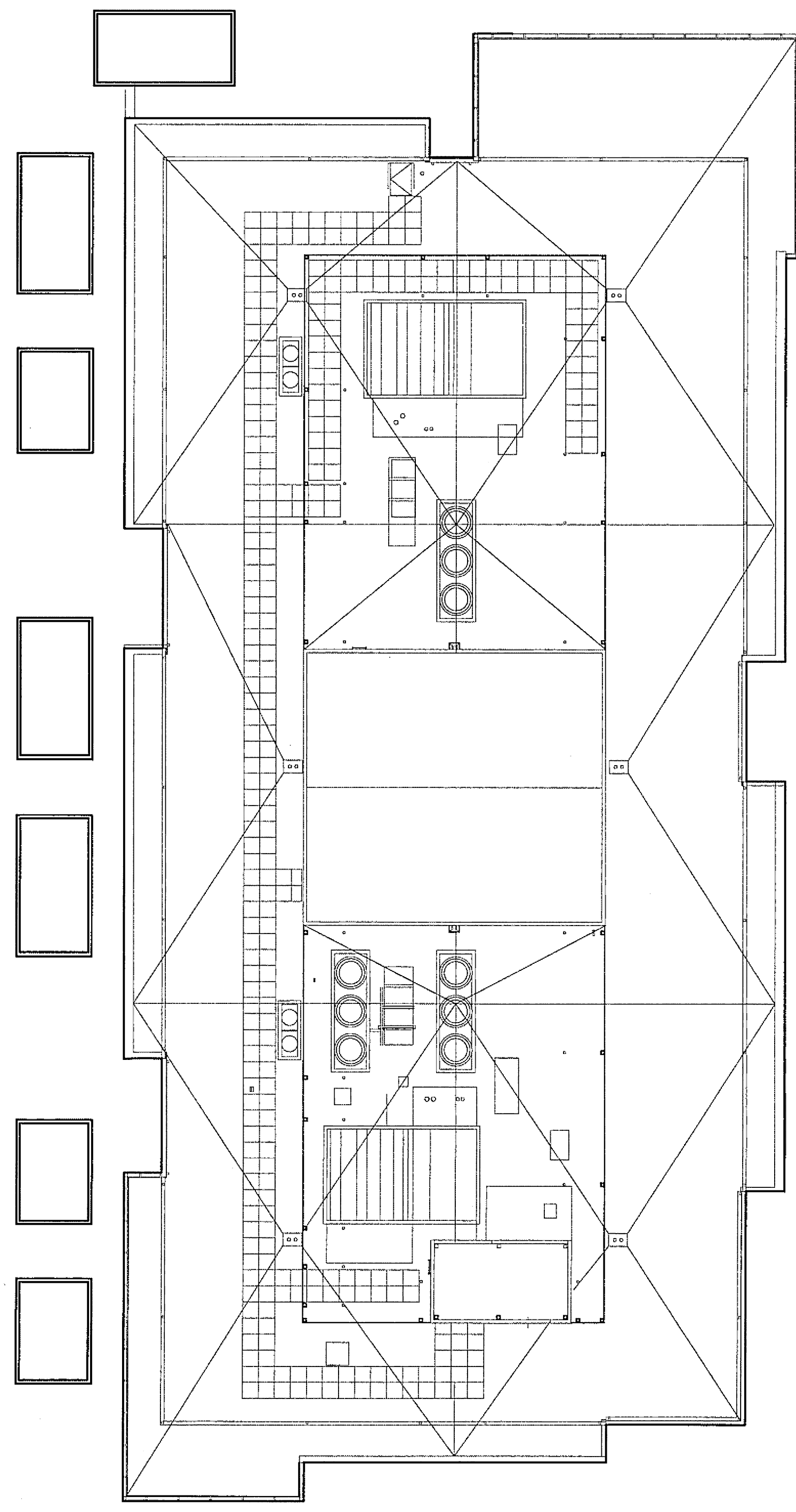
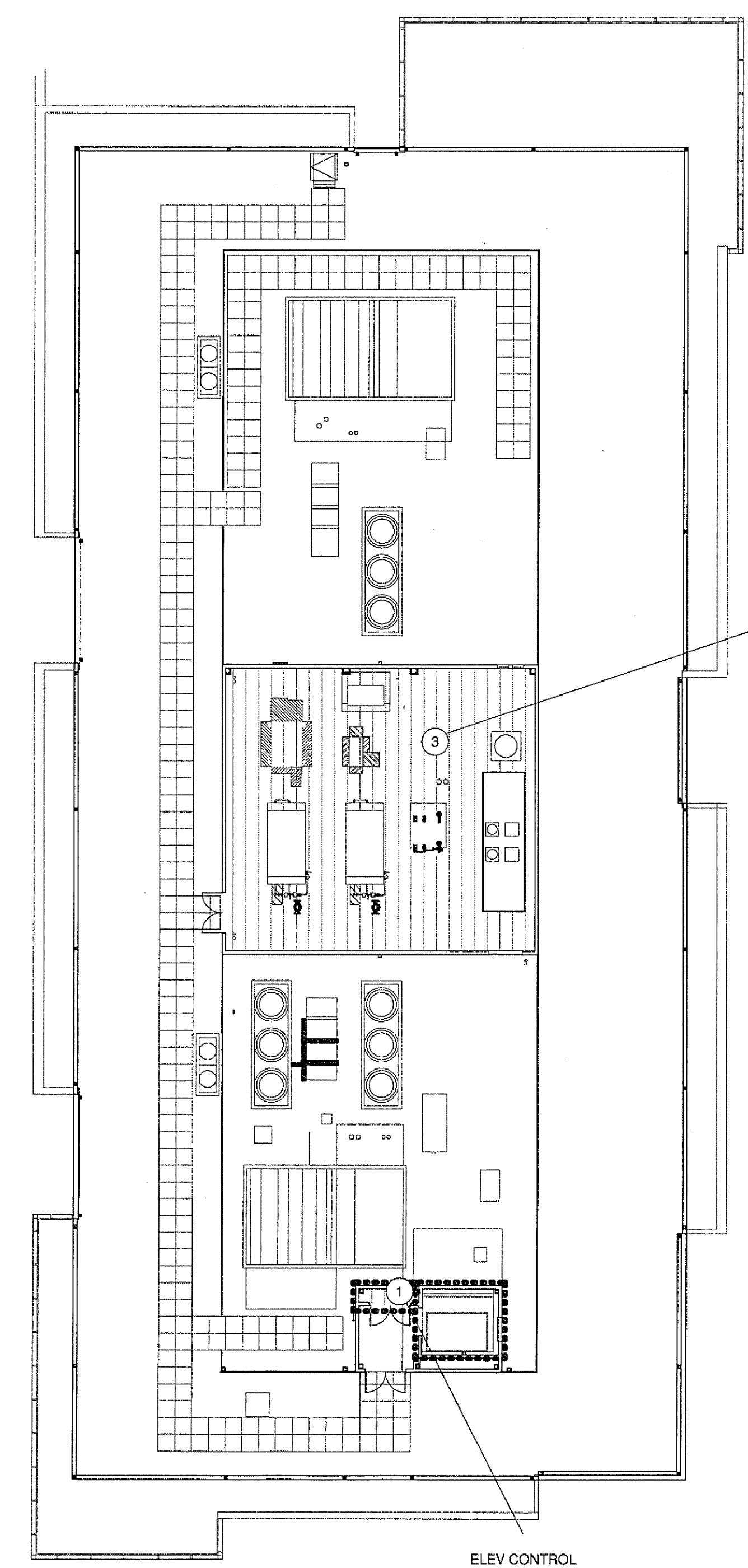


ISSUED FOR	DATE
BID PK #1 100 CD	02-18-09
BID PK #2 100 CD	03-26-09
100% CD	05-28-09
CD-3	01-07-10
CD-4	01-27-10
CD-4	04-15-10



**2 ROOF PLAN - CODE**  
AS101 A0014 1/16" = 1'-0"



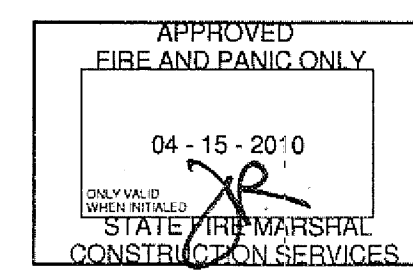
**1 PENTHOUSE PLAN - CODE**  
AS101 A0014 1/16" = 1'-0"

MECHANICAL  
STORMECH  
OLF: 300 SF  
1934 SF

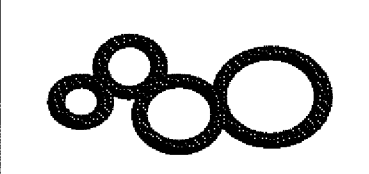
ELEV CONTROL  
STORMECH  
OLF: 300 SF  
18 SF

ASSEMBLY	LEGEND
BUSINESS	1 HOUR FIRE RATED
CIRCULATION	2 HOUR FIRE RATED
KITCHEN	TRAVEL DISTANCE
STORMECH	MAX. TRAVEL DISTANCE
STORAGE	ASSUMED PROPERTY LINE
	PH PANIC HARDWARE
	FE FIRE EXTINGUISHER
	ROOM OCCUPANT LOAD
	EXIT SIGN

DATE	U.C.S.D.
11/1/10	PRELIMINARY DRAWINGS
	PROGRESS DRAWINGS
	REVIEW DRAWINGS
	CONSTRUCTION DRAWINGS

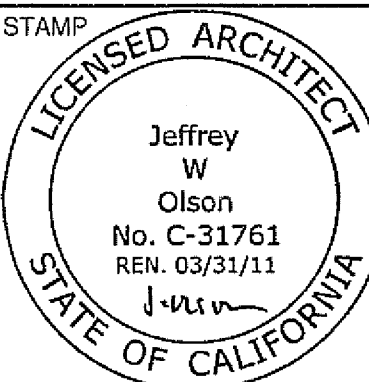


**SANFORD CONSORTIUM FOR REGENERATIVE MEDICINE**  
2880 TORREY PINES SCENIC DRIVE  
LA JOLLA, CALIFORNIA 92037



CONSULTANT  
Lankford/Phelps Consortium LLC  
225 West 10th Street, Suite 100  
San Francisco, CA 94103

FENTRESS ARCHITECTS  
401 Broadway, Suite 800  
San Francisco, CA 94111  
DAVIS DAVIS ARCHITECTS  
2000 Franklin Avenue, Suite 100  
San Francisco, CA 94115



SHEET NAME  
CODE PLANS  
DRAWN BY: Author  
PROJECT #: 200725.000  
SHEET NUMBER  
**A0014**