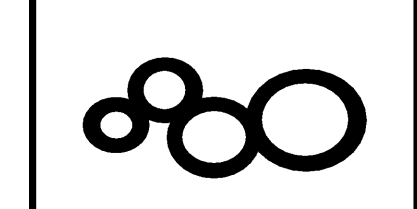


ISSUED FOR	DATE
BID PK #1 100 CD	10.08.08
50% PROGRESS	10.24.08
BID PK #1 80 CD	12.01.08
BID PK #1 100 CD	02.18.09
BID PK #2 100 CD	03.29.09
100% CD	05.08.09
CD-3	01.07.10
COB 001	02.28.10
COB 002	02.26.10
CD-4	04.15.10
ASI 003	12.15.10
ASI 002	01.21.11

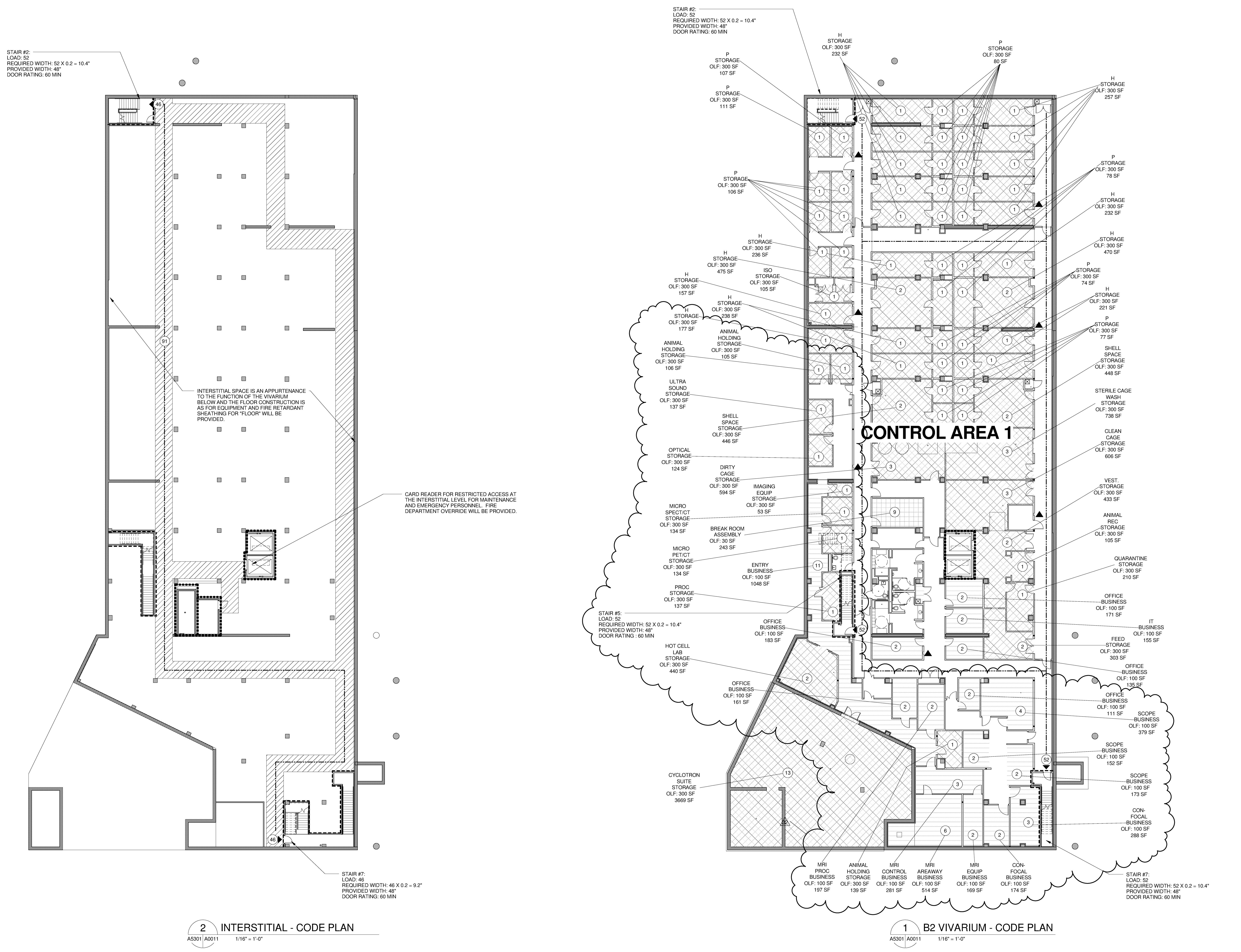
SANFORD CONSORTIUM FOR REGENERATIVE MEDICINE
 2880 TORREY PINES SCENIC DRIVE
 LA JOLLA, CALIFORNIA 92037



CONSULTANT
Larkford Phelps Consortium LLC
 9500 Wilshire Blvd., Suite 1000, Beverly Hills, CA 90212
 310.272.1800

FENTRESS ARCHITECTS
 425 Westwood Blvd., Suite 200, Westwood, CA 90231
 310.272.1800

STAMP
 SHEET NAME
 CODE PLANS
 DRAWN BY: Author
 PROJECT #: 200725.000
 SHEET NUMBER
A0011



2 INTERSTITIAL - CODE PLAN
 AS301/A0011 1/16" = 1'-0"

1 B2 VIVARIUM - CODE PLAN
 AS301/A0011 1/16" = 1'-0"

= FIRE EXTINGUISHER CABINET
 = 3A/10B/C RATING
 = 75 FEET MAXIMUM TRAVEL DISTANCE TO EXTINGUISHER

LEGEND	
	ASSEMBLY
	BUSINESS
	KITCHEN
	STOR-MECH
	STORAGE
	1 HOUR FIRE RATED
	2 HOUR FIRE RATED
	TRAVEL DISTANCE
	MAX. TRAVEL DISTANCE
	ASSUMED PROPERTY LINE
	PANIC HARDWARE
	FIRE EXTINGUISHER
	ROOM OCCUPANT LOAD
	EXIT SIGN

1/15/2011 2:16:45 PM
 C:\A\Revit\Proj\200725_SCRM_Mesh.DWG

Warning: It is a violation of the law for any person, unless acting under the direction of a licensed architect, to alter an item in any way. If an item in this document is altered, the altering architect, if other than the architect of record, shall affix to the item his seal and the notation "altered by" followed by his signature and the date of such alteration, and the specific description of the alteration.