

DESIGN KEY NOTES

- 1 PROVIDE THREE-WAY CONTROL VALVE FOR CV BOX REHEAT COIL.
- 2 STEAM TRAP.
- 3 LAMINARFLOW DIFFUSER PROVIDE 99.97% HEPA FILTER.
- 4 32x12 RETURN AIR DUCT IN WALL WITH 28x18 RETURN AIR GRILLE @ 6" AFF.
- 5 20x10 EXHAUST AIR DUCT IN WALL WITH 18x18 EA GRILLE @ 6" AFF.
- 6 DDC CONTROL PANEL (PER CONTRACT & PROJECT REQUIREMENTS)
- 7 ALUMINUM DUCTWORK & AIR OUTLET/INLET IN MRI AREA
- 8 AIR PRESSURE MONITOR ALARM PANEL FOR ISOLATION ROOMS.
- 9 MRI ROOM: THERMOSTAT AND HUMIDISTAT SENSOR SHALL BE MOUNTED INSIDE THE EXHAUST AIR DUCT. TEMPERATURE AND HUMIDITY VIEW PANEL SHALL BE MOUNTED @ THE NURSE WORK STATION.
- 10 WALL MOUNTED OXYGEN SENSOR AND ALARM FOR MRI ROOM. INSTALL OXYGEN MONITOR TO AN-120-VOLT OUTLET.
- 11 SEE CHILLED WATER PIPING DIAGRAM ON SHEET M8.10
- 12 1" DRAIN LINE WITH INSULATION TO FLOOR SINK
- 13 1" DRAIN LINE WITH INSULATION TO LABORATORY TAILPIECE

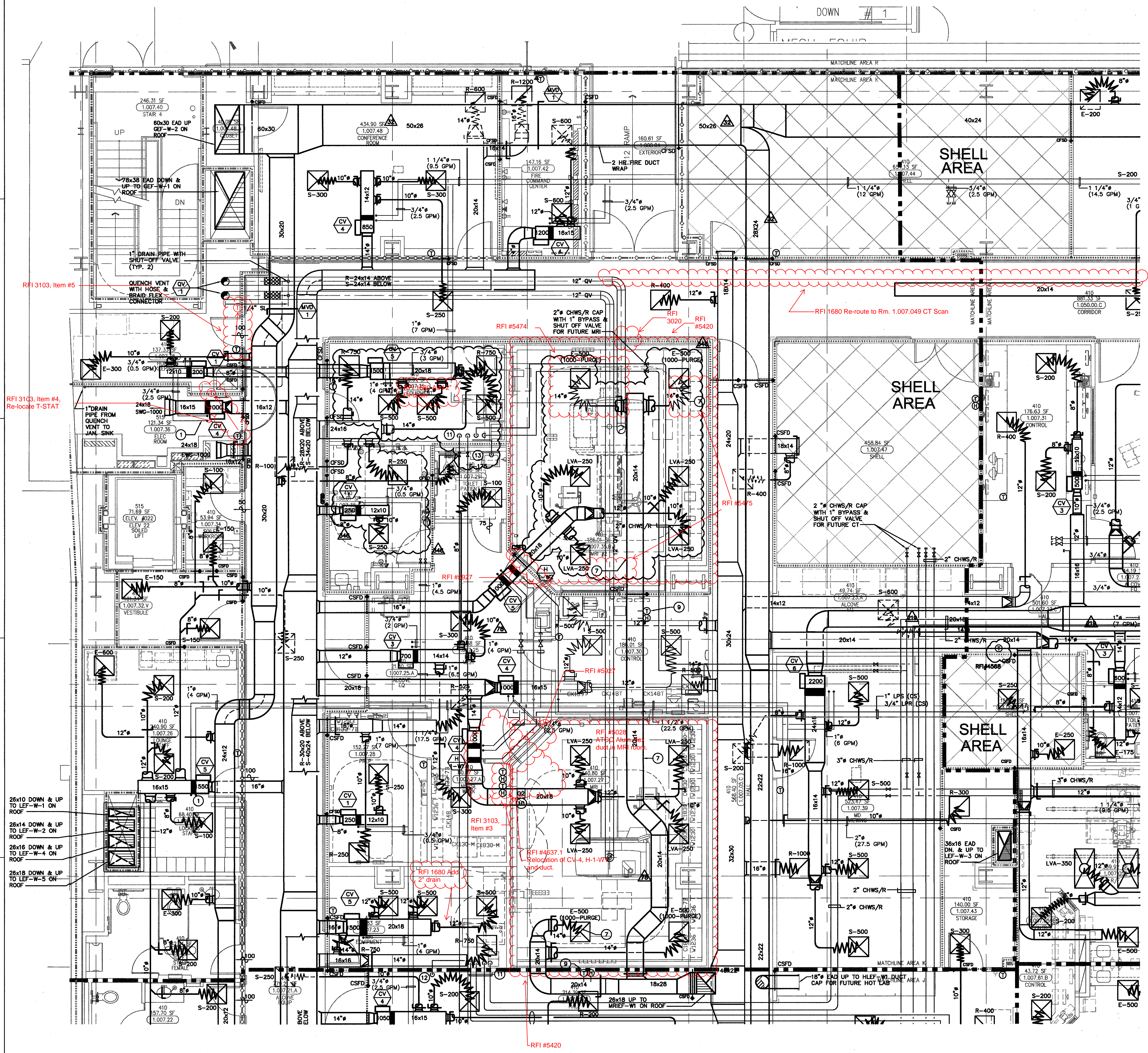
**FKP Architects**  
ARCHITECT OF RECORD

\*Architect of Record signature line only; this drawing was not prepared under the direct supervision of the Architect of Record. The direct responsibility for preparation of this sheet lies with its corresponding professional stamp and signature. The signature of the Architect of Record in general responsible charge of the project is provided as required by Title 24, Part 1, Section 7-112 (a).

ARCHITECT - PAUL C. GLORIO  
CONSULTANT

T M A D TAYLOR & GAINES  
STRUCTURAL  
MECHANICAL  
ELECTRICAL  
CIVIL

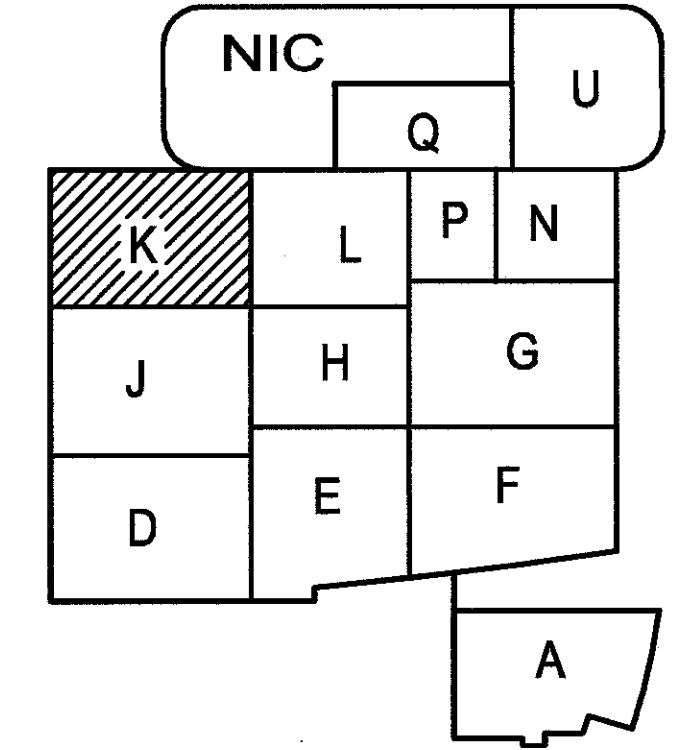
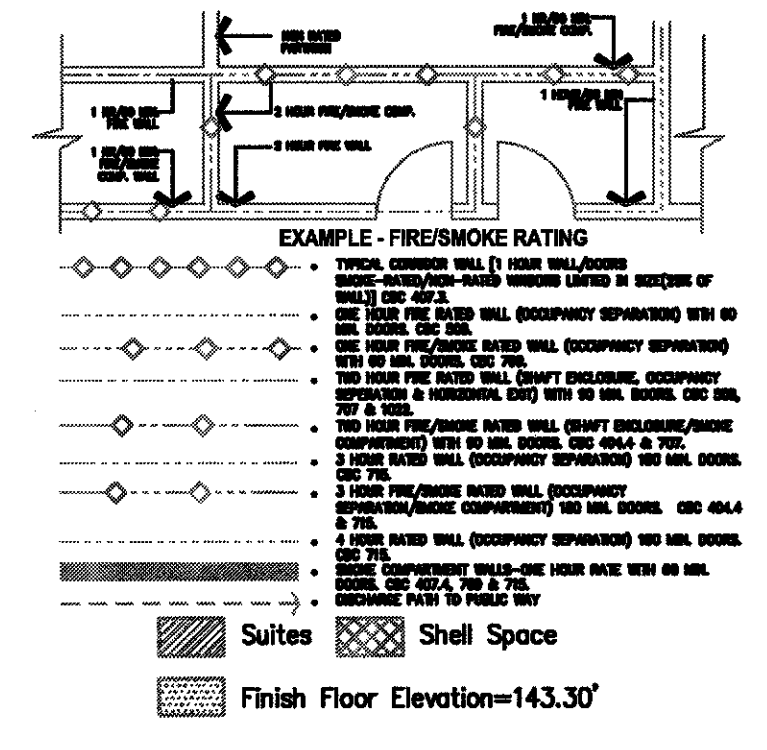
100 South Anaheim Boulevard, Suite 150  
Anaheim, California 92805  
Phone: 714.490.5555 Fax: 714.490.5560  
Project No. 2305-163-07



RFI #3103, Item #4, Re-locate T-STAT

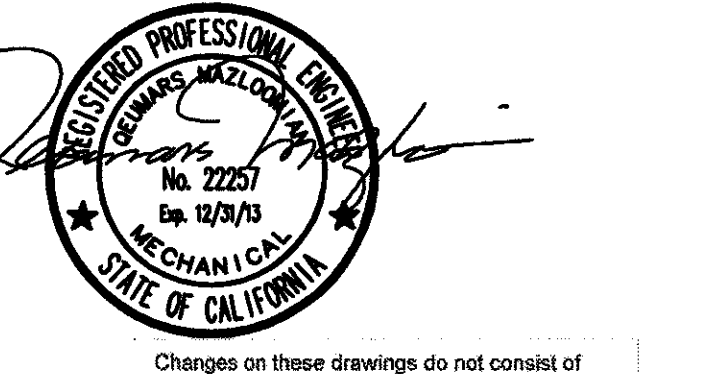
26x10 DOWN & UP TO LEF-W-1 ON ROOF  
26x14 DOWN & UP TO LEF-W-2 ON ROOF  
26x16 DOWN & UP TO LEF-W-4 ON ROOF  
26x18 DOWN & UP TO LEF-W-5 ON ROOF

LEVEL 1 MECHANICAL PLAN AREA - K



(A) Key Plan

KEY PLAN



REVISIONS

06/12/2010	CHANGE ORDER #82
10/10/2010	CHANGE ORDER #89
11/08/2010	CHANGE ORDER #99
01/24/2011	CHANGE ORDER #139
04/15/2011	CHANGE ORDER #170
01/23/2012	CHANGE ORDER #272

APPROVAL  
PAD 2012-D1947  
CHANGES TO THESE DRAWINGS DO NOT CONSTITUTE MATERIAL ALTERATIONS TO THE ORIGINAL DESIGN AND SHALL BE APPROVED BY THE ARCHITECT OF RECORD.

PROJECT NAME  
**CHILDREN'S HOSPITAL OF ORANGE COUNTY**  
455 S. Main St.  
Orange, CA 92668-3874



PROJECT NUMBER  
**12011.00**  
Increment #7

OSHPD - PROJECT NUMBER  
**IL 072072-30**

ISSUE  
**OSHPD PERMIT**

DATE  
**01/27/2010**

SCALE  
**1/4"=1'-0"**

DRAWING TITLE  
**LEVEL 1 MECHANICAL PLAN AREA - K**

DRAWING NUMBER  
**M3.1K**