

WELCOME TO
THE JULIA AND GEORGE ARGYROS
Emergency Department

Level 1 - Location 001 & 001.1
NOTE: THESE LOCATIONS RECEIVE WHITE DONOR LETTERFORMS

GRACIOUSLY GIVEN BY
Glass Slipper Guild

Level 3 - Location 023

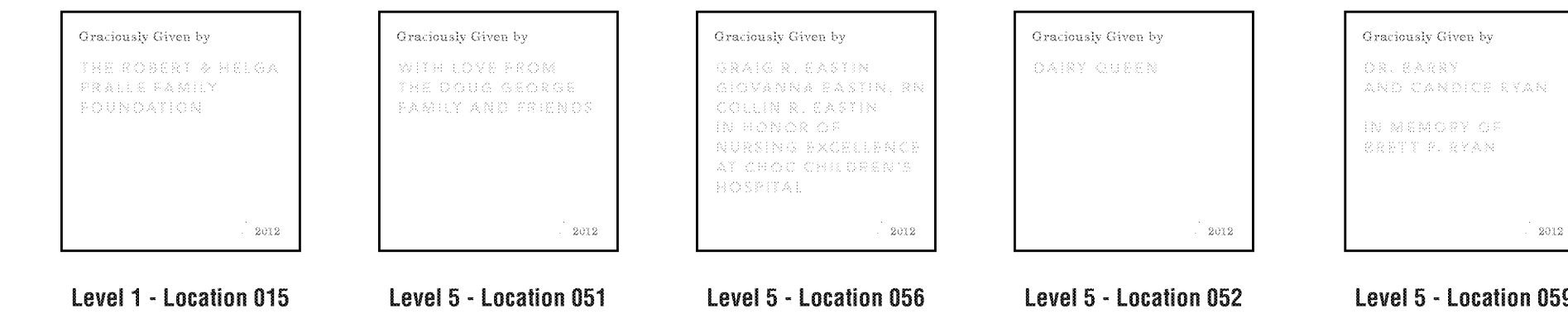
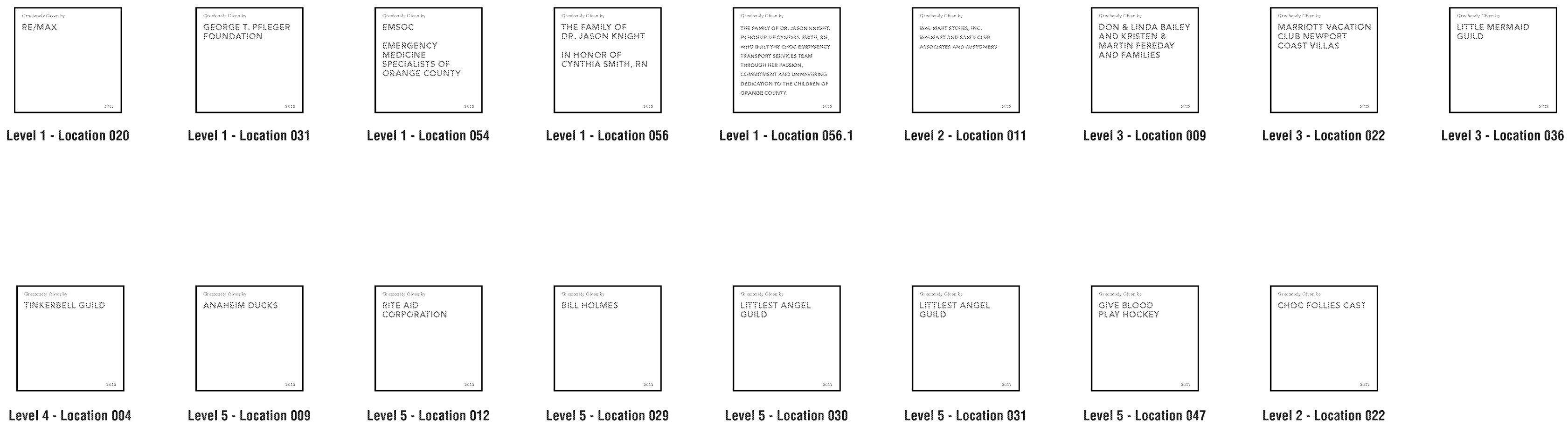
COSTCO WHOLESALE MEMBERS,
EMPLOYEES AND VENDORS
Emergency Department Reception

Level 1 - Location 002

MIRACLES FOR KIDS
Family Resource Center

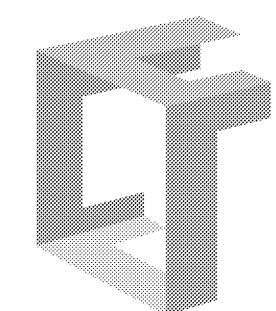
Level 2 - Location 007

1 Donor Identification: Type A
Scale: 1 1/2" = 1'-0"



3 Donor Area Plaque Recognition: Type C
Scale: 1 1/2" = 1'-0"

2 Donor Area Plaque Recognition: Type B
Scale: 1 1/2" = 1'-0"



formation
2203 Timberloch, Suite 128
The Woodlands, TX 77380
281.719.8026 tel

© 2011 formation LLC.
All rights reserved
This document is the product and exclusive property of Formation LLC. Neither the document nor the information it contains may be copied, disclosed to others or used in connection with any work or project other than the specific project for which they have been prepared and developed without the written consent of Formation LLC.

Project Name
CHOC South Tower
Foundation Donor Graphics
Part 2
Project Code
12407001

Issues/Revisions
09.07.12 ASI #256

Fabrication Documentation
Details shown are suggested fabrication methods to achieve an overall visual aesthetic. Fabricators may offer alternative fabrication techniques which achieve the same visual intent. No visual changes will be acceptable.

Page Title / Element Type
Donor Part 2 Layouts

RECEIVED
Sep 11 2012
McCARTHY

Sheet Number

AGC59.3