

FKP Architects

ARCHITECT OF RECORD
Paul C. Gloriot



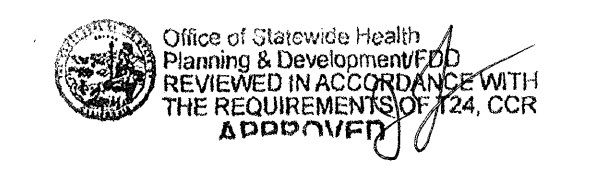
Changes on these drawings do not consist of mutually offset changes to approved drawings and don't require a change order.
OSHPD review ACO
OSHPD review ALSD
OSHPD review DSE

REVISIONS

44	05/28/10	ASI #08
28	07/12/10	CO #28
34A	09/05/11	CO#266
29A	12/05/11	CO#303

OSHPD/IFDD-Field Review Tracking

Project	12011.00	2011-02-29
Phase	AC	2/29/11
AC	AC	2/29/11
Architectural	AC	D X
Mechanical	AC	D X
Electrical	AC	D X
Structural	AC	D X
Fire/Life Safety	AC	D X



CHANGE ORDER 303
INSTRUCTION BULLETIN DEFERRED APPROVAL # 100ENDUM

PROJECT NAME
CHILDREN'S HOSPITAL OF ORANGE COUNTY
455 S. Main St.
Orange, CA 92668-3874

TOWER II



PROJECT NUMBER
12011.00
Increment #7

OSHPD - PROJECT NUMBER
IL 072072-30

ISSUE
OSHPD PERMIT

DATE
01/27/2010

SCALE
1/8" = 1' - 0"

DRAWING TITLE
LEVEL 1 REFLECTED CEILING PLAN AREA - A

DRAWING NUMBER
A4.1A

- LASER - IN USE LIGHT
- EXIT LIGHT FIXTURE
- RECESSED COMPACT FLUORESCENT DOWN LIGHT
- RECESSED COMPACT FLUORESCENT DIRECTIONAL SPOT LIGHT
- WALL MOUNTED LIGHT FIXTURE
- RECESSED COMPACT FLUORESCENT DOWN LIGHT WITH DIMMER
- RECESSED EXAM LIGHT, W/ WALL MOUNTED CONTROLS
- LOUIE LIGHTING, SD-888 RECESSED LIGHT
- RECESSED FIXTURE, P-8900, PRUDENTIAL LIGHTING
- LOUIS POULSEN, COLLAGE PENDANT
- PENDANT FIXTURE, QUEENY DOWN II, BRUCK
- BOYD, 9955 ARCHETYPE PENDANT, DIMMING SATIN NICKEL
- BOYD, 10217 CATACOGS PENDANT (30"), DIMMING SATIN NICKEL
- P5
- CORELITE, VERTECH 218 4' SUSPENDED DIRECT/INDIRECT LINEAR FIXTURE
- BOA CALO SWING SPOT, BRUCK, WITH V/A TRACK, BRUCK
- BRUCK LEDRA DISPLAY TRACK AND SPOT LIGHT
- COLOR KINETICS, ICOLOR FLEX SL, TRACK MOUNTING
- COLOR KINETICS, ICOLOR FLEX SL, STRING LIGHT
- INDIRECT COVE FIXTURE, P-59, PRUDENTIAL LIGHTING
- PERIMETER WALL WASHER W/ ACRYLIC LENS, FOCUS 1, FOCAL POINT
- LED COVE LIGHT
- FLUORESCENT COVE LIGHT
- FLUORESCENT WITH FLUSH LENS, AVENUE b, FOCAL POINT
- EUREKA C49169 LIGHT FIXTURE
- CEILING MOUNTED NURSE CALL INDICATOR
- 4" X 2' FLUORESCENT WALL MOUNTED LIGHT FIXTURE
- RECESSED FLUORESCENT LIGHT FIXTURE
- 1' X 4' FLUORESCENT WALL MOUNTED LIGHT FIXTURE
- 1' X 4' FLUORESCENT UTILITY LIGHT FIXTURE
- SURFACE MOUNTED LED LIGHT
- 2' X 4' FLUORESCENT LIGHT FIXTURE WITH PARABOLIC LENS
- 2' X 4' FLUORESCENT LIGHT FIXTURE DIRECT/INDIRECT
- 2' X 4' FLUORESCENT LIGHT FIXTURE WITH PRISMATIC LENS
- MULTI FUNCTION PATIENT LIGHT FIXTURE
- SQUARE MECHANICAL GRILLES
- LINEAR MECHANICAL GRILLES
- PLASTER CEILING
- METAL PANEL SOFFIT
- GYPSUM BOARD CEILING
- OVERHEAD CABLE TRAY- SEE T5.13A FOR DETAIL
- 2' X 2' SUSPENDED ACOUSTICAL TILE

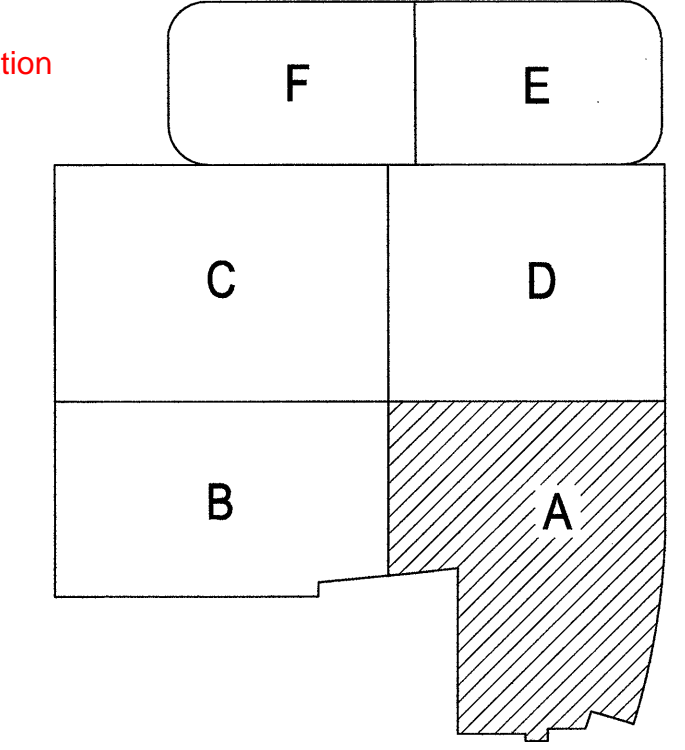
C1 Legend

- A. REFER TO "FINISH SCHEDULE" FOR FURTHER DEFINITION OF CEILING MATERIALS AND FINISHES.
- B. CEILING HEIGHT WILL TYPICALLY BE (9'-0") UNLESS OTHERWISE NOTED ON THE REFLECTED CEILING PLAN.
- C. LOCATE ALL CEILING MOUNTED SMOKE DETECTORS AND SPEAKERS IN THE CENTER OF FULL PANELS AT LAY-IN CEILINGS.
- D. LOCATE ALL SPRINKLER HEADS IN THE CENTER OF FULL PANELS AT LAY-IN CEILINGS. AT GYPSUM BOARD CEILINGS, SYMMETRICALLY SPACE HEADS AND CENTER ON LIGHT ROWS WHERE AREA LIMITATIONS PERMIT.
- E. REFER TO MEP DOCUMENTS FOR LOCATIONS OF CEILING ACCESS PANELS. UNLESS NOTED OR DETAILED OTHERWISE ACCESS PANELS IN TOILETS AND BACK OF HOUSE SPACES WITH DRYWALL OR PLASTER CEILINGS ARE TO BE PAINTED METAL. PLASTER OR DRYWALL CEILINGS WITH ACCESS PANELS IN AUTOPIST AND BODY HOLDING AREAS ARE TO BE STAINLESS STEEL.
- F. FOR SEISMIC BRACING AND ANCHORAGE REQUIREMENTS FOR SUSPENDED ACOUSTICAL CEILINGS, SEE SHEET A11.10.
- G. FOR SEISMIC BRACING AND ANCHORAGE REQUIREMENTS FOR SUSPENDED GYPSUM BOARD CEILINGS, SEE SHEET A11.10.
- H. GYPSUM BOARD FURRODOWN HEADERS WILL NOT BE LOWER THAN 8' A.F.F.
- I. ALL CEILING MOUNTED ITEMS WITH EQUIPMENT TAGS IDENTIFIED ON EQUIPMENT SERIES SHEETS ARE CROSSED REFERENCE TO STRUCTURAL SUPPORT DETAILS VIA MATRIX SHOWN ON EQUIPMENT DRAWINGS.
- J. FOR ALL LAY IN CEILING PANELS ARRANGE CEILINGS TO NOT HAVE LESS THAN 1/2" CEILING TILE UNLESS OTHERWISE NOTED.
- K. PROVIDE 2" WIDE TRIM AT ALL PERIMETER OF ACOUSTICAL CEILING GRID SYSTEM TO MEET SEISMIC REQUIREMENTS.
- L. IN THE EVENT OF A CONFLICT BETWEEN REFLECTED CEILING PLANS AND FINISH SCHEDULES, THE REQUIREMENTS OF TABLE 1224.1 CBC 2007 PART 2 SHALL GOVERN.
- M. FOR Q.R. DIFFUSER ARRAY, PROVIDE 2x4 SUSPENSION SYS. W/ GASKETS (GORDON INC. - GC-15); HOLD DOWN CLIPS; ALUMINUM PANELS (USS; PANZ 2x4 (SMOOTH) SQUARE EDGE LAY-IN.

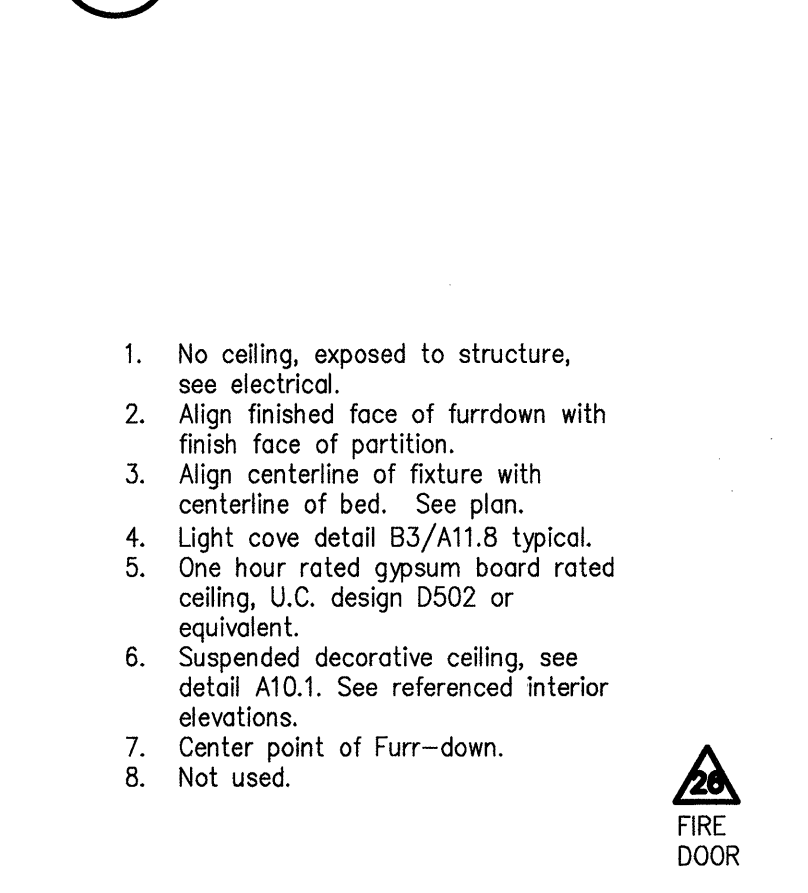
B1 General Notes

RFI 4014
See revised ceiling layout per access panel coordination.

RFI #5473
RCP Coordination level 1.



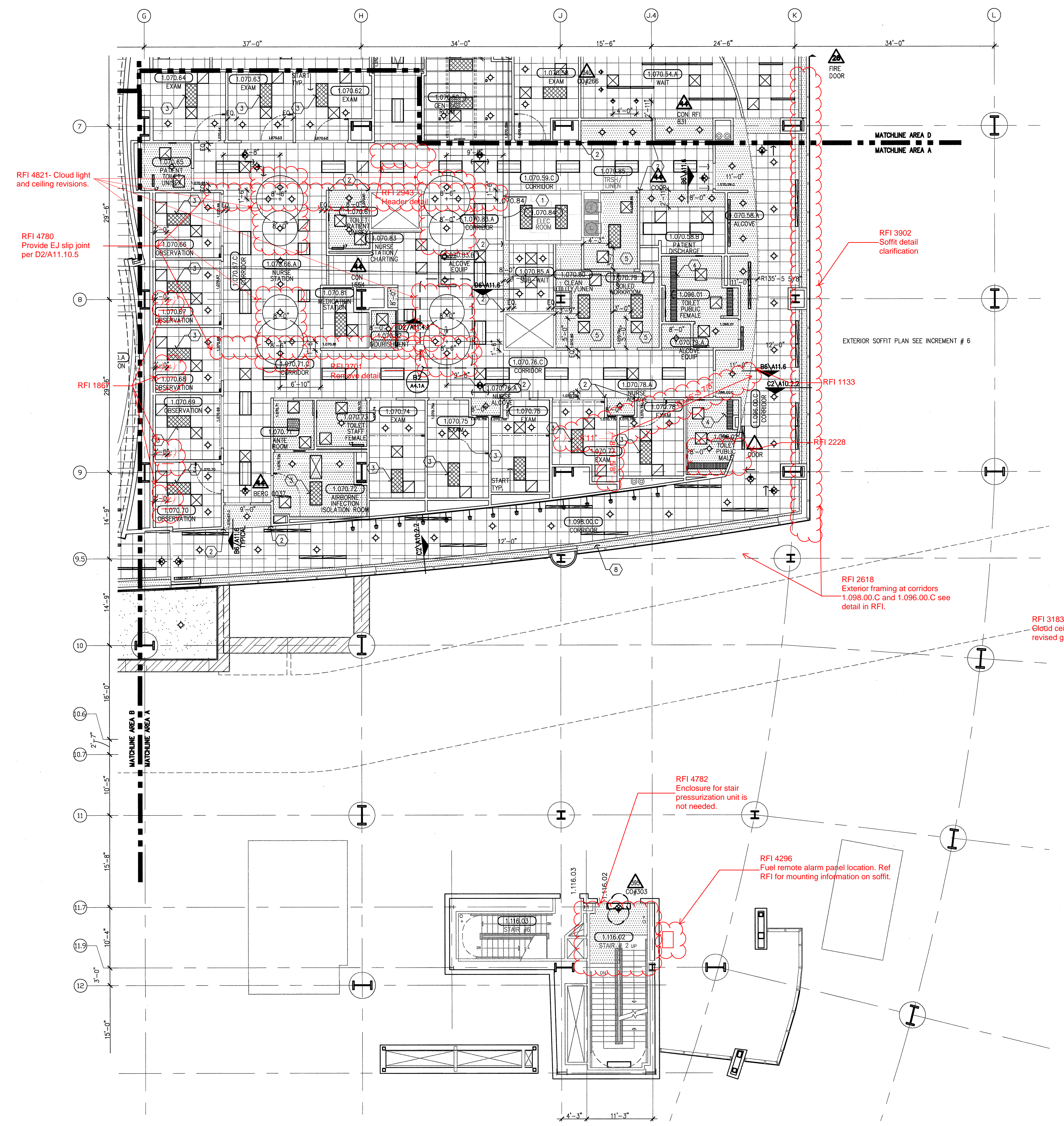
B2 ENLARGED PLAN



A2 Notes To Sheet

1. No ceiling, exposed to structure, see electrical.
2. Align finished face of furrdown with finish face of partition.
3. Align centerline of fixture with centerline of bed. See plan.
4. Light cove detail B3/A11.8 typical.
5. One hour rated gypsum board rated ceiling, U.C. design D502 or equivalent.
6. Suspended decorative ceiling, see detail A10.1. See referenced interior elevations.
7. Center point of Furr-down.
8. Not used.

A1 Key Plan



A6 AREA A

1/8" = 1' - 0"

N:\06000\06102 CHOC TOWER 2 SHELL BUILDING\PROJECT INCREMENTS\NCR_007_TENANT IMPROVEMENT\OSHPD PERMIT (CONSTRUCTION DOCUMENTS)\0602_COV_..._V4.rvt
 11/27/2011
 ROBERT