

FKP Architects
ARCHITECTS

ARCHITECT OF RECORD
Paul C. Gloriod



Changes on these drawings do not consist of materially altered changes to approved drawings and don't require a change order.
OSHPD review ACO
OSHPD review FLSO
OSHPD review DSE

1. Pneumatic tube station.
2. Low partition, 48" A.F.F.
3. 2" Plywood
4. Pipe Handrail. Paint approved CHOC Blue. See det. A6/A11.3 for detail.
5. Concrete slab landing- medium broom surface texture finish. See structural drawings for rebar.
6. Approved Wall/ Ceiling Expansion Joint System.
7. Work counters at 30" A.F.F.
8. Provide one layer of security mesh in wall between stud and gypsum board. See notes.
9. Scheduled equipment. See equipment.
10. Existing column.
11. Edge of slab.
12. Ramp up from sidewalk. Transverse broomed (medium) surface texture. See structural drawings for rebar.
13. Existing partition to remain.
14. Existing column and partition field verify exact location repair finish as needed. - Paint.
15. Existing floor slab to remain- patch, repair, prepare and apply approved floor leveling concrete mixture- screed to fall as shown.
16. Dutch door. See D5/A11.4.1 for detail.
17. Approved handfree intercom with didler system. Mounted 48" A.F.F.
18. Demo part of existing wall. Install new wall per schedule.

D1 NOTES TO SHEET

- A. Information shown or referenced on enlarged and/or 1/4" scale drawings will generally not be shown on the smaller scale drawings.
- B. Partition types are scheduled on plans by number. See the "General Notes to Partition Types" on B2/A11.3 and Partition Types on Sheet A11.3, A11.3.1, and A11.3.2 for the definition of partition type references.
- C. Field coordinate all field routed pipe, conduit runs, etc., with locations of recessed accessories and equipment. In the event of a conflict, accessory locations take precedence.
- D. Close all joints between plumbing fixtures/accessories and dissimilar materials w/sealant (i.e. between sinks and countertops, toilet fixtures and accessories to wall, etc.)
- E. Cabinet numbers noted on enlarged plans refer to Cabinet component numbers, fixtures, accessories, etc. that are defined or elevated on Sheet A9.0 unless specific detail references are keyed.
- F. Plan dimensions - refer to B2/A11.3 (General Notes). See Detail D6/A11.7.
- G. For vertical mounting heights of typical toilet stall accessories, see Detail A4/A11.7.
- H. For vertical mounting heights of accessible toilet stall accessories, see Detail A5/A11.7.
- I. For vertical mounting heights of accessible restroom accessories, see Detail A5/A11.7.
- J. For vertical mounting heights of typical restroom accessories, see Detail B6/A11.7.
- K. For vertical mounting heights of accessible restroom accessories, see Detail A5/A11.7.
- L. For equipment not identified on plan, see Equipment drawings and workbook-Increment #7, Vol. 2E.
- M. For partial enlarged plan of janitor closets, see Detail A3/A11.7.
- N. Public/handicapped restroom graphics will be furnished and installed by the Owner's graphics supplier.
- O. Standard equipment wall mounting heights, see detail A2/A11.9.
- P. Medical equipment wall mounting heights, see details A4/A11.9, D3/A11.9 & Q0.02-Increment #7, Vol. 2E.
- Q. Fire Protection equipment wall mounting heights, see detail D2/A11.9.
- R. Communication equipment wall mounting heights, see detail A3/A11.9.
- S. Equipment mounting heights of Countertops, see detail D3/A11.9.
- T. Equipment mounting heights of Desks, see detail A4/A11.9.
- U. A minimum head clearance of 8'-0" must be maintained at all points in stairways including stair and landing framing.
- V. For all bonded in equipment not identified, refer to EQ drawing series-Increment #7, Vol. 2E and Equipment workbook. Specific items requiring structural support are cross referenced to structural support details via matrix shown on the Equipment drawing-Increment #7, Vol. 2F.
- W. All elevator hoist way entrance frames to have an embossed stainless steel graphic plaque with the floor landing number and Standard Braille markings for the blind. Conform to governing Accessibility codes and standards.
- X. All stair floor landings to receive stencil painted, semi-gloss enamel floor landing numerals 12" high adjacent to the door at 5'-0" AFF in a contrasting color to the scheduled wall color unless a graphic plaque is specifically detailed or noted.
- Y. Elevator Equipment Wall Mounting Heights, see detail A6/A11.9 and B3/A11.9.
- Z. Doors, Frames, Sillings and Windows: (See Door Schedule). See A11 sheet series.
- AA. Provide wall backing/backing for items weighing 20lbs or less. See A6/A11.3.1.
- BB. For personal effects storage unit types and sizes see A4/A11.5.
- CC. For typical equipment backing support, see A4/S1.1-Increment #5.
- DD. For boundaries of alternates and phasing, see the AP drawing series.
- EE. Provide 3" grommet, unless otherwise noted at 3'-0" O.C. maximum, field located at all electrical components of Nurses stations and Reception desks.
- FF. For vertical mounting heights of service accessories, see Detail A3/A11.
- GG. Provide access panels below the Patient Room countertops to serve as inspection ports for the Patient Room bathtubs.

REVISIONS

44	05/28/10	ASI #08
46	05/17/11	CO #201
47	05/20/11	ASI #78
48	10/10/11	CO#263
49	10/28/11	CO#288
50	03/12/12	CO#281
51	04/03/12	CO#329
52	05/24/12	CO#368

OSHPD/FDD-Field Review Tracking

Project:	NO. A 2012-05333
ACO:	1/11/12
Architect:	(X) AC (X) D (X) Refer
Mechanical:	(X) AC (X) D (X) Refer
Structural:	(X) AC (X) D (X) Refer
DSE:	(X) AC (X) D (X) Refer
FLSO:	(X) AC (X) D (X) Refer
Fire Life Safety:	(X) AC (X) D (X) Refer

APPROVAL

Office of Statewide Health Planning & Development (OSHPD) REVIEWED IN ACCORDANCE WITH THE REQUIREMENTS OF 124, CCR (ADDD/FDD)

CHANGE ORDER: 368
INSTRUCTION BULLETIN: DEFERRED APPROVAL (DDENUM)

PROJECT NAME
CHILDREN'S HOSPITAL OF ORANGE COUNTY
455 S. Main St.
Orange, CA 92668-3874

TOWER II

CHOC HOSPITAL

PROJECT NUMBER
12011.00
Increment #7

OSHPD - PROJECT NUMBER
IL 072072-30

ISSUE
OSHPD PERMIT

DATE
01/27/2010

SCALE
1/4" = 1' - 0"

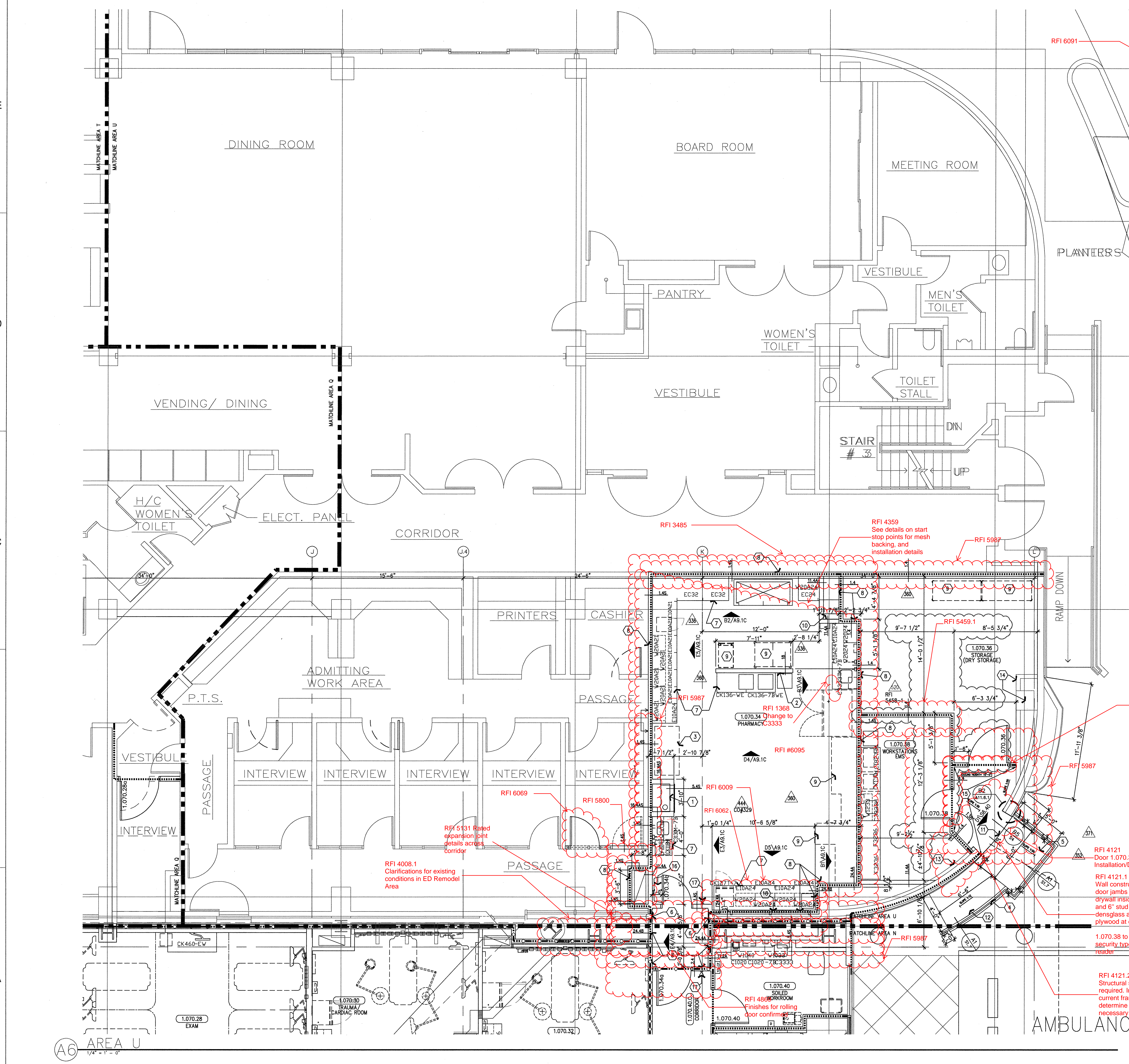
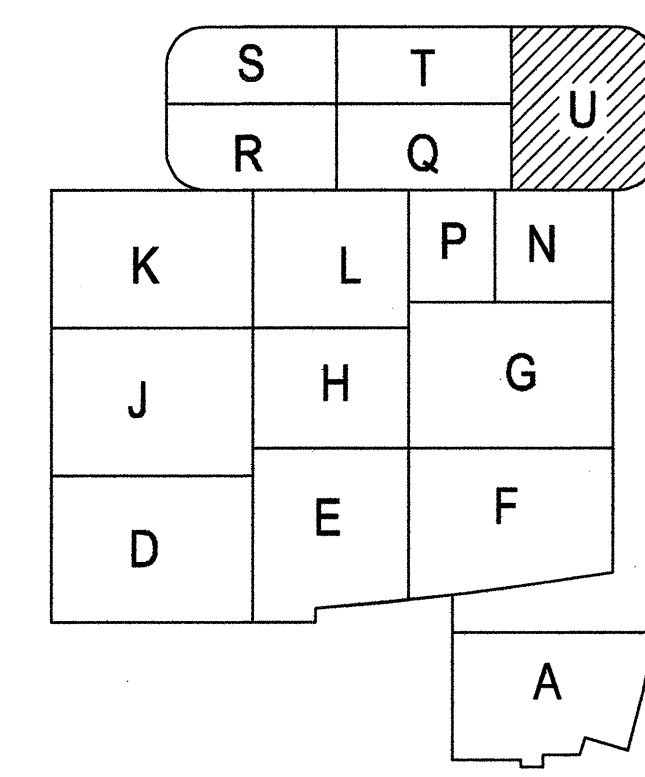
DRAWING TITLE
LEVEL 1 ENLARGED PLAN AREA - U

DRAWING NUMBER
A3.1U

B1 GENERAL NOTES

- RFI 4121 Door 1.070.38 & 1.070.36 Installation/Details
- RFI 4121.1 Wall construction at door jambs will be 5/8" drywall inside rooms and 6" stud + 5/8" demglass and plywood at exterior.
- 1.070.38 to receive security type 3 w/card reader
- RFI 4121.2 Structural support required. Investigate current framing, and determine what is necessary.

A1 KEY PLAN



N:\PROJECTS\CHOC TOWER 2 SHELL BUILDING\CONTRACTED PROJECTS\PROJECT INCREMENTS\NCR_#7_TENANT IMPROVEMENT\OSHPD PERMIT (CONSTRUCTION DOCUMENTS)\00002_COA_A3.1U.DWG 5/25/2012 RONALD