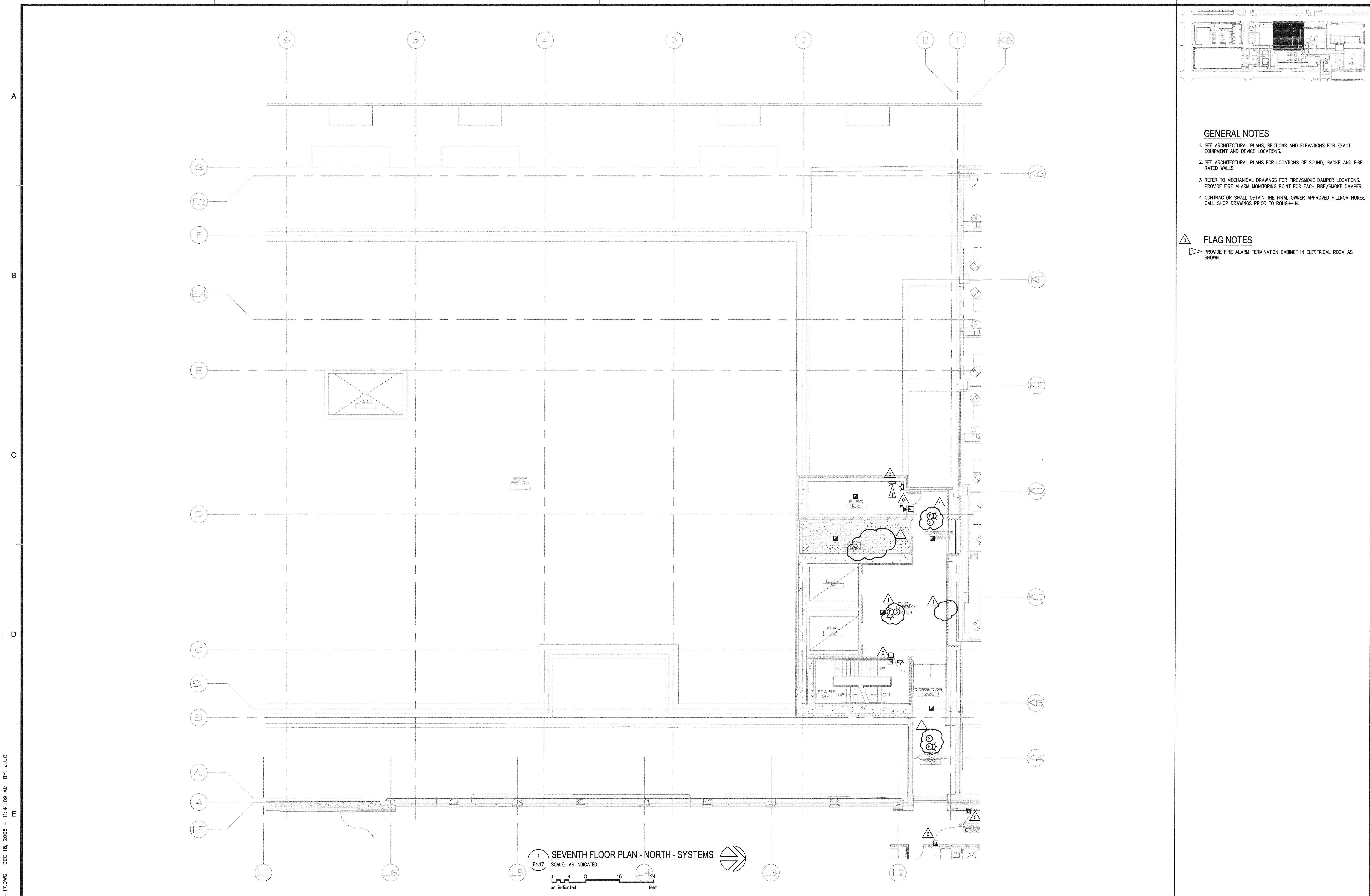
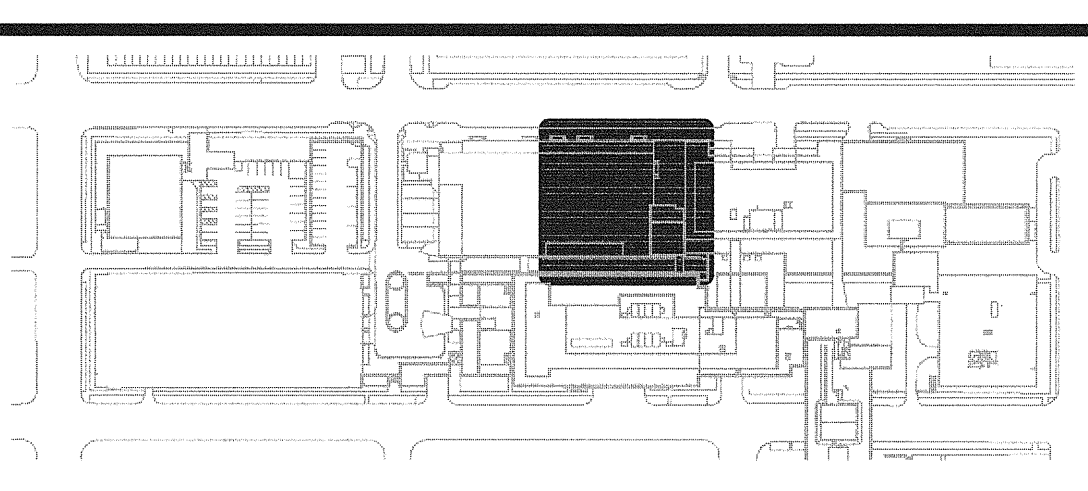


N:\B13608\CADD-05\416\_E4-17.DWG DEC 18, 2008 - 11:41:09 AM BY: JLUO



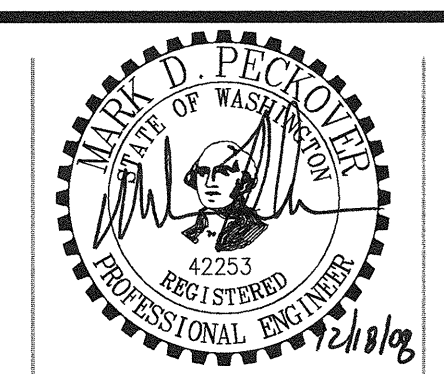
1 SEVENTH FLOOR PLAN - NORTH - SYSTEMS  
E4.17  
SCALE: AS INDICATED  
0 4 8 16 24  
feet  
as indicated



- GENERAL NOTES**
1. SEE ARCHITECTURAL PLANS, SECTIONS AND ELEVATIONS FOR EXACT EQUIPMENT AND DEVICE LOCATIONS.
  2. SEE ARCHITECTURAL PLANS FOR LOCATIONS OF SOUND, SMOKE AND FIRE RATED WALLS.
  3. REFER TO MECHANICAL DRAWINGS FOR FIRE/SMOKE DAMPER LOCATIONS. PROVIDE FIRE ALARM MONITORING POINT FOR EACH FIRE/SMOKE DAMPER.
  4. CONTRACTOR SHALL OBTAIN THE FINAL OWNER APPROVED HILLROM NURSE CALL SHOP DRAWINGS PRIOR TO ROUGH-IN.

- FLAG NOTES**
- △ PROVIDE FIRE ALARM TERMINATION CABINET IN ELECTRICAL ROOM AS SHOWN.

**GIFFIN • BOLTE • JURGENS**  
ARCHITECTS  
815 S.W. SECOND AVENUE • PORTLAND, OREGON 97204  
(803) 223-0992 www.gbjarch.com FAX (803) 294-3961



MultiCare  
**EMERGENCY DEPARTMENT & CANCER CENTER EXPANSION**  
TACOMA, WASHINGTON

100% CD SET 9/26/08  
CCD #4 12/17/08

Date 09-26-2008  
Scale AS INDICATED  
Drawn By JL  
Job No. 4034

**SEVENTH FLOOR  
PLAN - NORTH  
SYSTEMS**

**E4  
17**