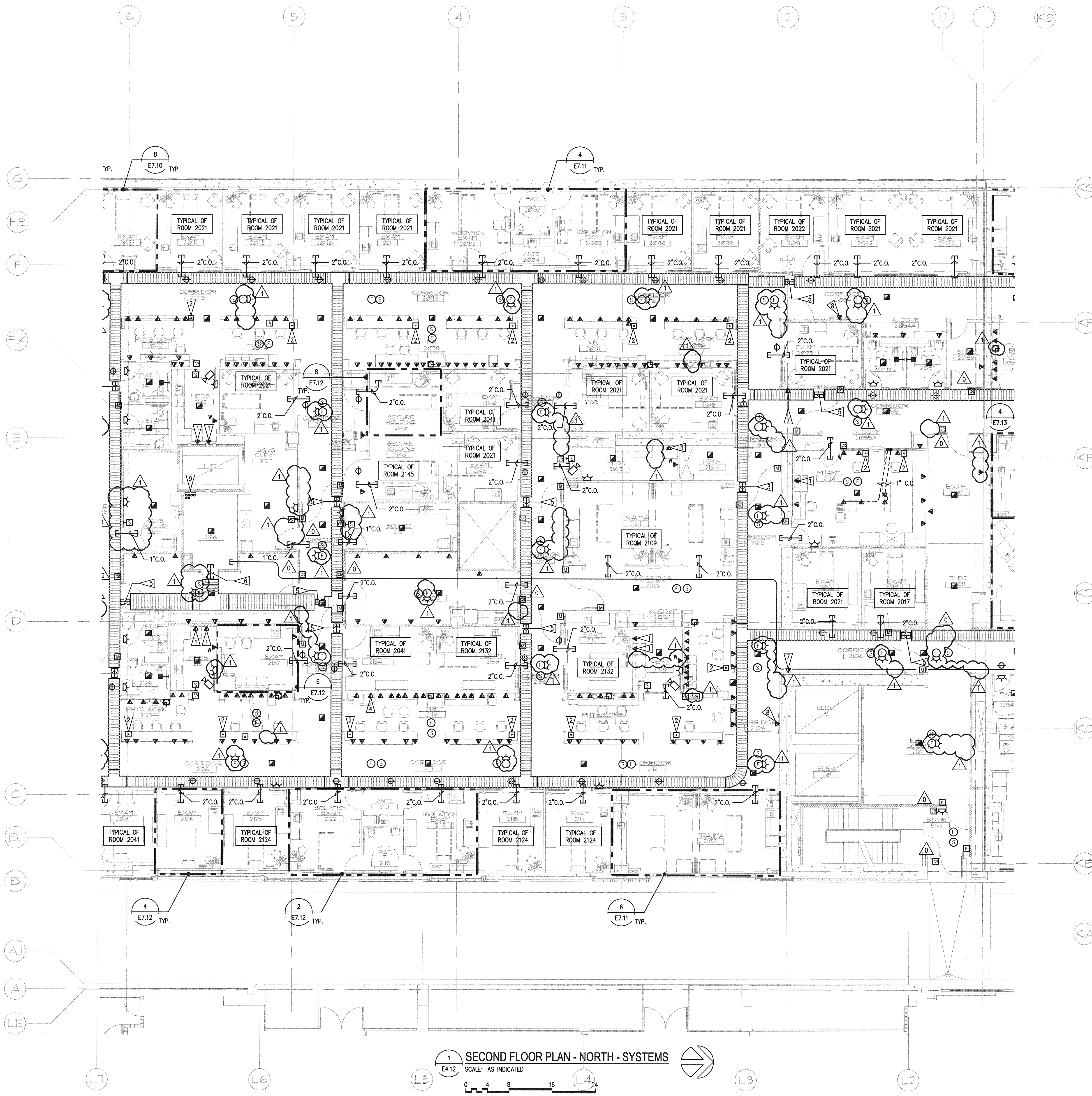


N:\B15608\CADD-05\404_E4-12.DWG DEC 18, 2008 - 11:42:12 AM BY: JLUO

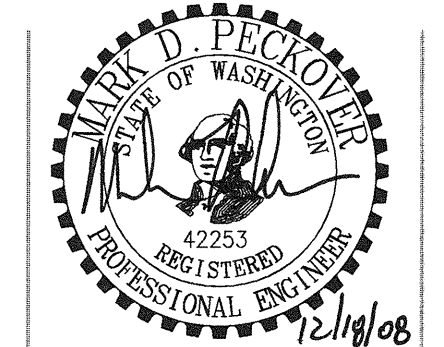


1 SECOND FLOOR PLAN - NORTH - SYSTEMS
 E4.12 SCALE: AS INDICATED
 0 4 8 16 24 feet

- GENERAL NOTES**
- SEE ARCHITECTURAL PLANS, SECTIONS AND ELEVATIONS FOR EXACT EQUIPMENT AND DEVICE LOCATIONS.
 - SEE ARCHITECTURAL PLANS FOR LOCATIONS OF SOUND, SMOKE AND FIRE RATED WALLS.
 - REFER TO MECHANICAL DRAWINGS FOR FIRE/SMOKE DAMPER LOCATIONS. PROVIDE FIRE ALARM MONITORING POINT FOR EACH FIRE/SMOKE DAMPER.
 - CONTRACTOR SHALL OBTAIN THE FINAL OWNER APPROVED HILLROM NURSE CALL SHOP DRAWINGS PRIOR TO ROUGH-IN.

- FLAG NOTES**
- ▽ PYXIS CONNECTION
 - ▽ PANIC BUTTON CONNECTION.
 - ▽ PROVIDE (1) 3.5"X3.5" SQUARE EZ PATH DEVICES OR APPROVED.
 - ▽ COPIER CONNECTION.
 - ▽ PROVIDE (2) 3.5"X3.5" SQUARE EZ PATH DEVICES OR APPROVED.
 - ▽ PROVIDE (4) 3.5"X3.5" SQUARE EZ PATH DEVICES OR APPROVED.
 - ▽ TIME CARD CONNECTION VERIFY LOCATION WITH ARCHITECT PRIOR TO ROUGH-IN.
 - ▽ CENSUS BOARD CONNECTION. VERIFY EXACT LOCATION WITH ARCHITECT PRIOR TO ROUGH-IN.
 - ▽ PROVIDE (6) 3.5" X 3.5" SQUARE D EX PATH DEVICES THROUGH SECOND FLOOR TO THIRD FLOOR IS ROOM. PROVIDE ALL FLOOR MOUNTING ACCESSORIES TO PROVIDE A COMPLETE SYSTEM.

Giffin • Bolte • Jurgens, p.c.
 ARCHITECTS
 815 S.W. SECOND AVENUE PORTLAND, OREGON 97204
 (503) 223-8992 www.gbjarch.com FAX (503) 294-3961



MultiCare
EMERGENCY DEPARTMENT & CANCER CENTER EXPANSION
 TACOMA, WASHINGTON

100% CD SET 9/26/08
 CCD #4 12/17/08

Date 09-26-2008
 Scale AS INDICATED
 Drawn By JL
 Job No. 4034

**SECOND FLOOR
 PLAN - NORTH
 SYSTEMS**

**E4
 12**