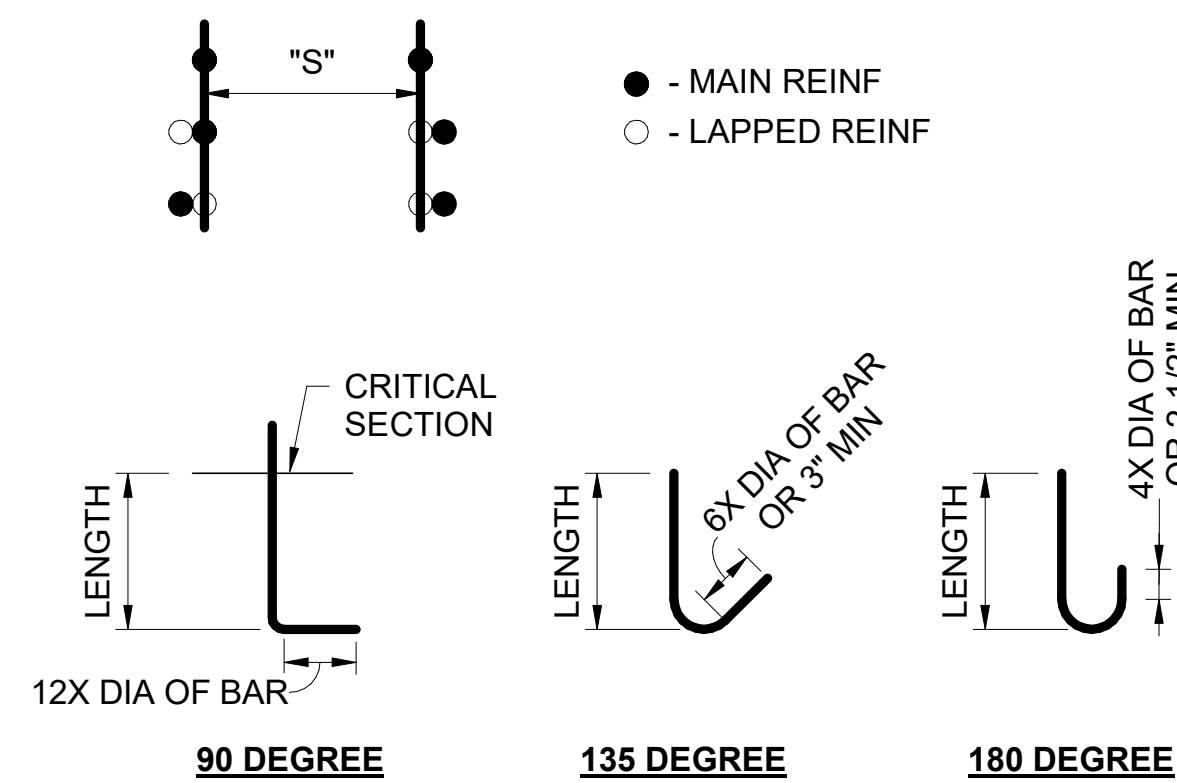


REINFORCING DEVELOPMENT LENGTHS TYPE A (NORMAL WEIGHT) = 4500psi

BAR SIZE	DEVELOPMENT LENGTH		SPLICE LENGTH		HOOK LENGTH
	OTHER	TOP	OTHER	TOP	
#3	1' - 1"	1' - 5"	1' - 5"	1' - 11"	7"
#4	1' - 6"	1' - 11"	1' - 11"	2' - 6"	9"
#5	1' - 10"	2' - 5"	2' - 5"	3' - 2"	11"
#6	2' - 3"	2' - 11"	2' - 11"	3' - 9"	1' - 1"
#7	3' - 3"	4' - 3"	4' - 3"	5' - 6"	1' - 4"
#8	3' - 9"	4' - 10"	4' - 10"	6' - 4"	1' - 6"
#9	4' - 2"	5' - 6"	5' - 6"	7' - 1"	1' - 8"
#10	4' - 9"	6' - 2"	6' - 2"	8' - 0"	1' - 11"
#11	5' - 3"	6' - 10"	6' - 10"	8' - 11"	2' - 1"
#14	6' - 4"	8' - 2"	8' - 2"	10' - 8"	2' - 6"
#18	8' - 5"	10' - 11"	10' - 11"	14' - 3"	3' - 4"

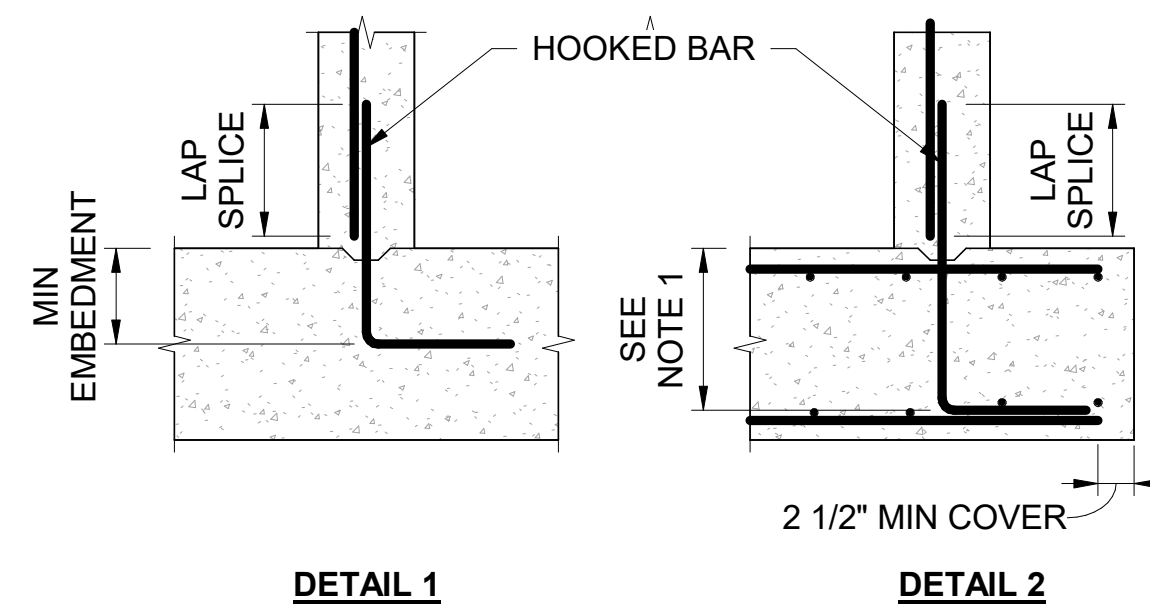
TYPICAL REINFORCING NOTES:

- REINFORCING BAR DEVELOPMENT AND LAP SPLICE LENGTHS SHALL BE AS SHOWN IN THESE TABLES UNLESS NOTED OTHERWISE ON THE DRAWINGS.
- THE LENGTHS SHOWN IN THE TABLES ARE BASED ON THE FOLLOWING CONCRETE COVERAGE AND REINFORCING C TO C SPACING:
 BEAMS OR COLUMNS: COVER $\geq 1.0bd$ (BAR DIAMETER)
 C TO C SPACING $\geq 2.0bd$
 ALL OTHERS: COVER $\geq 1.0bd$
 C TO C SPACING $\geq 3.0bd$
- TOP BARS ARE DEFINED AS HORIZONTAL REINFORCEMENT PLACED SUCH THAT MORE THAN 12" OF FRESH CONCRETE IS CAST IN THE MEMBER BELOW THE DEVELOPMENT LENGTH OR SPLICE. VERTICAL BARS MAY BE CLASSIFIED AS OTHER.
- THE DEVELOPMENT AND SPLICE LENGTHS SHOWN SHALL NOT APPLY IF ANY OF THE FOLLOWING CONDITIONS OCCUR:
 A. $f_c < 4000$ psi
 B. $f_y > 60,000$ psi
 C. THE COVER OR C TO C BAR SPACING IS NOT AS LISTED ABOVE.
 D. THE REINFORCING STEEL IS EPOXY COATED.
- WHERE BAR SPLICES ARE STAGGERED SUCH THAT ONE-HALF OR LESS OF TOTAL REINFORCEMENT IS SPLICED WITHIN REQD LAP LENGTH. SPLICE LENGTH MAY EQUAL DEVELOPMENT LENGTH.
- C TO C SPACING(S) IS DEFINED AS BELOW:



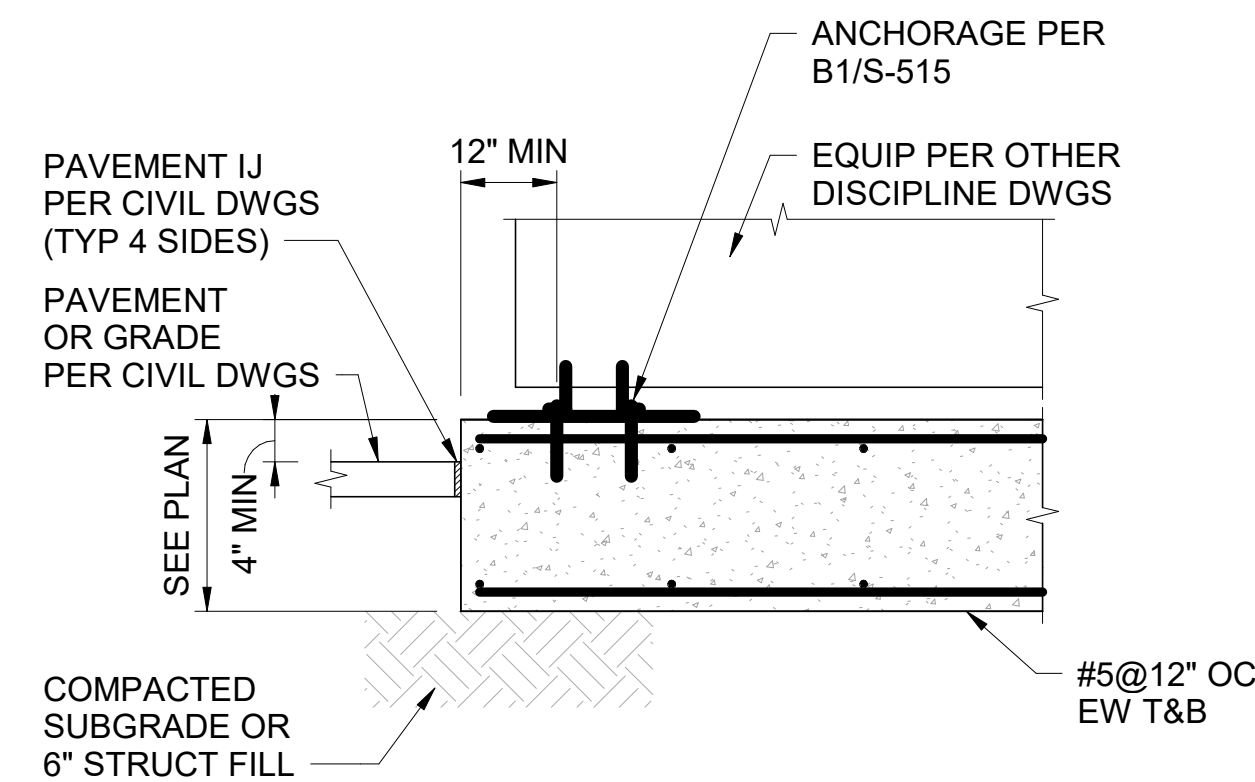
INSIDE BEND DIAMETER (DEVELOPMENT, UNO):
 6X DIA OF BAR - #3 TO #8 BARS
 8X DIA OF BAR - #9 TO #11 BARS
 10X DIA OF BAR - #14 & #18 BARS

INSIDE BEND DIAMETER (STIRRUPS/TIES/HOOPS):
 4X DIA OF BAR - #3 TO #5 BARS
 6X DIA OF BAR - #6 TO #8 BARS

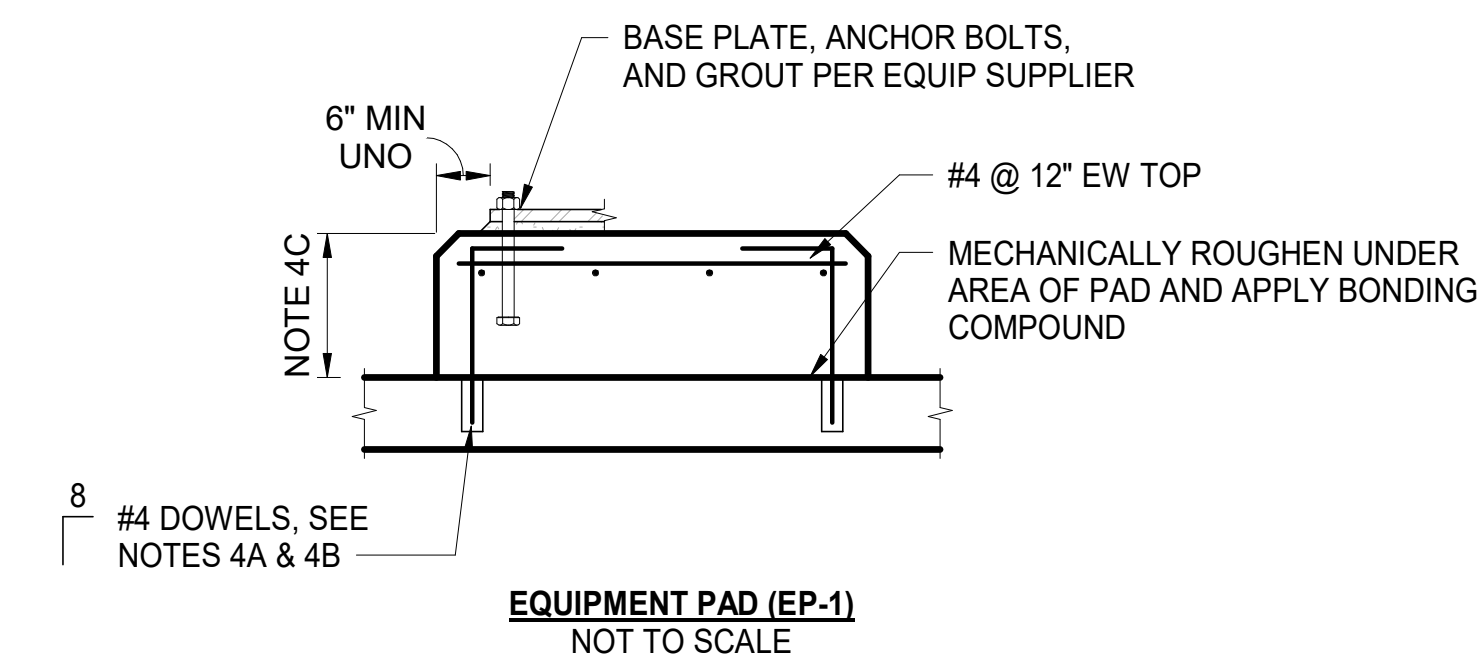


DEVELOPMENT LENGTH NOTES:

- WHERE DRAWINGS ARE DETAILED SIMILAR TO DETAIL 2, EXTEND THE EMBEDMENT LENGTH SUCH THAT THE HOOKED BAR CONTACTS THE LAYER OF MAIN REINFORCING SHOWN.
- EMBEDMENT LENGTHS IN CHART ARE TYPICAL EXCEPT AS NOTED IN DETAIL 2, OR AS INDICATED ON DRAWINGS.



D5 EQUIPMENT FOUNDATION (EF-1)
 S-501 SCALE: 1" = 1'-0"



NOTES:

- PROVIDE EP-1 FOR ALL INT EQUIP. SEE OTHER DISCIPLINE DRAWINGS FOR EQUIP LOCATIONS.
- EQUIP ANCHOR BOLTS SHALL BE STANDARD TYPE VII BOLTS, UNLESS OTHERWISE RECOMMENDED BY EQUIP MFR.
- EQUIP SHALL BE GROUTED IN PLACE W/ NON-SHRINK GROUT UNLESS OTHERWISE RECOMMENDED BY EQUIP MFR.
- FOR EP-1 ONLY:
 A. PROVIDE NUMBER OF DOWELS TO MATCH TOTAL CROSS-SECTIONAL AREA OF ANCHOR BOLTS, EQUALLY SPACED AROUND PAD, EXCEPT THAT SPACING OF DOWELS SHALL NOT EXCEED 12".
 B. IF FLOOR SLAB OR PAVEMENT IS EXISTING OR CONSTRUCTED BEFORE DOWELS ARE PLACED, DOWELS SHALL BE EPOXY GROUTED INTO FLOOR SLAB OR PAVEMENT W/ 4 1/2" EMBED.
 C. HEIGHT OF PAD ABOVE SURROUNDING FLOOR SLAB OR PAVEMENT PER PLAN.

F5 EQUIPMENT PAD
 S-501 SCALE: 3/4" = 1'-0"

F3 TYPICAL REINFORCING DEVELOPMENT AND SPLICES
 S-501 SCALE: 1" = 1'-0"

Sheet Title
STANDARD CONCRETE DETAILS

Dwg. No.
 PLS2021-0432-0010D

Sht. No.
 S-501