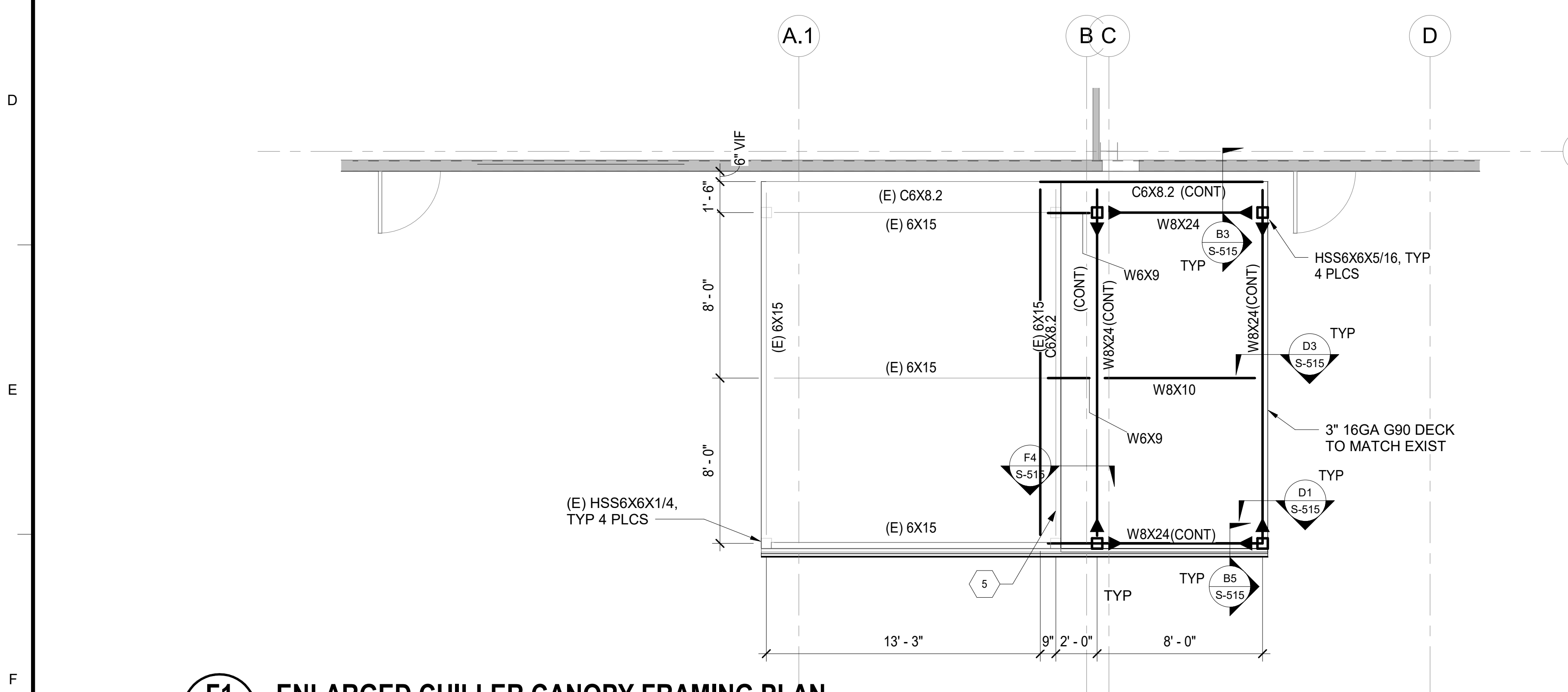
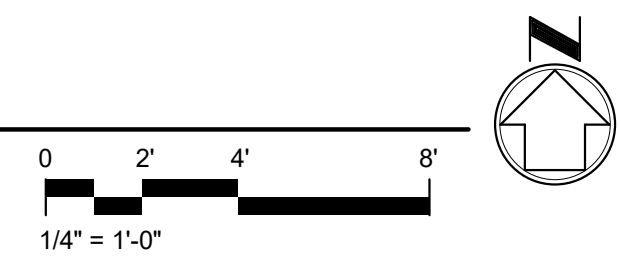
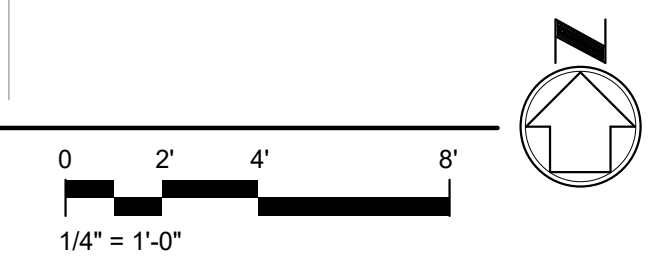


C1 ENLARGED CHILLER CANOPY FOUNDATION PLAN
S-401 SCALE: 1/4" = 1'-0"



F1 ENLARGED CHILLER CANOPY FRAMING PLAN
S-401 SCALE: 1/4" = 1'-0"



GENERAL NOTES

1. FOR STRUCTURAL GENERAL NOTES, SEE S-001.
2. FOR STRUCTURAL LEGNEDS AND ABBREVIATIONS, SEE S-002.
3. FOR STRUCTURAL SPECIAL INSPECTIONS, SEE S-003 AND S-004.

KEYED NOTES

1. EXISTING COMPRESSED AIR TANK TO REMAIN.
2. EXISTING AIR COMPRESSOR TO REMAIN.
3. EXISTING CONCRETE MAT SLAB FOUNDATION TO REMAIN.
4. EXIST TS6X6X1/4 STEEL CANOPY COLUMN TO REMAIN.
5. EDGE OF EXIST CANOPY ROOF DECK TO REMAIN.
6. EXIST GROUNDING ROD TEST WELL TO BE EXTENDED. REFER TO ELEC FOR ADDITIONAL INFORMATION
7. EF-1 CONCRETE FOUNDATION PER D5/S-501

LEGEND

- PCHW01-1
425# PCHW01-1: EQUIPMENT TAG PER MECH DWGS. REFER TO S-514 FOR EQUIPMENT ANCHORAGE.
425# : MAX OPERATING WEIGHT OF EQUIPMENT
- ELBOW STANCHION PIPE SUPPORT PER F1/S-513. COORDINATE LOCATIONS WITH MECH DRAWINGS
- MOMENT CONNECTION
- INDICATES THE FOOTPRINT OF EQUIPMENT. REFER TO MECH FOR ADDITIONAL INFORMATION

Sheet Title
ENLARGED CHILLER PLANT FOUNDATION & CANOPY FRAMING PLAN

Dwg. No.
PLS2021-0432-0007D

Sht. No.
S-401