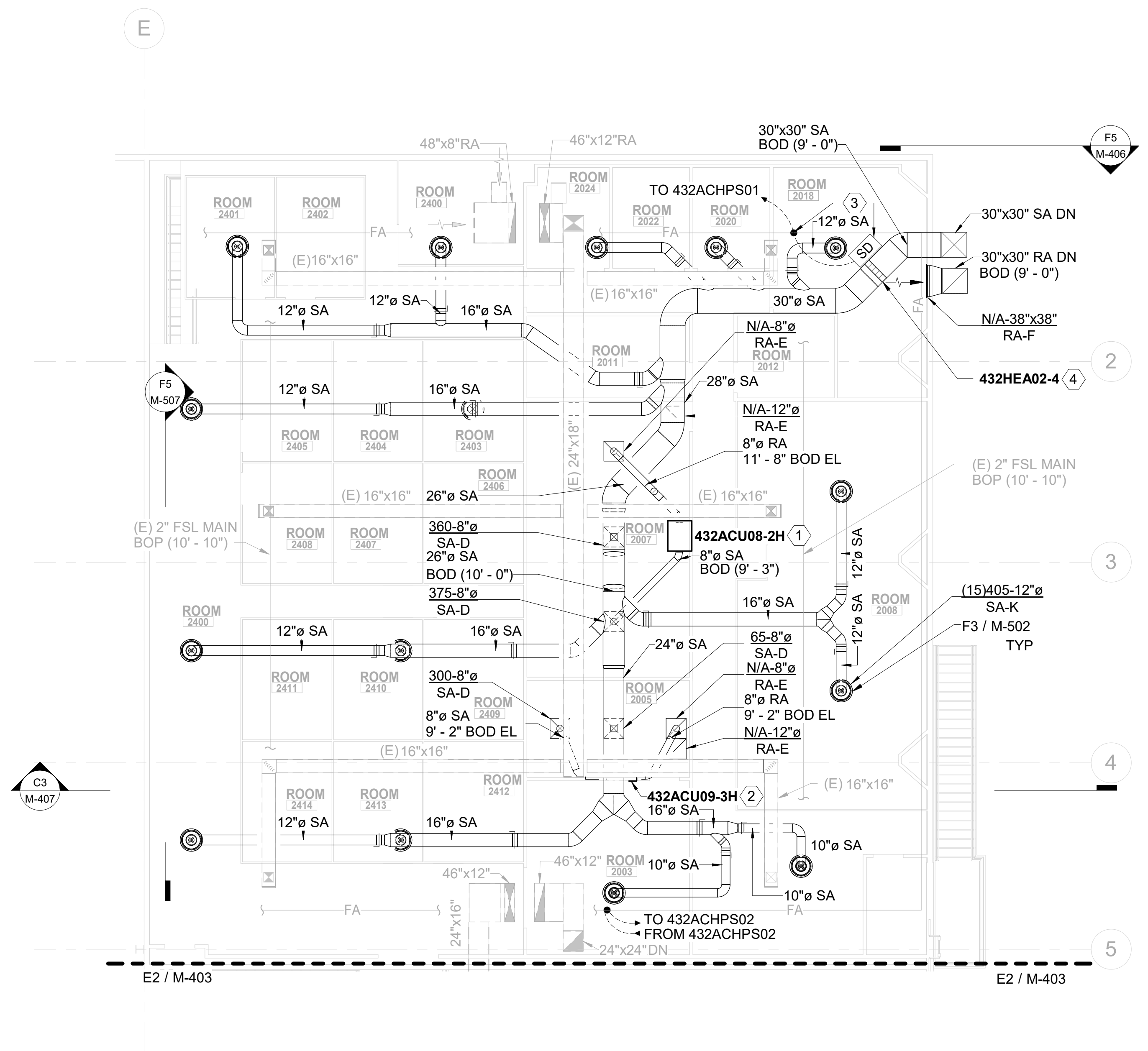


A
B
C
D
E
F



F2
M-405

MECHANICAL ENLARGED 2ND FLOOR OPEN OFFICE NEW CONSTRUCTION PLAN - DUCTWORK

SCALE: 1/8" = 1'-0"

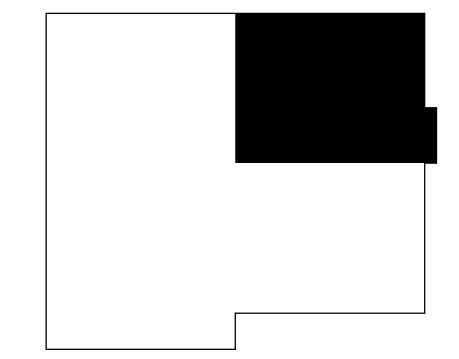
0 4' 8' 16'
1/8" = 1'-0"

GENERAL NOTES

1. REFER TO M-001 FOR MECHANICAL ABBREVIATIONS, LEGEND, SYMBOLS, AND GENERAL NOTES.
2. COMPONENTS SHOWN HALF-TONE ON THIS DRAWING ARE ITEMS TO REMAIN; BOLD COMPONENTS ARE NEW. REFER TO MD404 FOR DEMOLITION OF EXISTING DUCTWORK AFTER NEW DUCTWORK IS INSTALLED.
3. DASHED REGIONS AROUND EQUIPMENT INDICATE CLEARANCE REQUIRED FOR EQUIPMENT ACCESS AND MAINTENANCE.
4. NEW DUCTWORK MUST BE INSTALLED PRIOR TO DEMOLITION OF EXISTING DUCTWORK TO LIMIT DURATION OF SYSTEM OUTAGE.
5. INSTALL MANUAL VOLUME DAMPER AT EACH SUPPLY AIR DIFFUSER, IN BRANCH DUCTWORK IMMEDIATELY UPSTREAM OF DIFFUSER CONNECTION, AND ELSEWHERE AS INDICATED.
6. REFER TO M-414 FOR SYSTEM THERMOSTATS.
7. EXISTING FIRE SPRINKLER PIPING TO REMAIN AS IS. NEW DUCTWORK MUST BE ROUTED TO AVOID CONFLICTS WITH EXISTING FIRE SPRINKLER PIPING.

KEYED NOTES

- ① FURNISH AND INSTALL NEW SPLIT SYSTEM DX FAN COIL UNIT. INTERLOCK WITH 432RCUA02-2H. INSTALL UNIT ABOVE EXISTING TO REMAIN CEILING, SUSPENDED FROM ROOF STRUCTURE. POSITION UNIT TO BE ACCESSIBLE FOR MAINTENANCE FROM CORRIDOR. REFER TO S-514.
- ② FURNISH AND INSTALL NEW SPLIT SYSTEM DX FAN COIL UNIT. INTERLOCK WITH 432RCUA03-3H. INSTALL UNIT ABOVE EXISTING TO REMAIN CEILING, SUSPENDED FROM ROOF STRUCTURE. POSITION UNIT TO BE ACCESSIBLE FOR MAINTENANCE FROM CORRIDOR. REFER TO S-514.
- ③ EXISTING, RE-USED, SD FURNISHED INSTALLED AND WIRED BY CONTROLS SUBCONTRACTOR. REFER TO MD404. WIRE DEVICE TO EXISTING ADDRESSABLE FIRE ALARM CONTROL LOOP AND WIRE FIRE ALARM CONTROL LOOP TO 432ACHPS01 SUPPLY FAN MOTORS.
- ④ FURNISH AND INSTALL NEW DUCT-MOUNTED ELECTRIC RESISTANCE HEATING COIL.



KEY PLAN

| | |
|-------------|--|
| Sheet Title | MECHANICAL ENLARGED 2ND FLOOR OPEN OFFICE NEW CONSTRUCTION PLAN - DUCTWORK |
| Dwg. No. | PLM2021-0432-0016D |
| Sht. No. | M-405 |