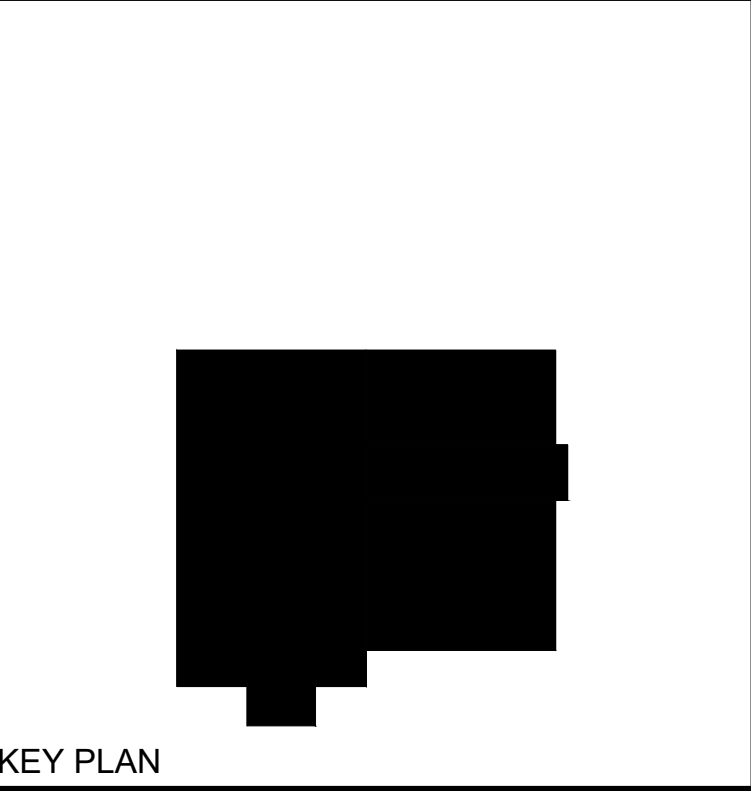


A
B
C
D
E
F



GENERAL NOTES

1. GPR SCAN TO BE PERFORMED PRIOR TO SITE WORK WHERE EXISTING ASPHALT IS TO BE DISTURBED FOR NEW WORK.
2. HAND EXCAVATE WHERE DIGGING WITHIN 5' OF EXISTING UTILITY IDENTIFIED USING GPR SCAN.
3. FOR UTILITIES NOT SPECIFICALLY REFERENCED IN KEYED NOTES, DO NOT DIG WITHIN 30" HORIZONTALLY OF EXISTING UTILITY.
4. DASHED REGIONS AROUND EQUIPMENT INDICATE CLEARANCE REQUIRED FOR EQUIPMENT ACCESS AND MAINTENANCE.

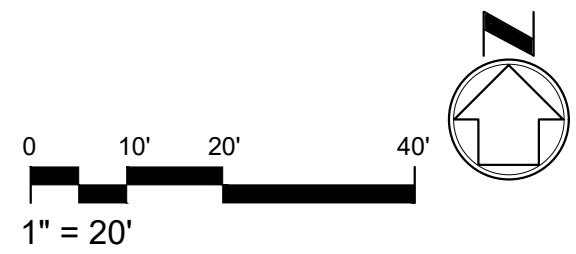


KEY PLAN

KEYED NOTES

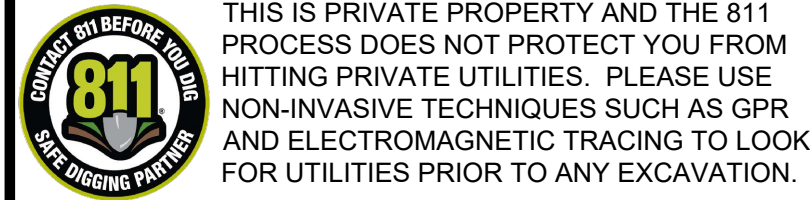
- ① REMOVE EXISTING FENCE, FENCE POST AND FOUNDATION. SAWCUT PAVEMENT AND REMOVE 6" FROM EXISTING EDGE OF PAVEMENT
- ② TRENCH AND REMOVE EXISTING SANITARY SEWER
- ③ REMOVE EXISTING BOLLARD. SAWCUT AND GRIND FLUSH TO GRADE
- ④ TRENCH AND REMOVE EXISTING STORM SEWER
- ⑤ CONCRETE BARRIERS IN WORK ZONE TO BE RELOCATED
- 99 PROTECT IN PLACE

F2 DEMOLITION PLAN
C-100 SCALE: 1" = 20'



LEGEND

- CLEAR AND GRUB, REMOVE EX GRAVEL TO CONSTRUCT PAVEMENT SECTION
- REMOVE EXISTING ASPHALT TO DEPTH NEEDED TO CONSTRUCT EQUIPMENT PAD. SEE STRUCTURAL PLANS FOR PAD THICKNESS
- REMOVE EXISTING CONCRETE
- REMOVE EXISTING FENCE
- REMOVE EXISTING UTILITY



Sheet Title	DEMOLITION PLAN
Dwg. No.	PLC2021-0432-0002D
Sht. No.	CD-101